

SITE DRAINAGE PLAN
of
RIO VISTA ESTATES 4TH ADDITION
To Wichita, Sedgwick County, Kansas

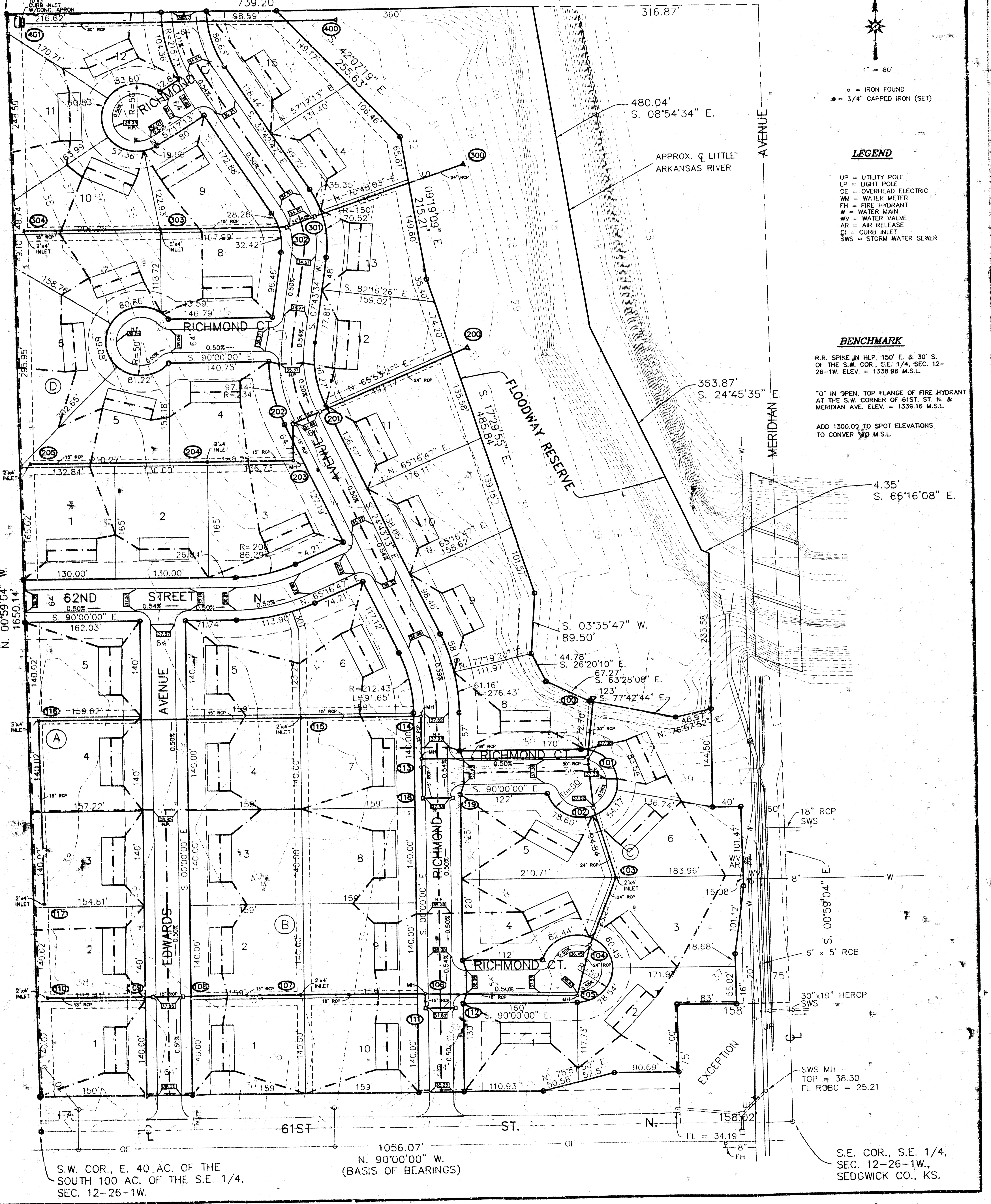
LEGAL DESCRIPTION

THE EAST 40.0 ACRES OF THE SOUTH 100 ACRES OF THE S.E. 1/4, OF SECTION 12, TOWNSHIP 26 SOUTH, RANGE 1 WEST OF THE 6TH P.M., SEDGWICK COUNTY, KANSAS, LYING WEST OF THE CENTERLINE OF THE LITTLE ARKANSAS RIVER, EXCEPT THE SOUTH 175.0 FEET OF THE EAST 158.0 FEET THEREOF.

N.E. COR., E. 40 AC. OF THE SOUTH 100 AC. OF THE S.E. 1/4, SEC. 12-26-1W.

N.W. COR., E. 40 AC. OF THE SOUTH 100 AC. OF THE S.E. 1/4, SEC. 12-26-1W.

S. 90°00'00" E.
739.20'



1" = 60'

- = IRON FOUND
- = 3/4" CAPPED IRON (SET)

LEGEND

- UP = UTILITY POLE
- LP = LIGHT POLE
- OE = OVERHEAD ELECTRIC
- WM = WATER METER
- FH = FIRE HYDRANT
- W = WATER MAIN
- WV = WATER VALVE
- AR = AIR RELEASE
- CI = CURB INLET
- SWS = STORM WATER SEWER

BENCHMARK

R.R. SPIKE IN H.P. 150' E. & 30' S. OF THE S.W. COR., S.E. 1/4, SEC. 12-26-1W. ELEV. = 1338.96 M.S.L.

"0" IN OPEN, TOP FLANGE OF FIRE HYDRANT AT THE S.W. CORNER OF 61ST. ST. N. & MERIDIAN AVE. ELEV. = 1339.16 M.S.L.

ADD 1300.02 TO SPOT ELEVATIONS TO CONVERT TO M.S.L.

S.E. COR., S.E. 1/4, SEC. 12-26-1W., SEDGWICK CO., KS.

C:\S22000\WORK\CATRONS\EDRAINAGE.DWG