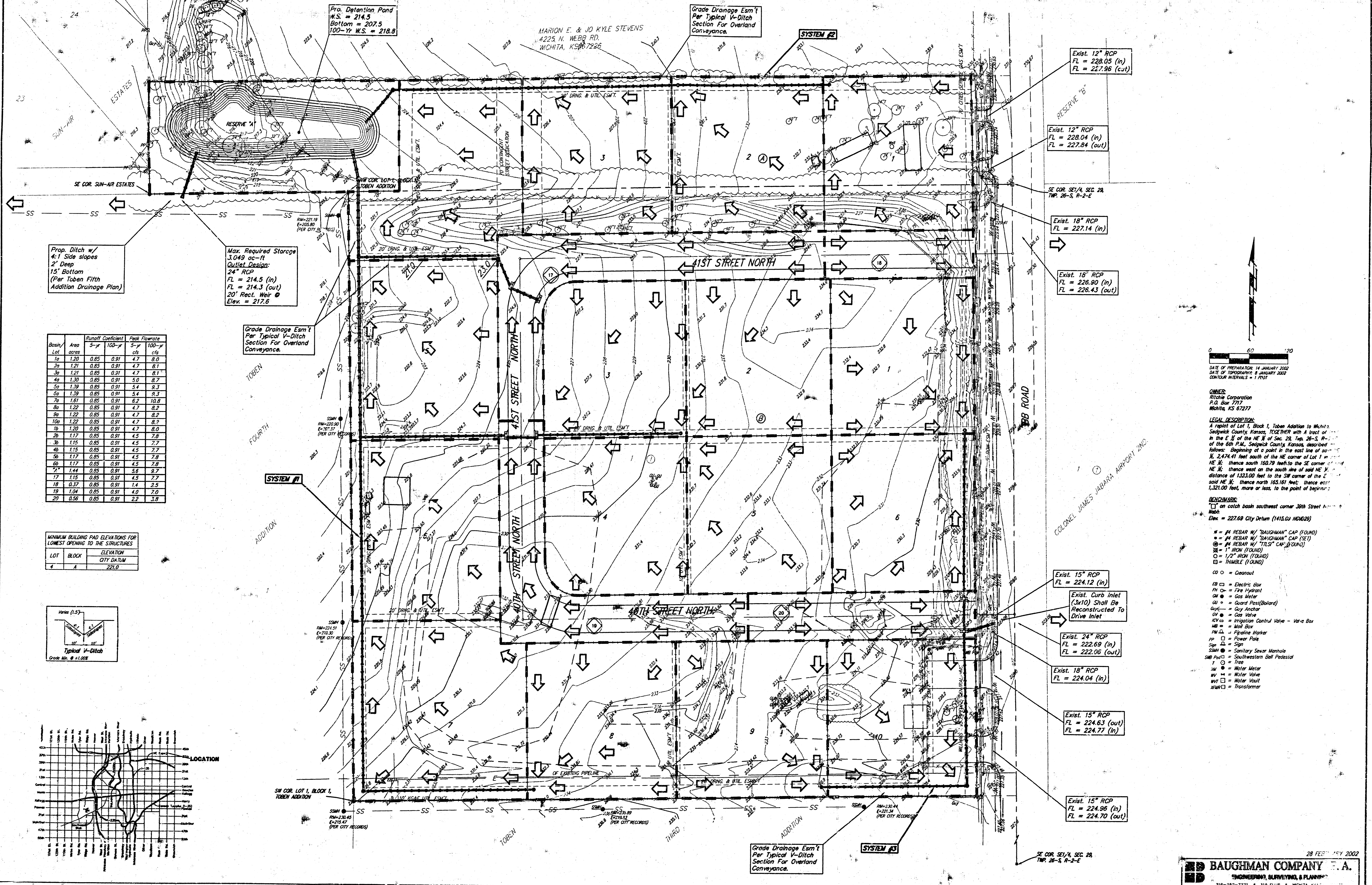


DRAINAGE PLAN RITCHIE INDUSTRIAL PARK WICHITA, SEDGWICK COUNTY, KANSAS



Pro. Detention Pond
W.S. = 214.9
Bottom = 207.5
100-YR. W.S. = 218.9

Grade Drainage Esm't
Per Typical V-Ditch
Section For Overland
Conveyance.

MARION E. & JO KYLE STEVENS
4225 N. WEBB RD.
WICHITA, KS 67226

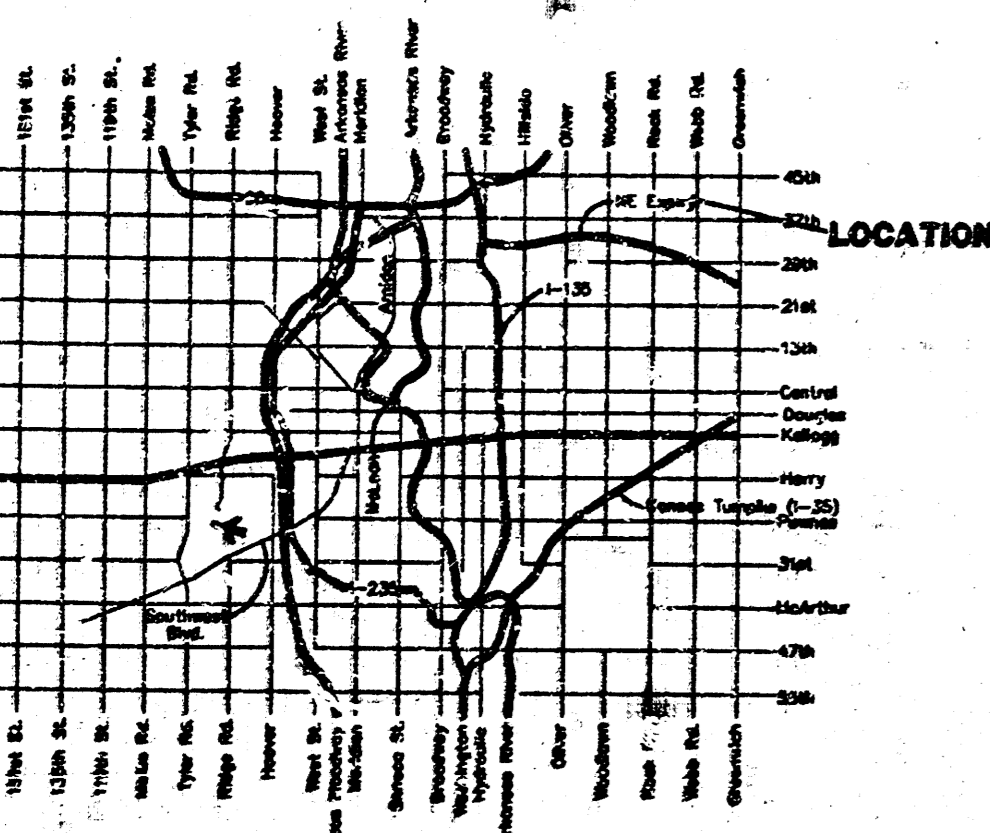
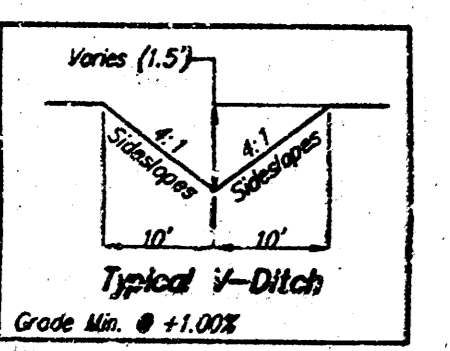
Prop. Ditch w/
4:1 Side slopes
2' Deep
15' Bottom
(Per Toben Fifth
Addition Drainage Plan)

Max. Required Storage
3,049 cu-ft
Outlet Design:
24" RCP
FL = 214.5 (in)
FL = 214.3 (out)
20' Rect. Weir @
Elev. = 217.6

Grade Drainage Esm't
Per Typical V-Ditch
Section For Overland
Conveyance.

Basin/ Lot	Area acres	Runoff Coefficient		Peak Flowrate	
		5-yr	100-yr	5-yr	100-yr
1a	1.20	0.85	0.91	4.7	8.0
2a	1.21	0.85	0.91	4.7	8.1
3a	1.21	0.85	0.91	4.7	8.1
4a	1.30	0.85	0.91	5.0	8.7
5a	1.39	0.85	0.91	5.4	9.3
6a	1.39	0.85	0.91	5.4	9.3
7a	1.61	0.85	0.91	6.2	10.8
8a	1.22	0.85	0.91	4.7	8.2
9a	1.22	0.85	0.91	4.7	8.2
10a	1.22	0.85	0.91	4.7	8.2
1b	1.20	0.85	0.91	4.7	8.0
2b	1.17	0.85	0.91	4.5	7.8
3b	1.15	0.85	0.91	4.5	7.7
4b	1.15	0.85	0.91	4.5	7.7
5b	1.17	0.85	0.91	4.5	7.8
6b	1.17	0.85	0.91	4.5	7.8
7b	1.44	0.85	0.91	5.6	9.7
7c	1.15	0.85	0.91	4.5	7.7
18	0.37	0.85	0.91	1.4	2.5
19	1.04	0.85	0.91	4.0	7.0
20	0.56	0.85	0.91	2.2	3.9

LOT	BLOCK	ELEVATION	
		ADJACENT	CITY DATUM
4	A	221.0	221.0



0 60 120

DATE OF PREPARATION: 14 JANUARY 2002
DATE OF TOPOGRAPHY: 8 JANUARY 2002
CONTOUR INTERVALS: 1 FOOT

OWNER:
Ritchie Corporation
P.O. Box 7717
Wichita, KS 67277

LEGAL DESCRIPTION:
A report of Lot 1, Block 1, Toben Addition to Wichita, Sedgewick County, Kansas, TOGETHER with a tract of land in the E 1/2 of the NE 1/4 of Sec. 28, Twp. 26-S, R-2-E of the 6th P.M., Sedgewick County, Kansas, described as follows: Beginning at a point in the east line of said NE 1/4, 2,474.41 feet south of the NE corner of Lot 1 in said NE 1/4; thence south 150.79 feet to the SE corner of said NE 1/4; thence west on the south line of said NE 1/4 a distance of 1323.00 feet to the SW corner of the E 1/2 of said NE 1/4; thence north 165.161 feet; thence east 1,321.00 feet, more or less, to the point of beginning.

BENCHMARK:
[] on catch basin southwest corner 38th Street North
Elev. = 227.69 City Datum (1415.61 MNG20)

Legend:
 * = #4 REBAR W/ "BAUGHMAN" CAP (FOUND)
 @ = #4 REBAR W/ "BAUGHMAN" CAP (SET)
 ⊙ = #4 REBAR W/ "TILST" CAP (FOUND)
 ⊖ = 1" IRON (FOUND)
 ○ = 1/2" IRON (FOUND)
 □ = TRIMBLE (FOUND)
 CO = Cleanout
 EB □ = Electric Box
 FH □ = Fire Hydrant
 GM = Gas Meter
 GU = Guard Post (Ballard)
 GUY = Guy Anchor
 GV = Gas Valve
 ICV = Irrigation Control Valve - Valve Box
 MB = Mail Box
 PM □ = Pipeline Marker
 PP □ = Power Pole
 SPP = Sign
 SSM = Sanitary Sewer Manhole
 SSB Ped = Southwestern Bell Pedestal
 T = Tree
 W = Water Meter
 WV = Water Valve
 WVT = Water Vault
 WT = Transformer