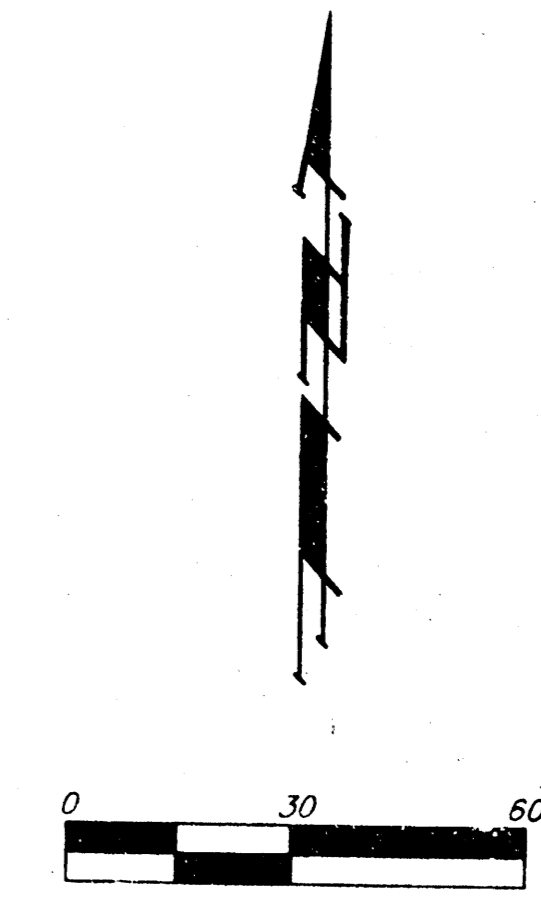
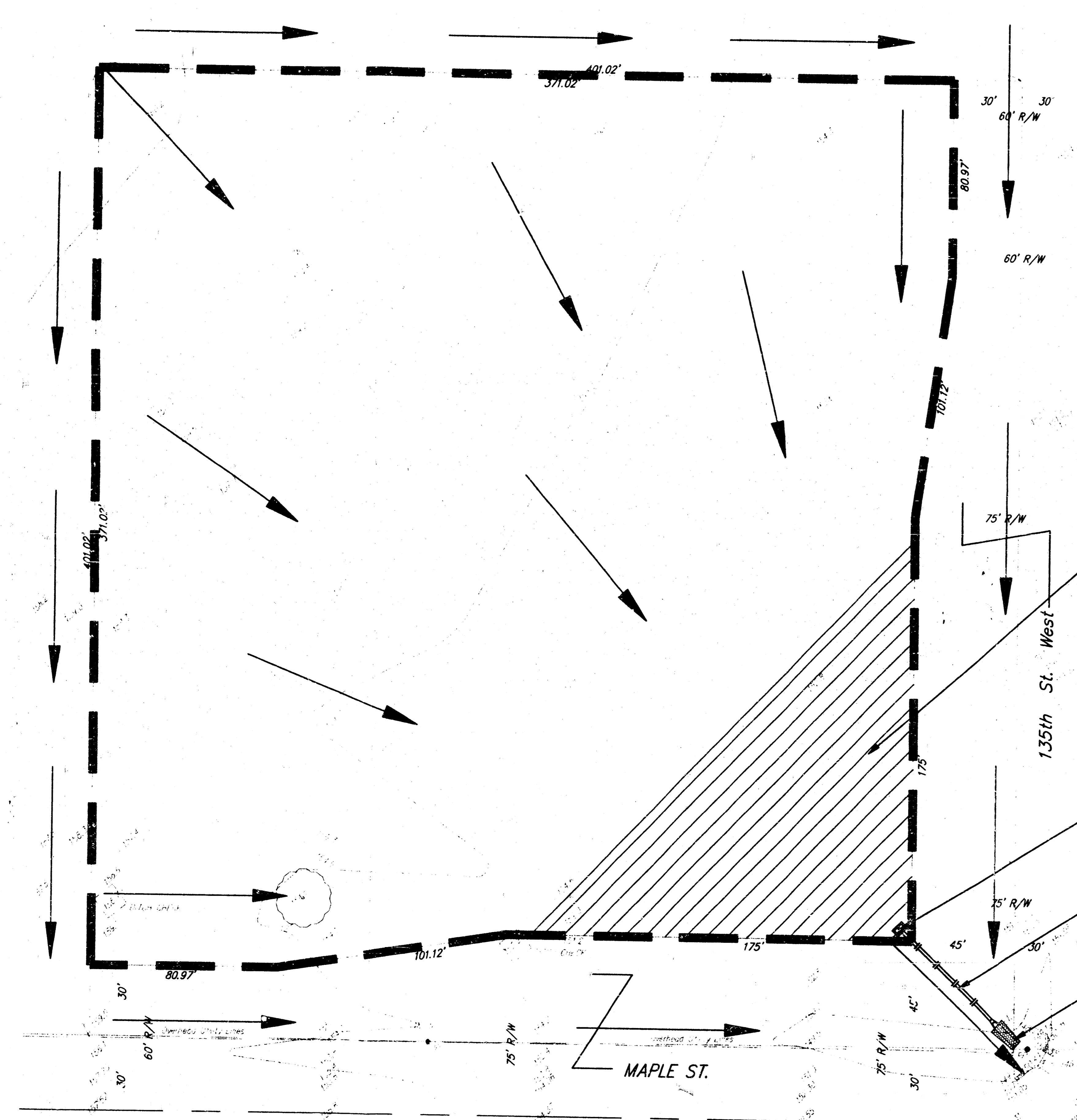


DRAINAGE PLAN

RIVERSIDE CLINIC ADDITION

WICHITA, SEDGWICK COUNTY, KANSAS



LEGEND
 ● = Power Pole
 ● = #4 Rebar w/ Baughman Cap (set)

LEGAL
 The east 431.02 feet of the south 431.02 feet of the SE 1/4 of Sec. 23, Twp. 27-S, R-2-E of the 6th P.M., Sedgwick County, Kansas, Except the east 30 feet and the south 30 feet thereof.

BENCHMARK
 City of Wichita Bench Mark. NE Corner intersection on headwall. 34' SW to iron in Section Corner.
 Elev = 150.20

PARKING LOT DETENTION
 STORAGE CAPACITY 0.2 ACRE-FT

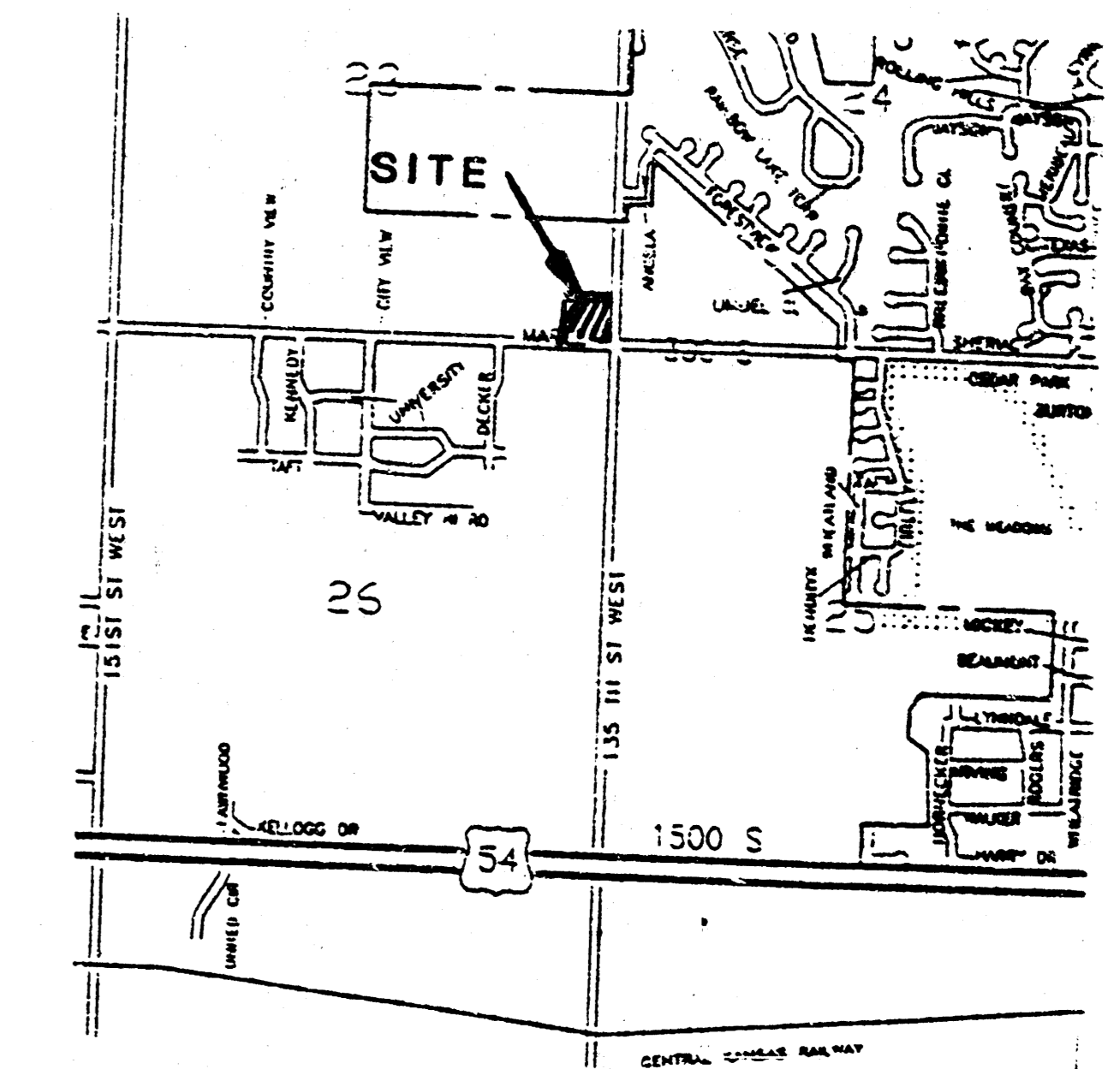
2' X 4' DROP INLET

18" RCP @ 0.60%

LIGHT STONE RIP-RAP

SITE DATA

PREDEVELOPED	POST-DEVELOPED
D.A. = 3 ACRES	D.A. = 3 ACRES
"C" = 0.40	"C" = 0.87
Q ₅ = 5.5 CFS	Q ₅ = 11.9 CFS
Q ₁₀₀ = 8.8 CFS	Q ₁₀₀ = 19.2 CFS

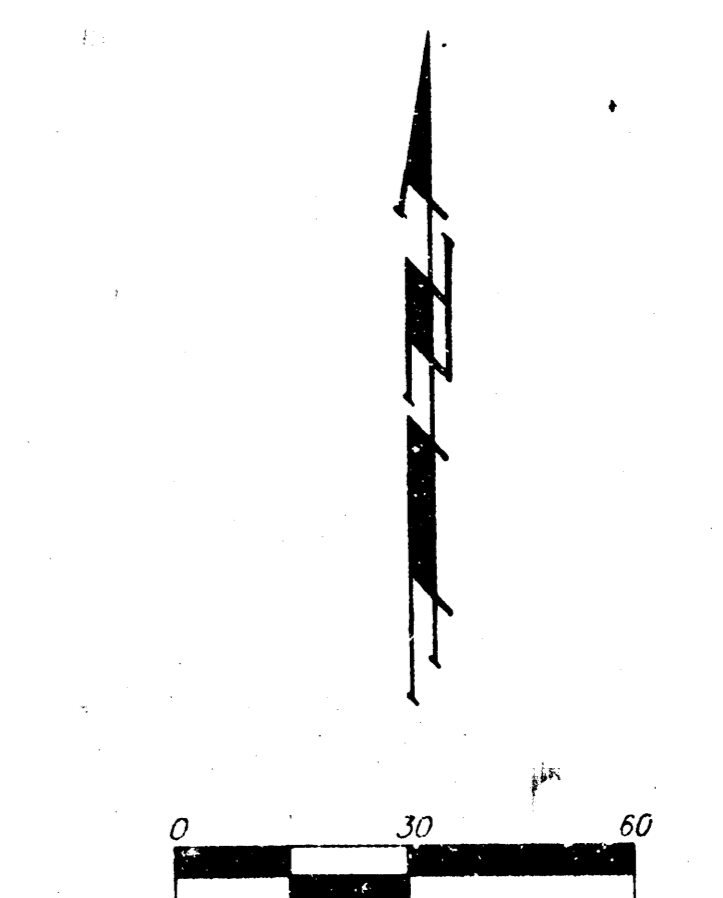
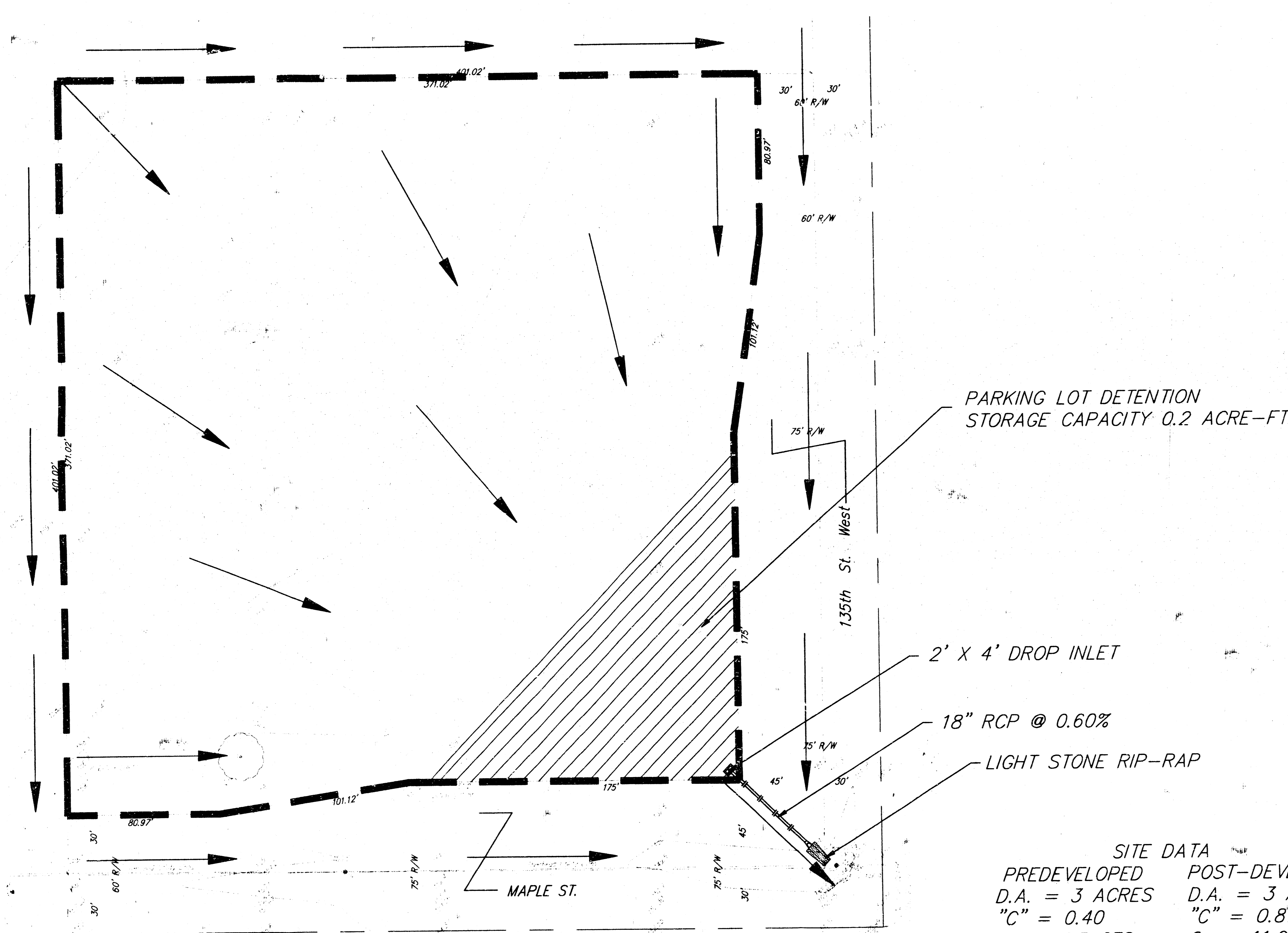


VICINITY MAP

DRAINAGE PLAN

RIVERSIDE CLINIC ADDITION

WICHITA, SEDGWICK COUNTY, KANSAS



LEGEND
 ● = Power Pole
 ○ = #4 Rebar w/ Baughman Cap (set)

LEGAL
 The east 431.02 feet of the south 431.02 feet of the SE1/4 of Sec. 23, Twp. 27-S, R-2-E of the 6th P.M., Sedgwick County, Kansas, Except the east 30 feet and the south 30 feet thereof.

BENCHMARK
 City of Wichita Bench Mark, NE Corner intersection on headwall, 34' SW to iron in Section Corner.
 Elev = 150.20

PARKING LOT DETENTION
 STORAGE CAPACITY 0.2 ACRE-FT

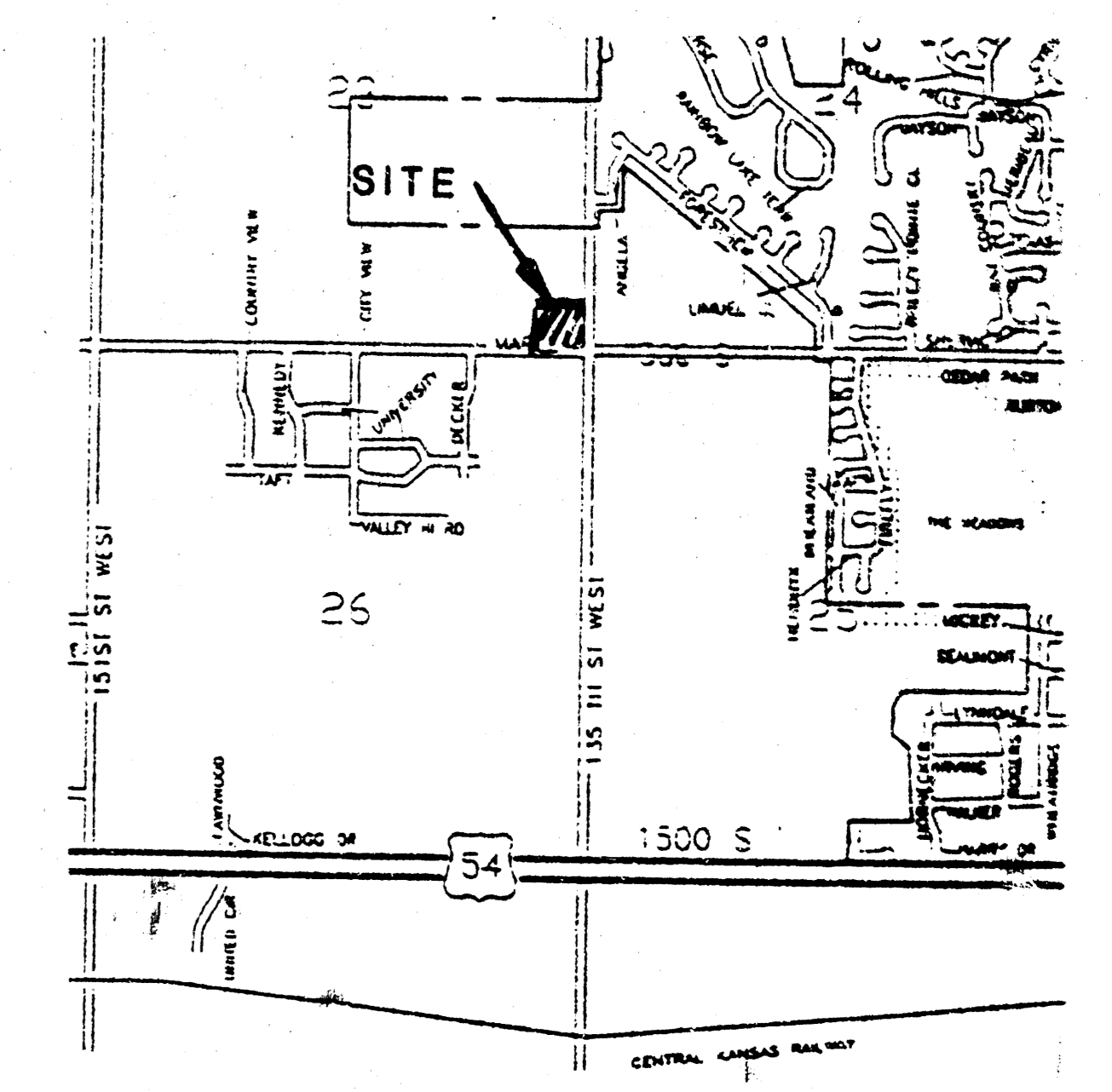
2' X 4' DROP INLET

18" RCP @ 0.60%

LIGHT STONE RIP-RAP

SITE DATA

PREDEVELOPED	POST-DEVELOPED
D.A. = 3 ACRES	D.A. = 3 ACRES
"C" = 0.40	"C" = 0.87
Q ₅ = 5.5 CFS	Q ₅ = 11.9 CFS
Q ₁₀₀ = 8.8 CFS	Q ₁₀₀ = 19.2 CFS

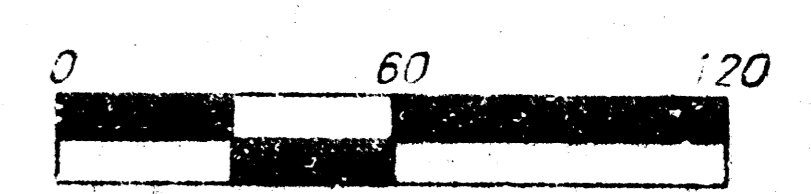
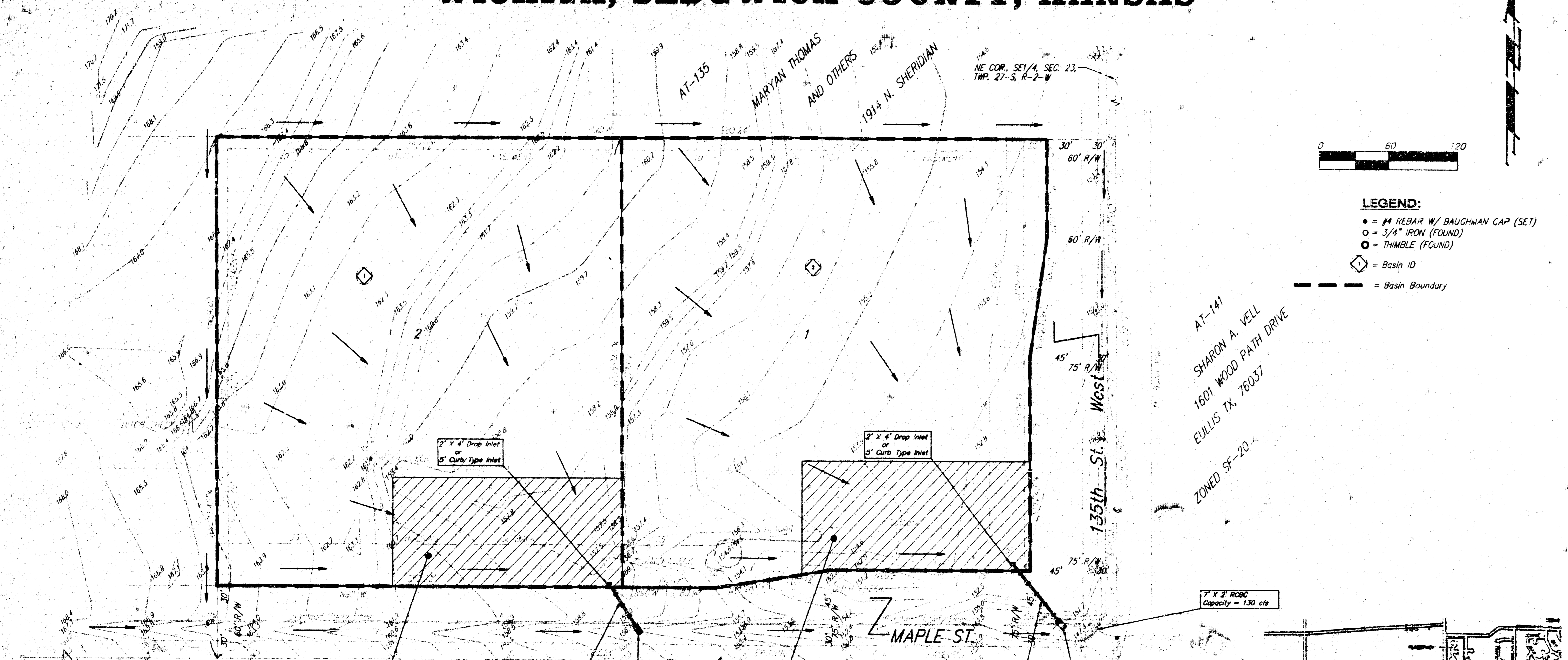


VICINITY MAP

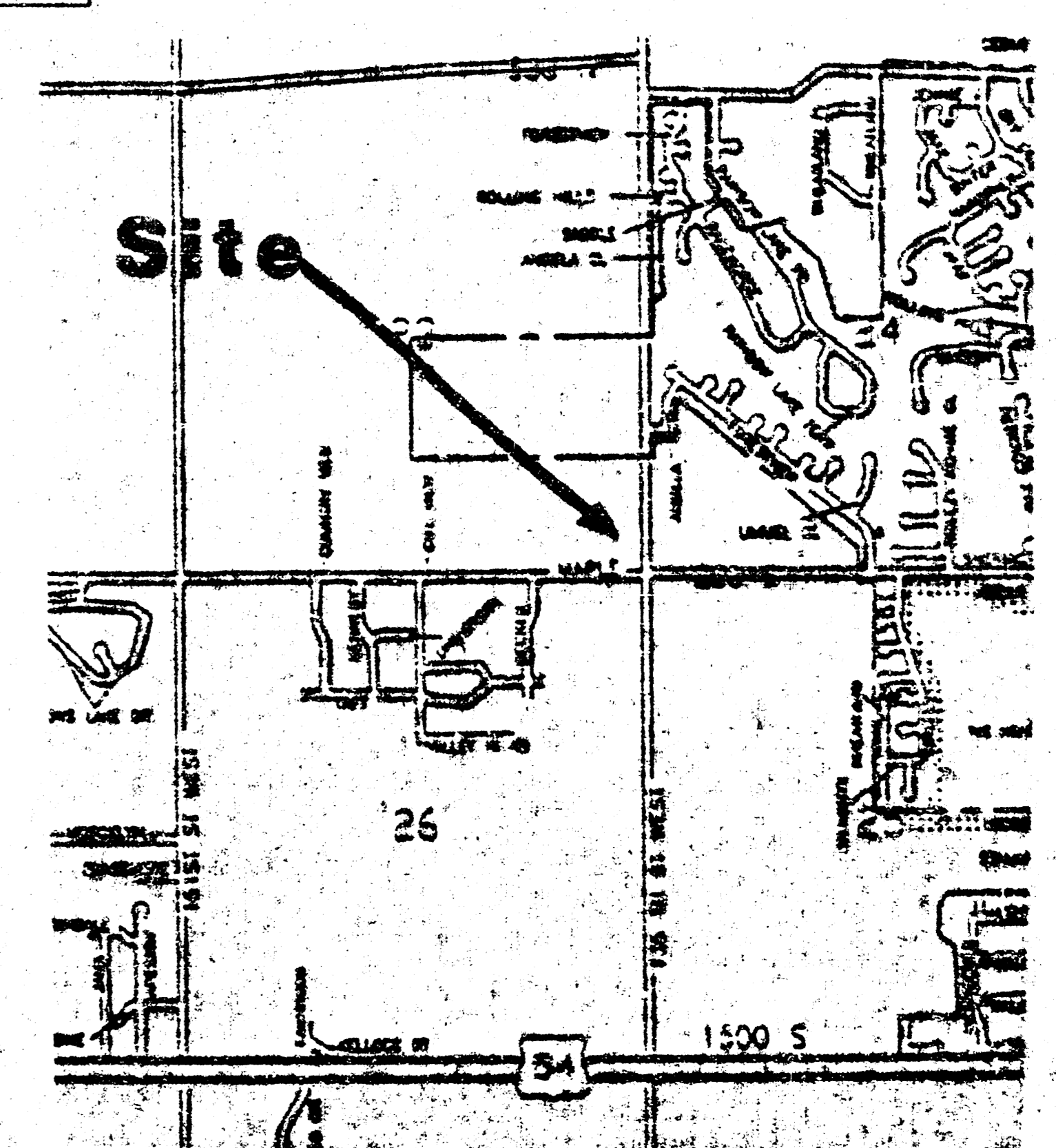
DRAINAGE PLAN

RIVERSIDE HEALTH SYSTEM ADDITION

WICHITA, SEDGWICK COUNTY, KANSAS



- LEGEND:**
- = #4 REBAR W/ BAUGHMAN CAP (SET)
 - = 3/4" IRON (FOUND)
 - = THIMBLE (FOUND)
 - ◇ = Basin ID
 - = Basin Boundary



Developed Flow Rates by the Rational Method

Drainage Area	Area (acres)	C ₂	C ₁₀₀	T _c (min.)	I _s (in/hr)	I ₁₀₀ (in/hr)	Q _s (cfs)	Q ₁₀₀ (cfs)
1	3.0	0.9	0.9	15	4.56	7.37	12.3	7.49
2	3.0	0.4	0.4	15	4.56	7.37	5.5	8.8

Pre-Developed Flow Rates by the Rational Method

Drainage Area	Area (acres)	C ₂	C ₁₀₀	T _c (min.)	I _s (in/hr)	I ₁₀₀ (in/hr)	Q _s (cfs)	Q ₁₀₀ (cfs)
1	3.0	0.4	0.4	15	4.56	7.37	5.5	8.8

AT-146-12
ZONED SF-20

HOMER L. SHULTS
14431 MAPLE
WICHITA, KS

NOTE: The proposed drainage plan provided herein is a generally defined plan to follow for design. It is recognized and assumed that upon the final design of street and storm sewer improvements within this plat that the designer will modify or alter the general drainage plan as necessary in order to implement the installation of the improvements to obtain the

VICINITY MAP