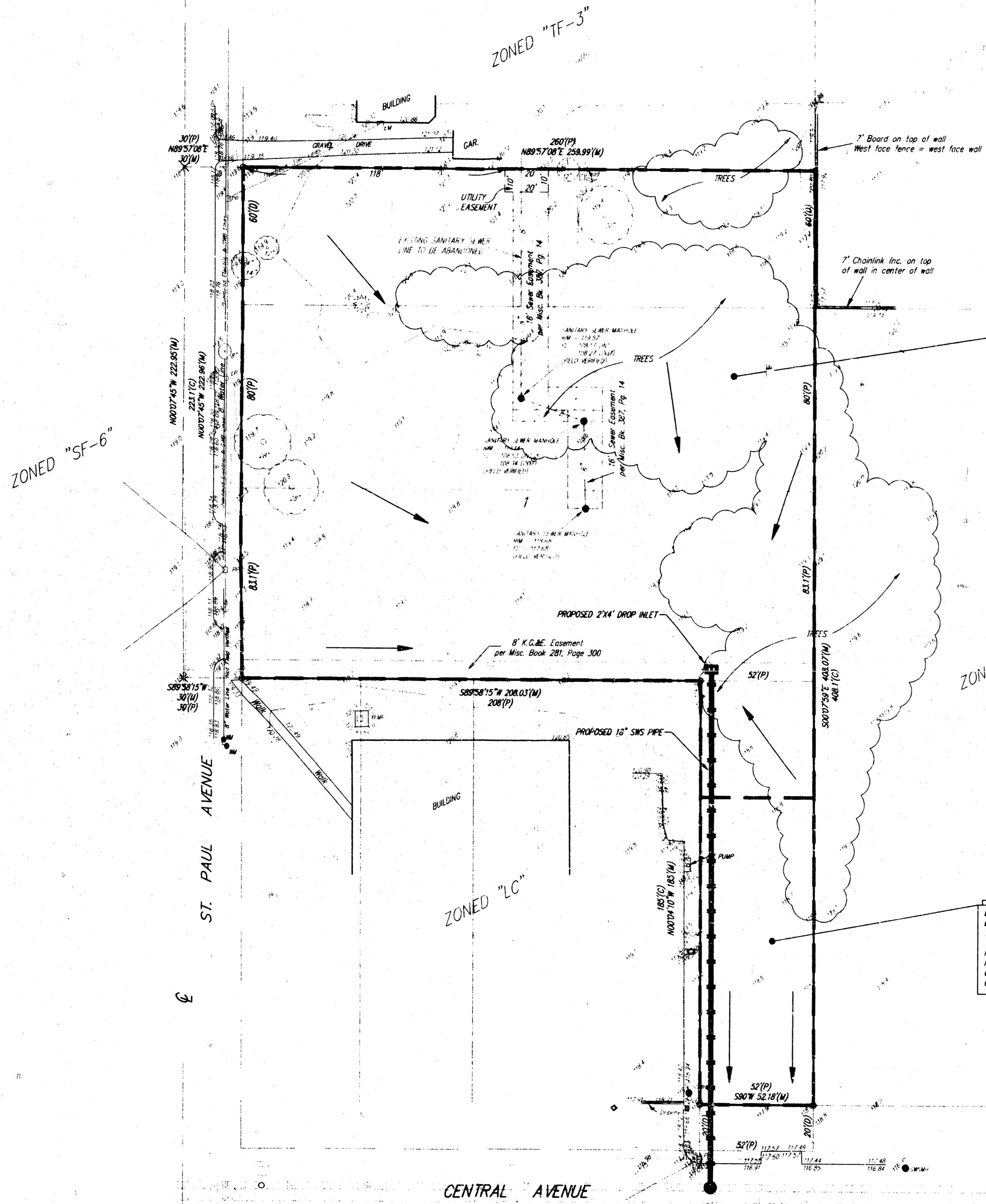


# DRAINAGE PLAN

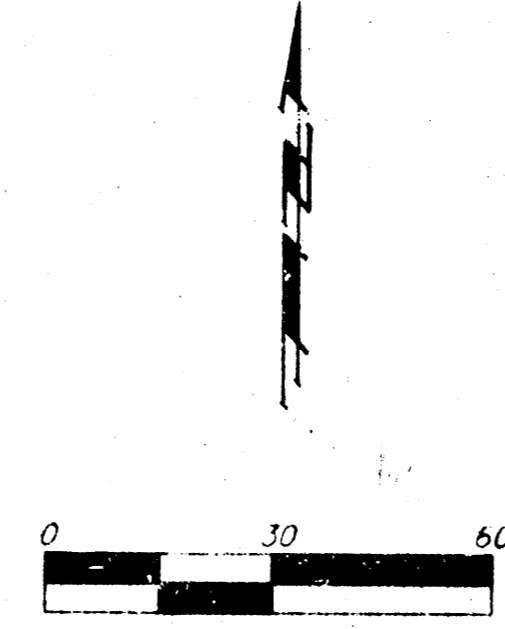
## RIVERSIDE HEALTH SYSTEM 2ND ADDITION

### WICHITA, SEDGWICK COUNTY, KANSAS



**DRAINAGE DATA:**  
 D.A. = 1.4 acres  
 Tc = 15 min  
 Cc = 0.90  
 I2 = 3.83 in/hr  
 I100 = 3.36 in/hr  
 Q2 = 4.8 cfs  
 Q100 = 9.3 cfs

**DRAINAGE DATA:**  
 D.A. = 0.2 acres  
 Tc = 15 min  
 Cc = 0.90  
 I2 = 3.83 in/hr  
 I100 = 7.36 in/hr  
 Q2 = 0.7 cfs  
 Q100 = 1.3 cfs



**LEGAL DESCRIPTION:**  
 LOT 32, EXCEPT THE SOUTH 20 FEET THEREOF,  
 ALL OF LOTS 37 AND 38 AND THE SOUTH 60  
 FEET OF LOT 39, 5th PARK GARDENS,  
 SEDGWICK COUNTY, KANSAS

**OWNER:**  
 RIVERSIDE HEALTH SYSTEMS, INC  
 2522 W. CENTRAL  
 WICHITA, KANSAS 67203  
 (316) 948-5000

**BENCHMARK:**  
 "1" T.C. 159.50 NORTH AND 15.5 EAST OF  
 CENTER LINE OF ST. PAUL AND CENTRAL  
 ELEVATION = 112.83 CFTD 04/78

- LEGEND:**
- = #4 Baughman Rebar (Set)
  - = Baughman Piv. (Found)
  - = 1/2" Iron Pipe in Thimble (Found)
  - × = 60# Nail (Set)
  - = 1/2" Iron Pipe (Found)
- INDICATES PORTION OF UTILITY EASEMENT TO BE VACATED
- EB = Electric Box
  - GM = Gas Meter
  - Guy = Guy Anchor
  - LP = Light Pole
  - P = Pine Tree
  - PP = Power Pole
  - SSM = Stormwater Sewer Manhole
  - SSM = Sanitary Sewer Manhole
  - T = Tree
  - WM = Water Meter
  - TR = Transformer
  - YH = Yard Hydrant (Spigot)

