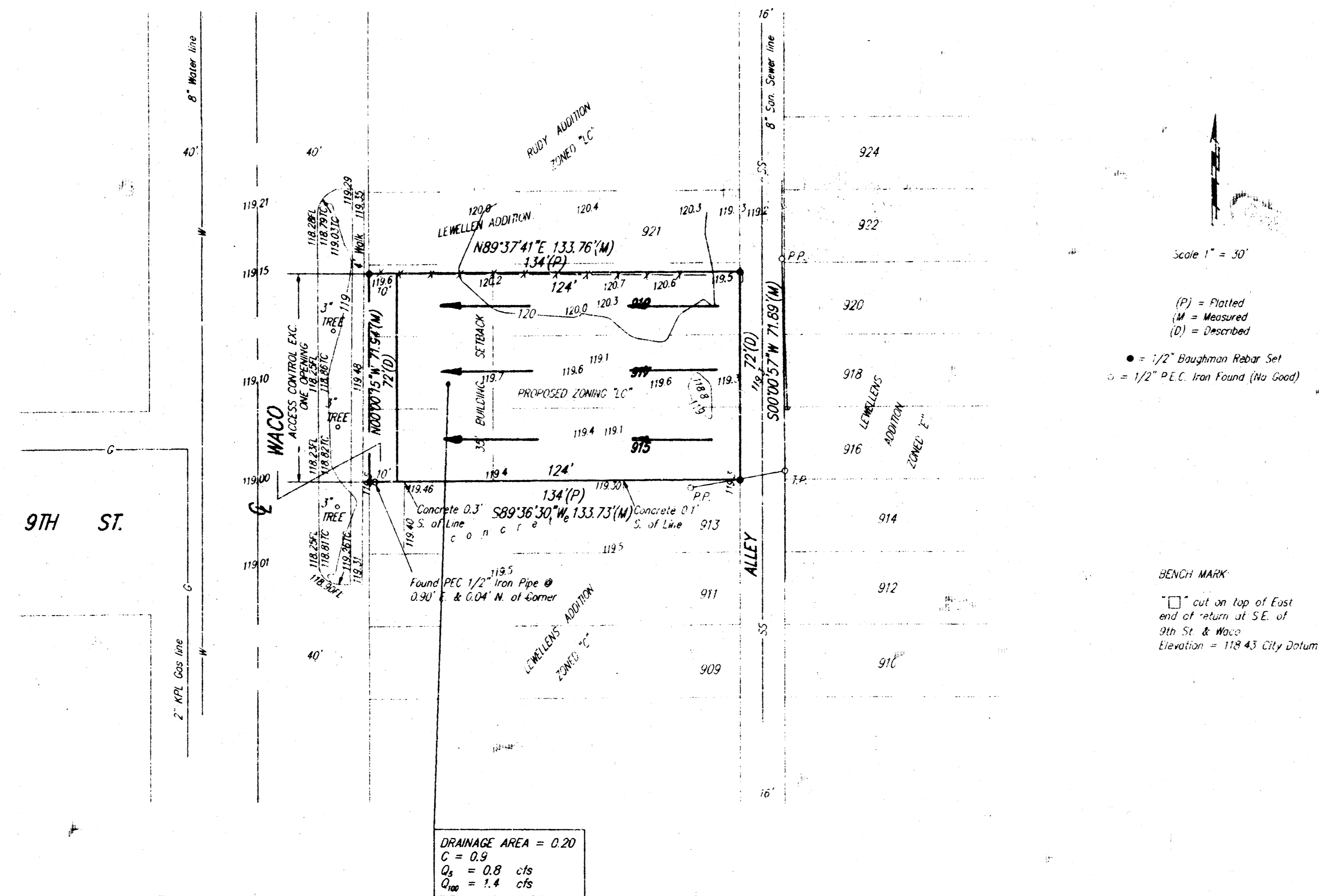


# DRAINAGE PLAN

## RUDY'S SECOND ADDITION

### WICHITA, SEDGWICK COUNTY, KANSAS



LEGAL DESCRIPTION:  
 Lot 915, 917 and 919 except the north 3 feet of Lot 915, on Waco, Lewellen Addition to the City of Wichita, Sedgwick County, Kansas

OWNER:  
 Rudy Stephan  
 1579 N. Charles  
 Wichita, KS 67203  
 265-3431