

# DRAINAGE PLAN

## J. W. RUSSELL 2ND ADDITION

### WICHITA, SEDGWICK COUNTY, KANSAS

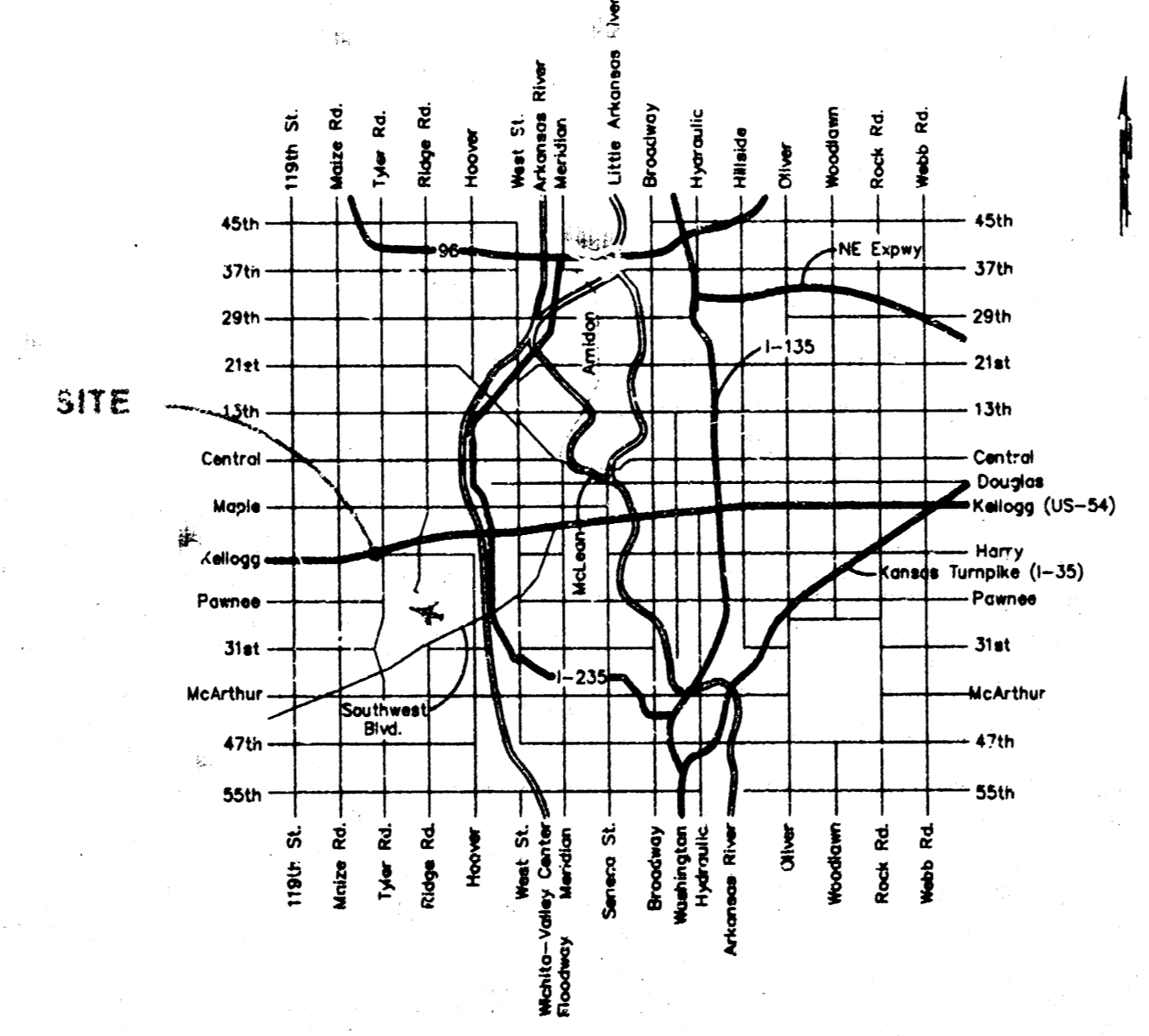
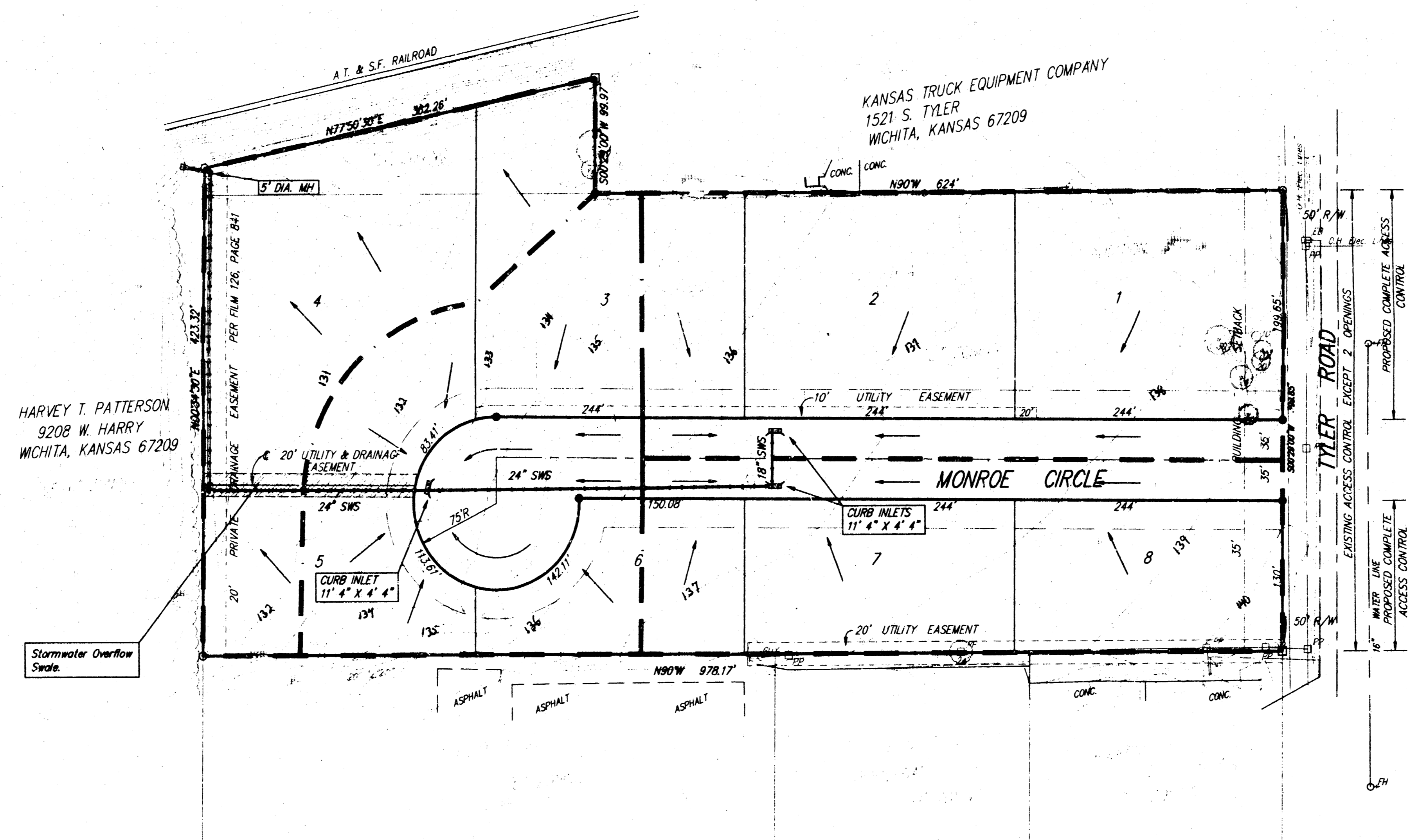
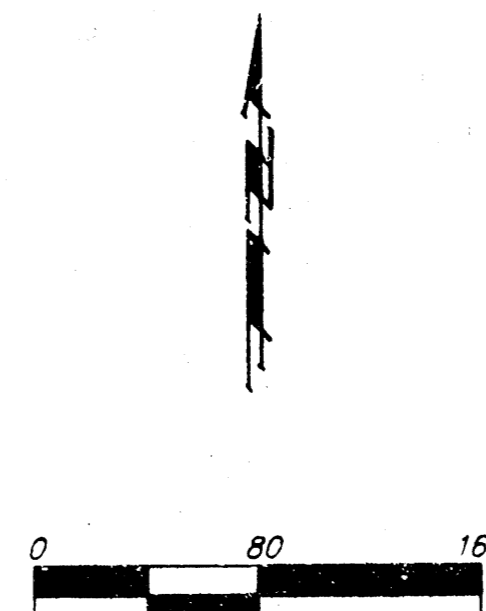
**LEGEND**

- EB = Electric Box
- OH = Fire Hydrant
- GA = Guy Anchor
- LP = Light Pole
- PP = Power Pole
- SSMH = Sanitary Sewer Manhole

**BENCHMARK**

CITY OF WICHITA DISC  
 SW CORNER OF TYLER & HARRY  
 44' WEST & 39' SOUTH OF  
 CENTER LINE  
 ELEV. ON = 141.55

- = #4 BAUGHMAN REBAR (SET)
- = 1/2" IRON (FOUND)
- = 3/4" IRON (FOUND)



Revised February 5, 1998  
 January 16, 1998

# DRAINAGE PLAN

## J. W. RUSSELL 2ND ADDITION

### WICHITA, SEDGWICK COUNTY, KANSAS

**LEGEND**

- EB = Electric Box
- CH = Fire Hydrant
- GA = Guy Anchor
- LP = Light Pole
- PP = Power Pole
- SSMH = Sanitary Sewer Manhole

**BENCHMARK**

CITY OF WICHITA DISC  
 SW CORNER OF TYLER & HARRY  
 44' WEST & 39' SOUTH OF  
 CENTER LINE  
 ELEVATION = 141.55

- ⊙ = #4 BAUGHMAN REBAR (SET)
- = 1/2" IRON (FOUND)
- = 3/4" IRON (FOUND)

