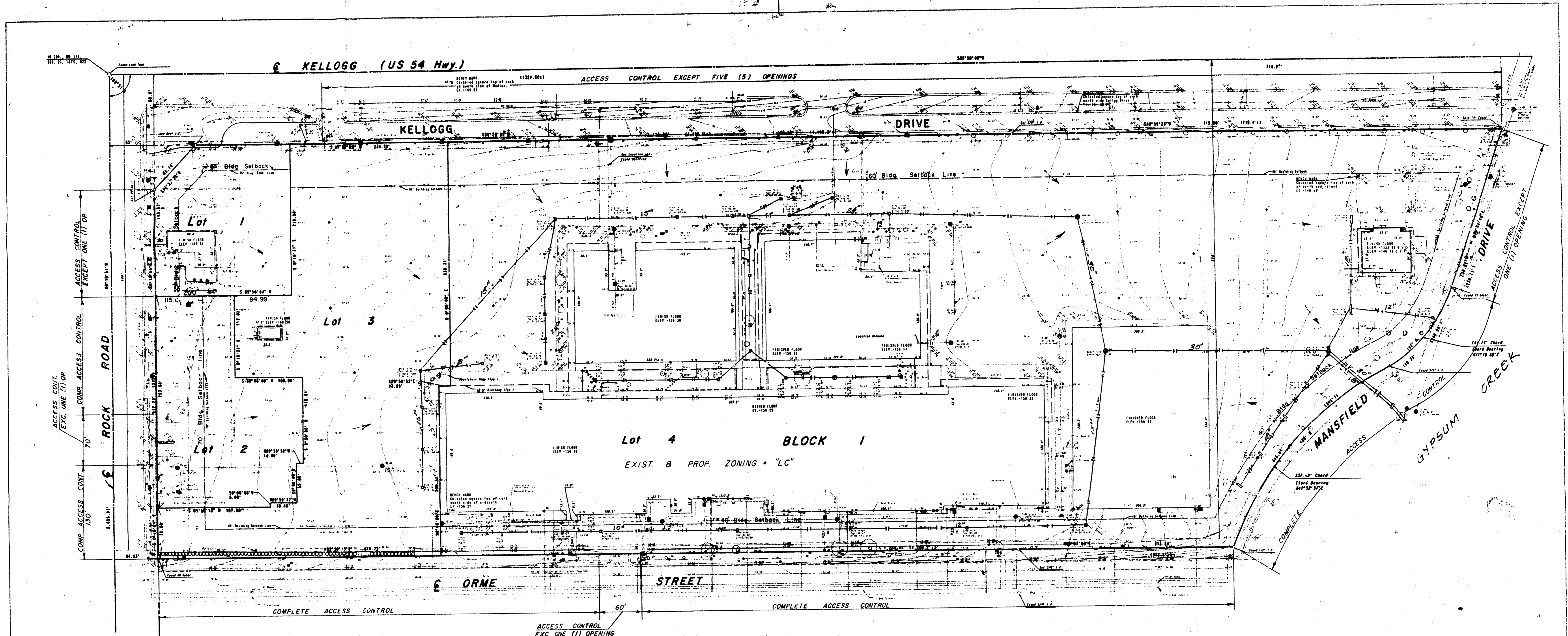


Sharon Ryan



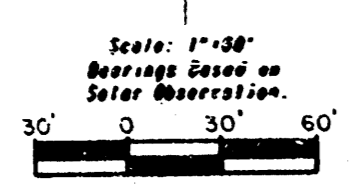
**DRAINAGE PLAN OF
SHARON RYAN ADDITION**

OWNER: General Real Estate Shares
c/o Sharon Ryan
8113 E. Kellogg Wichita, Ks. 67207

SUBDIVIDER: Reliance Woodmont
c/o Reed Oatman
6500 West Freeway, Suite 900
Fort Worth, Texas. 76116

ENGINEER: Professional Engineering Consultants p.a.
1440 English Wichita, Ks. 67211

- NOTES**
- 1- All lots shall continue to drain to Gypsum Creek via existing Storm Sewers, drives, flumes, new Storm Sewers, needed to accommodate site development, and/or other approved facilities.
 - 2- Minimum Pad Elevations for new buildings shall be set at 1 (one) foot above FEMA Floodplain.
 - 3- Elevations shown based on City of Wichita Datum.



- LEGEND**
- 1. Manhole
 - 2. Catch Basin
 - 3. Storm Manhole
 - 4. Light Pole
 - 5. Power Pole
 - 6. Electrical Meter
 - 7. Gas Meter
 - 8. Water Meter
 - 9. Telephone Pole or Box
 - 10. Fire Hydrant
 - 11. Fire Alarm
 - 12. Fire Alarm
 - 13. Fire Alarm
 - 14. Fire Alarm
 - 15. Fire Alarm
 - 16. Fire Alarm
 - 17. Fire Alarm
 - 18. Fire Alarm
 - 19. Fire Alarm
 - 20. Fire Alarm
21. 1/2\"/>