

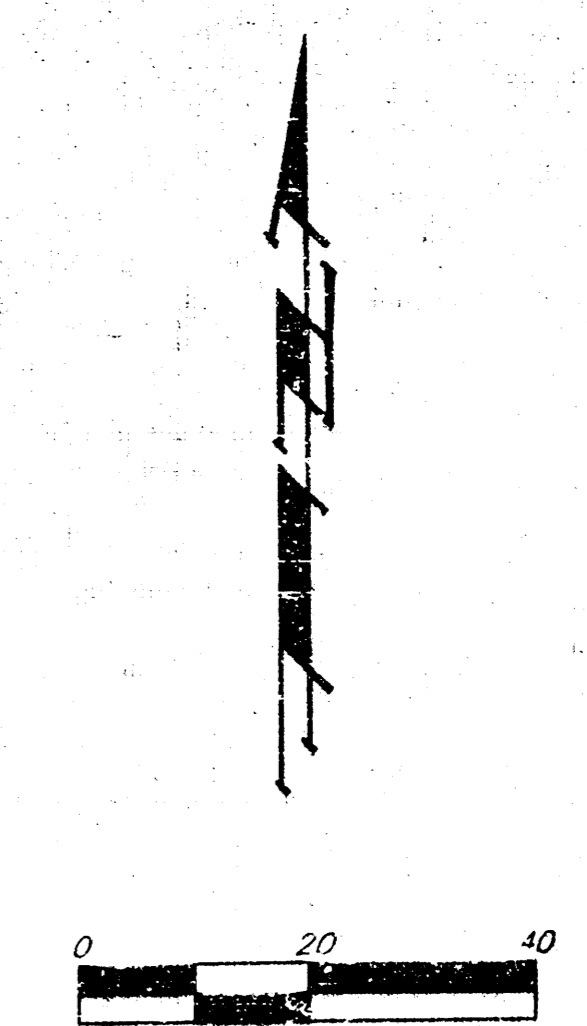
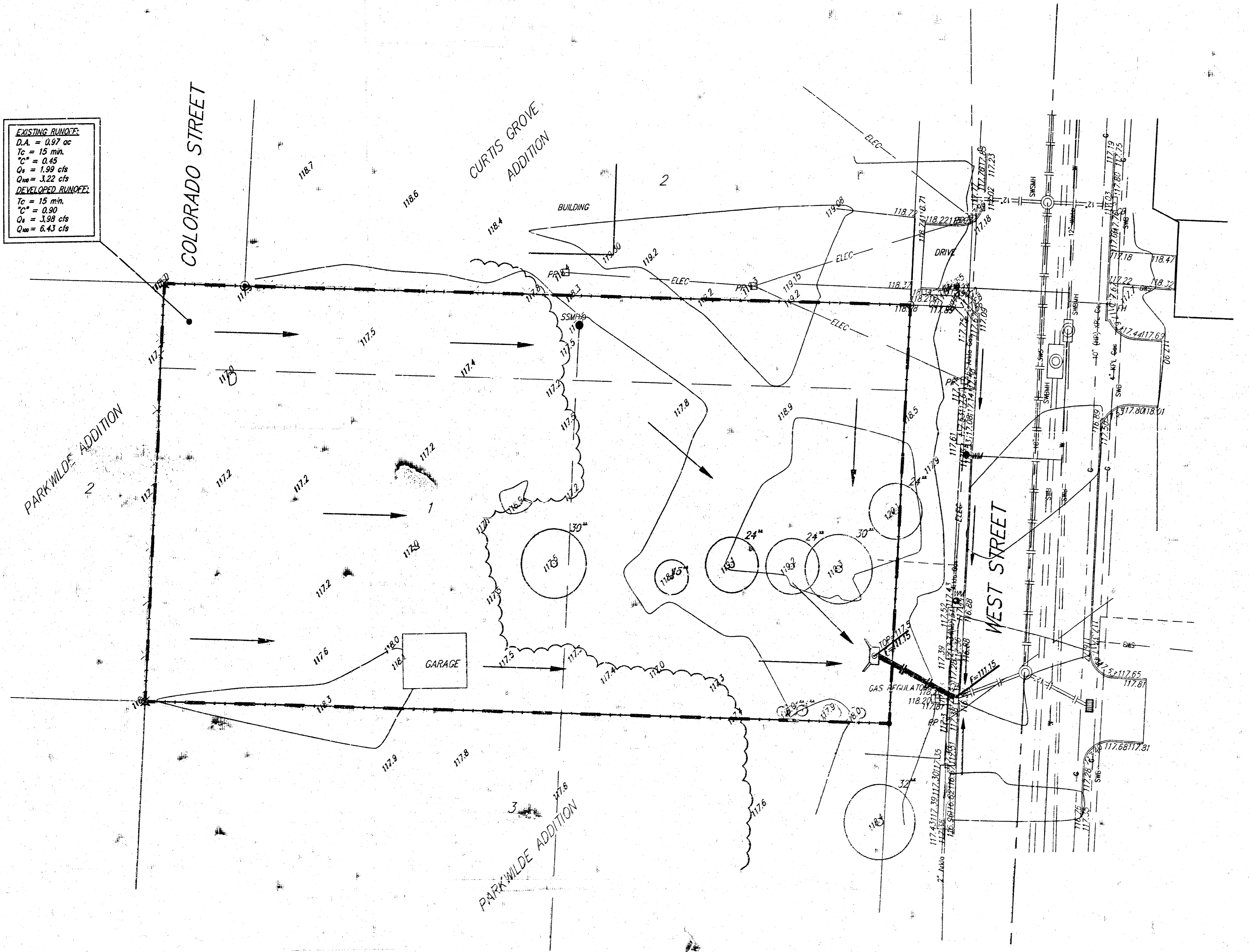
# DRAINAGE PLAN

## S. & D EQUIPMENT ADDITION

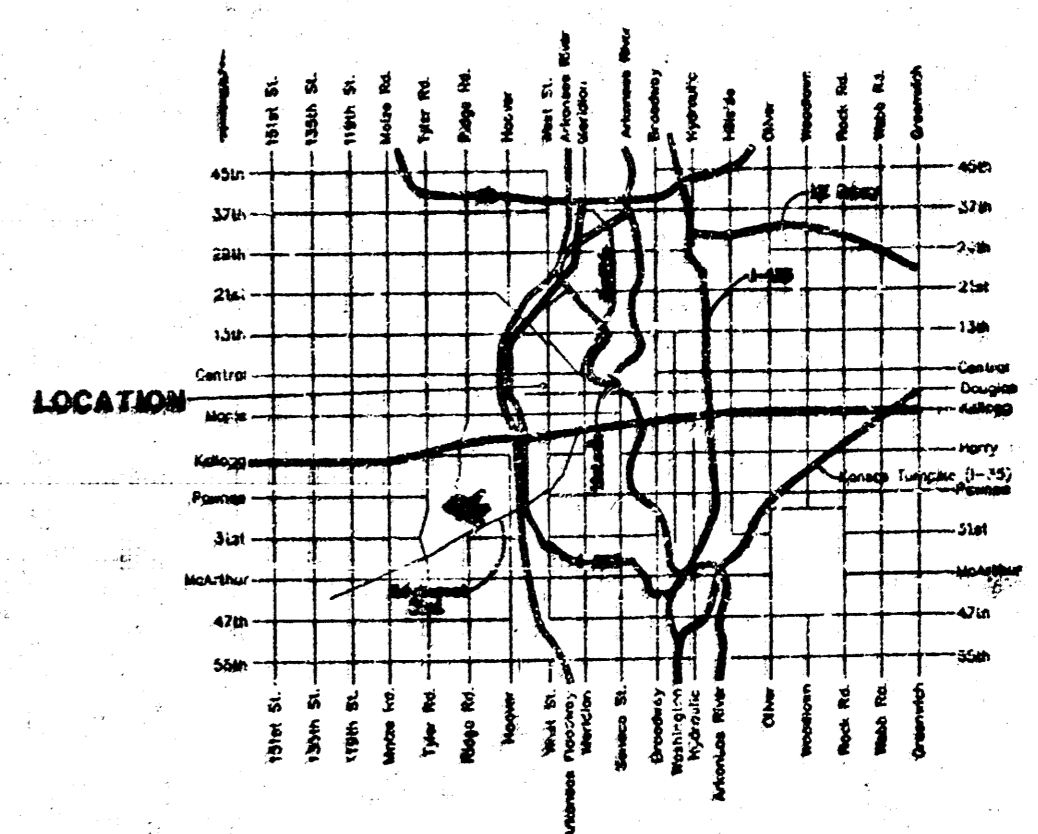
### WICHITA, SEDGWICK COUNTY, KANSAS

**EXISTING RUNOFF:**  
 D.A. = 0.97 ac  
 Tc = 15 min.  
 C<sub>s</sub> = 0.45  
 Q<sub>1</sub> = 1.99 cfs  
 Q<sub>10</sub> = 3.22 cfs

**DEVELOPED RUNOFF:**  
 Tc = 15 min.  
 C<sub>s</sub> = 0.90  
 Q<sub>1</sub> = 3.98 cfs  
 Q<sub>10</sub> = 6.43 cfs



- = #4 REBAR W/ "BAUGHMAN" CAP (SET)
- ⊙ = #5 REBAR W/ "ACL5" CAP (FOUND)
- ⊗ = 1" IRON (FOUND)
- = 1/2" IRON (FOUND)
- = THIMBLE (FOUND)
- ☆ = BOLT (FOUND)
- ⊕ = RAILROAD SPIKE (FOUND)
- ⊗ = #4 REBAR (FOUND)
  
- (M) = MEASURED
- (D) = DESCRIBED
- (P) = PLATTED
- (C) = CALCULATED
- (C-P) = CALCULATED PER PLATTED INFO.
- (C-D) = CALCULATED PER DEED INFO.
- (DEED) = DEED DESCRIPTION
- (C-DESC) = CALCULATED PER TRACT DESCRIPTION
  
- CB = Catch Basin
- PP = Power Pole
- FH = Fire Hydrant
- GU = Guard Post (Ballard)
- SSMH = Sanitary Sewer Manhole
- SWSMH = Southwestern Bell Manhole
- SWSMH = Stormwater Sewer Manhole
- T = Tree
- WM = Water Meter



**NOTE:**  
 The site will be required to use parking lot detention to meet existing run-off conditions. The location and size of the detention area will be determined from future site specific plans.