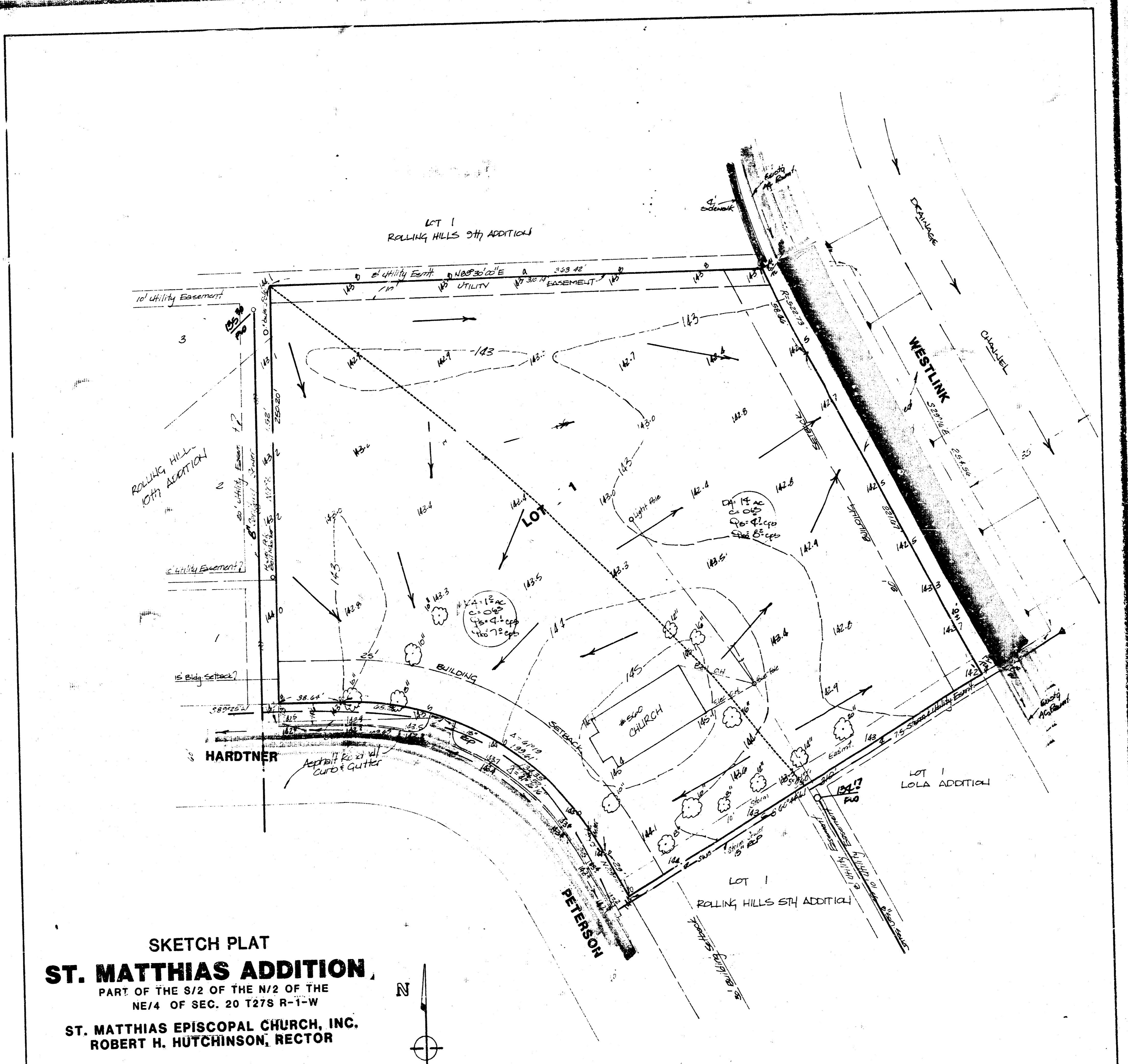
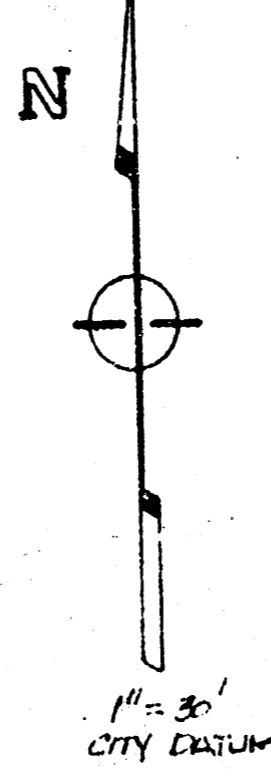


ST. MATTHIAS' ADDITION
(Drainage)



SKETCH PLAT
ST. MATTHIAS ADDITION,
 PART OF THE S/2 OF THE N/2 OF THE
 NE/4 OF SEC. 20 T27S R-1-W
ST. MATTHIAS EPISCOPAL CHURCH, INC.
ROBERT H. HUTCHINSON, RECTOR

BEACH MARK: "1" cut in top of curb, south
 of E. 7th Line, Rolling Hills 10th
 Addition. Elev: 142.89 City Datum



GENERAL NOTES

The lot will be developed for a church site and parking lot areas. The total developed area within the lot will be approximately 50%, which will provide a run off factor of 0.65 as indicated. The lot will be graded to drain to Hardtner and Westlink. Hardtner is paved and drains to the 15" storm sewer with inlets. Westlink is to be paved soon and drains S.E. to an open flume at Shade and Westlink Avenue, which discharges into the drainage channel adjacent to Westlink. Discharging run off water will flow to the streets through either driveways or through flumes as necessary when the site plans are graded and finalized.

DRAINAGE PLAN *1/5/85*

21 JULY 85
LAUGHMAN COMPANY, P.A.
 SURVEYING & ENGINEERING
 316 262-7271 • 330 LAURA • WICHITA, KANSAS 67211