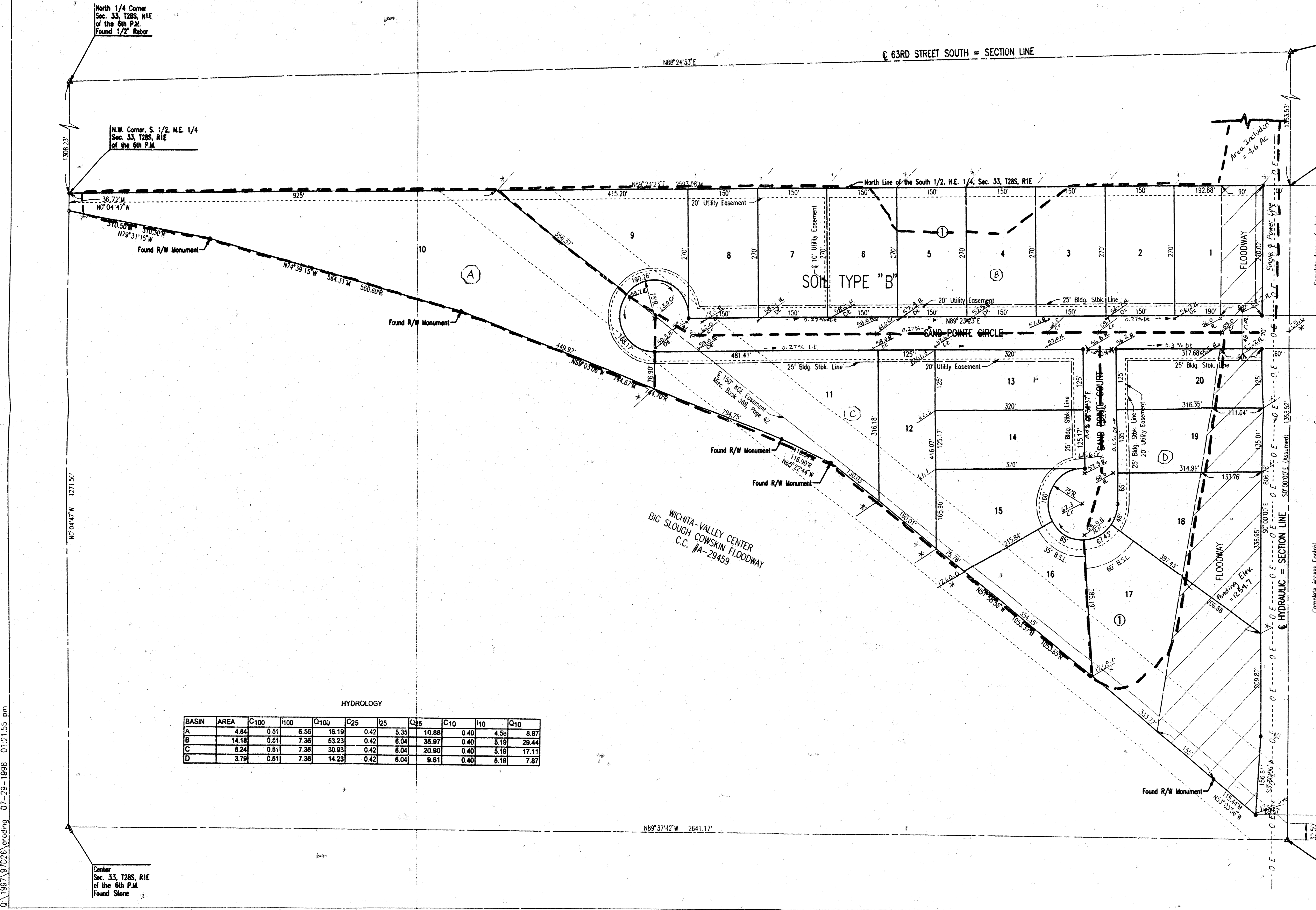


# SAND POINTE ADDITION TO SEDGWICK COUNTY, KANSAS DRAINAGE PLAN



North 1/4 Corner  
Sec. 33, T28S, R1E  
of the 6th P.M.  
Found 1/2" Rebar

N.E. Corner  
Sec. 33, T28S, R1E  
of the 6th P.M.  
Found 3/4" I.P. in Thimble

N.W. Corner, S. 1/2, N.E. 1/4  
Sec. 33, T28S, R1E  
of the 6th P.M.

N.E. Corner, S. 1/2, N.E. 1/4  
Sec. 33, T28S, R1E  
of the 6th P.M.

N7°04'47" W 1271.50'

Center  
Sec. 33, T28S, R1E  
of the 6th P.M.  
Found Stone

East 1/4 Corner  
Sec. 33, T28S, R1E  
of the 6th P.M.  
Found 5/8" Bar

SCALE: 1"=100'  
TOPOGRAPHY - APRIL 1998  
• SET 3/4" I.P. W/ CAP, UNLESS NOTED OTHERWISE  
M = MEASURED  
R = RECORD

B.M. - CHISEL "B" ON HIGH EDGE OF CURB AT S.E. CORNER OF CURB INLET ON WEST SIDE OF HAZE ROAD, 0.42 MILES SOUTH OF 21ST STREET NORTH, 900+ FEET NORTH OF EAST 1/4 CORNER SEC. 7, T27S, R1W OF THE 6TH P.M. ELEV.=161.10 CITY DATUM

LEGEND  
X Hatch Existing Location  
D1 Ditch  
Cr Road  
F Floodway

Minimum Elev. 125.11

HYDROLOGY

BASIN	AREA	C100	I100	C100	C25	I25	C25	C10	I10	C10
A	4.84	0.51	6.56	16.19	0.42	5.35	10.88	0.40	4.59	8.87
B	14.18	0.51	7.36	53.23	0.42	6.04	35.97	0.40	5.19	28.44
C	8.24	0.51	7.36	30.93	0.42	6.04	20.90	0.40	5.19	17.11
D	3.79	0.51	7.36	14.23	0.42	6.04	9.81	0.40	5.19	7.87

DSNR, KEP, OPIS, KER SCALE: 1"=100.00  
0:\1997\97026\working 07-29-1998 01:21:55 pm

**SAND POINTE ADDN**  
**APPROVED**  
**DRAINAGE PLAN**  
*Approved by  
the County*