

SAVANNA AT CASTLE ROCK RANCH 10TH ADDITION

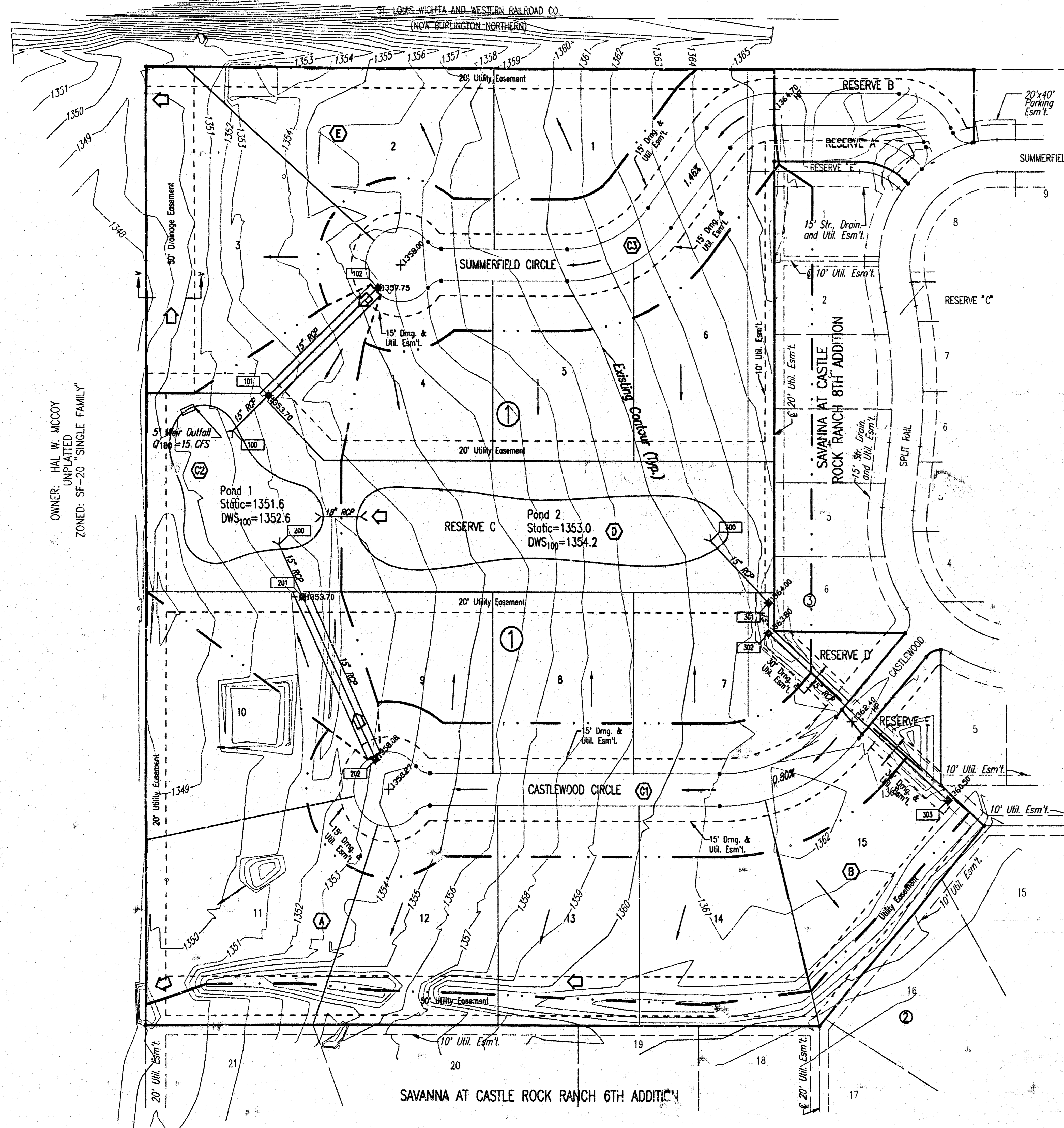
TO SEDGWICK COUNTY, KANSAS

DRAINAGE PLAN

N.E. CORNER, S.E. 1/4
SEC. 11, T27S, R2E
OF THE 6TH P.M.

OWNER: HAL W. MCCOY
UNPLATTED
ZONED: SF-20 'SINGLE FAMILY'

DSNR: RB OPER: BLB SCALE: 1=60.00
Q:\2003\03342\LD0 03342.dwg\Drainage 03-12-2004 10:18:31 am



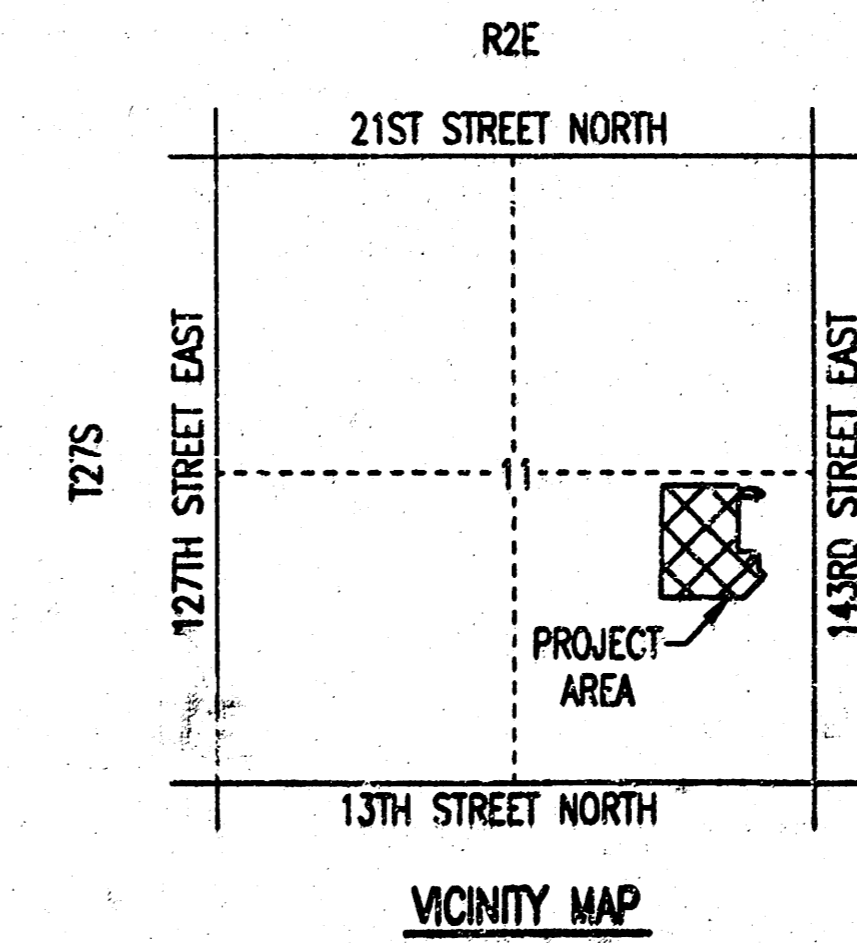
SCALE: 1" = 60'

• = 1/2" REBAR W/PEC CAP UNLESS OTHERWISE NOTED

LEGEND

- (A) BASIN IDENTIFIER
- MAJOR BASIN BOUNDARY
- - - MINOR BASIN BOUNDARY
- ⇨ MAJOR STORM WATER OVERFLOW (Q100)
- ⇨ MINOR STORM WATER FLOW (Q2)
- 130 NODE IDENTIFIER
- X-305.50 SPOT ELEVATION (PROPOSED)
- X-305.50 HIGH POINT ELEVATION (PROPOSED)
- STORM SEWER AND INLET
- STORM SEWER AND MANHOLE

SEE SUPPORTING CALCULATIONS FOR HYDROLOGY



- BENCHMARKS:**
- BM#92: (NATURAL BENCHMARK) CHISELED "4" ON TOP OF STEEL CORNER POST 10 HOURS CORNER 17' NORTH AND 13' WEST OF THE CORNER OF LOT 1, BLOCK 2, SAVANNA @ CASTLE ROCK RANCH 8TH ADDITION @ WEST END OF CASTLEWOOD STREET. ELEV. = 1353.36 N.G.V.D.
 - BM#4: 600 STEP WALLS ON WEST FACE OF COTTAGEWOOD, 300ft SOUTH OF RAILROAD TRACKS, 50' EAST OF WEST PROPERTY LINE OF SAVANNA PROPERTY. ELEV. = 1351.64 N.G.V.D.
 - BM#6: CHISELED "4" ON NORTH RM SS MANHOLE NEAR SW CORNER LOT 1, BLOCK 3, SAVANNA @ CASTLE ROCK RANCH, 8TH ADDITION. ELEV. = 1366.24 N.G.V.D.
 - BM#7: CHISELED "4" ON NORTH RM SS MANHOLE NEAR SW CORNER LOT 6, BLOCK 3, SAVANNA @ CASTLE ROCK RANCH 8TH ADDITION. ELEV. = 1365.61 N.G.V.D.

MINIMUM OPENINGS	ELEVATION (N.G.V.D.)
BLOCK 1	1354.0
LOTS 3 & 10	1354.0
LOTS 4 through 9	1357.2

