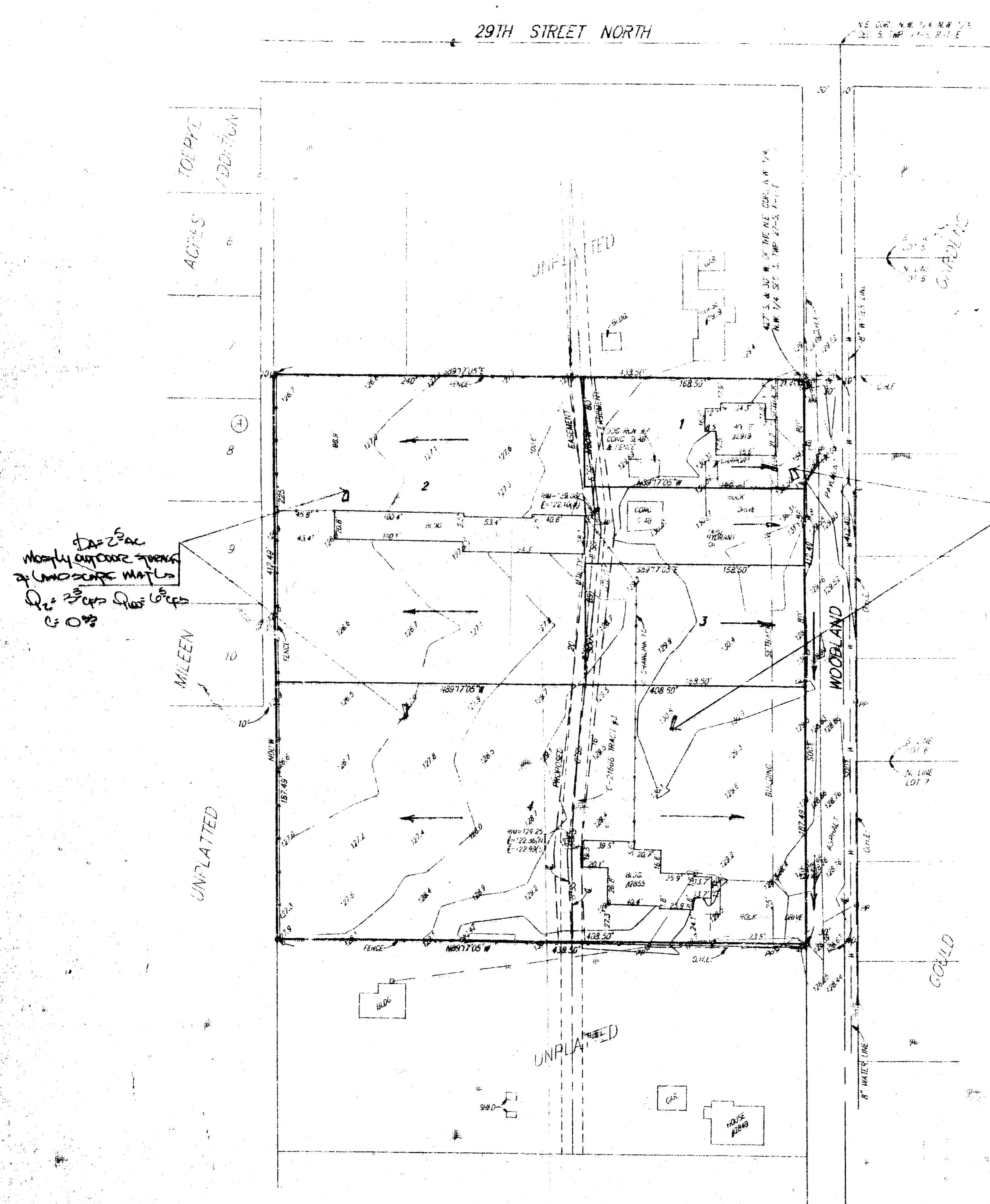


PRELIMINARY PLAT SCHLABACH ADDITION

WICHITA, SEDGWICK COUNTY, KANSAS

A tract in the East 15 Acres of the N.W. 1/4 of the E.W. 1/4 of Sec. 5, Twp. 27-S, R-1-E, described as beginning 427 feet South of the NE Corner of said 15 Acres; thence South along the East line of said 15 Acres, 412.49 feet; thence West parallel with the North line of said 15 Acres, 438.5 feet to the West line of said 15 Acres; thence North 412.49 feet; thence East 438.5 feet to beginning.

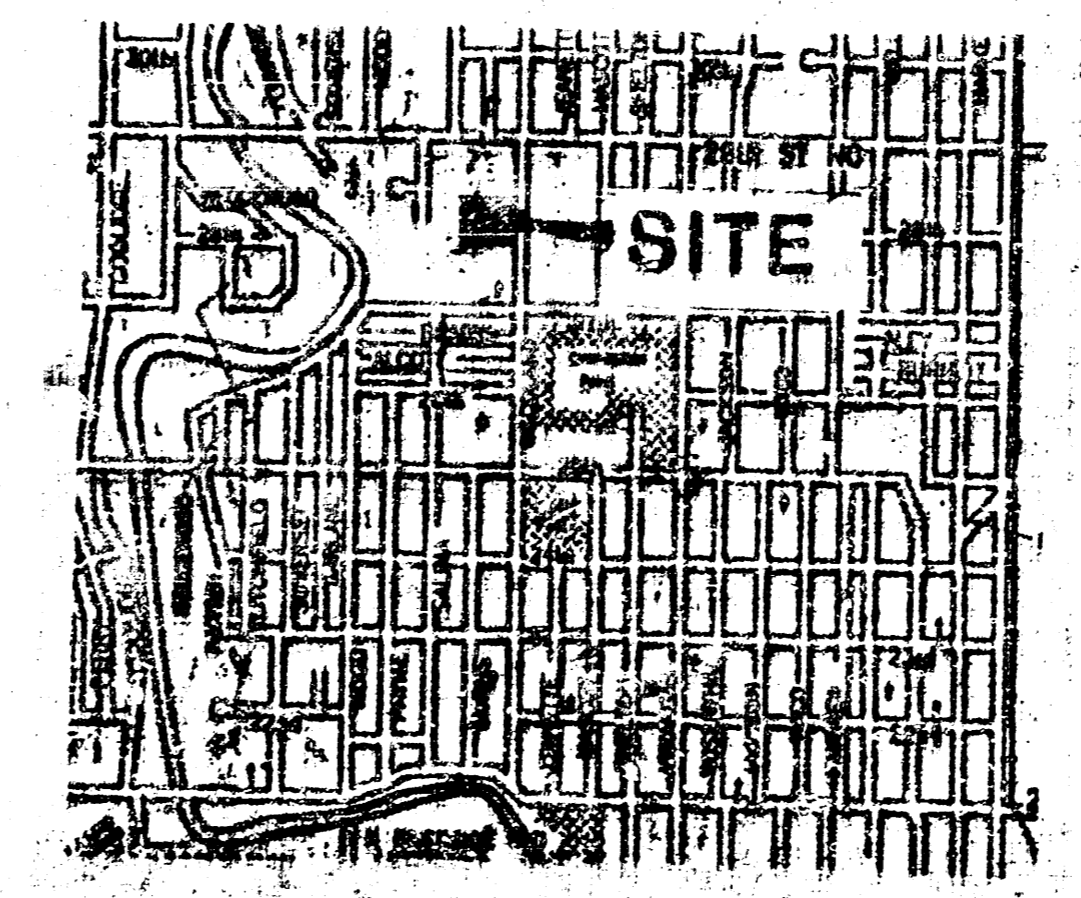
DEAN SCHLABACH & J. SCHLABACH
2919 WOODLAND
WICHITA, KS 67204
PH: 264-0451



CA - CIVIC RESIDENTIAL
LOTS & LANDSCAPE STORAGE YARD C-035
FL: 1.5 cfs C100 = 2.3 cfs.

DA - CIVIC
MOBILE OFFICE STORAGE
& LANDSCAPE STORAGE
C-035

1" = 50'
 ● = 1/2" REBAR w/ "DAUGHMAN" CAP (SET)
 ○ = 3/4" RUM (FOUND)
 ⊙ = 1" RUM (FOUND)
 FOUND CORNERS ARE OF UNGENEDED
 ORIGIN UNLESS IDENTIFIED ON SHEET.
 BEARING DATA = ASSUMED
 BENCHMARK
 188 SHOE IN P.R. 1/2" E & 1/2" WOODLAND AND
 483 1/2" S. & 1/2" 29TH STREET NORTH
 2247' = 2248 (OFF-DATA)



Vicinity Map

Off-site drainage agreement

GENERAL DRAINAGE PLAN NOTES -
 The proposed four lot plat drains partially to Woodland but the majority of the site presently drains to the west across other existing large acre parcels. As the lots develop in the future, each lot will need to maintain its drainage and fill such that no additional runoff is directed onto the neighboring lots in an adverse form.
 Presently, the majority of the westerly portion of the plat is operating as a landscaping storage facility which maintains its own drainage without any runoff onto the parcels west of this plat.

DRAINAGE PLAN