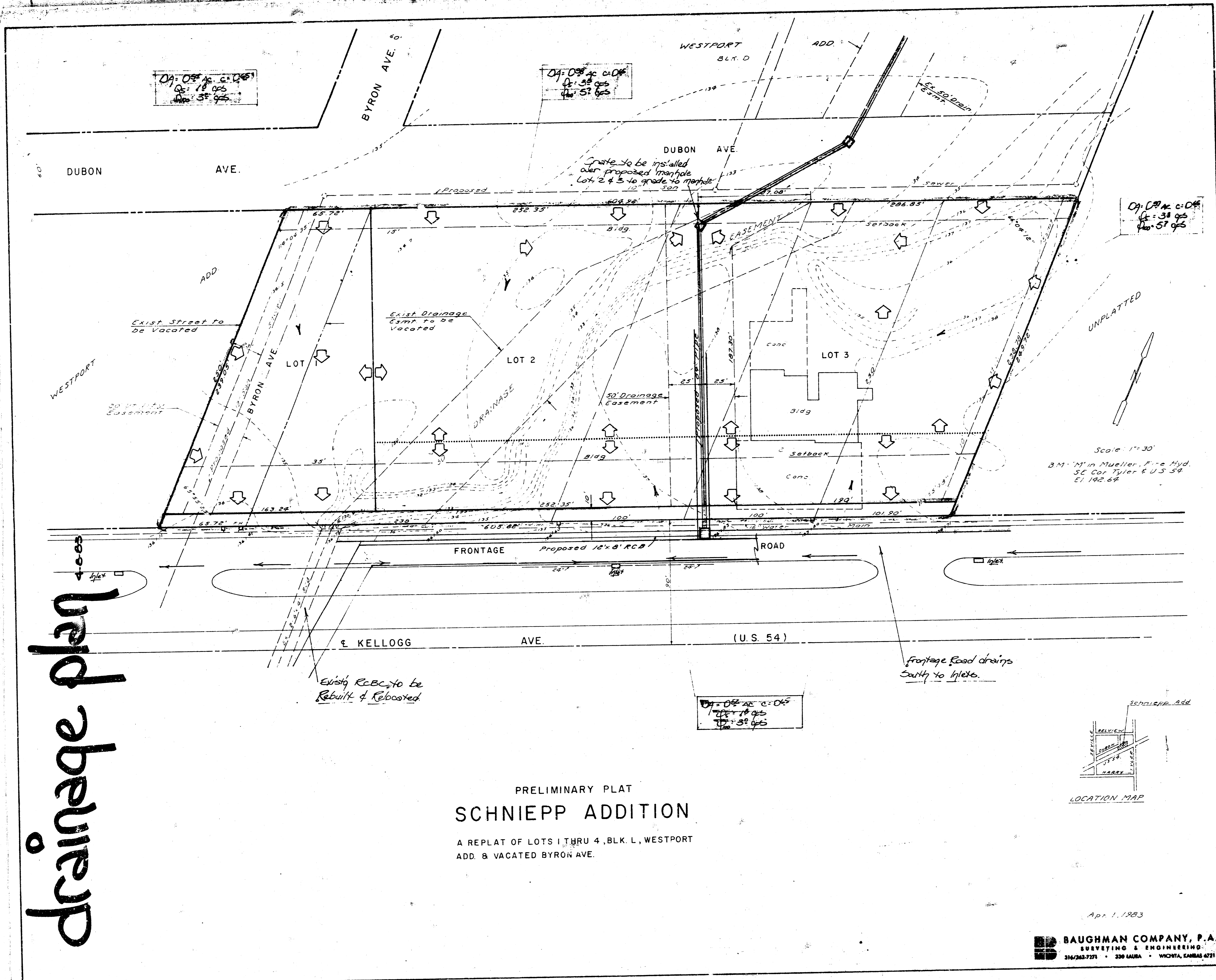


SCHNIEPP ADDITION
(Drainage)

BAUGHMAN COMPANY, P.A.
SURVEYING & ENGINEERING
316/262-7271 • 230 LAURA • WICHITA, KANSAS 67211

CONFIRMATION
MEMO

PROJECT: SCHNIEPP ADDITION
DATE: 4-2-83
JOB NO.:
COPIES TO:
TO: Chris Breitenstein
FROM: N. Brent Wooten
REFERENCE: Drainage Plan



drainage plan

PRELIMINARY PLAT
SCHNIEPP ADDITION

A REPLAT OF LOTS 1 THRU 4, BLK. L, WESTPORT
ADD. & VACATED BYRON AVE.

Apr. 1, 1983
BAUGHMAN COMPANY, P.A.
SURVEYING & ENGINEERING
316/262-7271 • 230 LAURA • WICHITA, KANSAS 67211

Preliminary Plat is scheduled for Subdivision for April 14, 1983.
Areas will be developed as avg. commercial sites. Runoff factor for all areas will be used as 0.65.
Lots will drain presently as they do to the frontage road via the existing drainage ditch which flows SW across this plat and is discharged by the existing double 6" x 4" RCBC.
A proposed storm sewer is to cross this property in the future which is indicated on the plan. The existing RCBC is to be resized and relocated. This project is to be done by the City of Wichita.
Lot 1 (0.54 Ac.) will drain south to the frontage road. Runoff will be conveyed to the road via driveways or flumes.
Q₁₀₀ = 3.6 CFS.
Only the south 50 feet of Lots 2 & 3 adjacent to the frontage road will drain to the frontage road and the existing inlets along the south side of the road as indicated. Drainage areas for the area of both lots is 0.52 Ac.
Q₁₀₀ = 3.0 CFS. Runoff will be conveyed to the frontage road thru driveways.
The remainder of the drainage areas of Lots 2 (0.98 Ac.) and Lot 3 (0.97 Ac.) will drain north to a proposed grate inlet-manhole which is included in the new storm sewer.
Dubon Ave. adjacent to Lots 2 & 3 is not open at this time. Dubon and Byron to the west are unpaved and pond runoff presently.