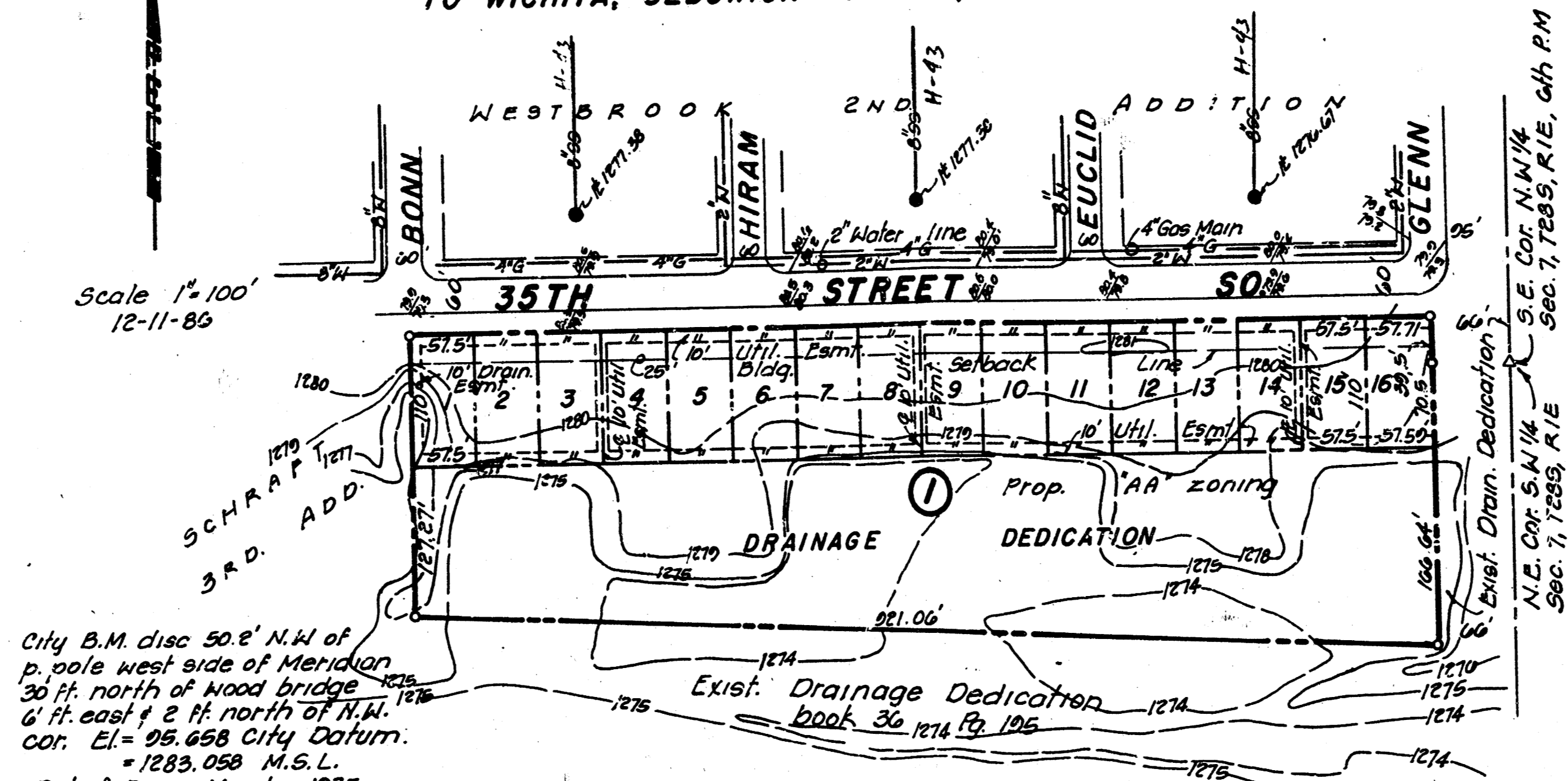


SCHRAFT 4TH ADDITION
(Drainage)

PRELIMINARY PLAT OF
SCHRAFT 4th ADDITION - DRAINAGE PLAN
TO WICHITA, SEDGWICK COUNTY, KANSAS.

Scale 1"=100'
12-11-86



City B.M. disc 50.2' N.W. of
pole west side of Meridian
36 ft. north of Wood Bridge
6 ft. east of 2 ft. north of 1 ft.
Cor. E1 = 05.658 City Datum.
= 1283.058 M.S.L.
Dat of Topo March, 1975
Min. Rod Elev. 1282.85 m.s.l.

Owner: Michael J. Boyd-Walter Morris & Son
128 S. Dellrose 67208

Engineer: PEC p.a.
1440 English 67211

The Lots shall be
graded to drain to
the street & the
Drainage R/W.

