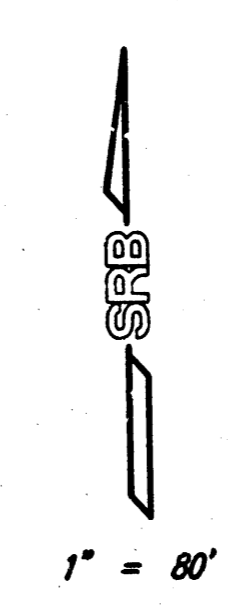
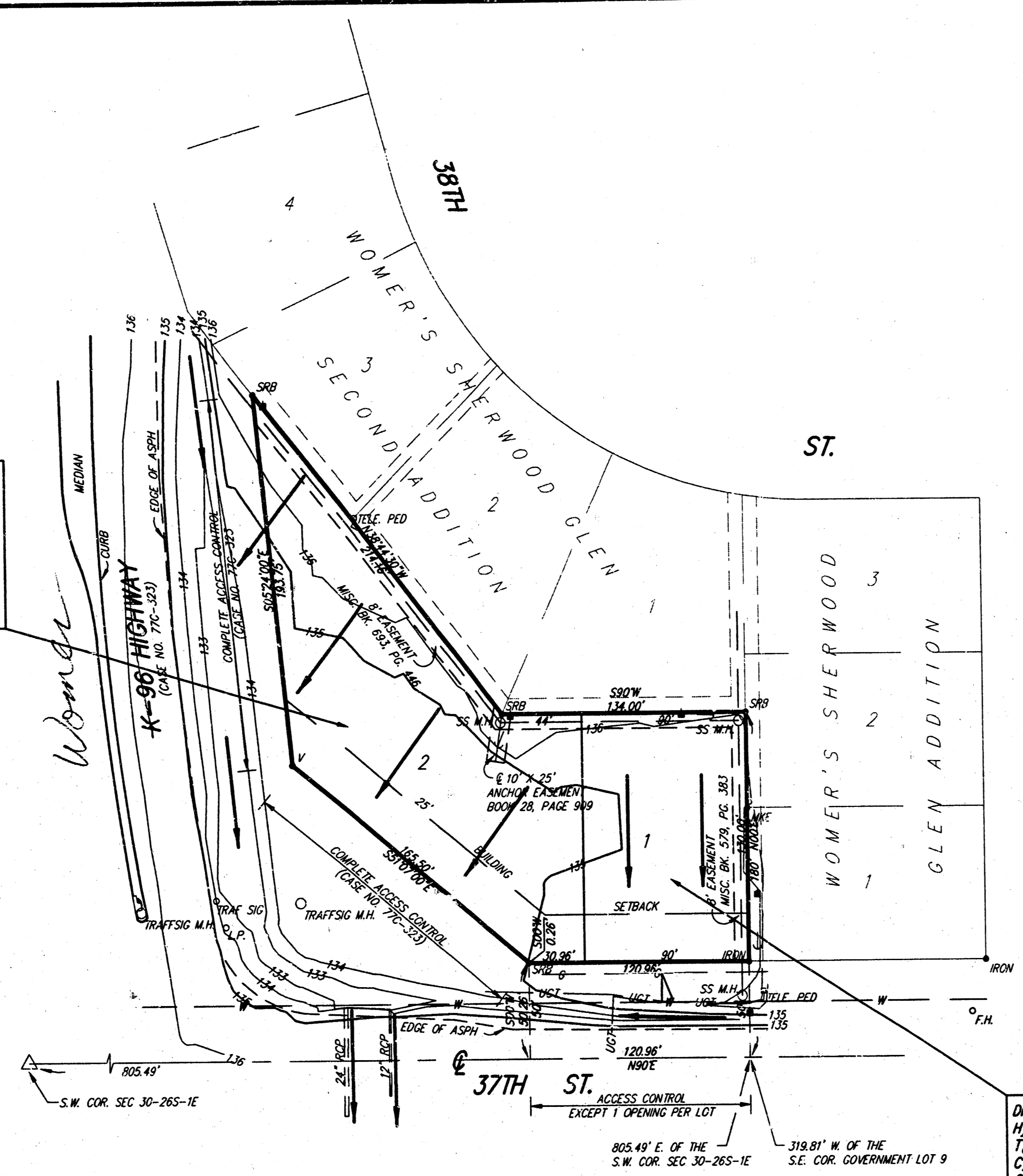


# DRAINAGE PLAN SEABURN ADDITION

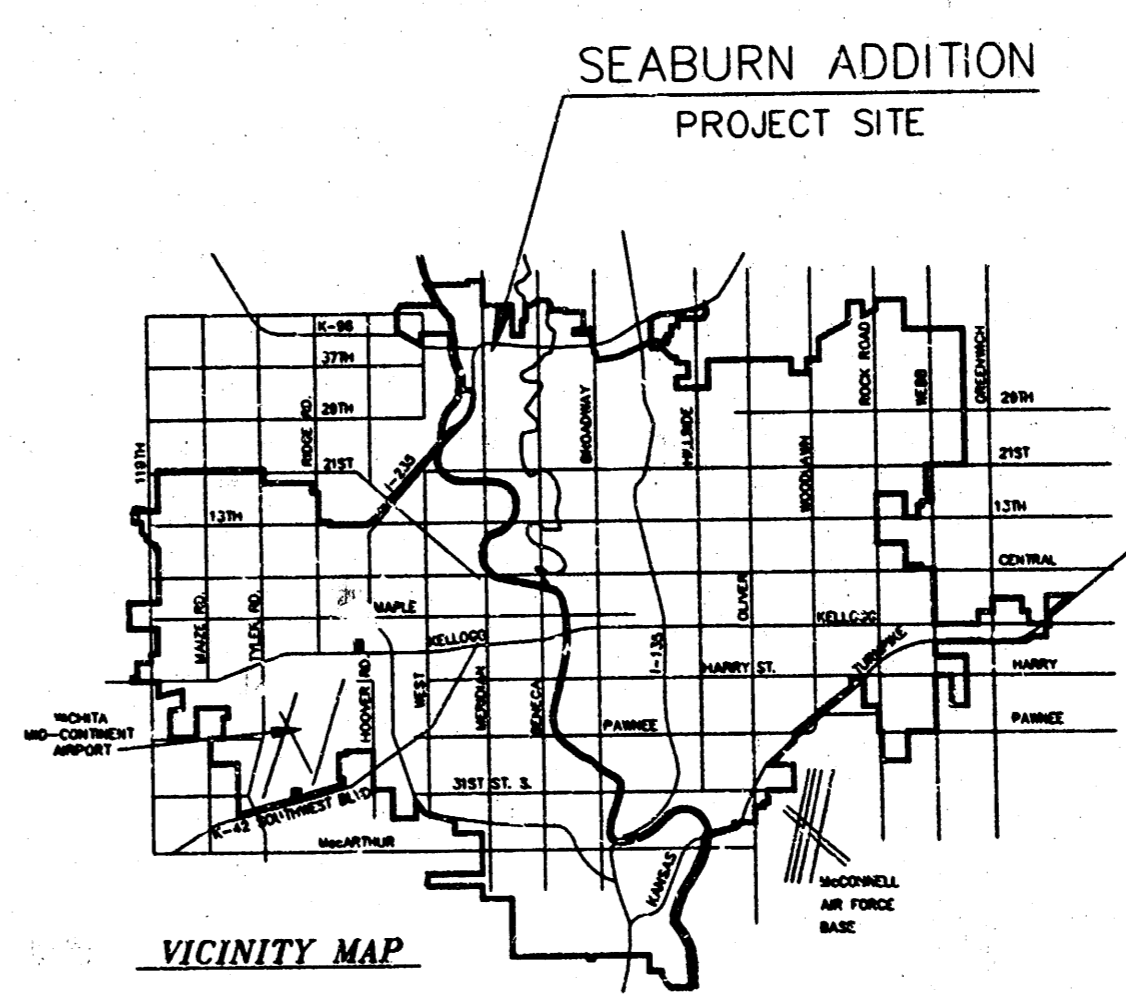
WICHITA, SEDGWICK COUNTY, KANSAS

Drainage Area = 0.55 Ac.  
Hydrologic Soil Type "D"  
 $T_p = 15$  min.  
 $C_p = 0.42$   
 $C_{10} = 0.72$   
 $I_p = 3.83$  in.  
 $I_{10} = 7.37$  in.  
 $Q_1 = 0.9$  cfs  
 $Q_{10} = 2.9$  cfs

Drainage Area = 0.27 Ac.  
Hydrologic Soil Type "D"  
 $T_p = 15$  min.  
 $C_p = 0.50$   
 $C_{10} = 0.76$   
 $I_p = 3.83$  in.  
 $I_{10} = 7.37$  in.  
 $Q_1 = 0.5$  cfs  
 $Q_{10} = 1.5$  cfs



BENCH MARK: City of Wichita Std Disc.  
N.E. Cor traffic signal light base  
N.W. Cor of intersection of Womer & 37th St.  
Elev.=136.68 (City Datum)



**SRB** 324 NORTH MAIN WICHITA, KANSAS 67203 316-264-8008 FAX 264-4621  
**SAVOY, RUGGLES & BOHM, P.A.**  
 ENGINEERING & SURVEYING Jan. 18, 1999

DWG FILE: Drainage Plan.dwg  
PROJECT NO.: 99-01227P