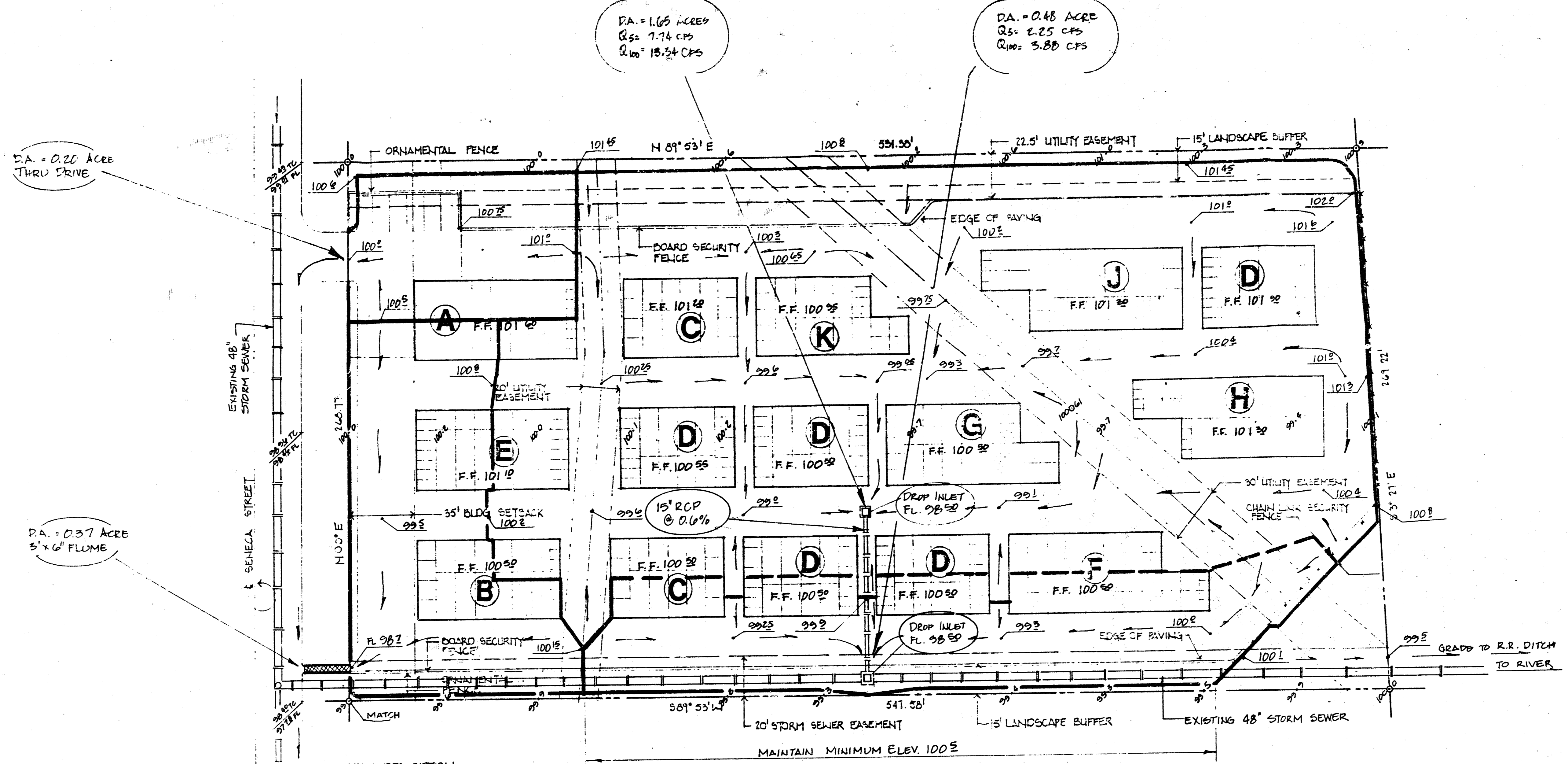


NOTE: PAVEMENT ELEVATION BETWEEN INLETS WILL ALLOW EQUALIZATION OF FLOW TO INLETS. PIPE SIZED FOR 1% TOTAL Qs = 9.0 CFS (15" RCP @ 0.6%)

EXCESS OF Q₁₀ ABOVE Q₅ WILL FLOW BOTH TO ABANDONED R.R. DITCH TO THE EAST, AND THRU FLUME TO SEVACA ST.



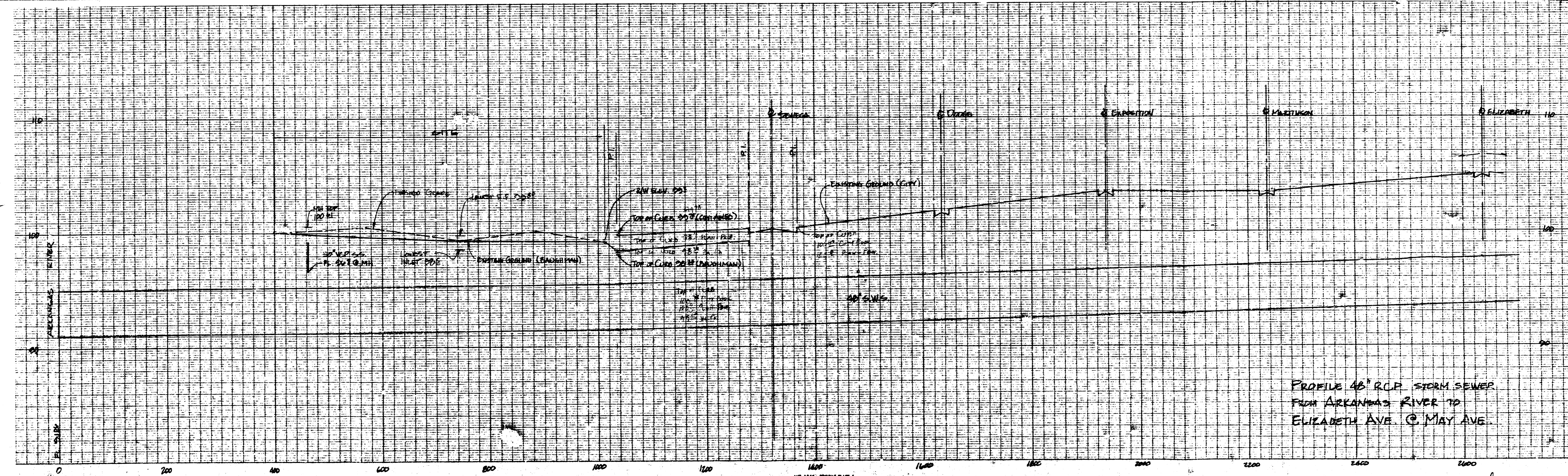
DRAINAGE PLAN

1"=20' 0"

Note: Assume Time of Conc. = 15 MIN.
C = 0.9
I_s = 5.21"/HR.
I₁₀₀ = 8.96"/HR.

SECURITY STORAGE PROPERTIES 2ND ADD.

BAUGHMAN COMPANY, P.A.
SURVEYING & ENGINEERING
316/263-7271 • 330 LAURA • WICHITA, KANSAS 67211



Security Storage Properties 2nd Add. 10/20/07