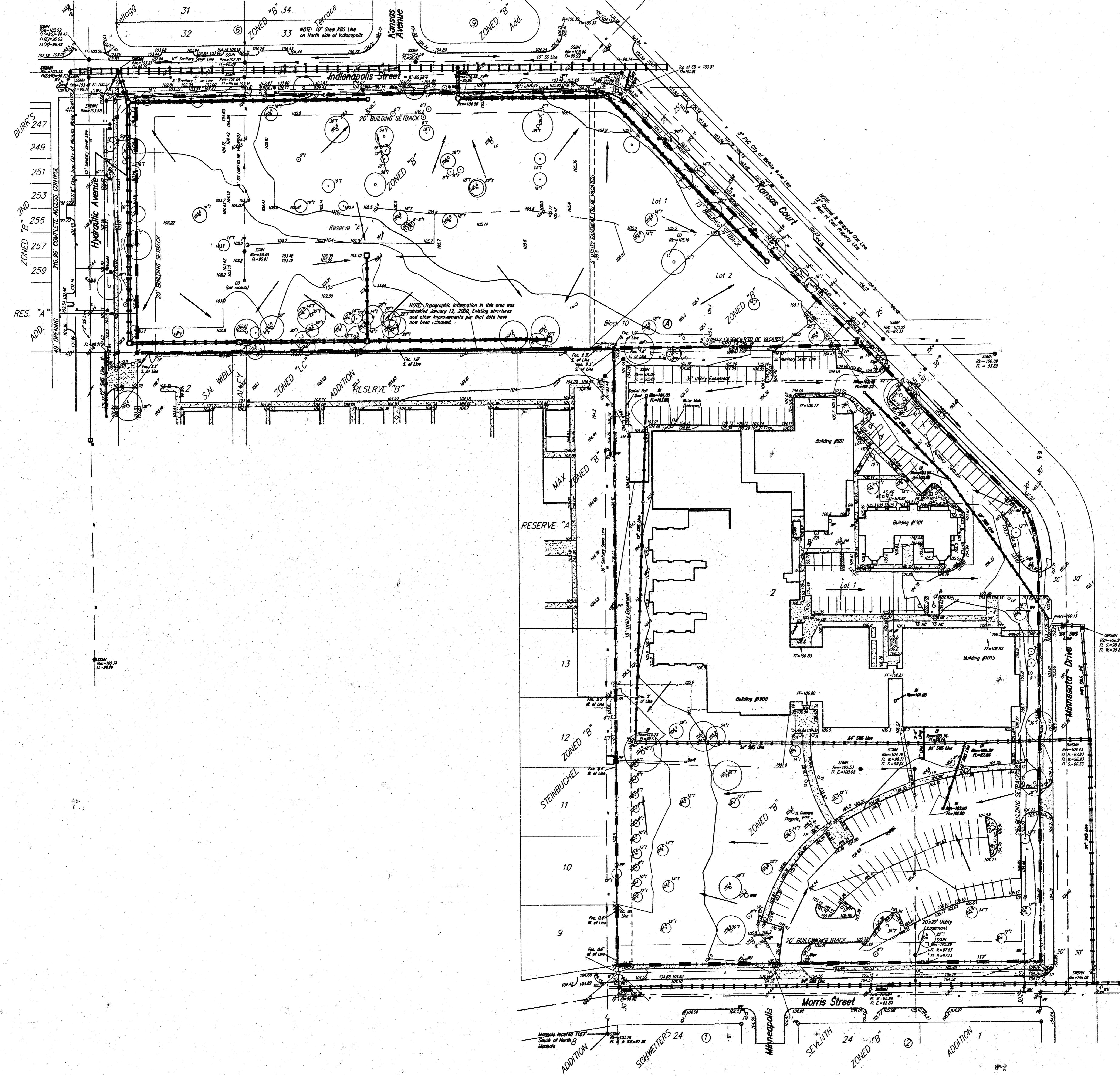


# DRAINAGE PLAN

## SEDGWICK COUNTY JUVENILE DETENTION CENTER

### AN ADDITION TO WICHITA, SEDGWICK COUNTY, KANSAS



DATE OF PREPARATION: JULY 11, 2003  
DATE OF TOPOGRAPHY: JULY 2, 2003  
CONTOUR INTERVALS = 1 FOOT

NOTE:  
ADDITIONAL BUILDING SETBACKS  
REQUIREMENTS PER PLD #1,  
ON FILE WITH THE CITY OF  
WICHITA.

BENCH MARK:  
City of Wichita Disc, Hydraulic and Orms,  
43 feet East of the center line of  
Hydraulic, 3.1 feet East of the east face of  
sidewalk, 5.9 feet North of the north line  
of concrete drive, 12.1 feet Southeast of  
center of parking lot light pole.  
Elevation = 105.54 (City Datum)

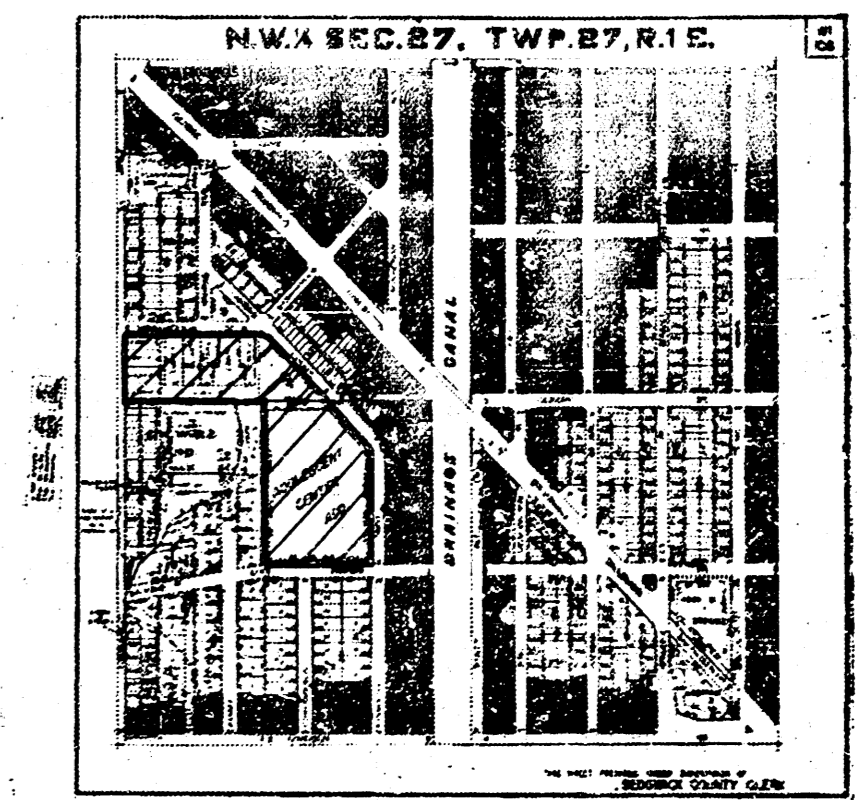
NOTE:  
A drainage plan has been developed for this  
subdivision and is on file with the City of Wichita,  
Kansas. Drainage intent shall remain as depicted or  
as modified with the approval of the City Engineer  
of the City of Wichita, Kansas. No obstructions  
which impede the flow of this drainage plan shall  
be allowed.

■ = #4 REBAR W/ "BAUGHMAN" CAP (FOUND)  
X = CHISELED CROSS (SET)  
○ = 1" IRON PIPE (FOUND)  
□ = IRON PIPE W/ TRIMBLE (FOUND)  
△ = 1/4" IRON PIPE (FOUND)  
● = 1/2" IRON PIPE (FOUND)

(C) = Calculated  
(P) = Flatted  
(T) = Tranted  
(M) = Measured

○ CO = Cleanout  
□ EB = Drop Inlet  
□ EM = Electric Meter  
● EH = Electric Hydrant  
○ FH = Fire Hydrant  
● GM = Gas Meter  
□ GU = Guard Post (Ballard)  
— GA = Guy Anchor  
● GV = Gas Valve  
○ LP = Light Pole  
□ PP = Power Pole  
△ Sign = Sign  
○ SS = Storm Sign  
● SSMH = Sanitary Sewer Manhole  
● SSMH = Southwestern Bell Manhole  
□ SWP = Southwestern Bell Pedestal  
□ SSMH = Stormwater Sewer Manhole  
○ Well = Cased Well  
○ WM = Water Meter  
○ WLV = Water Valve  
□ XTRM = Transformer  
○ TL = Tard Light

Note: Existing drainage patterns will not be altered on Lot 2. Existing conditions equal proposed conditions. Proposed stormwater sewer alignment has been shown for Lot 1. Stormwater sewer will be installed by Private Project. Pipe sizing will be performed by the design engineer for the project.



VICINITY MAP