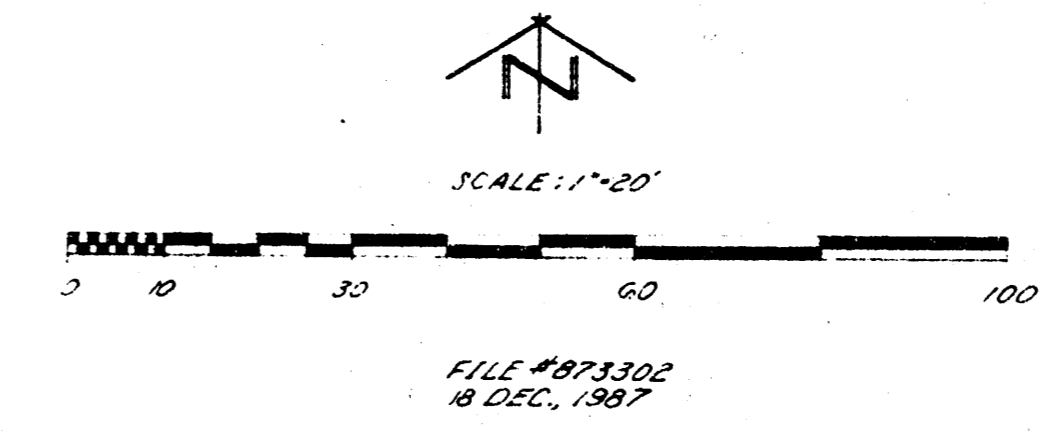
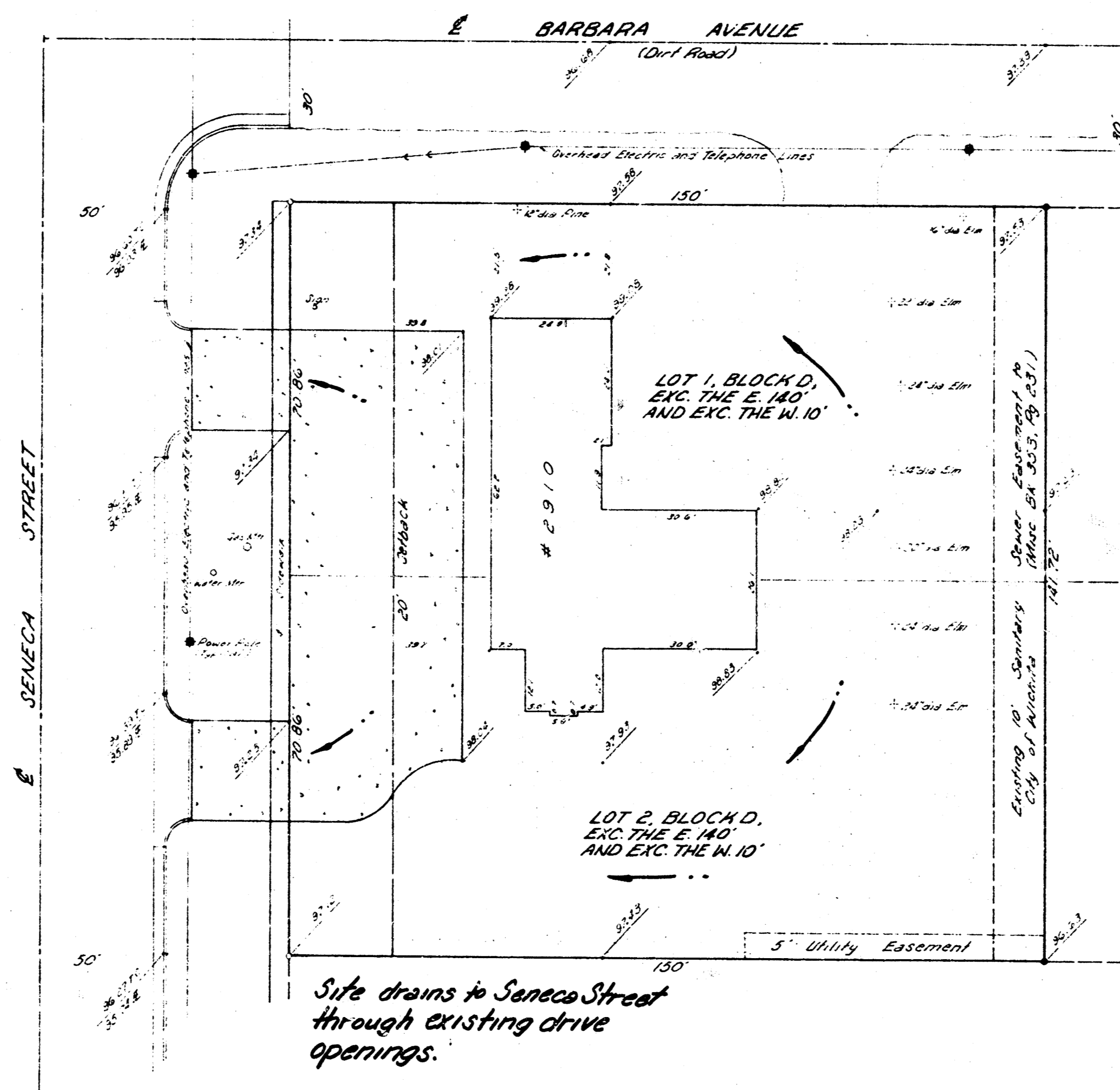
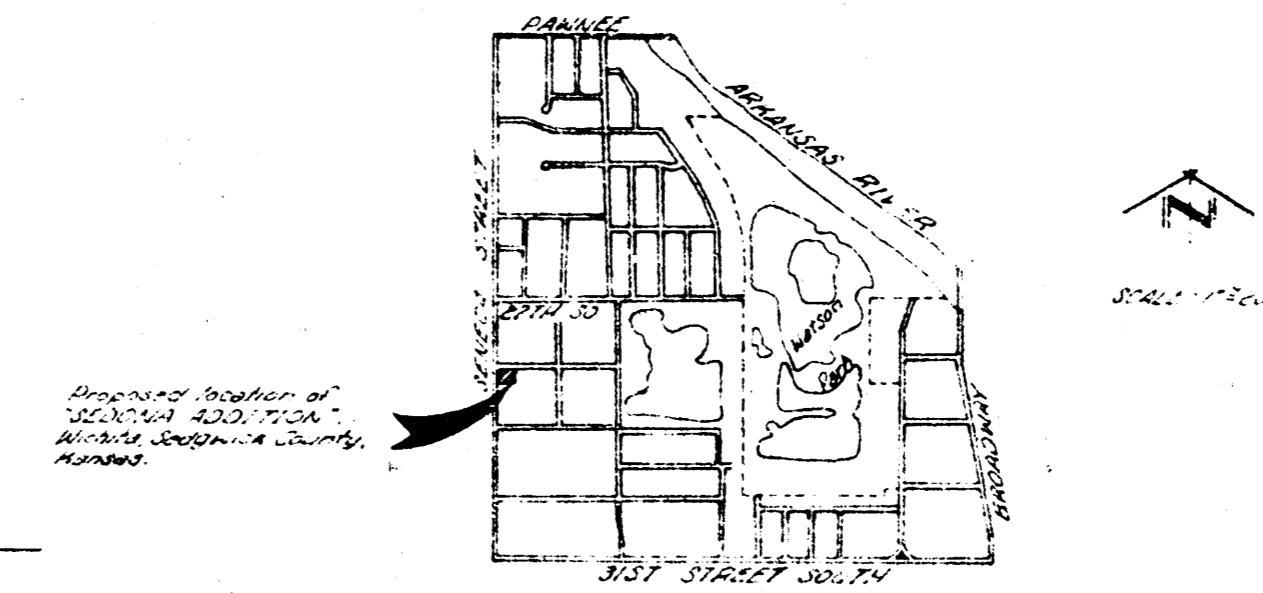


SEDONA
(Drainage)

DRAINAGE CONCEPT AND
LOCATION SKETCH FOR PROPOSED
"SEDONA ADDITION".
WICHITA, SEDGWICK COUNTY, KANSAS

VICINITY MAP

PART OF SEC. 5,
T26N, R12E



GENERAL NOTES:
An 8" VSD Sanitary Sewer Line lies in the easement provided along the rear of Subject property.
A 12" Gas Line lies in the West right-of-way of Seneca Street.
Water Lines are in place approximately 5' South of the South curb of Barbara - 2.5" Cast Iron (1981).
BENCH MARK used for spot elevations was rim of Sanitary Sewer manhole at the rear of Lot 4, Block D, "LA BROWN ADDITION" - Elev. 36.50 City Datum.

OWNERS:
Dorothy L. Harter, 245 West Dewey, Wichita, Kansas 67207
Betty Jo Harter, P.O. Box 192, Sedona, Arizona 86336

TERRA TECH LAND SURVEYING INC. 245 West Dewey, Wichita, Kansas 67208-3607, 316-267-0744 / 267-3348