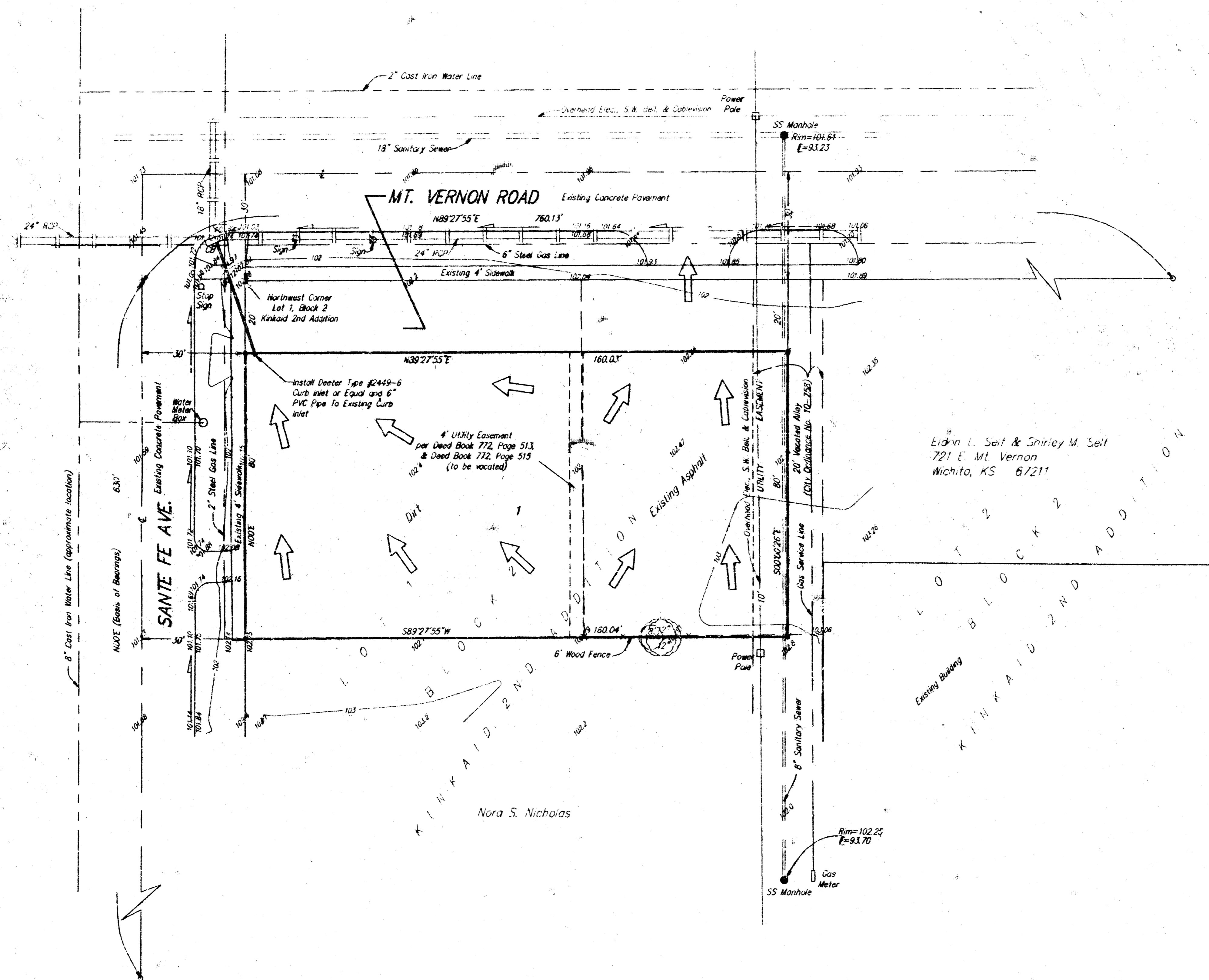


DRAINAGE PLAN
SELF'S ADDITION
WICHITA, SEDGWICK COUNTY, KANSAS



- = #4 Rebar with Baughman Cap (Set)
- = PK Nail (Set)
- o = Thimble

CONTOURS @ 1' INTERVALS

- LEGEND**
- - Power Pole
 - - Sanitary Sewer Manhole
 - - Gas Meter
 - ⊠ - Traffic Signs
 - - Water Meter Box
 - ⊞ - Catch Basin
 - - Storm Water Sewer

LEGAL

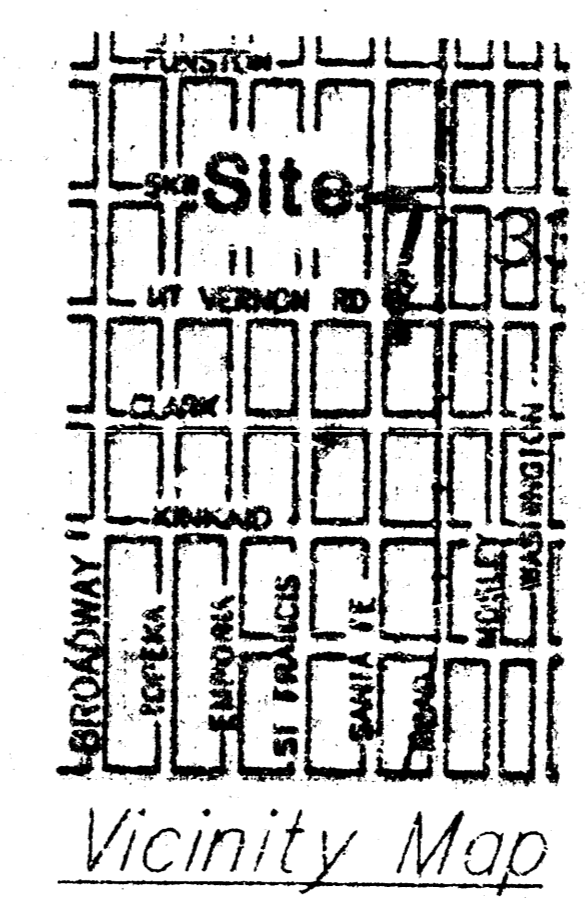
A replat of the north 100 feet of Lot 1, Block 2, and the west half of the adjacent vacated alley, Kinkaid 2nd Addition to Wichita, Kansas.

BENCHMARK

Brass rod in concrete post, 34.5' East and 21' north of intersection of centerlines of Washington Avenue and Mt. Vernon Road. Elevation = 100.45

OWNER

Eldon & Shirley M. Self
 721 East Mt. Vernon
 Wichita, Kansas 67211
 (316) 267-0500 Ext. 105



DRAINAGE AREA = 0.3
C = 0.9
Q₅ = 1.2 cfs
Q₁₀₀ = 2.0 cfs