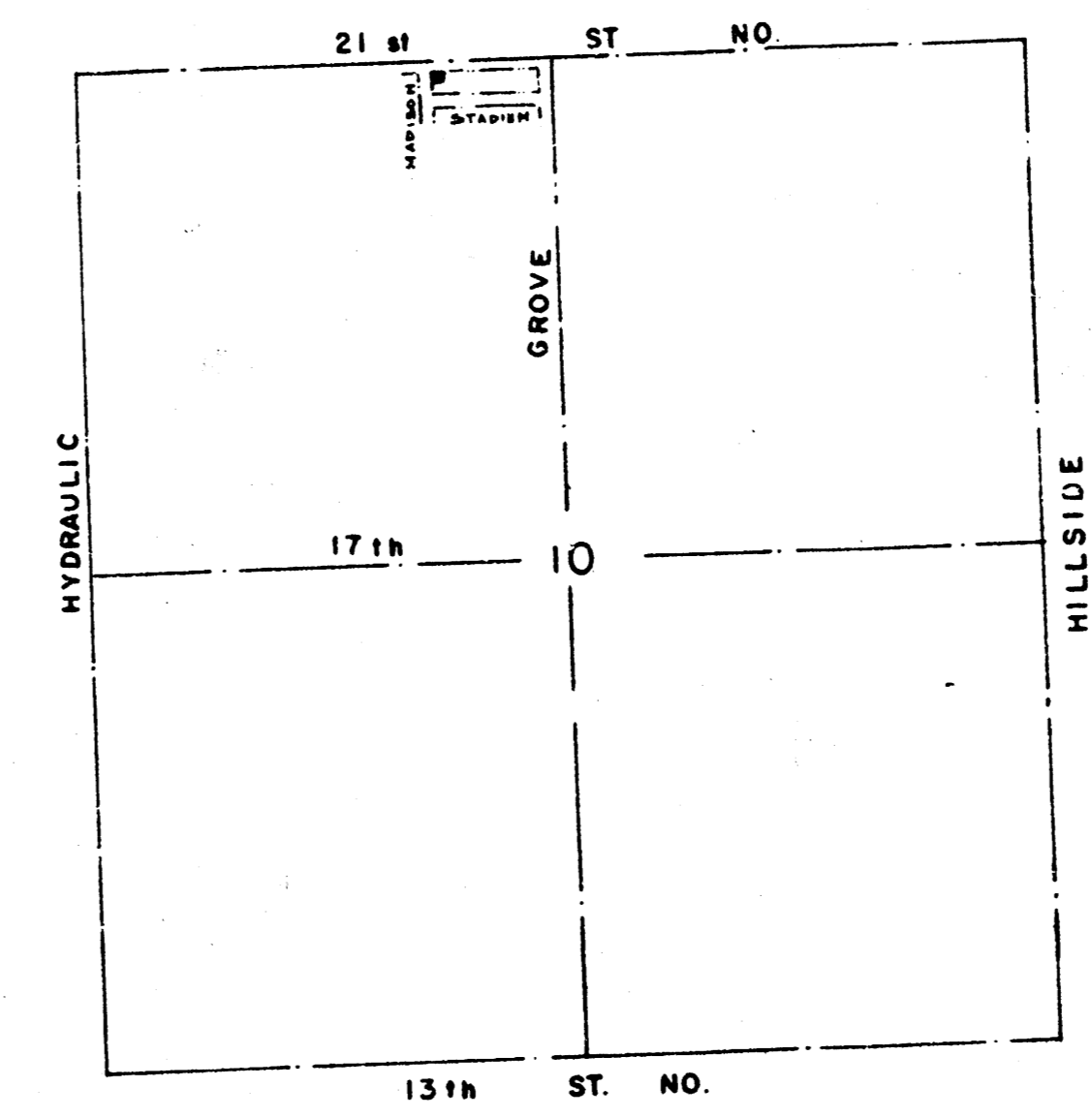
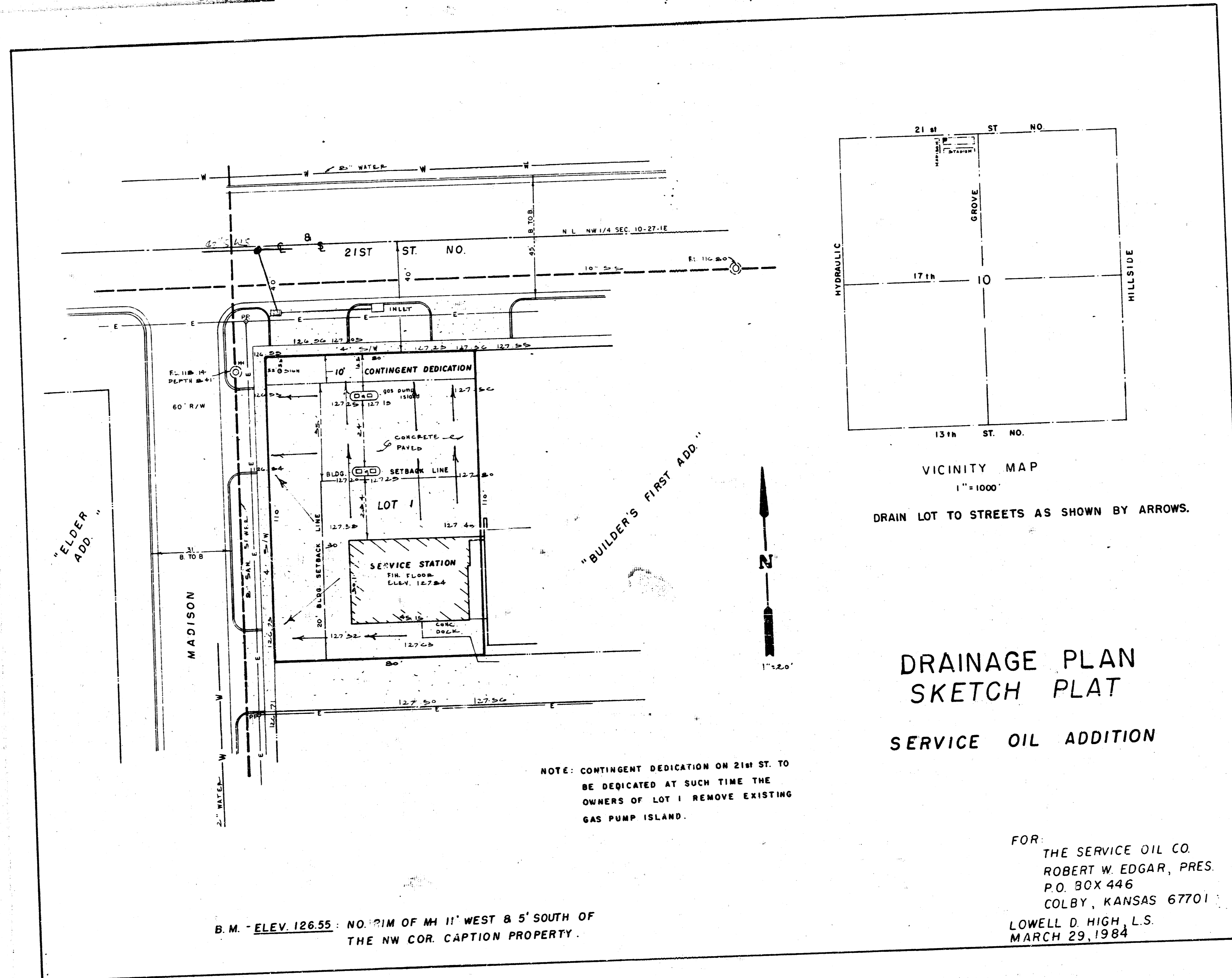


SERVICE OIL ADDITION
(Drainage)



VICINITY MAP
1" = 1000'

DRAIN LOT TO STREETS AS SHOWN BY ARROWS.

**DRAINAGE PLAN
SKETCH PLAT
SERVICE OIL ADDITION**

NOTE: CONTINGENT DEDICATION ON 21ST ST. TO BE DEDICATED AT SUCH TIME THE OWNERS OF LOT 1 REMOVE EXISTING GAS PUMP ISLAND.

FOR:
THE SERVICE OIL CO.
ROBERT W. EDGAR, PRES.
P.O. BOX 446
COLBY, KANSAS 67701
LOWELL D. HIGH, L.S.
MARCH 29, 1984

B.M. ELEV. 126.55: NO. 21M OF MH 11' WEST 8' SOUTH OF THE NW COR. CAPTION PROPERTY.