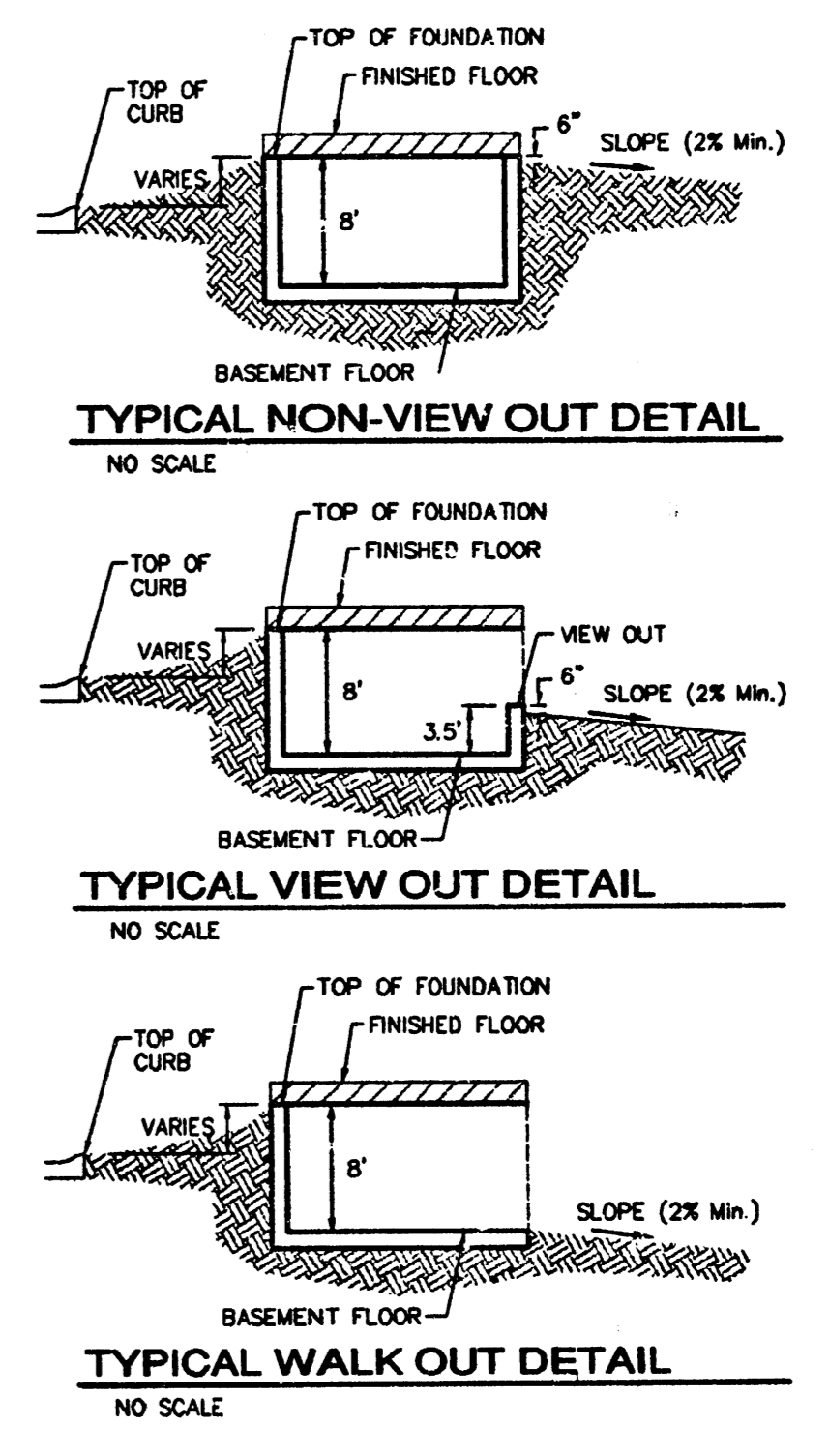


**BENCHMARKS:**  
 RR Spike in N. Face of PP in N. R/W of Maple N. of Ninetron. Elev. = 177.01 (City Datum)  
 "C" Out center of north Headwall of RCBC in N. R/W of Maple 570' East of centerline of City View. Elev. = 187.91 (City Datum)

Scale: 1" = 60'



- NOTES:**
- PROPOSED TOP OF FOUNDATION ELEVATIONS ARE SHOWN ON PLANS. CONTRACTOR TO SET FINISHED FLOOR AND GARAGE FLOOR ELEVATIONS. ALL STREET ELEVATIONS SHOWN ON PLANS ARE FOR TOP OF CURB (FULL-HEIGHT).
  - THIS GRADING PLAN IS DESIGNED WITH VIEW-OUTS AND WALK-OUTS. ELEVATIONS SHOWN AS XX.X V.O. DEPICT VIEW-OUT STRUCTURES. ELEVATIONS SHOWN AS XX.X W.O. DEPICT WALK-OUT STRUCTURES.
  - ALL LOTS SHALL MEET MINIMUM PAD REQUIREMENT AS SHOWN ON THE RECORDED PLAT.
- | MINIMUM BUILDING PAD ELEVATIONS FOR LOWEST OPENING TO THE STRUCTURES |       |           |          |
|--|-------|-----------|----------|
| LOT  | BLOCK | ELEVATION |          |
| 1-24   | D     | 177.20    | 1,364.60 |
| 1-7  | E     | 160.50    | 1,347.90 |
- LOT DIMENSIONS HAVE BEEN OMITTED ON THIS PLAN. REFER TO THE RECORDED PLAT FOR FINAL DIMENSION, EASEMENT, & BUILDING SETBACK INFORMATION.
  - HOUSE PAD ELEVATIONS DEPICTED WITH BOLD OUTLINES WITH TOP OF FOUNDATIONS SHOWN AS XX.X V.O. INDICATE THAT DEEP FOOTINGS OR DEEP FOUNDATIONS MAY BE REQUIRED.
  - A DRAINAGE PLAN HAS BEEN DEVELOPED FOR THIS SUBDIVISION AND IS ON FILE WITH THE CITY OF WICHITA, KANSAS. DRAINAGE INTENT SHALL REMAIN AS DEPICTED OR AS MODIFIED WITH THE APPROVAL OF THE CITY ENGINEER OF THE CITY OF WICHITA, KANSAS. NO OBSTRUCTIONS WHICH IMPEDE THE FLOW OF THIS DRAINAGE PLAN SHALL BE ALLOWED.
  - ALL ELEVATIONS SHOWN ARE CITY OF WICHITA DATUM.

**APPROVED DRAINAGE PLAN**

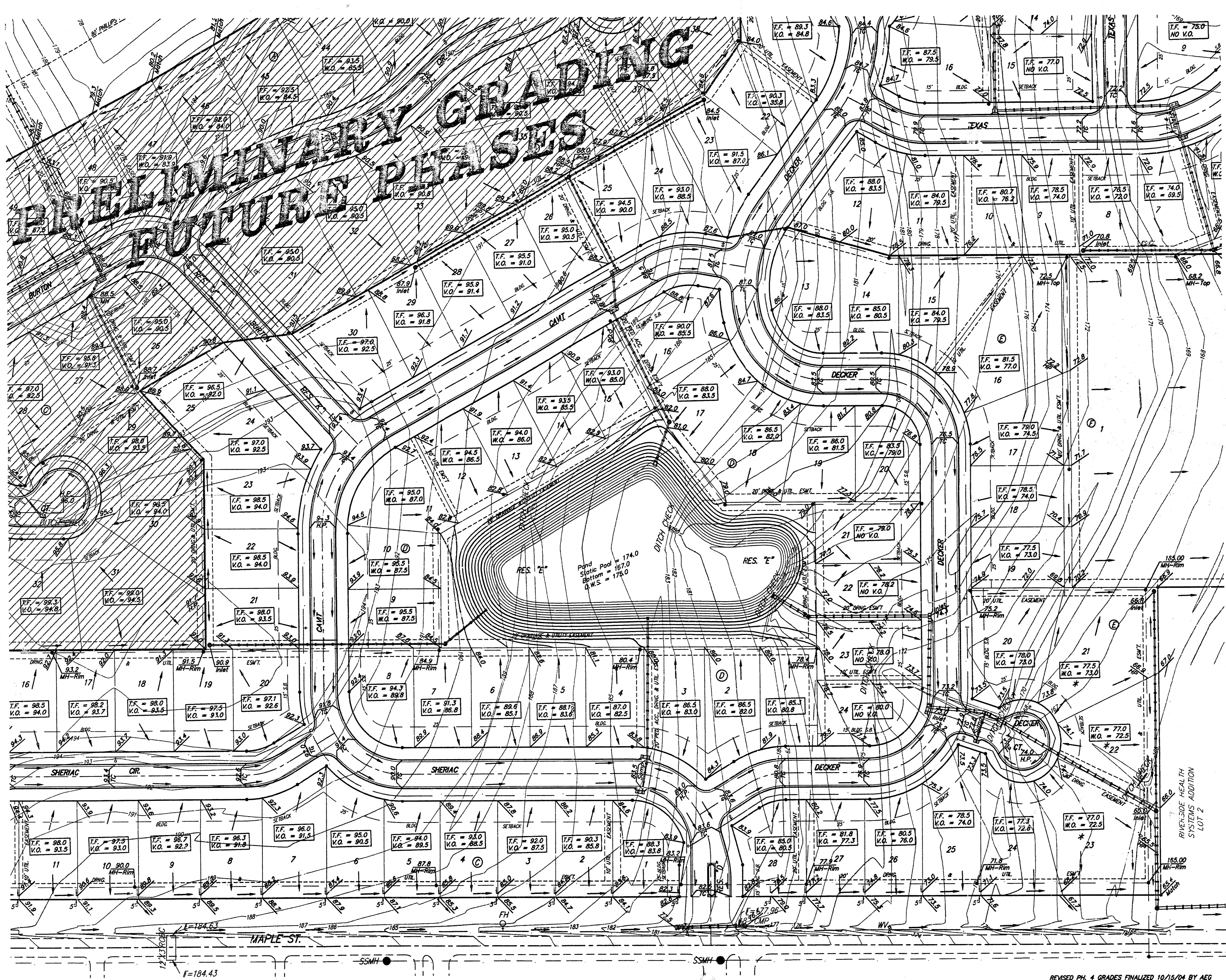
SHADOW WOODS ADDITION  
**MASTER GRADING PLAN**  
 WICHITA, KANSAS

**BAUGHMAN COMPANY P.A.**  
 ENGINEERING, SURVEYING, & PLANNING  
 318-262-7271 • 315 ELLIS • WICHITA, KANSAS 67211

DESIGN	DRAWN	APPROVED	DATE	SCALE
	SCL		03/13/03	NOTE

PROJECT NUMBER: \_\_\_\_\_ SHEET: **1** OF **4**

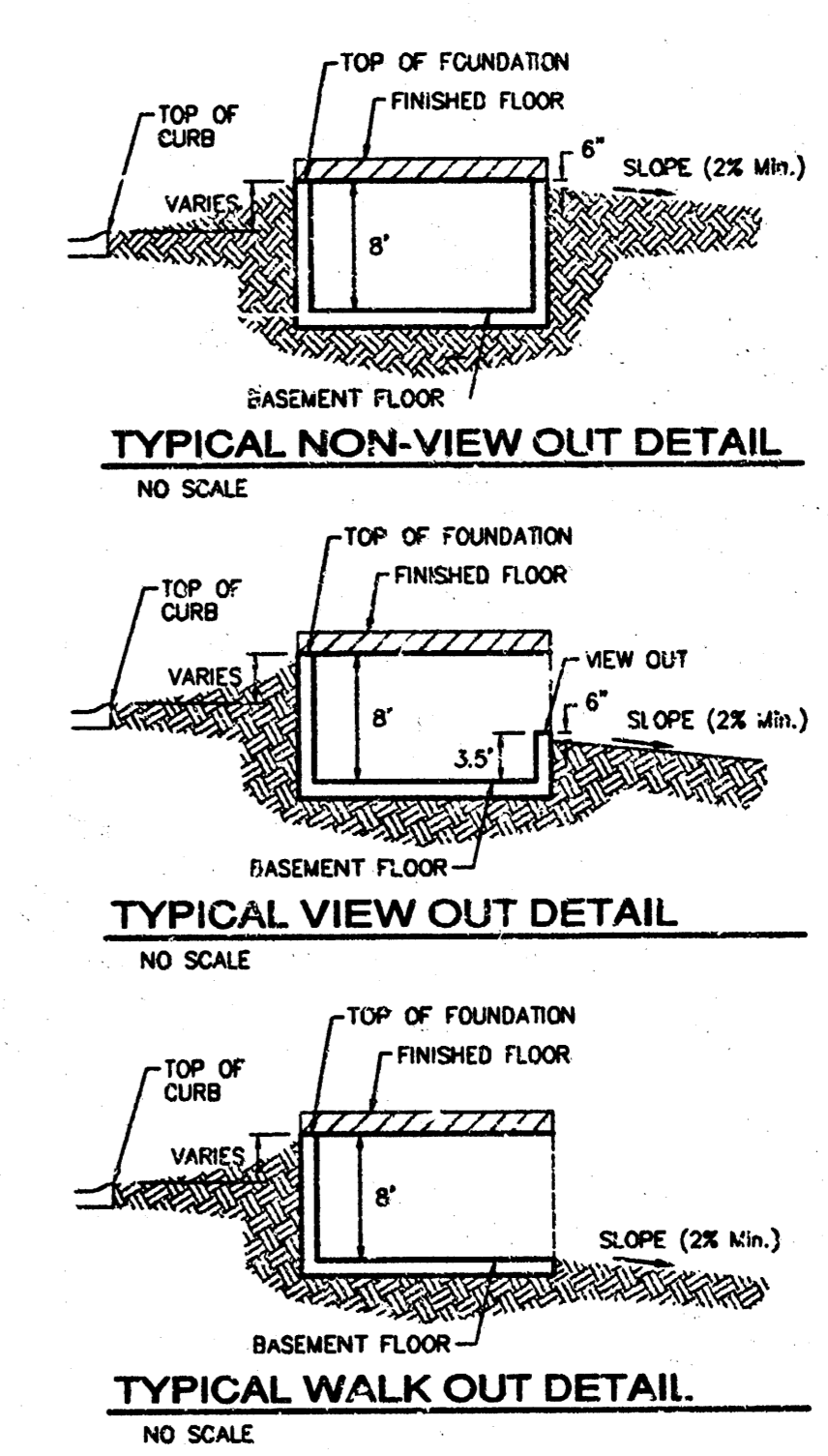
REVISED PH. 4 GRADES FINALIZED 10/15/04 BY AEG  
 REVISED PH. 1 GRADES 10/9/03 BY ASG PER NBW  
 REVISED NORTH P.L. & ESM'T GRADES 7/15/03 BY SMD PER AEG  
 REVISED PH. 2 GRADES FINALIZED 12/14/04 BY AEG  
 REVISED SOUTH R/W GRADES 6/25/03 BY AEG



**BENCHMARKS:**  
 RR Spike in N. Face of PP in N.  
 R/W of Maple N. of Ninear.  
 Elev. = 177.01 (City Datum)

"□" Cut center of north Headwall  
 of R/CBC in N. R/W of Maple 570'  
 East of centerline of City View.  
 Elev. = 187.91 (City Datum)

Scale: 1" = 60'



- NOTES:**
1. PROPOSED TOP OF FOUNDATION ELEVATIONS ARE SHOWN ON PLANS. CONTRACTOR TO SET FINISHED FLOOR AND GARAGE FLOOR ELEVATIONS. ALL STREET ELEVATIONS SHOWN ON PLANS ARE FOR TOP OF CURB (FULL-HEIGHT).
  2. THIS GRADING PLAN IS DESIGNED WITH VIEW-OUTS AND WALK-OUTS. ELEVATIONS SHOWN AS XXX.X V.O. DEPICT VIEW-OUT STRUCTURES. ELEVATIONS SHOWN AS XXX.X V.O. DEPICT WALK-OUT STRUCTURES.
  3. ALL LOTS SHALL MEET MINIMUM PAD REQUIREMENT AS SHOWN ON THE RECORDED PLAT.

MINIMUM BUILDING PAD ELEVATIONS FOR LOWEST OPENING TO THE STRUCTURES			
LOT	BLOCK	CITY DATUM	ELEVATION
1-24	D	177.20	1364.60
1-7	E	160.50	1347.90

4. LOT DIMENSIONS HAVE BEEN OMITTED ON THIS PLAN. REFER TO THE RECORDED PLAT FOR FINAL DIMENSION, EASEMENT, & BUILDING SETBACK INFORMATION.
5. USE PAD ELEVATIONS DEPICTED WITH BOLD XXX.X'S WITH TOP OF FOUNDATIONS SHOWN AS XXX.X V.O. INDICATE THAT DEEP FOOTINGS OR DEEP FOUNDATIONS MAY BE REQUIRED.
6. A DRAINAGE PLAN HAS BEEN DEVELOPED FOR THIS SUBDIVISION AND IS ON FILE WITH THE CITY OF WICHITA, KANSAS. DRAINAGE INTENT SHALL REMAIN AS DEPICTED OR AS MODIFIED WITH THE APPROVAL OF THE CITY ENGINEER OF THE CITY OF WICHITA, KANSAS. NO OBSTRUCTIONS WHICH IMPEDE THE FLOW OF THIS DRAINAGE PLAN SHALL BE ALLOWED.
7. ALL ELEVATIONS SHOWN ARE CITY OF WICHITA DATUM.

**SHADOW WOODS ADDITION**  
**MASTER GRADING PLAN**  
 WICHITA, KANSAS

**BAUGHMAN COMPANY P.A.**  
 ENGINEERING, SURVEYING, & PLANNING

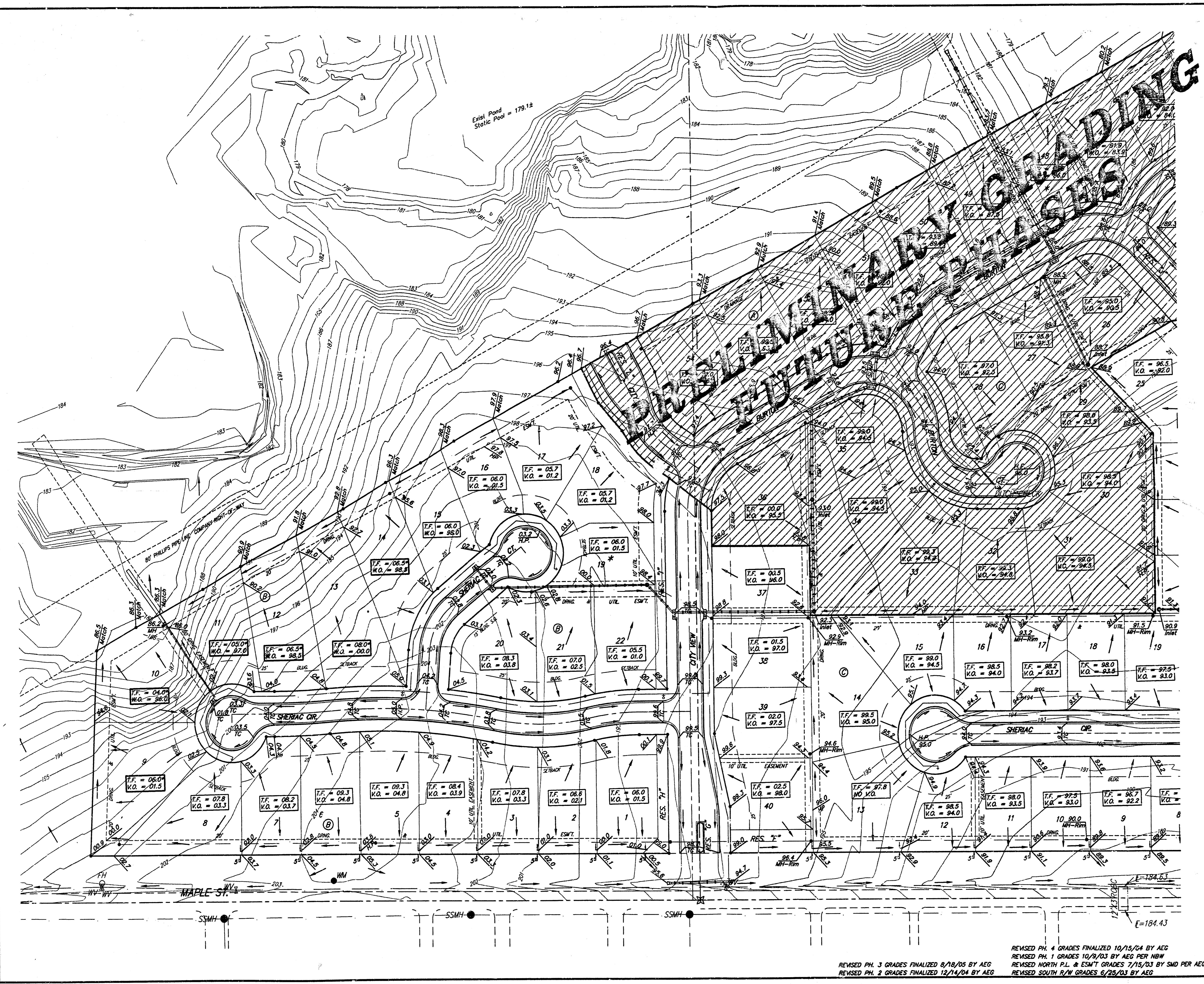
315-282-7271 • 315 ILLUS • WICHITA, KANSAS 67211

PROJECT NUMBER

DESIGN	DRAWN	APPROVED	DATE	SCALE
	SCL		03/13/03	NOTE

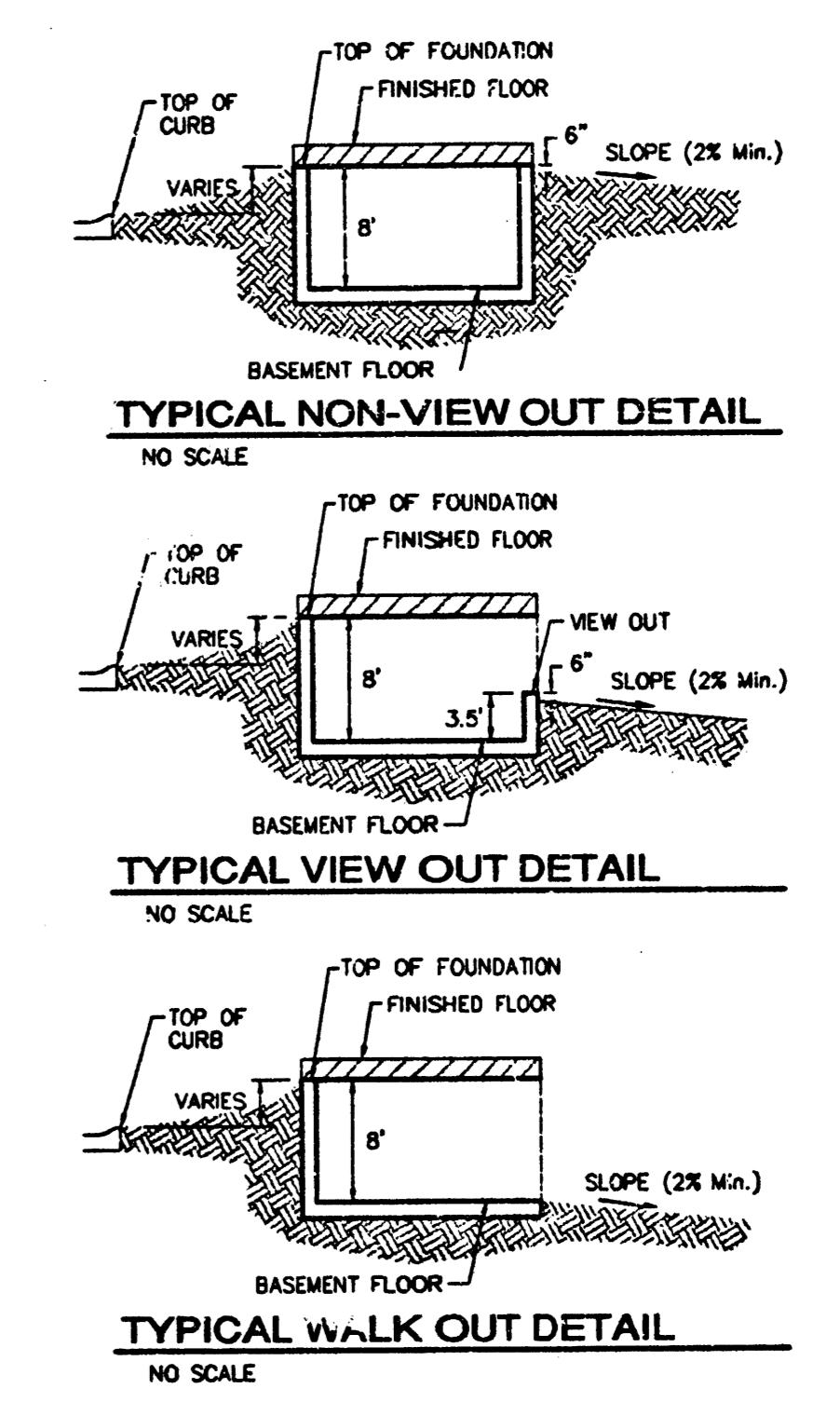
SHEET **2** OF **4**

REVISED PH. 4 GRADES FINALIZED 10/15/04 BY AEG  
 REVISED PH. 1 GRADES 10/9/03 BY AEG PH. NW  
 REVISED NORTH P.L. & ESM'T GRADES 7/15/03 BY SMO PER AEG  
 REVISED PH. 2 GRADES FINALIZED 12/14/04 BY AEG  
 REVISED SOUTH R/W GRADES 6/25/03 BY AEG



**BENCHMARKS:**  
 RR Spike in N. Face of PP in N. R/W of Maple St. of N. View. Elev. = 177.01 (City Datum)  
 "C" Cut center of north Headwall of RCBC in N. R/W of Maple St. of East of centerline of City View. Elev. = 187.91 (City Datum)

Scale: 1" = 60'



- NOTES:**
1. PROPOSED TOP OF FOUNDATION ELEVATIONS ARE SHOWN ON PLANS. CONTRACTOR TO SET FINISHED FLOOR AND GARAGE FLOOR ELEVATIONS. ALL STREET ELEVATIONS SHOWN ON PLANS ARE FOR TOP OF CURB (FULL-HEIGHT).
  2. THIS GRADING PLAN IS DESIGNED WITH VIEW-OUTS AND WALK-OUTS. ELEVATIONS SHOWN AS XX.X V.O. DEPICT VIEW-OUT STRUCTURES. ELEVATIONS SHOWN AS XX.X W.O. DEPICT WALK-OUT STRUCTURES.
  3. ALL LOTS SHALL MEET MINIMUM F-AD REQUIREMENT AS SHOWN ON THE RECORDED PLAT.

MINIMUM BUILDING PAD ELEVATIONS FOR LOWEST OPENING TO THE STRUCTURES			
LOT	BLOCK	ELEVATION	
		CITY DATUM	NGVD29
1-24	D	177.20	1364.60
1-7	E	180.50	1347.90

4. LOT DIMENSIONS HAVE BEEN OMITTED ON THIS PLAN. REFER TO THE RECORDED PLAT FOR FINAL DIMENSION, EASEMENT, & BUILDING SETBACK INFORMATION.
5. HOUSE PAD ELEVATIONS DEPICTED WITH BOLD OUTLINES WITH TOP OF FOUNDATIONS SHOWN AS XX.X T.F.\* INDICATE THAT DEEP FOOTINGS OR DEEP FOUNDATIONS MAY BE REQUIRED.
6. A DRAINAGE PLAN HAS BEEN DEVELOPED FOR THIS SUBDIVISION AND IS ON FILE WITH THE CITY OF WICHITA, KANSAS. DRAINAGE INTENT SHALL REMAIN AS DEPICTED OR AS MODIFIED WITH THE APPROVAL OF THE CITY ENGINEER OF THE CITY OF WICHITA, KANSAS. NO OBSTRUCTIONS WHICH IMPEDE THE FLOW OF THIS DRAINAGE PLAN SHALL BE ALLOWED.
7. ALL ELEVATIONS SHOWN ARE CITY OF WICHITA DATUM.

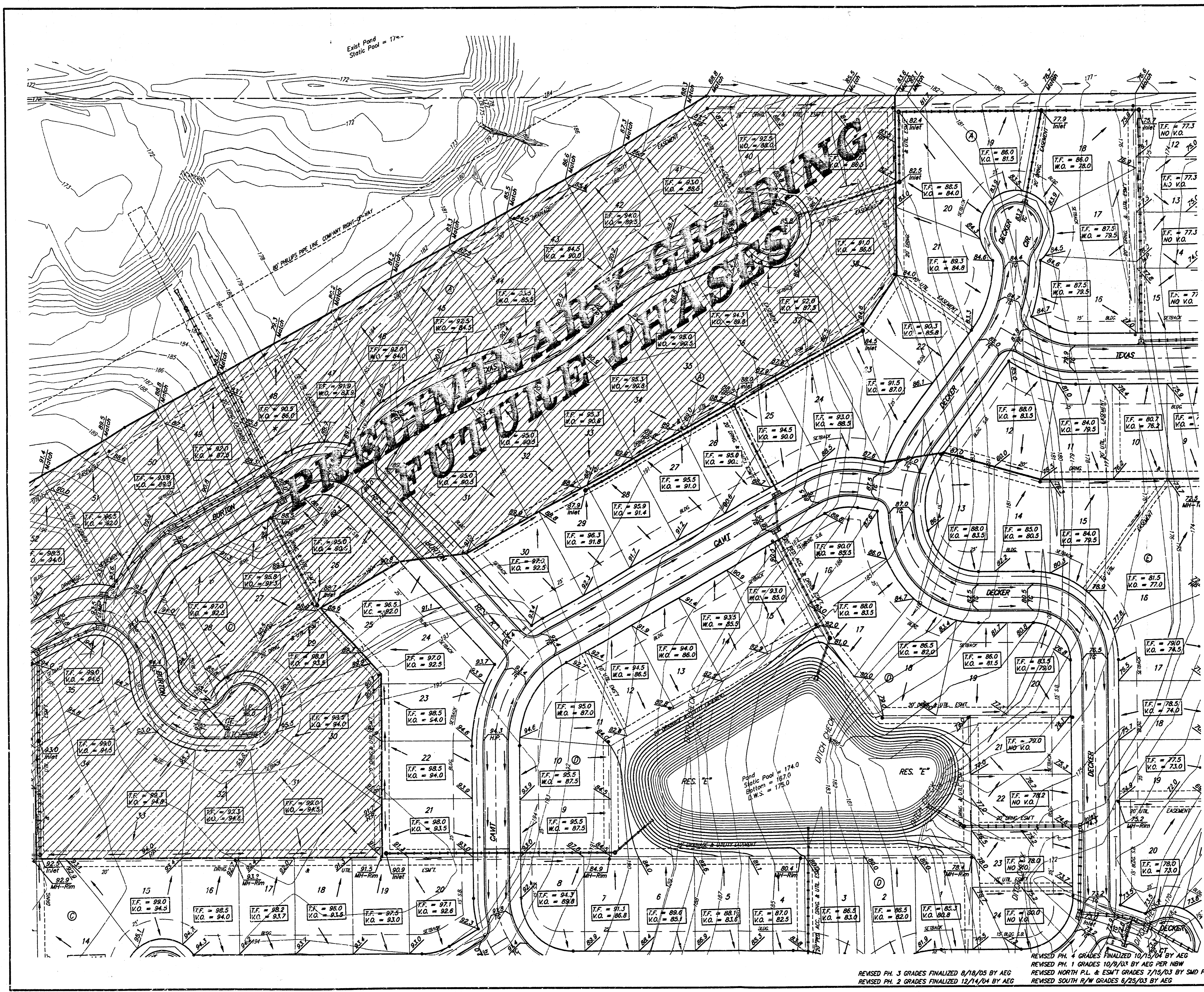
**SHADOW WOODS ADDITION**  
**MASTER GRADING PLAN**  
 WICHITA, KANSAS

**BAUGHMAN COMPANY P.A.**  
 ENGINEERING, SURVEYING, & PLANNING  
 316-282-7271 • 316 ELLIS • WICHITA, KANSAS 67211

PROJECT NUMBER: \_\_\_\_\_ SHEET **3** OF **4**

DESIGN: \_\_\_\_\_ DRAWN: SCL APPROVED: \_\_\_\_\_ DATE: 02/13/03 SCALE: \_\_\_\_\_ NOTE: \_\_\_\_\_

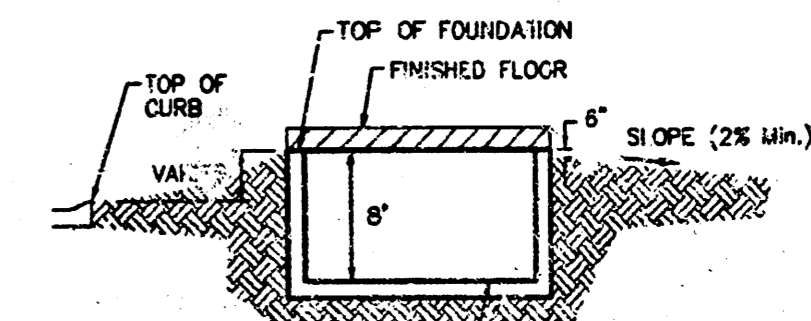
REVISED PH. 4 GRADES FINALIZED 10/15/04 BY AEG  
 REVISED PH. 1 GRADES 10/9/03 BY AEG PER NBW  
 REVISED NORTH P.L. & ESMT GRADES 7/15/03 BY SMD PER AEG  
 REVISED PH. 2 GRADES FINALIZED 12/14/04 BY AEG  
 REVISED SOUTH R/W GRADES 6/29/03 BY AEG



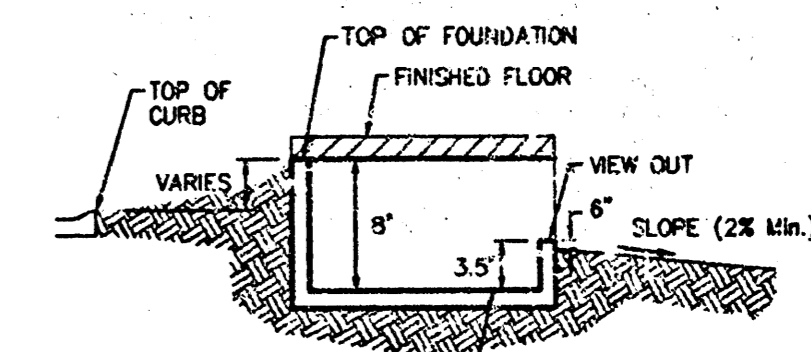
**BENCHMARKS:**  
 RR Spike in N. Face of PP in N. R/W of Maple N. of Nineiron. Elev. = 177.01 (City Datum)

\* Cut center of north Headwall of RCB in N. R/W of Maple 570' East of centerline of City View. Elev. = 187.91 (City Datum)

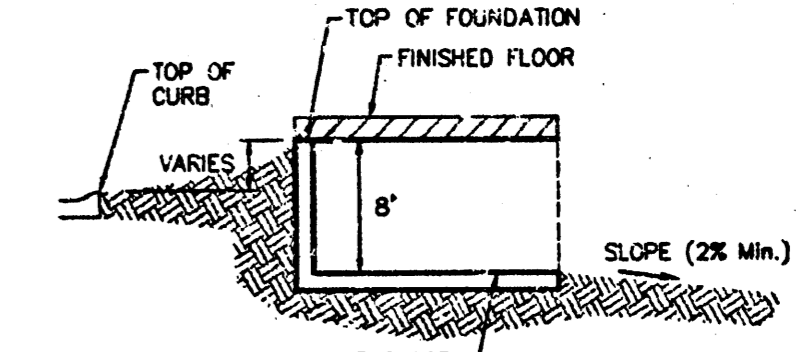
Scale: 1" = 60'



TYPICAL NON-VIEW OUT DETAIL  
NO SCALE



TYPICAL VIEW OUT DETAIL  
NO SCALE



TYPICAL WALK OUT DETAIL  
NO SCALE

**NOTES:**

1. PROPOSED TOP OF FOUNDATION ELEVATIONS ARE SHOWN ON PLANS. CONTRACTOR TO SET FINISHED FLOOR AND GARAGE FLOOR ELEVATIONS. ALL STREET ELEVATIONS SHOWN ON PLANS ARE FOR TOP OF CURB (FULL-HEIGHT).
2. THIS GRADING PLAN IS DESIGNED WITH VIEW-OUTS AND WALK-OUTS. ELEVATIONS SHOWN AS XX.X V.O. DEPICT VIEW-OUT STRUCTURES. ELEVATIONS SHOWN AS XX.X V.O. DEPICT WALK-OUT STRUCTURES.
3. ALL LOTS SHALL MEET MINIMUM PAD REQUIREMENT AS SHOWN ON THE RECORDED PLAT.

MINIMUM BUILDING PAD ELEVATIONS FOR LOWEST OPENING TO THE STRUCTURES			
LOT	BLOCK	ELEVATION	
		CITY DATUM	NGVD29
1-24	D	177.20	1364.60
1-7	E	160.50	1347.80

4. LOT DIMENSIONS HAVE BEEN OMITTED ON THIS PLAN. REFER TO THE RECORDED PLAT FOR FINAL DIMENSION, EASEMENT, & BUILDING SETBACK INFORMATION.
5. HOUSE PAD ELEVATIONS DEPICTED WITH BOLD OUTLINES WITH TOP OF FOUNDATIONS SHOWN AS XX.X T.F. \* INDICATE THAT DEEP FOOTINGS OR DEEP FOUNDATIONS MAY BE REQUIRED.
6. A DRAINAGE PLAN HAS BEEN DEVELOPED FOR THIS SUBDIVISION AND IS ON FILE WITH THE CITY OF WICHITA, KANSAS. DRAINAGE INTENT SHALL REMAIN AS DEPICTED OR AS MODIFIED WITH THE APPROVAL OF THE CITY ENGINEER OF THE CITY OF WICHITA, KANSAS. NO OBSTRUCTIONS WHICH IMPED THE FLOW OF THIS DRAINAGE PLAN SHALL BE ALLOWED.
7. ALL ELEVATIONS SHOWN ARE CITY OF WICHITA DATUM.

SHADOW WOODS ADDITION  
**MASTER GRADING PLAN**  
 WICHITA, KANSAS

**BAUGHMAN COMPANY P.A.**  
 ENGINEERING, SURVEYING, & PLANNING  
 318-282-1271 • 316 ELLIS • WICHITA, KANSAS 67211

PROJECT NUMBER \_\_\_\_\_ SHEET **4**

DESIGN \_\_\_\_\_ DRAWN **SCJ** APPROVED \_\_\_\_\_ DATE **03/13/03** SCALE \_\_\_\_\_ NOTE \_\_\_\_\_

REVISED PH. 3 GRADES FINALIZED 8/18/05 BY AEG  
 REVISED PH. 2 GRADES FINALIZED 12/14/04 BY AEG  
 REVISED PH. 4 GRADES FINALIZED 10/15/04 BY AEG  
 REVISED PH. 1 GRADES 10/9/03 BY AEG PER NBW  
 REVISED NORTH P.L. & ESM'T GRADES 7/15/03 BY SMD PER AEG  
 REVISED SOUTH R/W GRADES 6/25/03 BY AEG