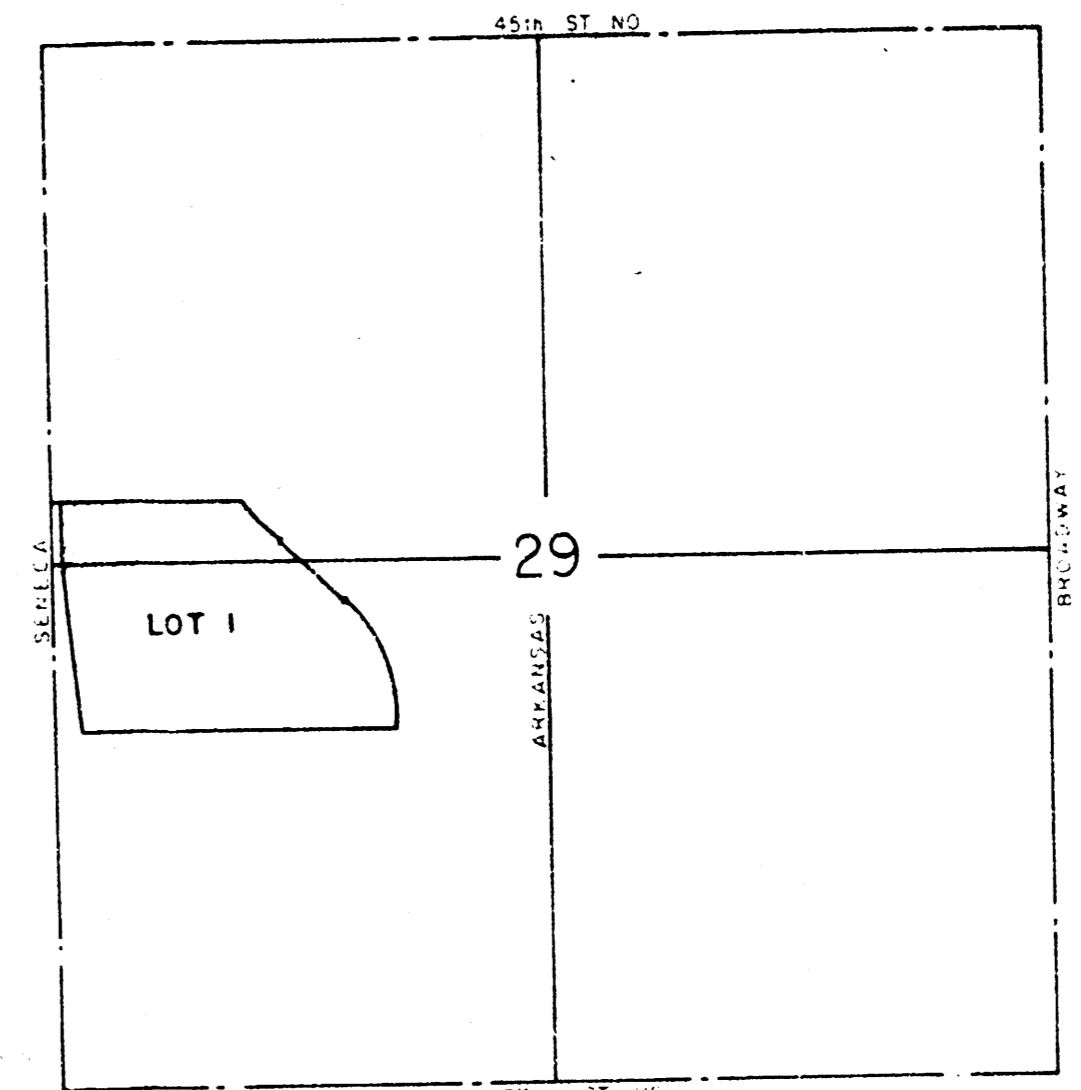
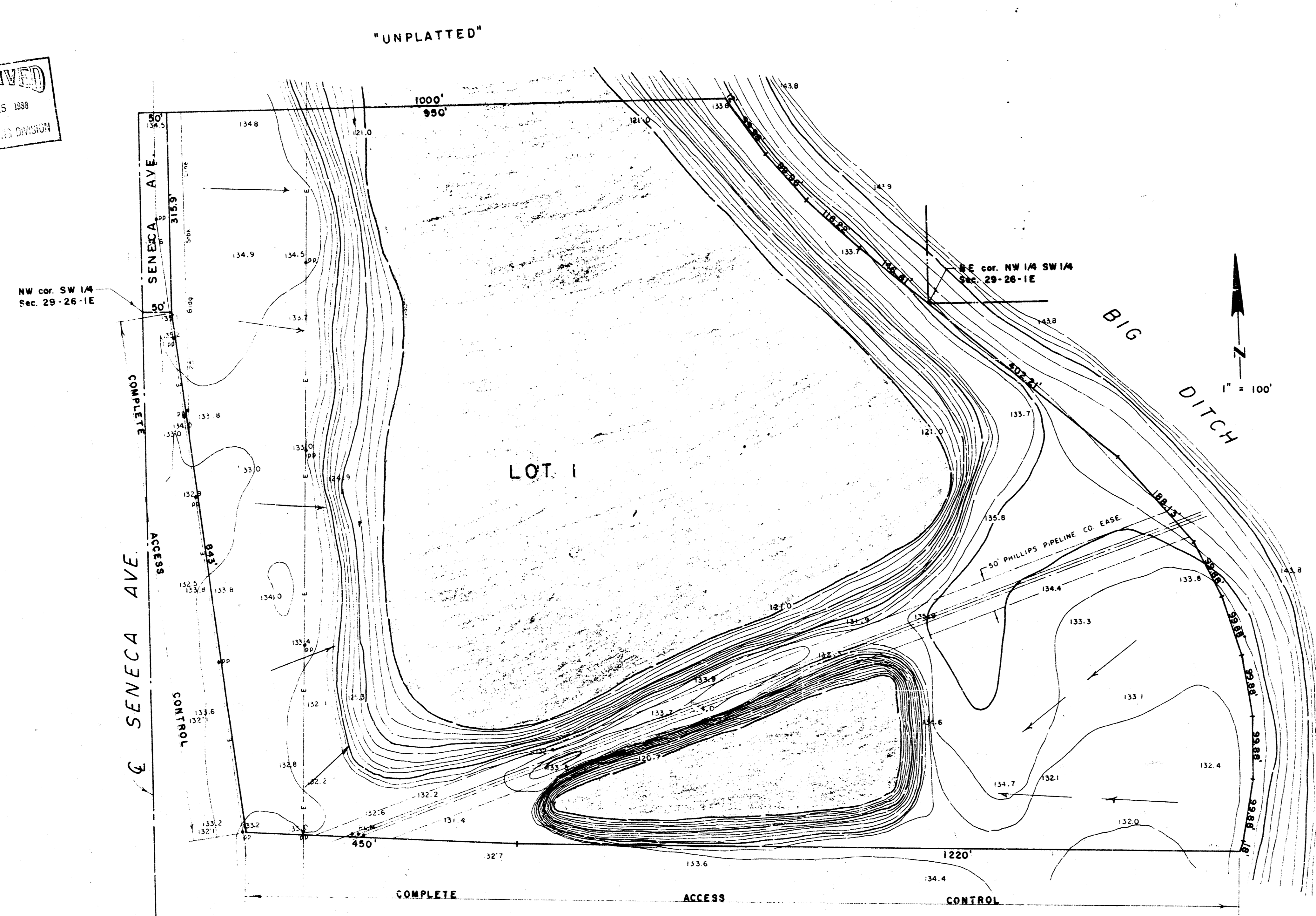


Shark's Nest

RECEIVED  
AUG 25 1988  
ENGINEERING DIVISION



VICINITY MAP  
1" = 1000'

GRADING PLAN  
PRELIMINARY PLAT  
SHARK'S NEST,  
WICHITA, SEDGWICK COUNTY, KANSAS.

FOR: EDGAR DWIRE  
305 W. CENTRAL  
WICHITA, KS 67203

LOWELL D. HIGH, L.S.

SHERWOOD VILLAGE ADD.

Min Pad 1126  
2150.6

ALL OF LOT 1 TO DRAIN  
TO EXISTING PONDS

TOPO MADE AUGUST, 1988.

B.M. - ELEV. 144.74 - CITY OF WICHITA DATUM,  
STD. DISC ON TOP OF CONC.  
WING ON SE CORNER OF  
BRIDGE OVER BIG DITCH  
AT 37TH ST. NO.