

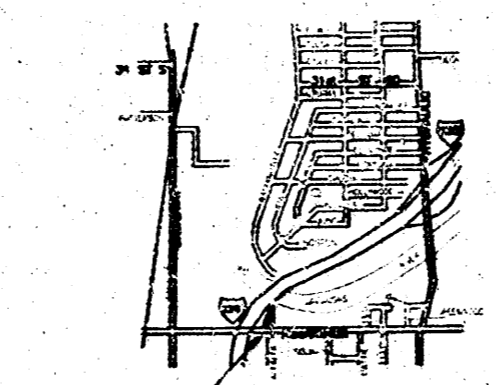


Drainage Plan SHAVER ADDITION Wichita, Sedgwick County, Kansas

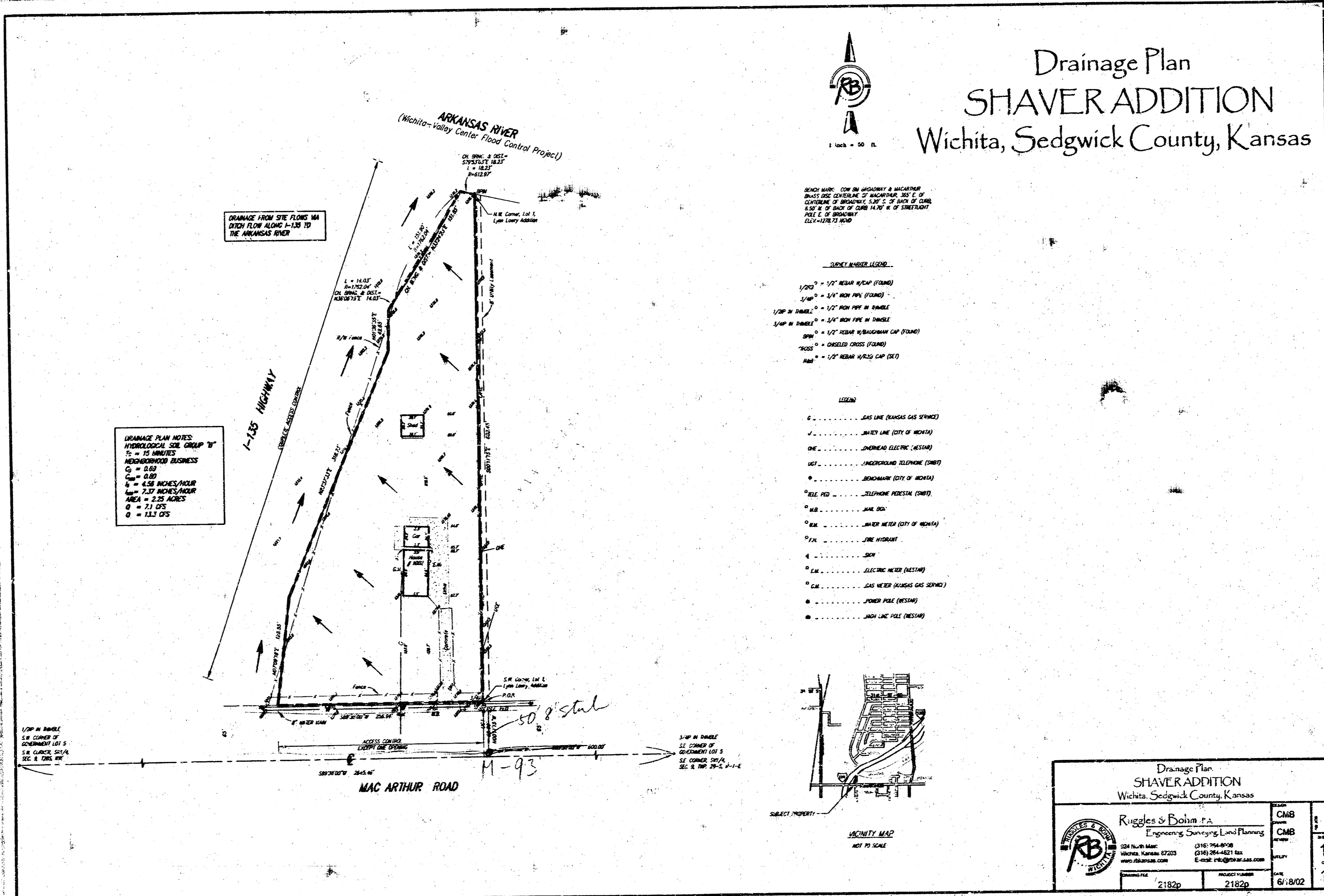
THIS PLAN IS A PRELIMINARY DESIGN AND IS SUBJECT TO CHANGE WITHOUT NOTICE. THE USER OF THIS PLAN SHALL BE RESPONSIBLE FOR OBTAINING ALL NECESSARY PERMITS AND FOR VERIFYING THE ACCURACY OF ALL DATA AND CONDITIONS SHOWN HEREON.

- PIPE SIZES:**
- 1" = 1" RIBBON DUCT
 - 2" = 2" RIBBON DUCT
 - 3" = 3" RIBBON DUCT
 - 4" = 4" RIBBON DUCT
 - 6" = 6" RIBBON DUCT
 - 8" = 8" RIBBON DUCT
 - 10" = 10" RIBBON DUCT
 - 12" = 12" RIBBON DUCT
 - 15" = 15" RIBBON DUCT
 - 18" = 18" RIBBON DUCT
 - 24" = 24" RIBBON DUCT

- NOTES:**
- 1. ALL NEW DRAINAGE SYSTEMS SHALL BE INSTALLED IN ACCORDANCE WITH THE LATEST EDITION OF THE KANSAS DRAINAGE CODE.
 - 2. ALL EXISTING DRAINAGE SYSTEMS SHALL BE MAINTAINED AND REPAIRED AS NECESSARY.
 - 3. ALL NEW DRAINAGE SYSTEMS SHALL BE INSTALLED IN ACCORDANCE WITH THE LATEST EDITION OF THE KANSAS DRAINAGE CODE.
 - 4. ALL EXISTING DRAINAGE SYSTEMS SHALL BE MAINTAINED AND REPAIRED AS NECESSARY.
 - 5. ALL NEW DRAINAGE SYSTEMS SHALL BE INSTALLED IN ACCORDANCE WITH THE LATEST EDITION OF THE KANSAS DRAINAGE CODE.
 - 6. ALL EXISTING DRAINAGE SYSTEMS SHALL BE MAINTAINED AND REPAIRED AS NECESSARY.



SEE SHEET 2150P FOR DETAILS



DRAINAGE PLAN NOTES:
 1. ALL NEW DRAINAGE SYSTEMS SHALL BE INSTALLED IN ACCORDANCE WITH THE LATEST EDITION OF THE KANSAS DRAINAGE CODE.
 2. ALL EXISTING DRAINAGE SYSTEMS SHALL BE MAINTAINED AND REPAIRED AS NECESSARY.
 3. ALL NEW DRAINAGE SYSTEMS SHALL BE INSTALLED IN ACCORDANCE WITH THE LATEST EDITION OF THE KANSAS DRAINAGE CODE.
 4. ALL EXISTING DRAINAGE SYSTEMS SHALL BE MAINTAINED AND REPAIRED AS NECESSARY.

Drainage Plan SHAVER ADDITION Wichita, Sedgwick County, Kansas	
	Ruggles & Pothol, P.A. Engineering, Surveying, Land Planning 1000 North Kansas, 17203 Wichita, Kansas 67203 Phone: (316) 261-1234 Fax: (316) 261-1235 Email: info@rugglesandpothol.com
DATE: 2/15/02	SCALE: 1" = 100'
PROJECT NO: 2150P	DATE: 01/02