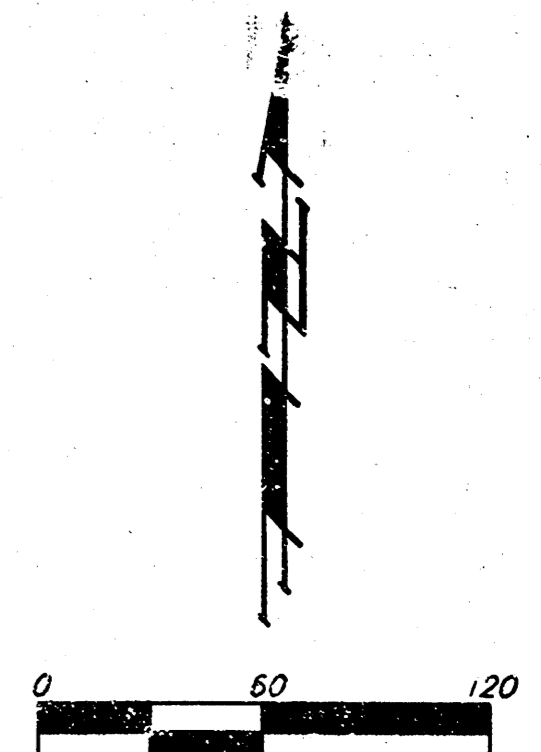
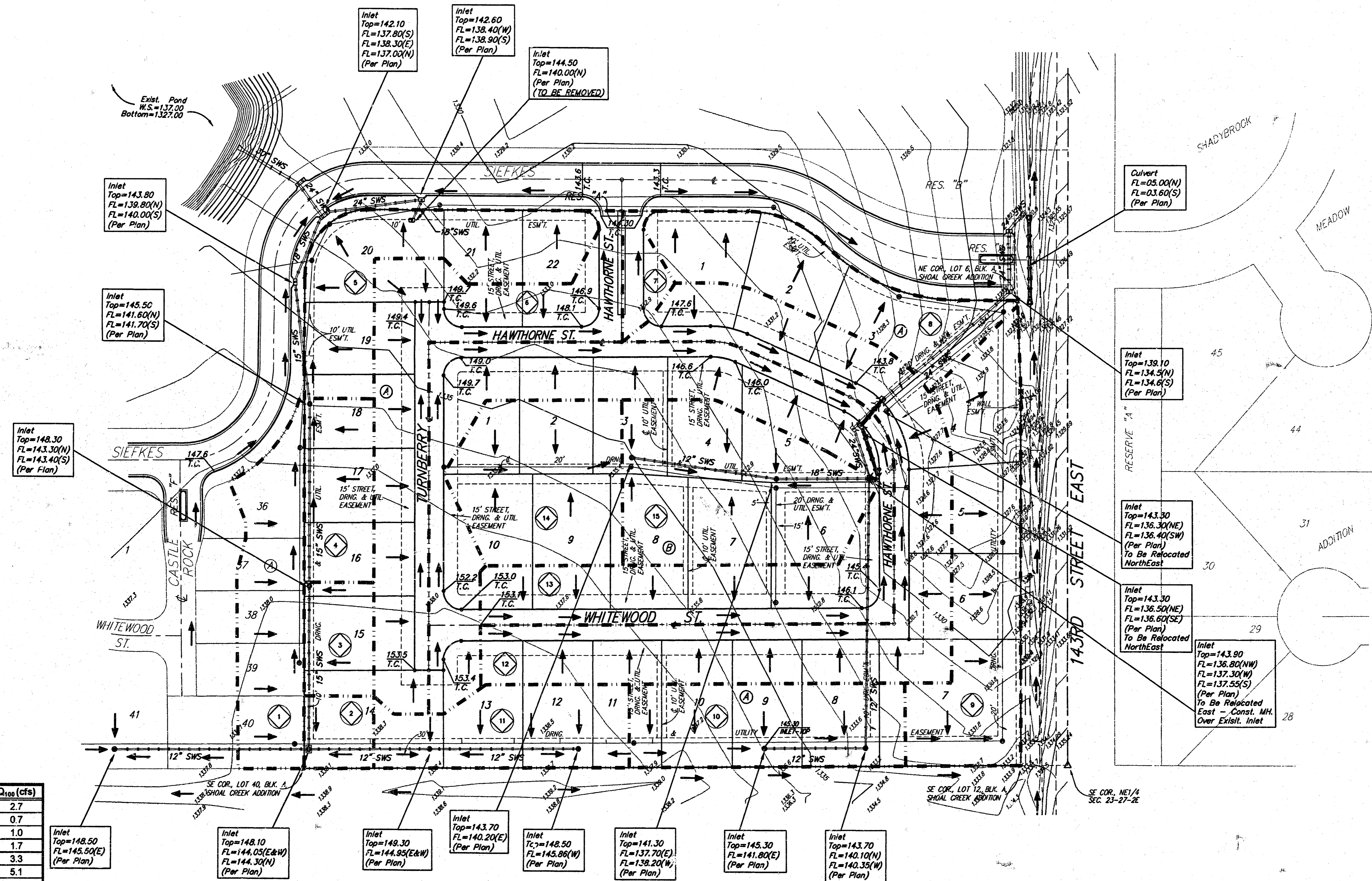


DRAINAGE PLAN SHOAL CREEK 2ND ADDITION WICHITA, SEDGWICK COUNTY, KANSAS



- = #4 REBAR W/ "BAUGHMAN" CAP (SET)
- = #4 REBAR W/ "BAUGHMAN" CAP (FOUND)
- = #4 REBAR W/ "TSC" CAP (FOUND)
- = #6 REBAR (FOUND)

BENCHMARK:
 "1" Cut on Top of Curb, North Side Siekes, NW of Center Line of Siekes Ct., Shoalbrook Meadow Addition.
 Elev. = 135.19 City Datum (1322.59 NGVD)



Shoal Creek 2nd Addition
 Rational Method - Q = CIA - tc = 15 min.

Basin	Area	C ₁	C ₁₀₀	Q ₁ (cfs)	Q ₁₀₀ (cfs)
1	0.54	0.48	0.68	1.0	2.7
2	0.13	0.48	0.68	0.2	0.7
3	0.20	0.48	0.68	0.4	1.0
4	0.33	0.48	0.68	0.6	1.7
5	0.66	0.48	0.68	1.2	3.3
6	1.02	0.48	0.68	1.9	5.1
7	0.11	0.48	0.68	0.2	0.6
8	0.63	0.48	0.68	1.2	3.2
9	0.87	0.48	0.68	1.6	4.4
10	0.58	0.48	0.68	1.1	2.9
11	0.47	0.48	0.68	0.9	2.4
12	1.55	0.48	0.68	2.8	7.8
13	1.64	0.48	0.68	3.0	8.2
14	0.66	0.48	0.68	1.2	3.3
15	0.87	0.48	0.68	1.6	4.4