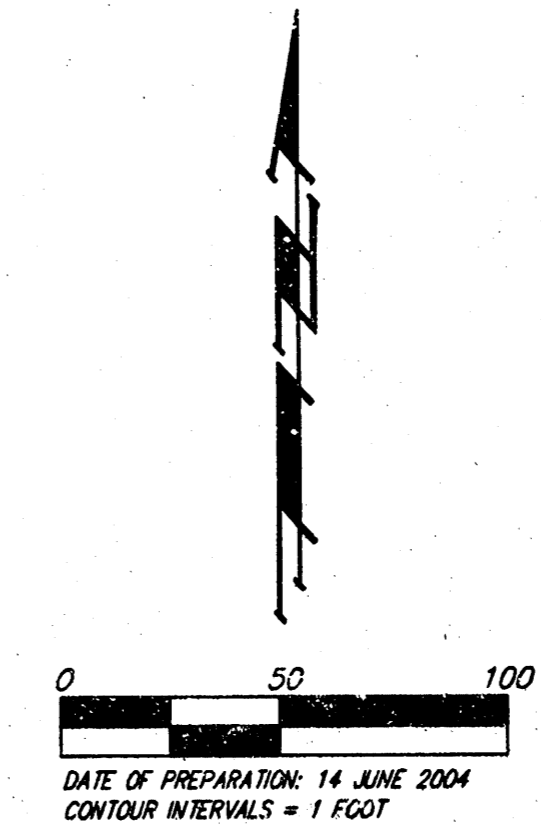
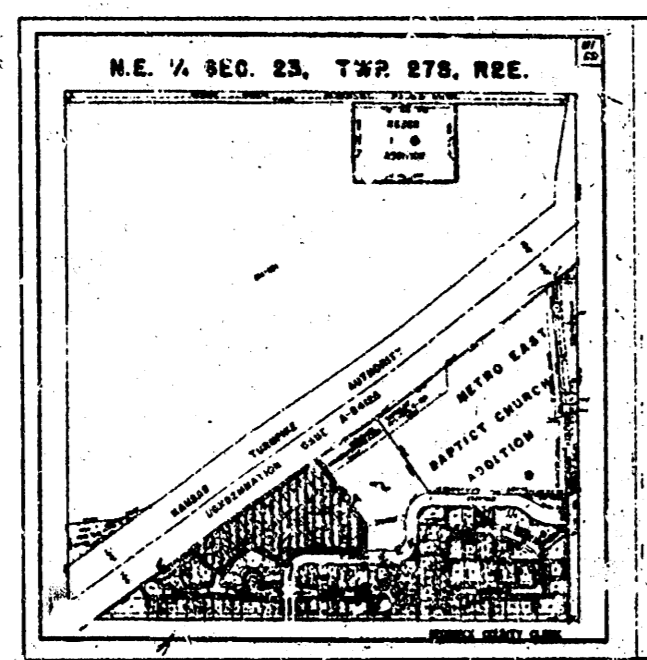


DRAINAGE PLAN SHOAL CREEK 3RD ADDITION WICHITA, SEDGWICK COUNTY, KANSAS



MINIMUM BUILDING PAD ELEVATIONS FOR LOWEST OPENING TO THE STRUCTURES			
LOTS	BLOCK	CITY DATUM	MEAD
1,2,3,4	A	141.6	1329.0

BENCHMARK:
"13" CUT ON TOP OF CURB, NORTH SIDE SIEFKES,
NW OF CENTER LINE OF SIEFKES CT., SHADYBROOK
MEADOW ADDITION.
ELEV. = 135.19 CITY DATUM
(1322.59 NGVD)

Notes:
Detailed drainage calculation has not been supplied
with this submittal of "Shoal Creek 3rd Addition".
"Minimal alteration" to the original "Shoal Creek
Addition" are being proposed. Drainage basins and
street grades follow the same intent of the
original Shoal Creek Drainage Plan.

