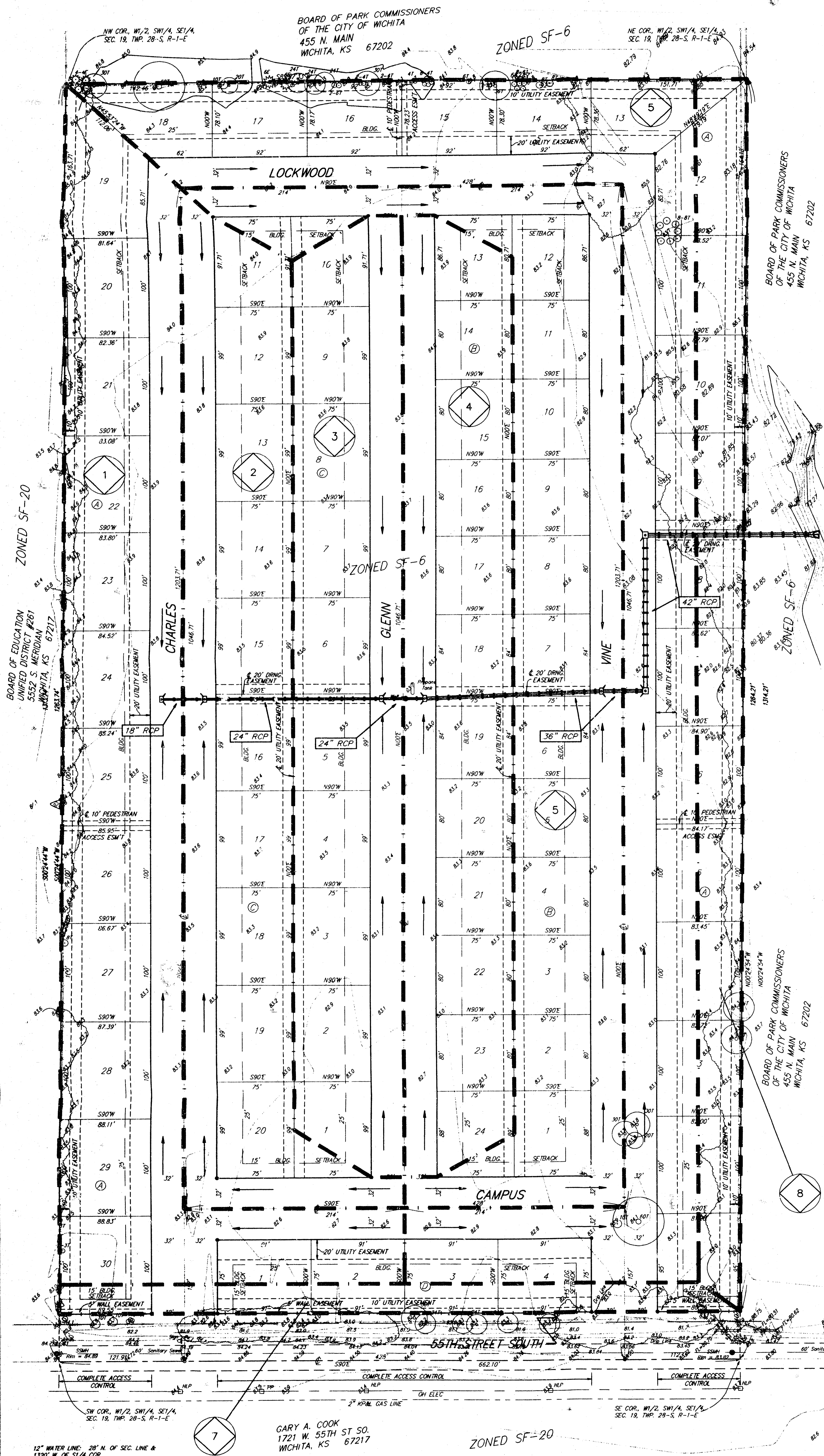


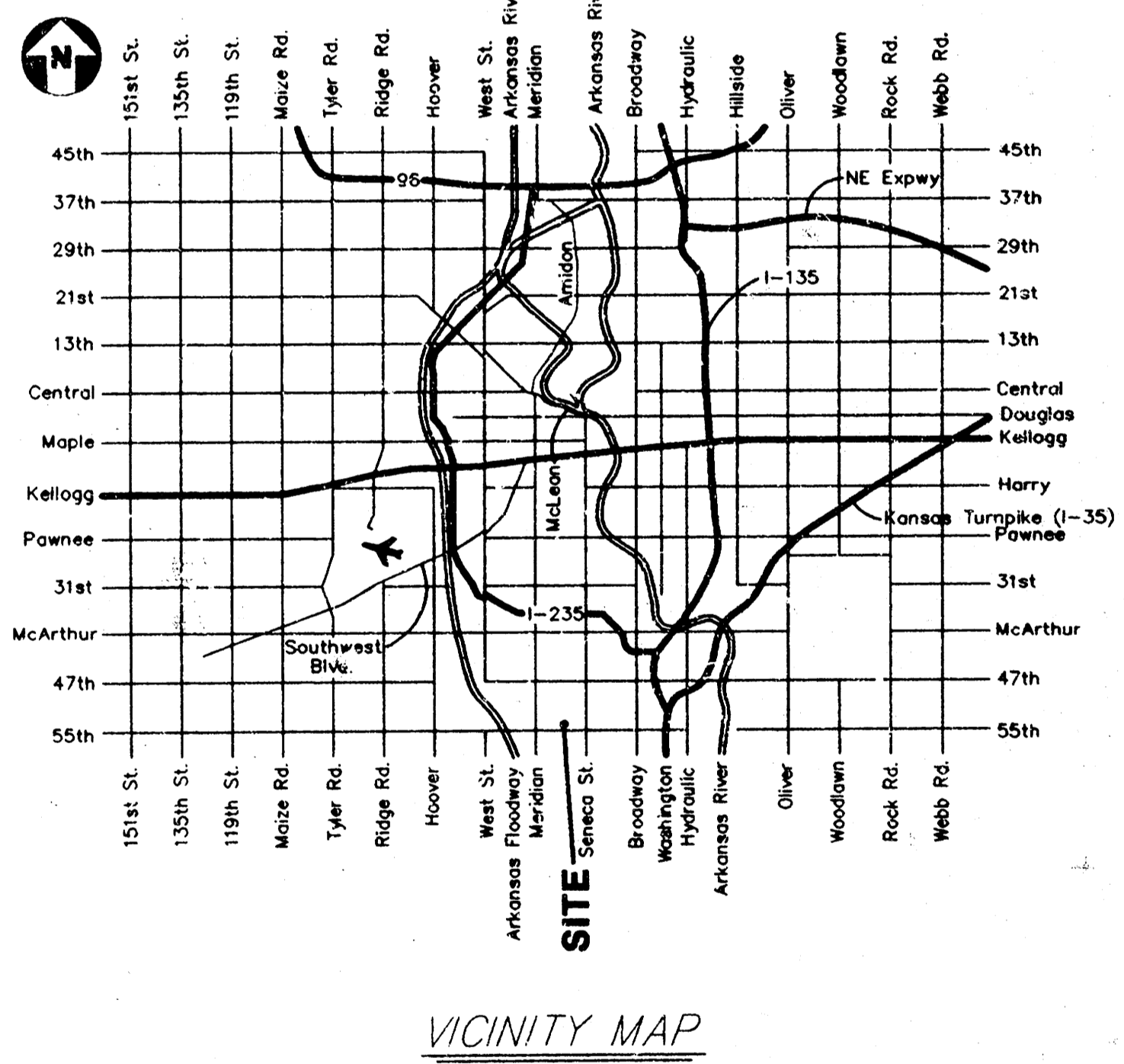
# DRAINAGE PLAN

## SIMMONS PARK ADDITION

### WICHITA, SEDGWICK COUNTY, KANSAS



Drainage Area	Area (acres)	C <sub>s</sub>	C <sub>w</sub>	T <sub>c</sub> (min)	I <sub>p</sub> (ft/hr)	I <sub>m</sub> (in/hr)	Q <sub>p</sub> (cfs)	Q <sub>m</sub> (cfs)
1	3.5	0.54	0.54	15	3.83	7.36	7.2	13.9
2	2.5	0.54	0.54	15	3.83	7.36	5.4	10.3
3	2.3	0.54	0.54	15	3.83	7.36	4.8	9.1
4	2.3	0.54	0.54	15	3.83	7.36	4.8	9.1
5	3.6	0.54	0.54	15	3.83	7.36	7.4	14.3
6	3.0	0.54	0.54	15	3.83	7.36	6.2	11.9
7	0.4	0.54	0.54	15	3.83	7.36	0.8	1.6
8	1.3	0.54	0.54	15	3.83	7.36	2.7	5.2



12" WATER LINE, 28" N. OF SEC. LINE & 1320' W. OF S1/4 COR.

GARY A. COOK  
1721 W. 55TH ST. S.O.  
WICHITA, KS 67217

ZONED SF-20

SE COR. W1/2 SW1/4 SE1/4 SEC. 19, TWP. 28-S, R-1-E

**BAUGHMAN COMPANY P.A.**  
ENGINEERING, SURVEYING, & PLANNING  
(316)-262-7271 • 315 ELLIS • WICHITA, KANSAS 67211

February 11, 1998