

June 5, 1996

Ms. Vicki Huang, P.E.
City Engineer's Office
City Hall - 7th floor
455 North Main Street
Wichita, Kansas 67202

Re: Drainage Concept Plan
Smithmoor 5th Addition to Wichita, Sedgwick County, Kansas

Dear Ms. Huang:

Attached please find the referenced drainage concept plans.

Please feel free to call me if you have any questions or need additional information.

Sincerely,
Municipal Engineers, P.A.

[Signature]
Babar M. Khan, P.E., L.S.

BKst: encl.

RECEIVED
JUN 13 1996
CITY - ENGINEERING

July 17, 1996

Ms. Vicki Huang, P.E.
City Engineer's Office
City Hall - 7th floor
455 North Main Street
Wichita, Kansas 67202

Re: Drainage Plan for
Smithmoor Fifth Addition to Wichita, Sedgwick County, Kansas

Dear Ms. Huang:

Smithmoor Fifth Addition area was included in the drainage basin for Smithmoor Fourth Addition drainage study dated June 22, 1994. Storm sewers constructed in Smithmoor Fourth Addition were designed to include developed drainage flows from Smithmoor Fifth Addition. No change is anticipated in drainage patterns as shown in the plan submitted for Smithmoor Fourth Addition. Drainage plan for Smithmoor Fourth should be considered the drainage plan for Smithmoor Fifth Addition.

Please feel free to call me if you have any questions or need additional information.

Sincerely,
Municipal Engineers, P.A.

[Signature]
Babar M. Khan, P.E., L.S.

BKst:

VIA FAX & MAIL
MUNICIPAL ENGINEERS, P.A.
CIVIL ENGINEERS & LAND SURVEYORS
262-3842
262-8634

254 Laura, Suite 201 • Wichita, Kansas 67211 • (316) 262-3842 • Fax (316) 262-8634

TRANSMITTAL

Date: 7-24-96 No. of Pages: 2 (incl. cover)
To: VICKI HUANG, PE Project: SMITHMOOR FIFTH
CITY ENGINEERING ADDITION
Project No.: 96-29

Subject: _____

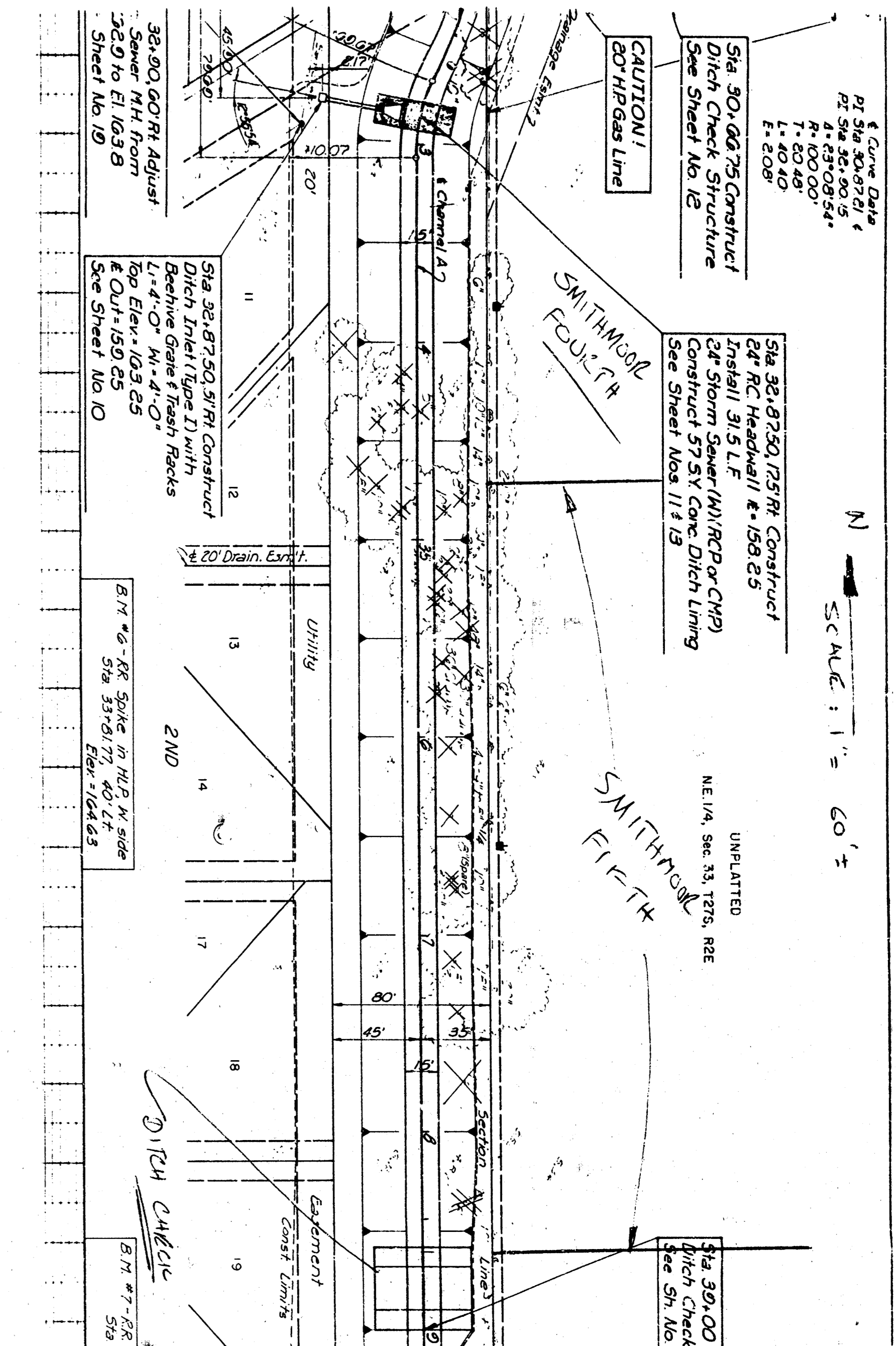
Comments: I HAVE DRAWN LOCATION OF SMITHMOOR FIFTH
ADDITION ON CONSTRUCTION PLANS FOR DRAINAGE
DITCH LOCATED ALONG THE WEST SIDE OF
ADDITION. THE DITCH CENTER IS LOCATED SOUTH
OF THE PROPOSED ADDITION AND WILL NOT
IMPACT MIN. BUILDING DAO REQUIREMENTS FOR
LOTS ADJACENT TO DITCH.

PLEASE CALL IF YOU HAVE QUESTIONS.

DRAWN BY: _____

From: Babar Khan

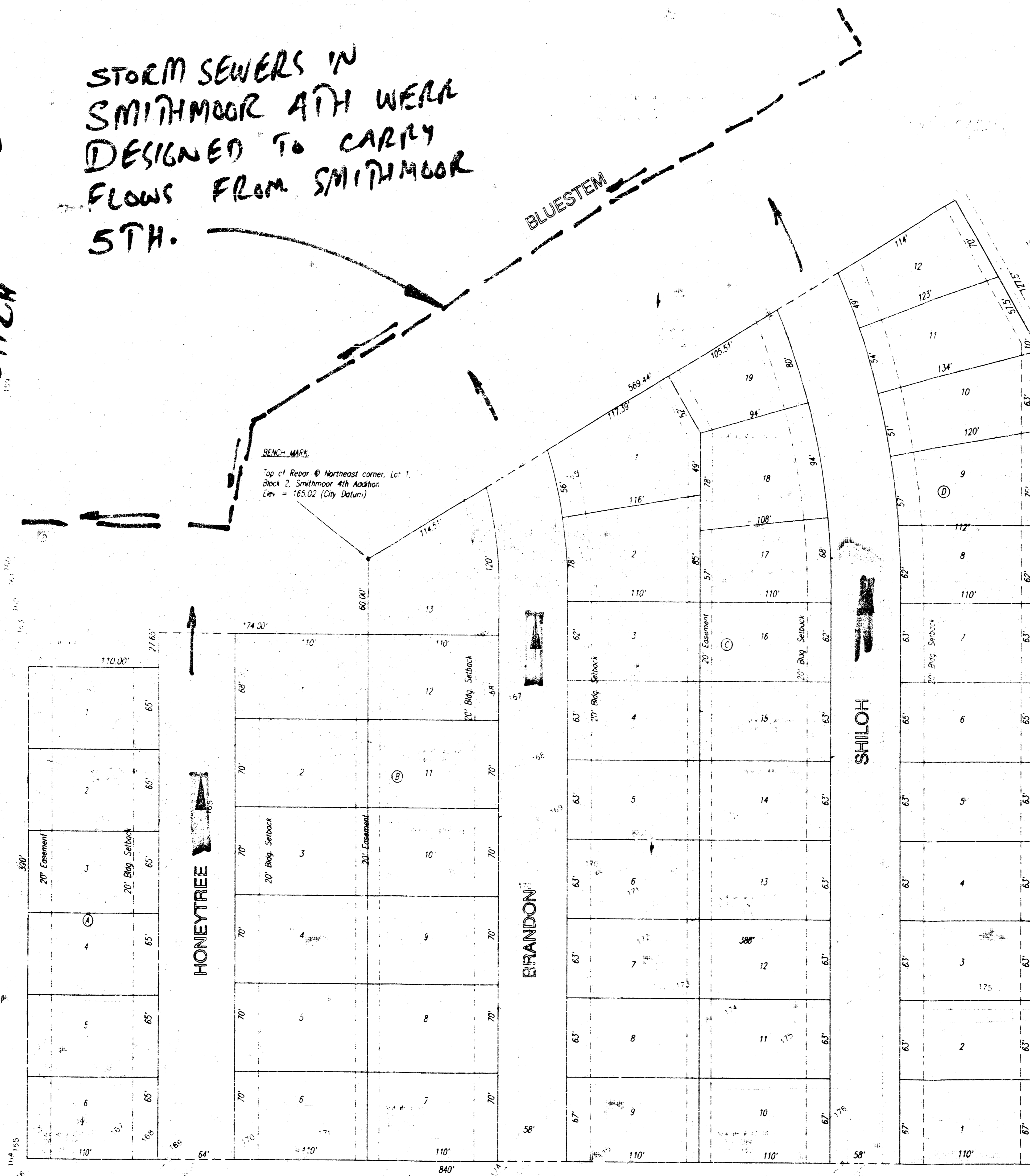
RECEIVED
JUL 24 1996
CITY - ENGINEERING



HARRY STREET

EXISTING DRAINAGE DITCH

STORM SEWERS IN SMITHMOOR 4TH WERE DESIGNED TO CARRY FLOWS FROM SMITHMOOR 5TH.



LEGAL DESCRIPTION:

Beginning at the Southwest corner of Smithmoor Fourth Addition to Wichita, Sedgwick County, Kansas, said point of beginning being on the West line of the Northeast quarter of Section 33, Township 27 South and Range 2 East of the 6th P.M., in Sedgwick County, Kansas, said point of beginning also being 1,078.1 feet South of the Northwest corner of said Northeast quarter; thence South along the West line of said Northeast quarter, 390.00 feet; thence East at right angle to said West line, 840.00 feet; thence North parallel to said West line 655.00 feet; thence Northwesterly, 127.5 feet, more or less to the Southeast corner of said Smithmoor 4th addition; thence Southwesterly along the Southern line of said Smithmoor Fourth Addition, 569.44 feet; thence South 60.00 feet to the Southeast corner of lot 1, Block 2 of said Smithmoor Fourth Addition; thence West along the South line of said Smithmoor Fourth Addition, 174.00 feet; thence South 27.65 feet to the Southeast corner of Lot 1, Block 1, said Smithmoor Fourth Addition; thence West along the South line of said Smithmoor fourth addition, 110.00 feet to the point of beginning, containing 10.7 acres, more or less.

SUBDIVIDER:

Smith & Company
P.O. Box 780565
Wichita, Kansas 67278

SURVEYOR/ENGINEER

Bahar M. Khan, P.E., L.S.
Municipal Engineers, P.A.
254-Laura, Suite 201
Wichita, Kansas 67211

SMITHMOOR FIFTH ADDITION:

NUMBER OF LOTS	50 RESIDENTIAL
MINIMUM LOT AREA	6,000 S.F.
CURRENT ZONING	"A"

DRAINAGE CONCEPT PLAN
~~PRELIMINARY PLAN~~
SMITHMOOR FIFTH ADDITION
WICHITA, SEDGWICK COUNTY, KANSAS

NOTE: PLEASE REFER TO SMITHMOOR 4TH DRAINAGE STUDY.

B.M.
6/5/96

HARRY STREET

SCALE: 1" = 50'

SMITHMOOR
THIRD ADDITION

LEGAL DESCRIPTION:

Beginning at the Southwest corner of Smithmoor Fourth Addition to Wichita, Sedgwick County, Kansas, said point of beginning being on the West line of the Northeast quarter of Section 33, Township 27 South and Range 2 East of the 6th P.M., in Sedgwick County, Kansas, said point of beginning also being 1,707.81 feet South of the Northwest corner of said Northeast quarter; thence South along the West line of said Northeast quarter, 360.00 feet; Thence East at right angle to said West line, 842.00 feet; Thence North parallel to said West line 655.00 feet; thence Northwesterly, 127.5 feet, more or less to the Southeast corner of said Smithmoor Fourth Addition; thence Southwesterly along the Southerly line of said Smithmoor Fourth Addition, 568.44 feet; Thence South 80' 10" feet to the Southeast corner of Lot 1, Block 2 of said Smithmoor Fourth Addition; thence West along the South line of said Smithmoor Fourth Addition, 174.00 feet; thence South 27.85 feet to the Southeast corner of Lot 1, Block 1, said Smithmoor Fourth Addition; Thence West along the South line of said Smithmoor fourth addition, 110.00 feet to the point of beginning, containing 10.7 acres, more or less.

SUBDIVIDER:

Smith & Company
P.O. Box 780563
Wichita, Kansas 67278

SURVEYOR/ENGINEER

Rubar M. Kizer, P.E., L.S.
Municipal Engineers, P.A.
254-Laura, Suite 201
Wichita, Kansas 67211

SMITHMOOR FIFTH ADDITION:

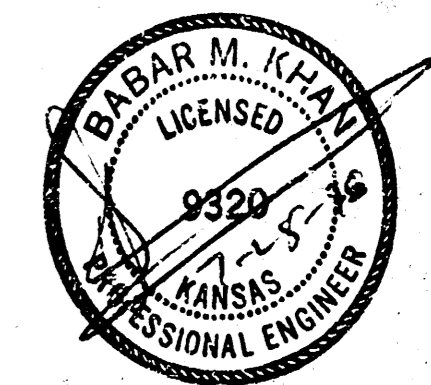
NUMBER OF LOTS 50 RESIDENTIAL
MINIMUM LOT AREA 6,000 S.F.
CURRENT ZONING "M"

**LOT GRADING PLAN
SMITHMOOR FIFTH ADDITION
WICHITA, SEDGWICK COUNTY, KANSAS**

LEGEND:

- 177.5 PROPOSED BUILDING PAD ELEVATION (ADD 6" FOR FINISHED FLOOR)
- 177— FINISHED CONTOURS
- 174 EXISTING CONTOURS
- 169.5 PROPOSED LOT CORNER ELEVATION

**APPROVED
DRAINAGE PLAN**



MUNICIPAL ENGINEERS, P.A.
254-Laura, Suite 201
WICHITA, KANSAS 67211
316-262-3542

