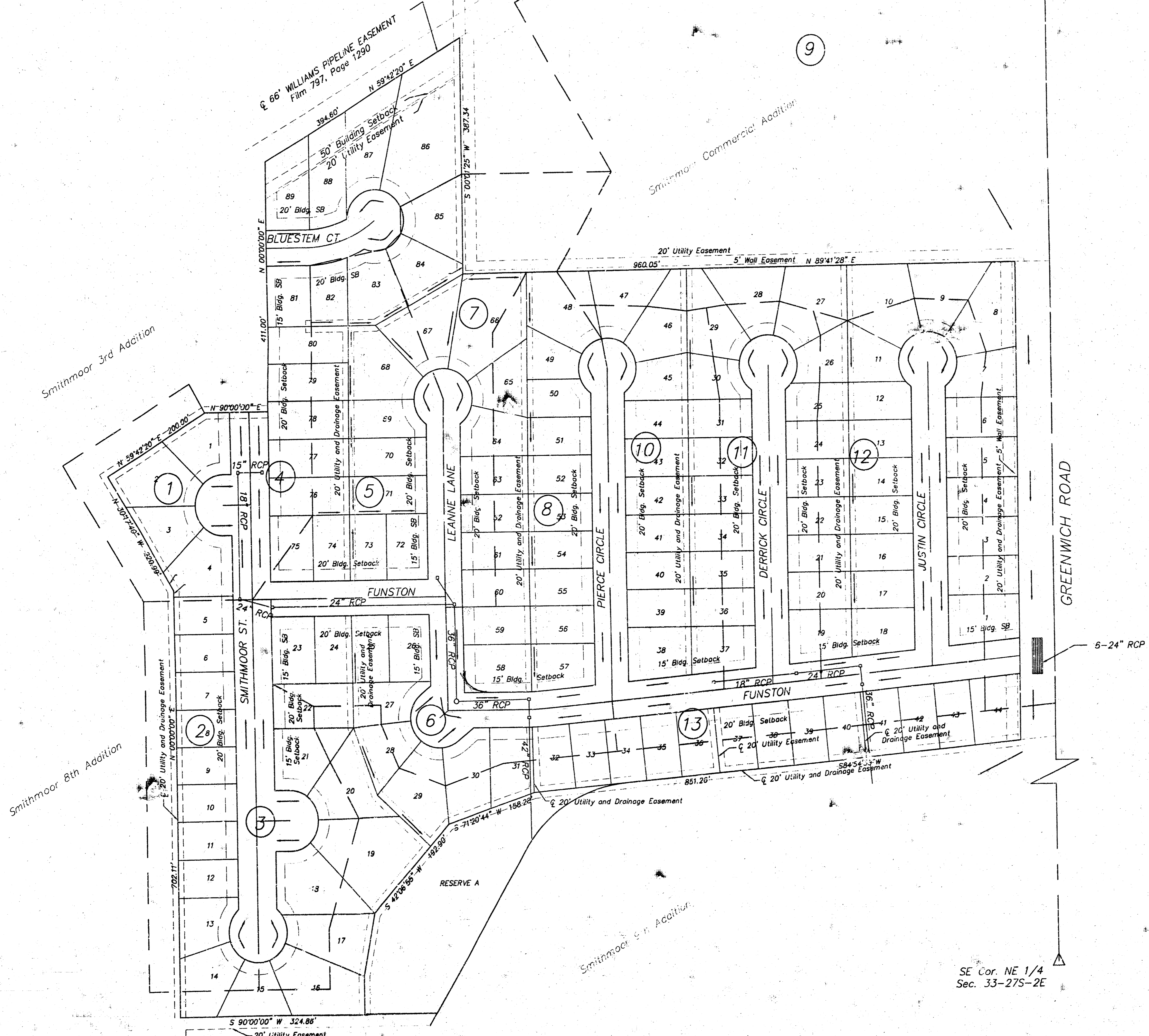
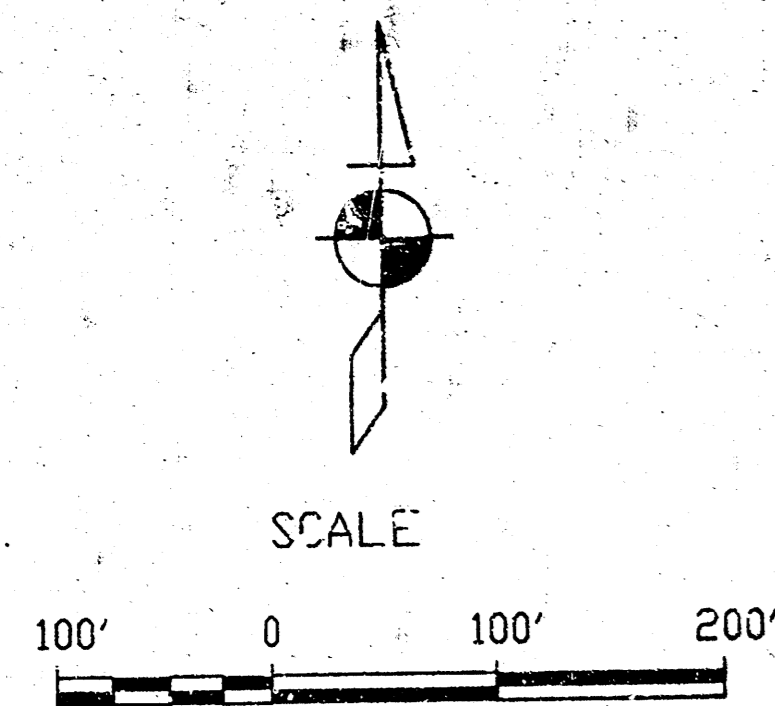
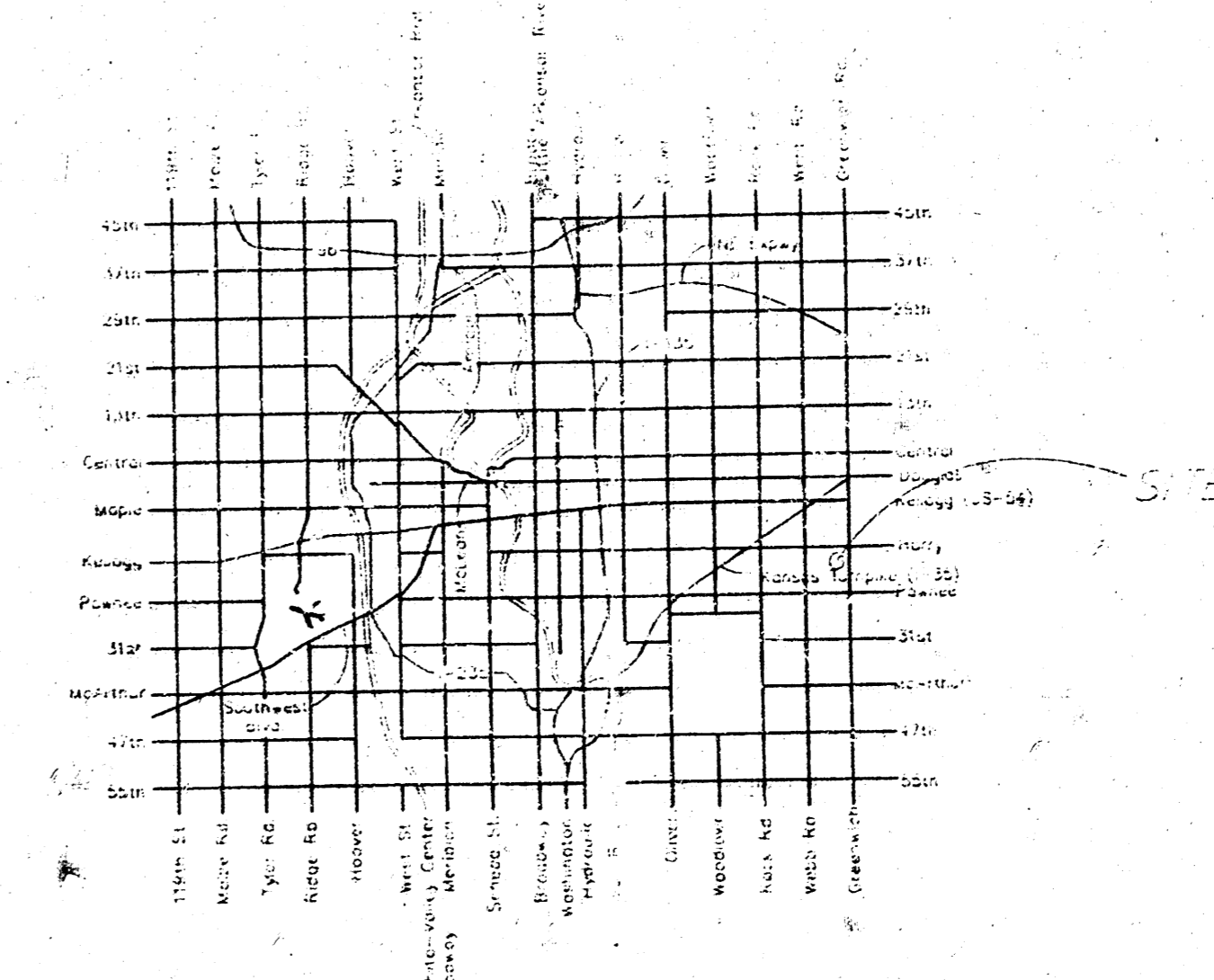


DRAINAGE PLAN FOR  
SMITHMOOR 10TH ADDITION  
TO SEDGWICK COUNTY, KANSAS

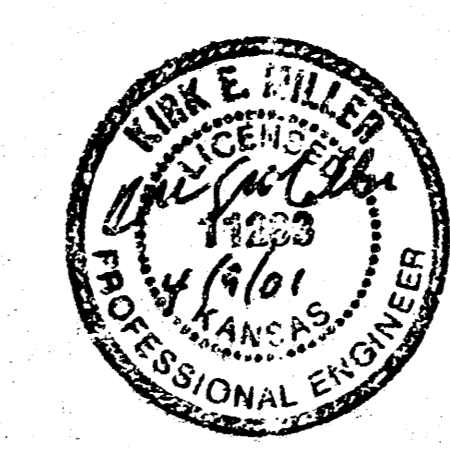


A #	AREA	IS	CS	OS	I100	C100	O100
1	1.9	4.56	0.58	5.0	7.37	0.77	10.8
2	2.9	4.56	0.58	7.7	7.37	0.77	16.5
3	1.7	4.56	0.58	4.5	7.37	0.77	9.6
4	0.6	4.56	0.58	1.6	7.37	0.77	3.4
5	2.9	4.56	0.58	7.7	7.37	0.77	16.5
6	2.1	4.56	0.58	5.6	7.37	0.77	11.9
7	2.5	4.56	0.58	6.6	7.37	0.77	14.2
8	3.4	4.56	0.58	9.0	7.37	0.77	19.3
9	17.2	4.56	0.69	54.1	7.37	0.80	101.4
10	2.8	4.56	0.58	7.4	7.37	0.77	15.9
11	2.5	4.56	0.58	6.6	7.37	0.77	14.2
12	3.9	4.56	0.58	10.3	7.37	0.77	22.1
13	1.2	4.56	0.58	3.2	7.37	0.77	6.8



LOCATION MAP

SE Cor. NE 1/4  
Sec. 33-27S-2E



Filename: 01001@ainph.dwg

**kemiller**  
engineering

516 S. Market, Wichita, KS 67202 316/264-0242