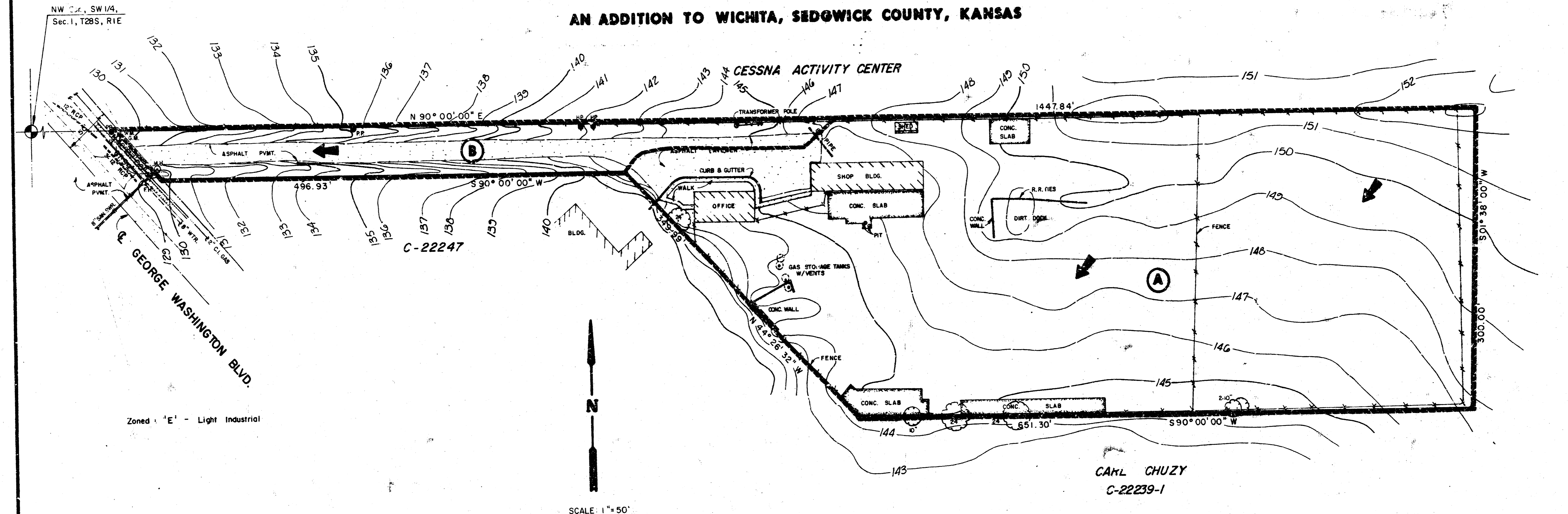


SNODGRASS CONSTRUCTION  
(Drainage)

# DRAINAGE & UTILITY PLAN

## SNODGRASS CONSTRUCTION ADDITION

AN ADDITION TO WICHITA, SEDGWICK COUNTY, KANSAS

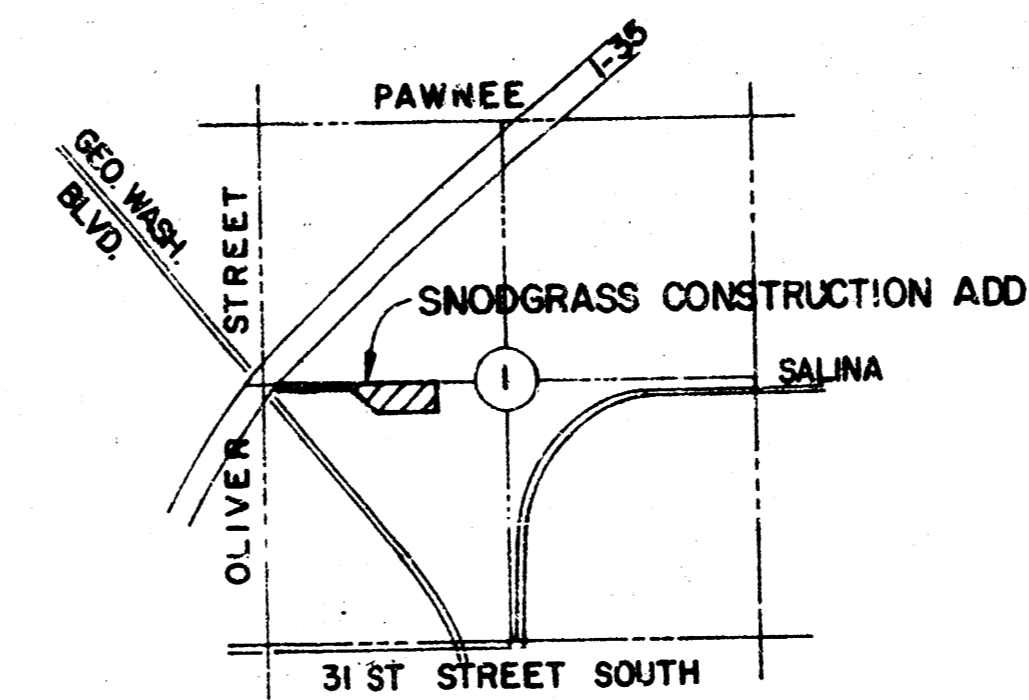


Zoned 'E' - Light Industrial

CAHL CHUZY  
C-22239-1

OWNER:  
SNODGRASS CONSTRUCTION ADDITION  
2700 GEORGE WASHINGTON BLVD.  
WICHITA, KANSAS 67221  
(316) 687-3110

Drainage Area	AREA ACRES	AREA ACCOM.	C <sub>s</sub>	C <sub>100</sub>	T <sub>c</sub>	I <sub>s</sub>	I <sub>100</sub>	Q <sub>s</sub>	Q <sub>100</sub>	Remarks
Area 'A' Drainage Across Property to Southeast (Light Industrial 705 Impervious)	5.06		0.69	0.04	15	4.54	7.37	16.53	31.79	Drainage Across to Property Southeast
Area 'B' Drainage Along Entrance to George Washington Blvd (Drive - 905 Impervious)	0.75		0.82	0.09	15	4.56	7.37	2.08	4.98	Drainage along entrance to George Washington Blvd.



LOCATION MAP

	DRAINAGE & UTILITY PLAN <b>SNODGRASS CONSTRUCTION ADDITION</b>	Design Drawn by Checked by Date 7-19-88 Job no.
	MID-KANSAS ENGINEERING CONSULTANTS PA 3500 NORTH ROCK ROAD BUILDING #800 WICHITA, KANSAS 67226	Sheet 682-6561 of