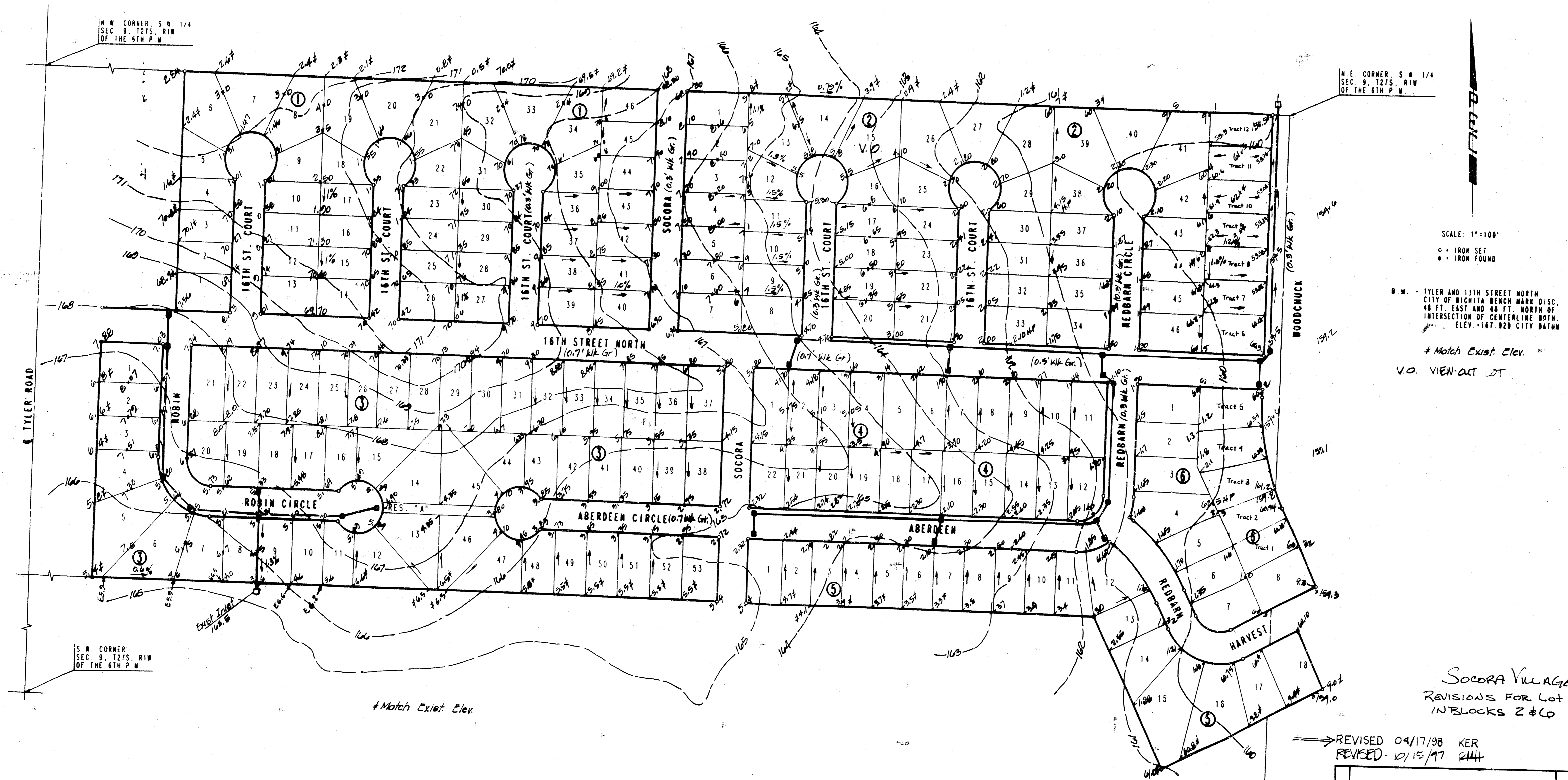


SOCORA VILLAGE

AN ADDITION TO WICHITA, SEDGWICK COUNTY, KANSAS



SCALE: 1" = 100'

• IRON SET
• IRON FOUND

B.M. - TYLER AND 16TH STREET NORTH
CITY OF WICHITA BENCH MARK DISC.
48 FT. EAST AND 48 FT. NORTH OF
INTERSECTION OF CENTERLINE BORN.
ELEV. -167.828 CITY DATUM

Match Exist. Elev.
V.O. VIEW-OUT LOT

SOCORA VILLAGE
REVISIONS FOR LOT SPLITS
IN BLOCKS 2 & 6

REVISED 09/17/98 KER
REVISED 12/15/97 RLL

No.	Revision	By	Date
DETAILED GRADING PLAN			
PROFESSIONAL ENGINEERING CONSULTANTS, P.A. ENGINEERS WICHITA, KANSAS			
Designed by	M.W.B.	Job No. 26-92209	Sht. / of /
Drawn by	E.G.	Date 10-09-98	

S.E. Cor. S.W. 1/4
Sec. 9, T21S, R1W
of 6th P.M.