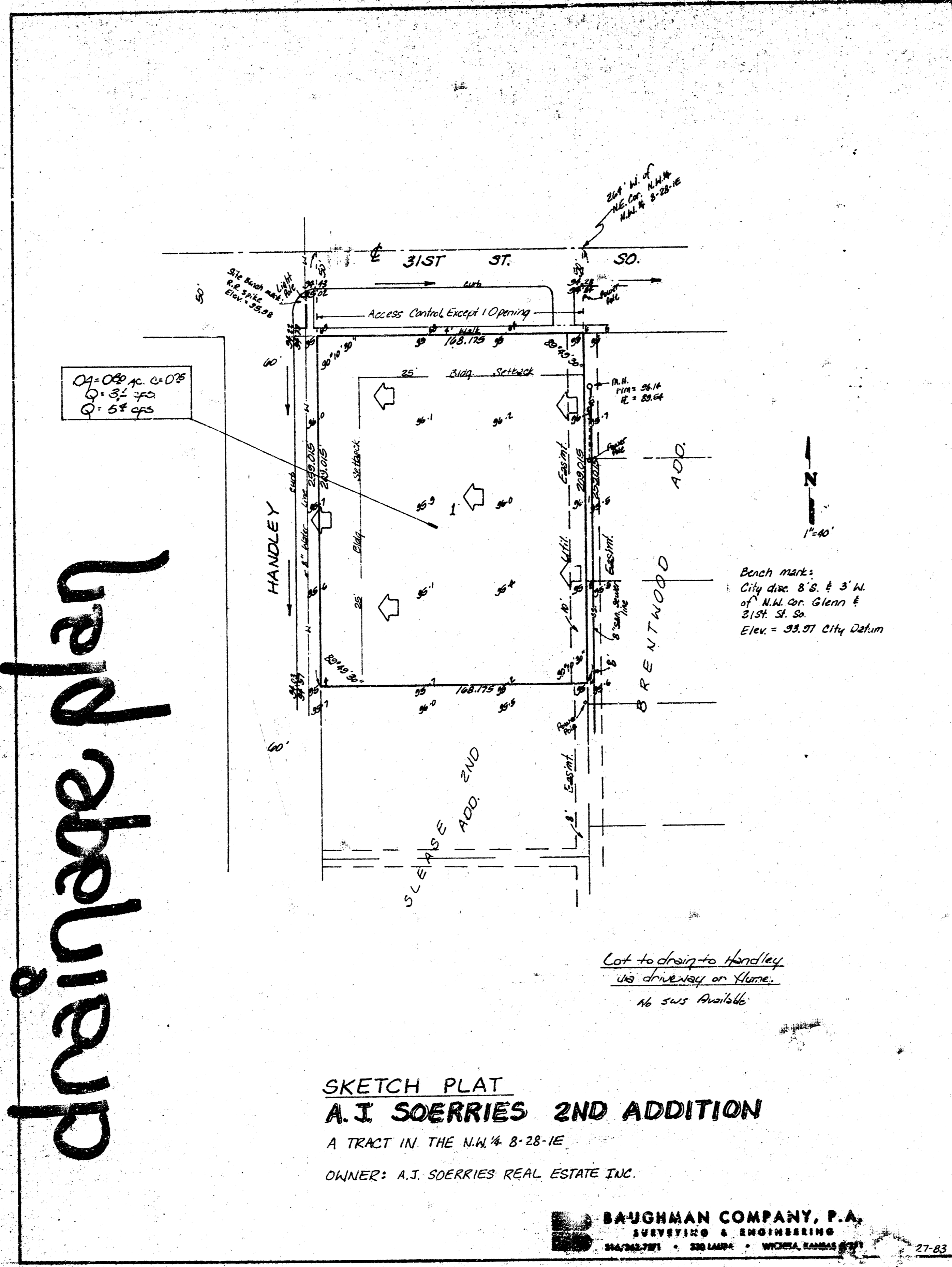


drainage plan



SKETCH PLAT  
**A. J. SOERRIES 2ND ADDITION**  
 A TRACT IN THE N.W. 1/4 8-28-1E  
 OWNER: A. J. SOERRIES REAL ESTATE INC.

**BAUGHMAN COMPANY, P.A.**  
 SURVEYING & ENGINEERING  
 316/262-7271 • 330 LAURA • WICHITA, KANSAS 67211

A. J. SOERRIES 2ND ADDITION  
 (DRAINAGE)

**BAUGHMAN COMPANY, P.A.**  
 SURVEYING & ENGINEERING  
 316/262-7271 • 330 LAURA • WICHITA, KANSAS 67211

**CONFIRMATION MEMO**

PROJECT	A. J. Soerries 2nd Addition	DATE	May 27, 1983
JOB NO.		COPIES TO	
TO	Chris Breitenstein		
FROM	N. Brent Wooten		
REFERENCE	Drainage Plan		

Final Plat is scheduled for Subdivision for June 9, 1983.  
 Lot 1 (0.80) will be developed for apartments. C = 0.75. Runoff will discharge west to Handley which drains south. Conveyance to the street will be thru driveway or flume.

PAGE \_\_\_ OF \_\_\_