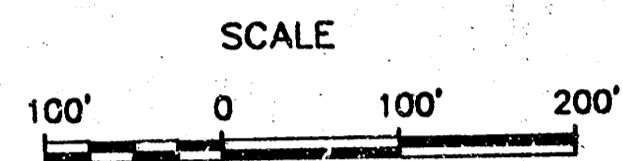
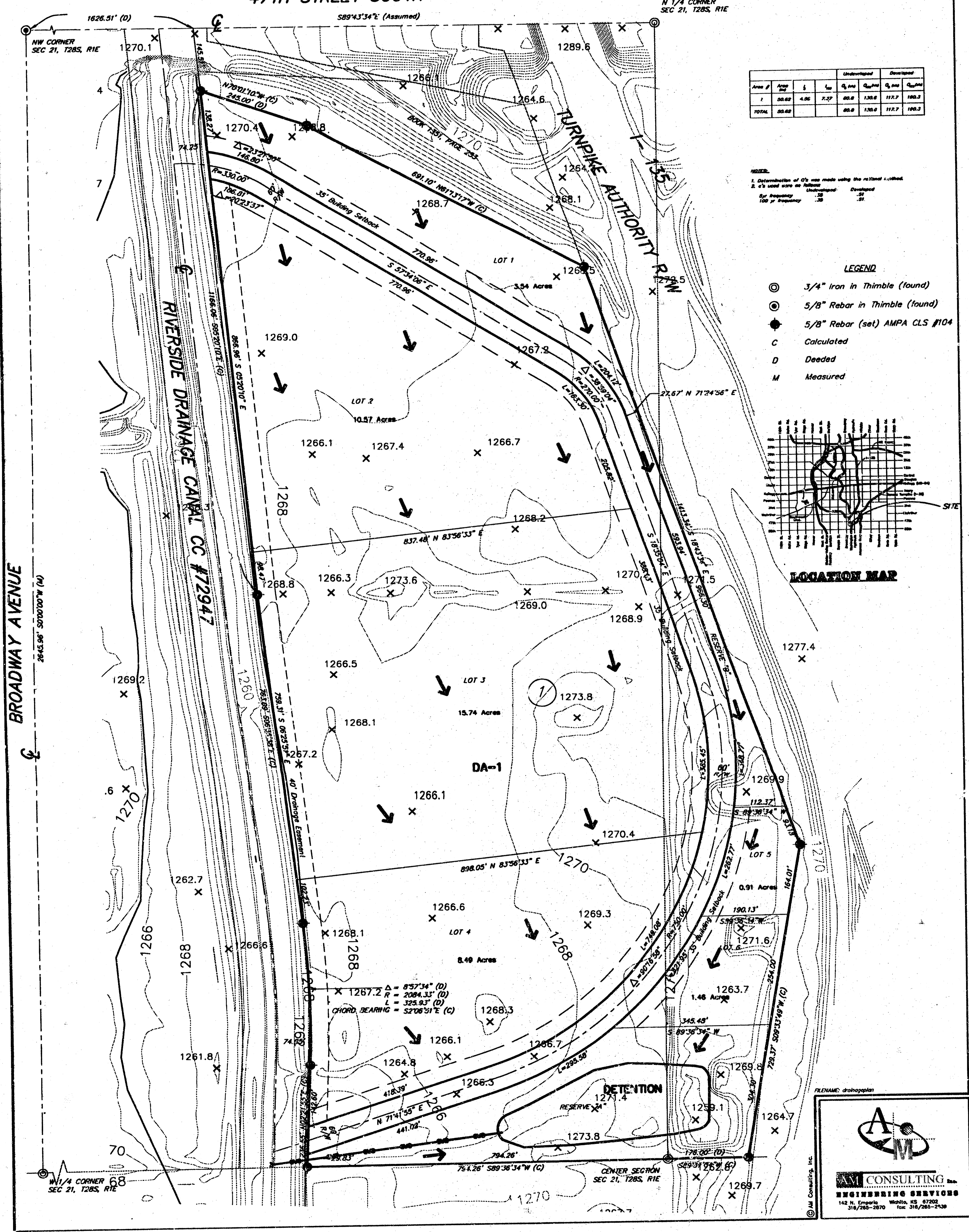


SOUTH TOWN CENTER DRAINAGE PLAN
WICHITA, SEDGWICK COUNTY, KANSAS
 A TRACT OF LAND IN THE NW 1/4, SEC. 21, T28S, R1E



47TH STREET SOUTH



Area #	Area	Length	Width	Perimeter	Area
1	88.82	4.86	7.27	88.8	138.8
2	88.82	88.8	138.8	138.7	198.2
TOTAL	88.82	88.8	138.8	138.7	198.2

NOTES:
 1. Determination of CIP was made using the method outlined.
 2. All work was done in accordance with the following:
 For Preparation: 100%
 For Construction: 100%

- LEGEND**
- ⊙ 3/4" Iron in Thimble (found)
 - ⊙ 5/8" Rebar in Thimble (found)
 - ⊙ 5/8" Rebar (set) AMPA CLS #104
 - C Calculated
 - D Deeded
 - M Measured

