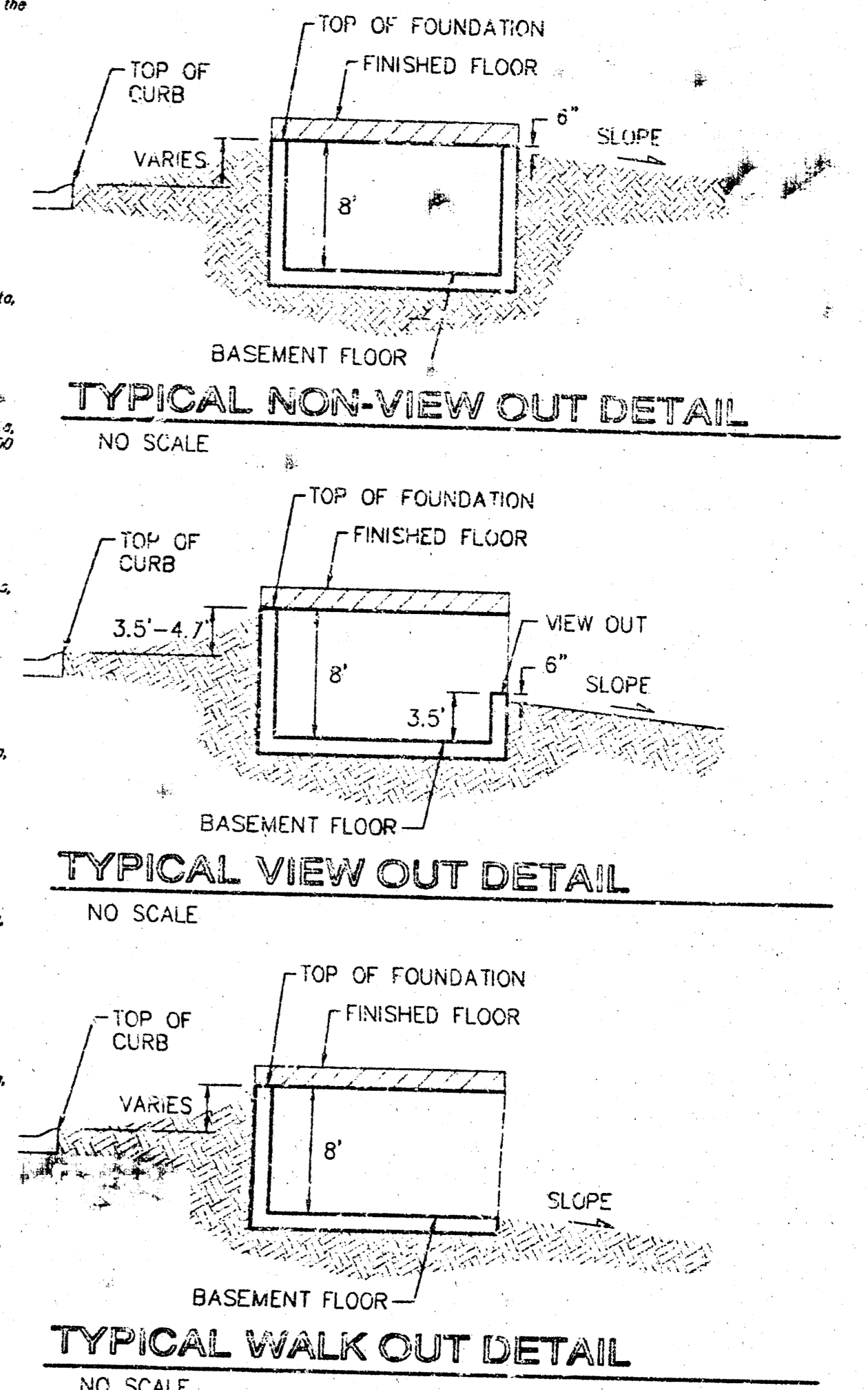


Lot Split Legal Descriptions

- Legal Description "1"
- Legal Description "2"
- Legal Description "3"
- Legal Description "4"
- Legal Description "5"
- Legal Description "6"
- Legal Description "7"
- Legal Description "8"
- Legal Description "9"
- Legal Description "10"
- Legal Description "11"
- Legal Description "12"
- Legal Description "13"
- Legal Description "14"
- Legal Description "15"
- Legal Description "16"
- Legal Description "17"
- Legal Description "18"
- Legal Description "19"
- Legal Description "20"
- Legal Description "21"
- Legal Description "22"
- Legal Description "23"
- Legal Description "24"
- Legal Description "25"
- Legal Description "26"
- Legal Description "27"
- Legal Description "28"
- Legal Description "29"
- Legal Description "30"
- Legal Description "31"
- Legal Description "32"
- Legal Description "33"
- Legal Description "34"
- Legal Description "35"
- Legal Description "36"
- Legal Description "37"
- Legal Description "38"
- Legal Description "39"
- Legal Description "40"
- Legal Description "41"
- Legal Description "42"
- Legal Description "43"
- Legal Description "44"
- Legal Description "45"
- Legal Description "46"
- Legal Description "47"
- Legal Description "48"
- Legal Description "49"
- Legal Description "50"
- Legal Description "51"
- Legal Description "52"
- Legal Description "53"
- Legal Description "54"
- Legal Description "55"
- Legal Description "56"
- Legal Description "57"
- Legal Description "58"
- Legal Description "59"
- Legal Description "60"
- Legal Description "61"
- Legal Description "62"
- Legal Description "63"
- Legal Description "64"
- Legal Description "65"
- Legal Description "66"
- Legal Description "67"
- Legal Description "68"
- Legal Description "69"
- Legal Description "70"
- Legal Description "71"
- Legal Description "72"
- Legal Description "73"
- Legal Description "74"
- Legal Description "75"
- Legal Description "76"
- Legal Description "77"
- Legal Description "78"
- Legal Description "79"
- Legal Description "80"
- Legal Description "81"
- Legal Description "82"
- Legal Description "83"
- Legal Description "84"
- Legal Description "85"
- Legal Description "86"
- Legal Description "87"
- Legal Description "88"
- Legal Description "89"
- Legal Description "90"
- Legal Description "91"
- Legal Description "92"
- Legal Description "93"
- Legal Description "94"
- Legal Description "95"
- Legal Description "96"
- Legal Description "97"
- Legal Description "98"
- Legal Description "99"
- Legal Description "100"



MINIMUM BUILDING PAD ELEVATIONS FOR LOWEST OPENING TO THE STRUCTURES

LOT	BLOCK	ELEVATION CITY DATUM
31-48	A	138.0
34-48	C	138.0

NOTES:
 Proposed Top of Foundation Elevations are Shown on Plans. Contractor to Set Finished Floor Elevations.
 All Street Elevations Shown on Plans are for Top of Curb (Full-Height).
 This Grading Plan is Designed with View-Outs. Elevations Shown at Rear of House (XX.X V.O.)
 Lot dimensions have been omitted on this plan, refer to the recorded plat for this information.
 May Require Extra Deep Foundation

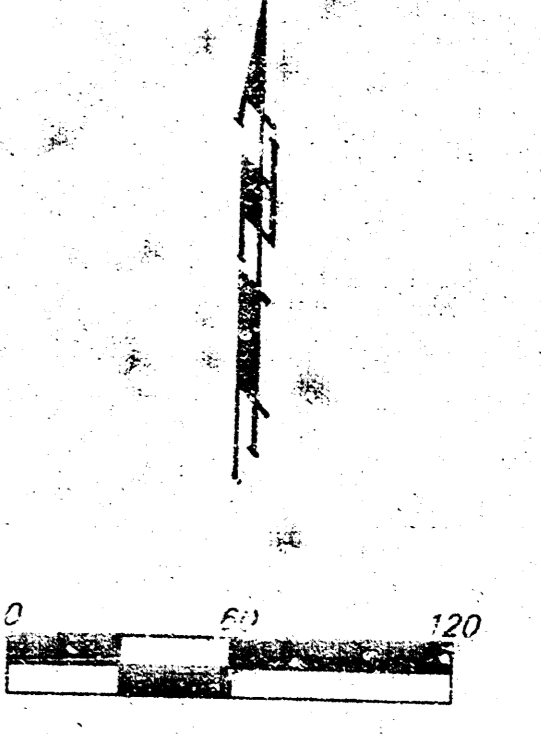
APPROVED DRAINAGE PLAN

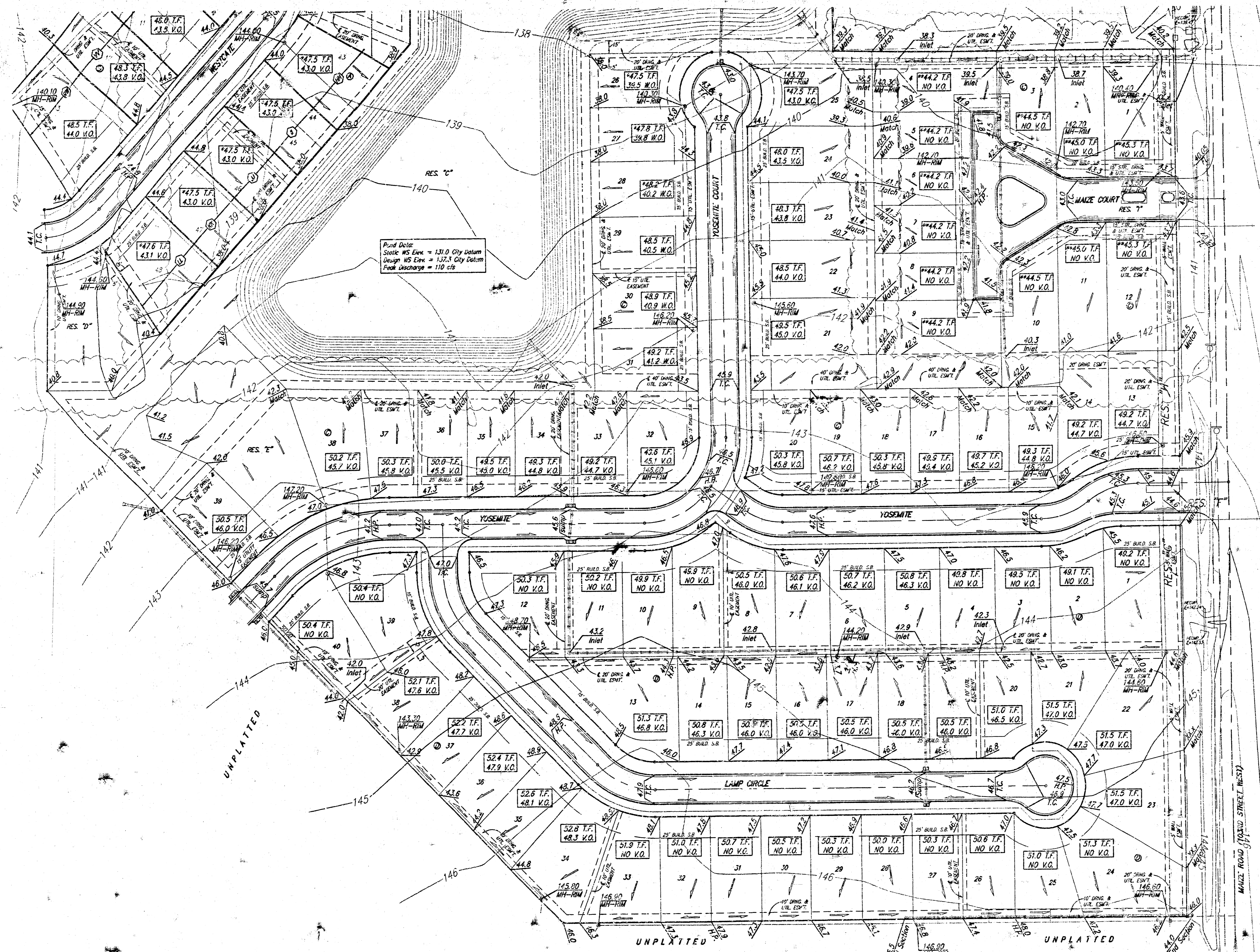
SOUTHERN RIDGE ADDITION GRADING PLAN
 WICHITA, KANSAS
BAUGHMAN COMPANY P.A.
 ENGINEERING, SURVEYING, & PLANNING
 315-26-7871 • WICHITA, KANSAS 67211

PROJECT NUMBER: _____ SHEET: **1** OF **2**

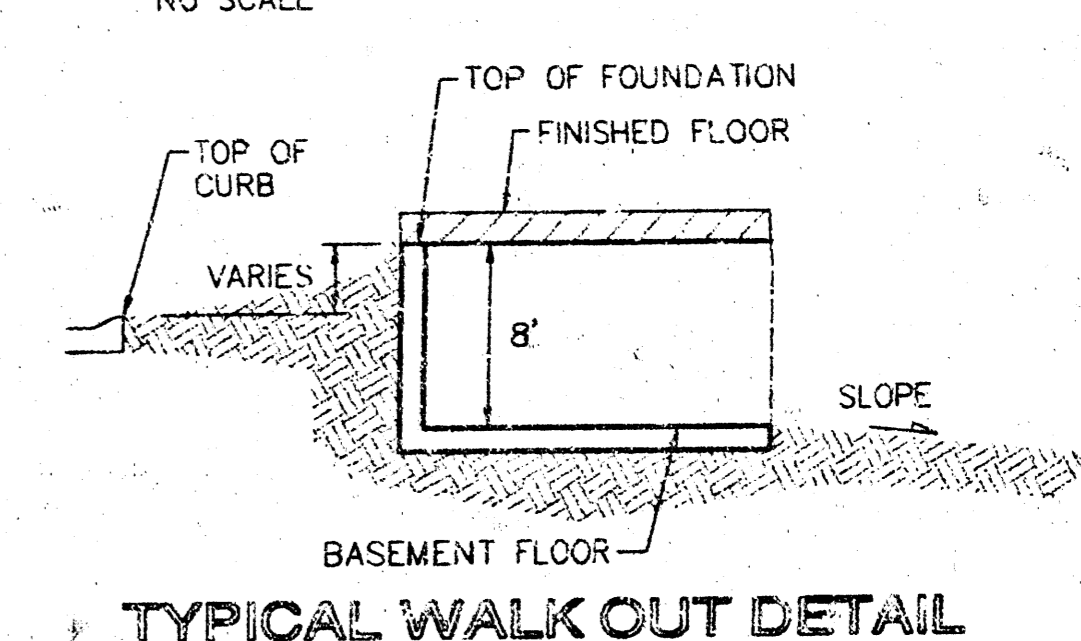
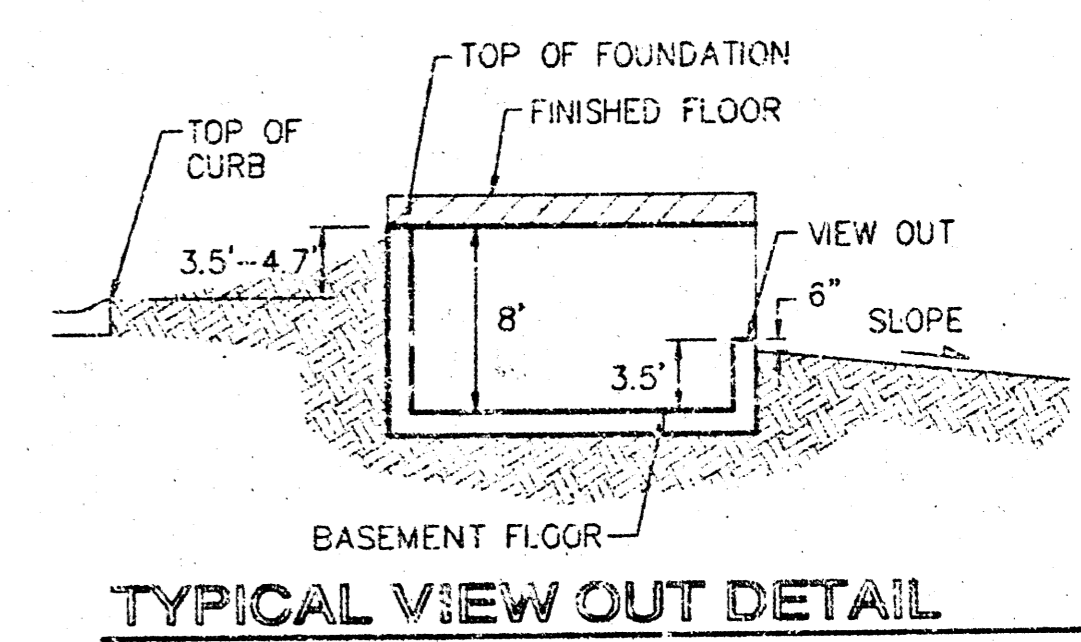
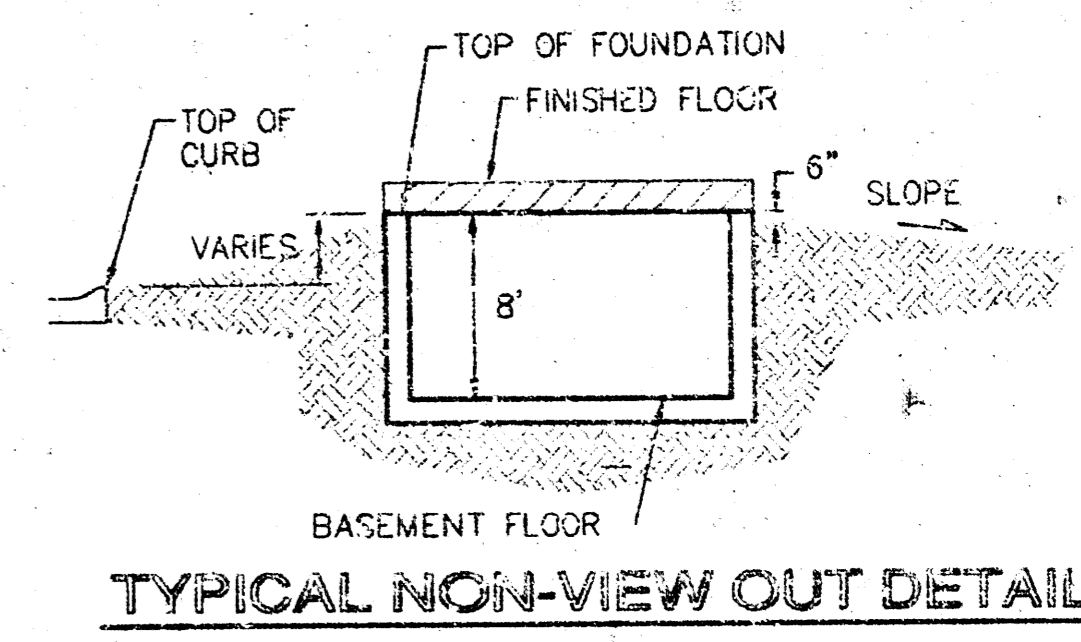
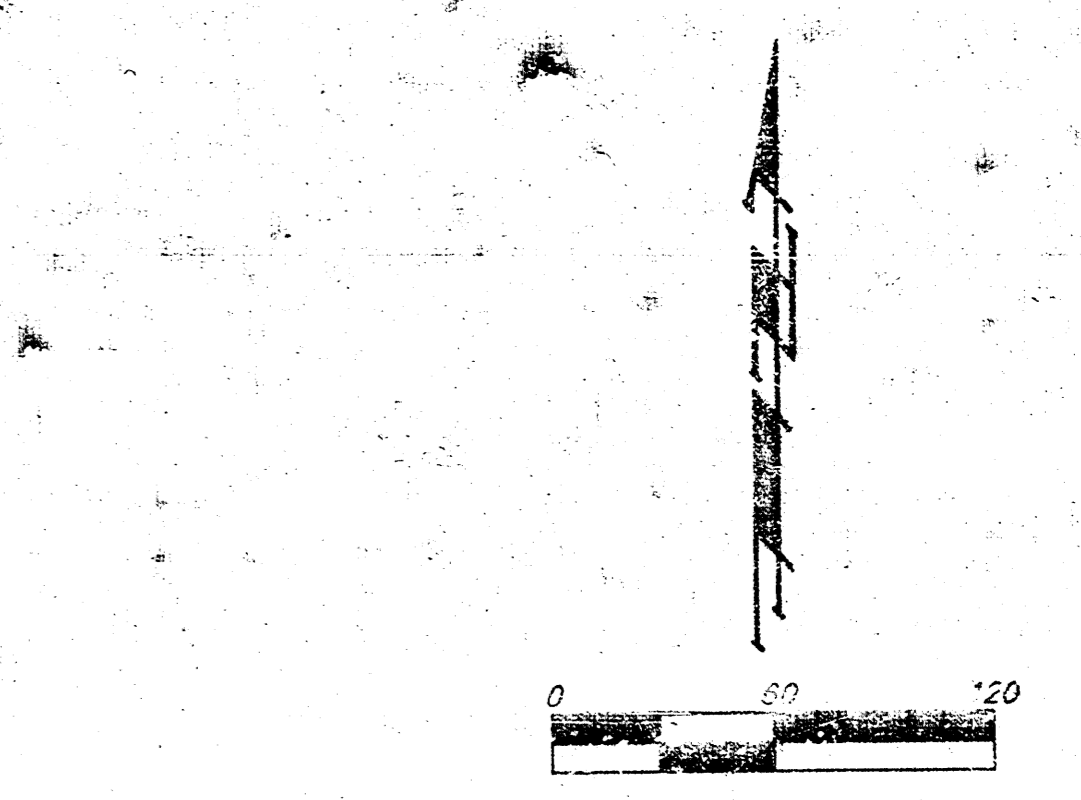
DESIGN: BLC/REG DRAWN: BLC/SMD APPROVED: _____ DATE: 01-02-03 SCALE: 1/8"=1'-0"

Flood Data: Static W.S. Elev. = 131.0 City Datum
 Design WS Elev. = 137.3 City Datum
 Peak Discharge = 116 cfs





Pond Data:
 Static WS Elev. = 131.0 City Datum
 Design WS Elev. = 137.3 City Datum
 Peak Discharge = 110 cfs



MINIMUM BUILDING PAD ELEVATIONS FOR LOWEST OPENING TO THE STRUCTURES

LOT	BLOCK	ELEVATION CITY DATUM
31-48	A	138.0
34-48	C	138.0

BENCHMARK:
 City of Wichita Benchmark Disc - SW Corner of the Intersection of Powers & Santa Fe
 44' South of centerline
 48.8' West of centerline
 12' East of lane
 65' SW of Sec. corner from Elev. = 135.12 City Datum
 1323.52 NGVD29

NOTES:
 Proposed Top of Foundation Elevations Are Shown On Plans. Contractor to Set Finished Floor Elevations.

All Street Elevations Shown on Plans Are for Top of Curb (Full-Height).

This Grading Plan is Designed with View-Outs. Elevations Shown at Rear of House (XXX V.O.)

Lot dimensions have been omitted on this plan, refer to the recorded plat for this information.

* May Require Extra Deep Foundation

** No Basement Service Available

⊙ = L-1 Spill Detention
 Lot Spill Legal Descriptions provided on page 1 of 2 of the Grading plan

SOUTHERN RIDGE ADDITION
GRADING PLAN
 WICHITA, KANSAS

BAUGHMAN COMPANY P.A.
 ENGINEERING, SURVEYING, & PLANNING
 316-262-7271 • 315 ELLIS • WICHITA, KANSAS 67211

Revised 7/23/03 by SMD PER NGW, pad elevations
 Revised 6/20/03 by SMD PER NGW, pad elevations
 Revised 6/4/03 by SMD PER NGW, pad elevations

Revised 5/22/03 by BLC, lot split legals
 Revised 5/6/03 by AEG per NGW
 Revised 16 December 2002 by AEG/BLC
 Revised 11 November 2002

DESIGN	DRAWN	APPROVED	DATE	SCALE
BLC/AEG	BLC/SMD		01-02-03	NOTED