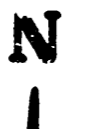
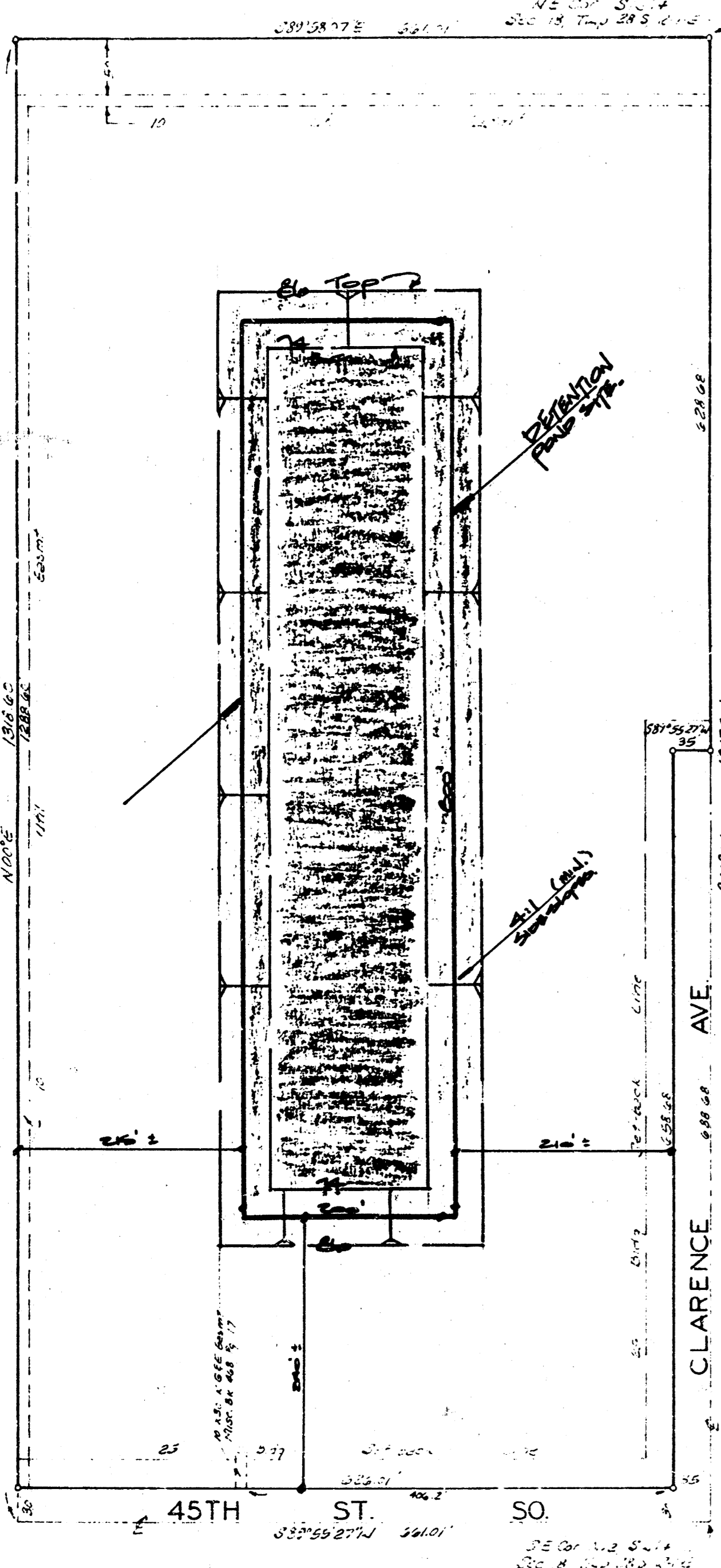


SOUTHLAKE 3RD ADDITION
(DRAINAGE)

SOUTH LAKE 3RD. ADDITION

WICHITA, KANSAS



1" = 100'
0' = 1/16"

This plat of "SOUTH LAKE 3RD. ADDITION", Wichita, Kansas, has been submitted to and approved by the Wichita-Sedgewick County Metropolitan Area Planning Commission, Wichita, Kansas. Dated this ___ day of ___ 198__.

Wichita-Sedgewick County Metropolitan Area Planning Commission.

Robert L. [Signature] Chairman
 [Signature] Secretary

This plat approved and all dedications shown hereon accepted by the Board of Commissioners of the City of Wichita, Kansas, this ___ day of ___ 198__.

[Signature] Mayor
 [Signature] City Clerk

This plat approved and all dedications shown hereon accepted by the Board of Commissioners, Sedgewick County, Kansas, this ___ day of ___ 198__.

[Signature] Chairman
 [Signature] Commissioner
 [Signature] County Clerk

Entered on transfer record this ___ day of ___ 198__.

[Signature] County Clerk

This is to certify that this plat has been filed for record in the office of the Register of Deeds, this ___ day of ___ 198__ at ___ o'clock ___ M., and is duly recorded.

[Signature] Register of Deeds
 [Signature] Deputy

State of Kansas? ss. We, Baughman Company, P.A., Surveyors in aforesaid county and state do hereby certify that we have surveyed and plotted "SOUTH LAKE 3RD. ADDITION", Wichita, Kansas and that the accompanying plat is a true and correct exhibit of the property surveyed, described as the east 30 acres of the N 1/2 of the SW 1/4 of Sec. 18, Twp. 28-S, R-1-E of the 6th P.M., Sedgewick County, Kansas.

Baughman Company, P.A.

[Signature] Surveyor

State of Kansas? ss. We, the undersigned, do hereby certify that we have surveyed the land described in the surveyors certificate to be platted into a lot and streets to be known as "SOUTH LAKE 3RD. ADDITION", Wichita, Kansas. The easements are hereby granted as indicated for the construction and maintenance of all public utilities. The streets are hereby dedicated to and for the use of the public.

[Signature] Notary Public

State of Kansas? ss. The foregoing instrument was acknowledged before me, this ___ day of ___ 198__, by Melvin L. Davis and Barbara L. Davis this wife.

My Appt. Exp. ___ Notary Public

BAUGHMAN COMPANY, P.A.
 SURVEYING & ENGINEERING
 316/262-7271 • 330 LAURA • WICHITA, KANSAS 67211

CONFIRMATION MEMO

PROJECT: SOUTHLAKE 3RD ADDITION
 DATE: 12/3/83
 JOB NO.:
 TO: Chris Breitenstein
 FROM: N. Brent Mouten
 REFERENCE: Final drainage plan.

Final plat is scheduled for subdivision for Dec. 22, 1983.

Proposed building locations and retention pond site are indicated on the plan. The plat will retain all of its storm water runoff within the plat, this includes the major storm flow also. No discharge will be directed to either Clarence on the east or to 45th St. on the south.

Drainage area for the plat is 18.54 acres total. As calculated in the concept plan for this plat, the required storage volume for complete retention of this site is approximately 6 Ac.Ft.

The plat is proposed to be developed with a paved driveway and parking area around the perimeter of the plat as indicated. These paved areas and the roof drains from the apartment sites will be discharged into the pond site at various points thru either pipe and inlets, flumes, or grassed swales. The actual discharge means into the pond will be determined at the time of final site development in the future.

RECEIVED
 DEC 12 1983
 Dept. Of Engineering

Page 1 of 2

BAUGHMAN COMPANY, P.A.
 SURVEYING & ENGINEERING
 316/262-7271 • 330 LAURA • WICHITA, KANSAS 67211

CONFIRMATION MEMO

PROJECT: _____
 DATE: _____
 JOB NO.: _____
 TO: _____
 FROM: _____
 REFERENCE: _____

Pond characteristics - The pond is intended as an amenity to the site, therefore visual aesthetics is important in the design. The pond will be excavated to and at least 6-8 feet below the existing ground water level. This will provide for a clear water surface, discourage cattails and other vegetation from growing from the bottom, and a free infiltration discharge way for the storm runoff to be received into.

Approximate ground water elevation in this area is 78 to 80 elevation. Proposed bottom for the pond will be excavated to an elevation of 74. Assuming water surface is constant at elevation 80 then available capacity could be considered from elevation 80 to 86 which will be the average top of bank of the pond site. Assume a one foot free-board which leaves and elevation of 85 for capacity consideration. Approximate pond dimensions will be 200' x 800' x 5' for volume. Available volume above the water table level = 18 Ac-Ft.

This pond will provide three times the amount of storage required for the major storm flow. These pond dimensions are also indicated on the final plat copy for location. Since the developer is providing this size of volume capacity beyond the required it should preclude the need for any subsurface soil investigation report. This size of pond will adequately supply the necessary capacity with four days after receiving the major storm and also should allow for a fluctuating ground water table.

Page 2 of 2

BAUGHMAN COMPANY, P.A.
 SURVEYING & ENGINEERING
 316/262-7271 • 330 LAURA • WICHITA, KANSAS 67211

CONFIRMATION MEMO

PROJECT: _____
 DATE: _____
 JOB NO.: _____
 TO: _____
 FROM: _____
 REFERENCE: _____

The retention pond site proposed for the Southlake 3rd Addition will be solely the responsibility of the owners for construction and also for the maintenance thereof.

Page 2 of 2