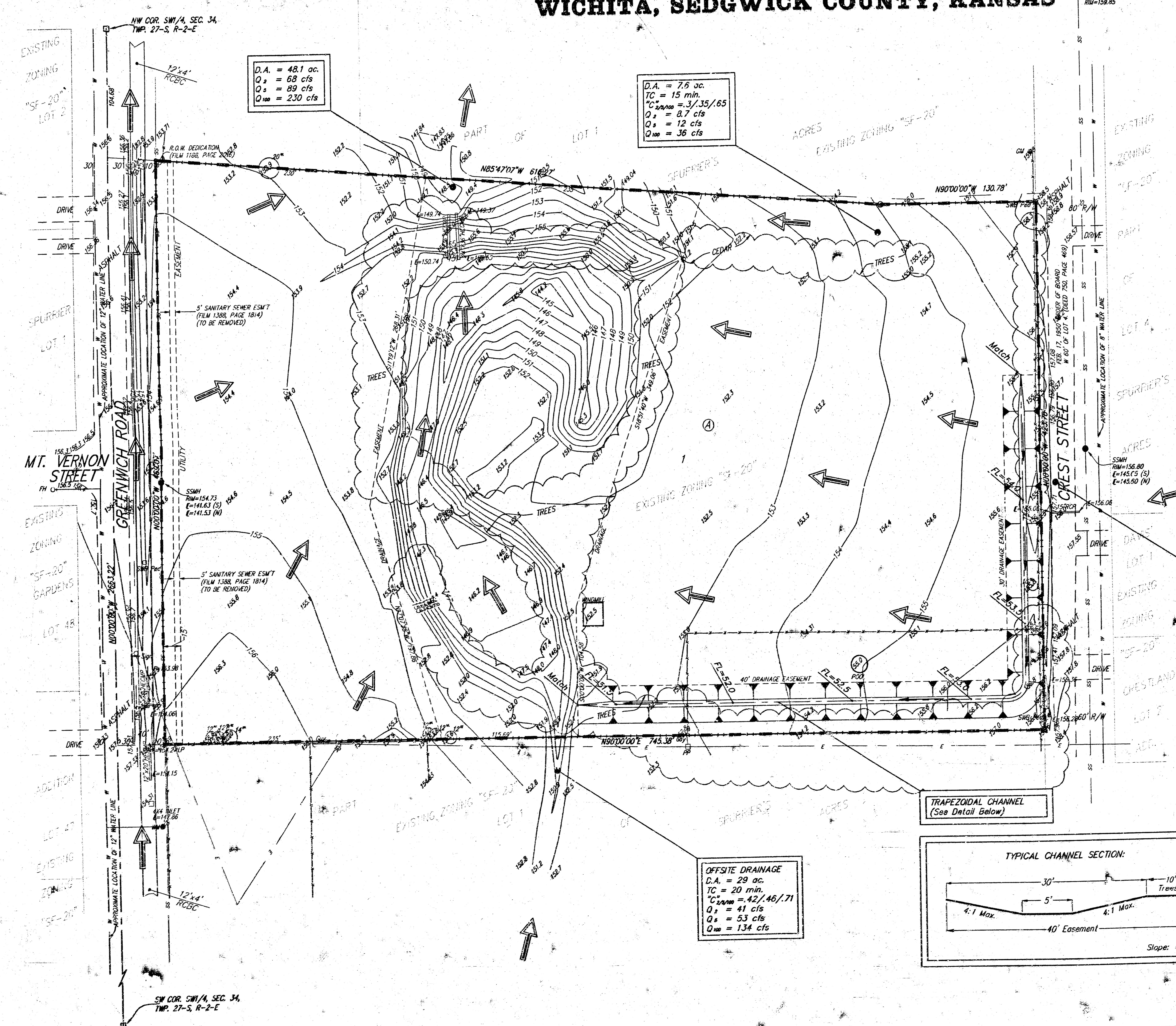


DRAINAGE PLAN

SPURRIER'S SUNSWEPT ACRES 2ND ADDITION

WICHITA, SEDGWICK COUNTY, KANSAS



D.A. = 48.1 ac.
 TC = 15 min.
 $C_{Sump} = 37.35/65$
 $Q_1 = 8.7$ cfs
 $Q_2 = 12$ cfs
 $Q_{100} = 230$ cfs

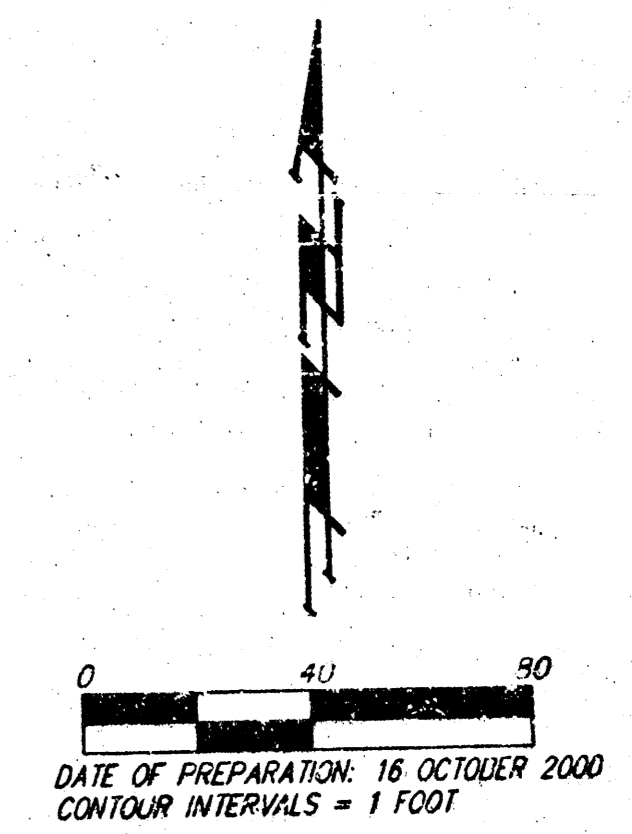
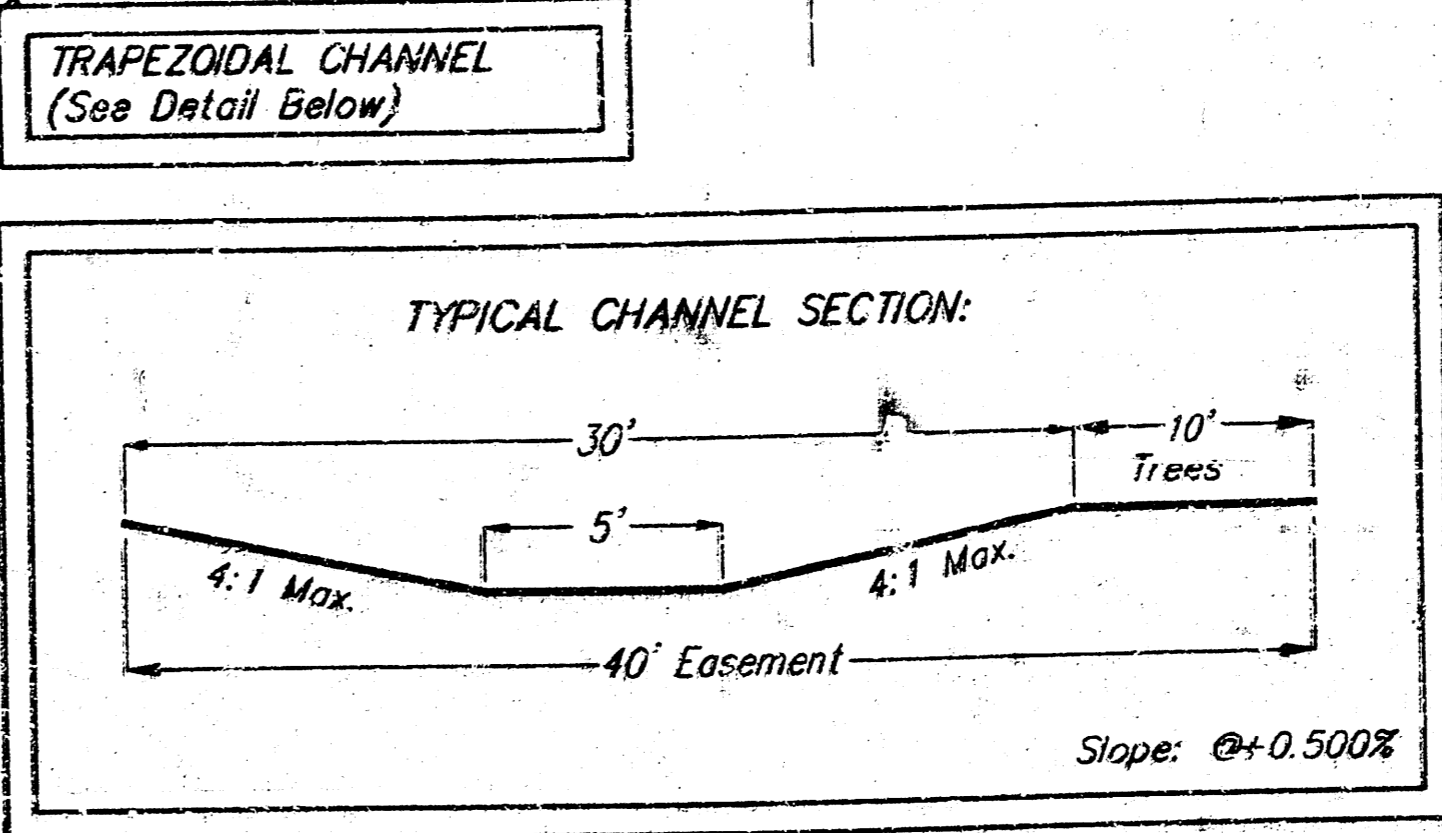
D.A. = 7.6 ac.
 TC = 15 min.
 $C_{Sump} = 37.35/65$
 $Q_1 = 8.7$ cfs
 $Q_2 = 12$ cfs
 $Q_{100} = 36$ cfs

- FH ○ = Fire Hydrant
 - GM ● = Gas Meter
 - GA ○ = Guy Anchor
 - LP ○ = Light Pole
 - PP ○ = Power Pole
 - Sign ○ = Sign
 - SSMH ● = Sanitary Sewer Manhole
 - T ○ = Tree
 - WM ● = Water Meter
 - # = #4 REBAR W/ "BAUGHMAN" CAP (FOUND)
 - = #4 REBAR W/ "BAUGHMAN" CAP (SET)
 - = #4 REBAR W/ "TILSI" CAP (FOUND)
 - = 1" IRON (FOUND)
 - = 1/2" IRON (FOUND)
 - = SECTION CORNER (FOUND)
 - = BOLT (FOUND)
 - = RAILROAD SPIKE (FOUND)
 - = #6 REBAR (FOUND)
- (M) = MEASURED
 (D) = DESCRIBED
 (P) = PLATTED
 (C) = CALCULATED

- WATER LINE
- SOUTHWESTERN BELL
- GAS LINE
- CABLE TV
- FENCE
- ELECTRIC LINE
- SANITARY SEWER

OFFSITE DRAINAGE
 D.A. = 11.5 ac.
 TC = 15 min.
 $C_{Sump} = 42.46/71$
 $Q_1 = 18$ cfs
 $Q_2 = 24$ cfs
 $Q_{100} = 60$ cfs

OFFSITE DRAINAGE
 D.A. = 29 ac.
 TC = 20 min.
 $C_{Sump} = 42.46/71$
 $Q_1 = 41$ cfs
 $Q_2 = 53$ cfs
 $Q_{100} = 134$ cfs



OWNER:
 Felicia A. Herecia
 2023 S. Crest
 Wichita, Ks 67207

BENCHMARK:
 COW disc Greenwich and Mt. Vernon, east
 right of way, northeast corner of double
 4x6' RCBC.

MINIMUM PAD:
 Elevations for the lowest opening to the
 structures shall be 154.00 City Datum.

