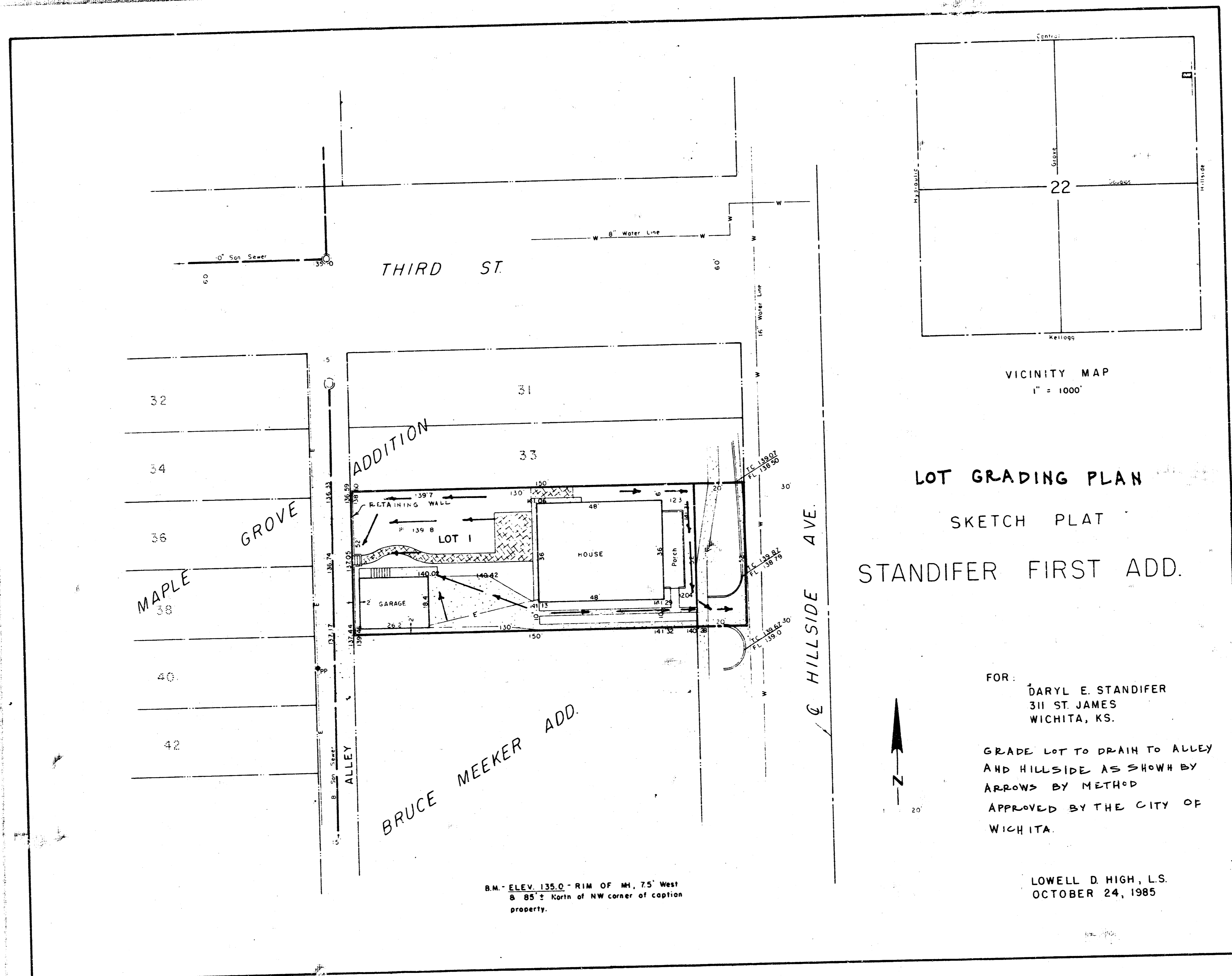


STANDIFER FIRST ADDITION
(Drainage)



VICINITY MAP
1" = 1000'

LOT GRADING PLAN
SKETCH PLAT
STANDIFER FIRST ADD.

FOR: DARYL E. STANDIFER
311 ST. JAMES
WICHITA, KS.

GRADE LOT TO DRAIN TO ALLEY
AND HILLSIDE AS SHOWN BY
ARROWS BY METHOD
APPROVED BY THE CITY OF
WICHITA.

LOWELL D. HIGH, L.S.
OCTOBER 24, 1985

B.M. ELEV. 135.0 - RIM OF M4, 75' West
8.85 ± Corn of NW corner of caption
property.