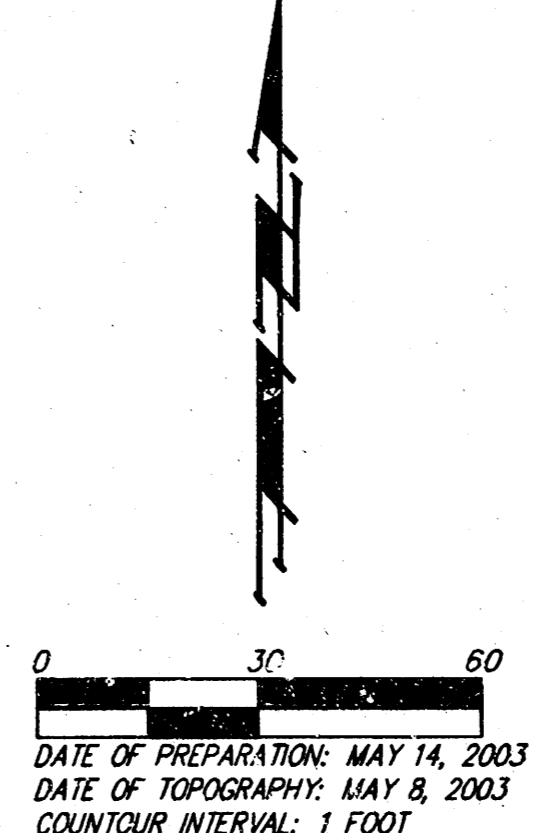
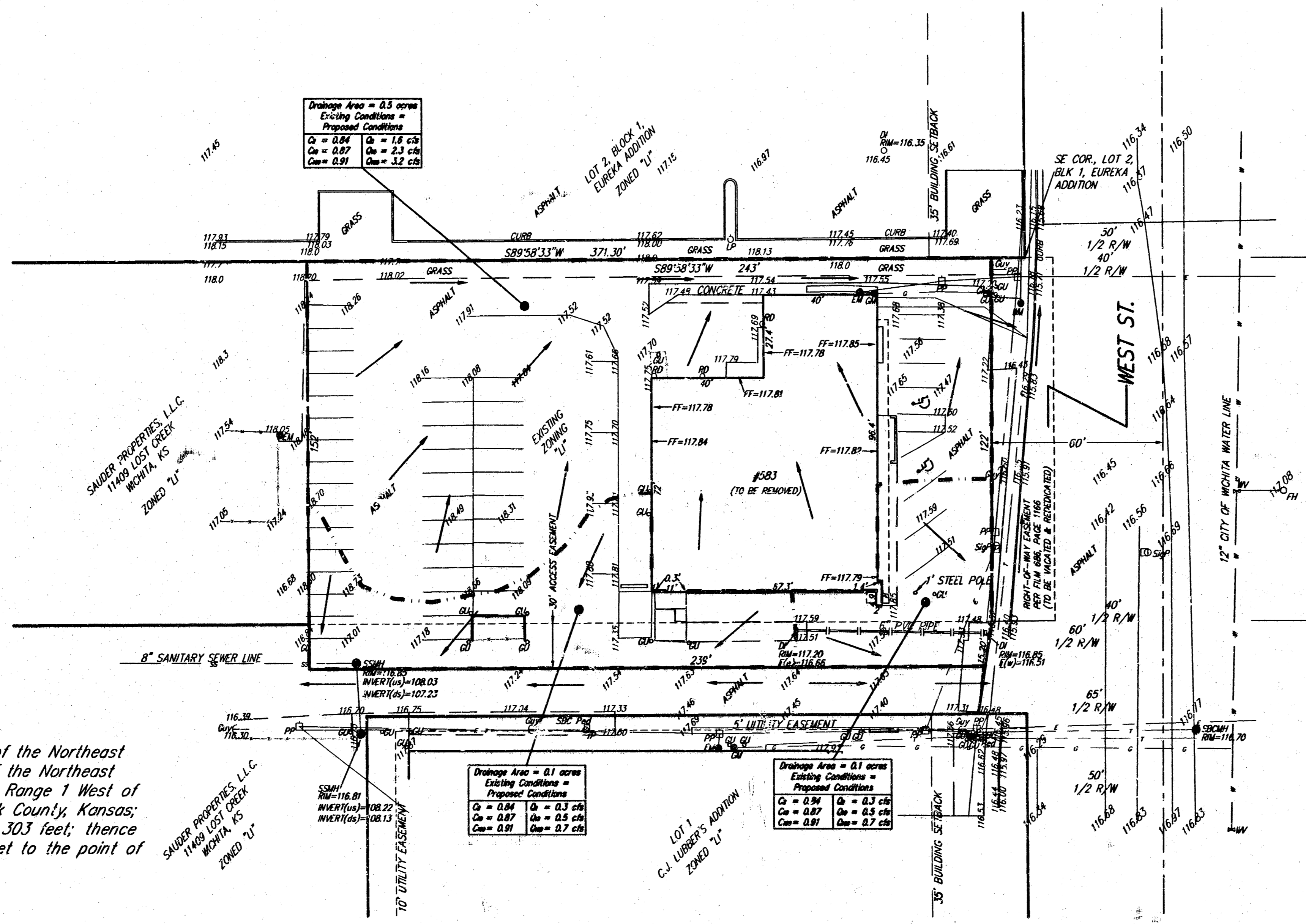


DRAINAGE PLAN STARBUCK'S ADDITION WICHITA, SEDGWICK COUNTY, KANSAS



- DI = Drop Inlet
- EM = Electric Meter
- FM = Fire Hydrant
- GM = Gas Meter
- GP = Guard Post (Ballard)
- GA = Guy Anchor
- LP = Light Pole
- PP = Power Pole
- RD = Roof Drain
- SP = Signal Pole
- SSM = Sanitary Sewer Manhole
- SSM = Sanitary Sewer Manhole
- SSM = Sanitary Sewer Manhole
- SP = Signal Pole
- TP = Telephone Pole
- WM = Water Meter
- WV = Water Valve

OWNER:
V.E. Lygrisse, Trust
86.39 Meadow Pass Ct.
Wichita, KS

LEGAL DESCRIPTION:
Beginning at the Southeast corner of the Northeast Quarter of the Southeast Quarter of the Northeast Quarter of Section 26, Township 27, Range 1 West of the Sixth Principal Meridian, Sedgwick County, Kansas; thence north 122 feet; thence west 303 feet; thence south 122 feet; thence east 303 feet to the point of beginning.

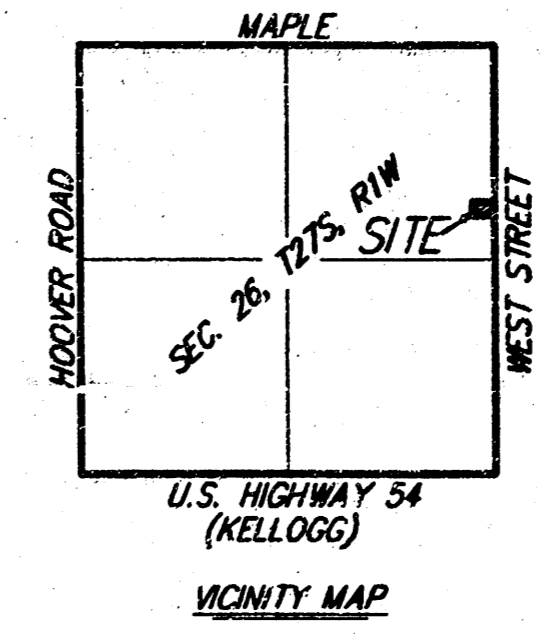
BENCHMARK:
West Street and Kellogg
City of Wichita Benchmark. East side of railroad crossing signal base.

46.80 ft. (14.265 m) West of centerline
111.90 ft. (34.107 m) South of centerline
18.10 ft. (5.517 m) West of centerline of south bound West Street

Elev.=119.12 City Datum
1306.52 N.G.V.D.29

SITE BENCHMARK:
Railroad Spike in 2nd Powerpole West of West Street.

Elev.=118.38 City Datum
1305.73 N.G.V.D.29



MAY 23, 2003

BAUGHMAN COMPANY P. A.
ENGINEERING, SURVEYING, & PLANNING
316-262-7271 • 315 ELLIS • WICHITA, KANSAS 67211