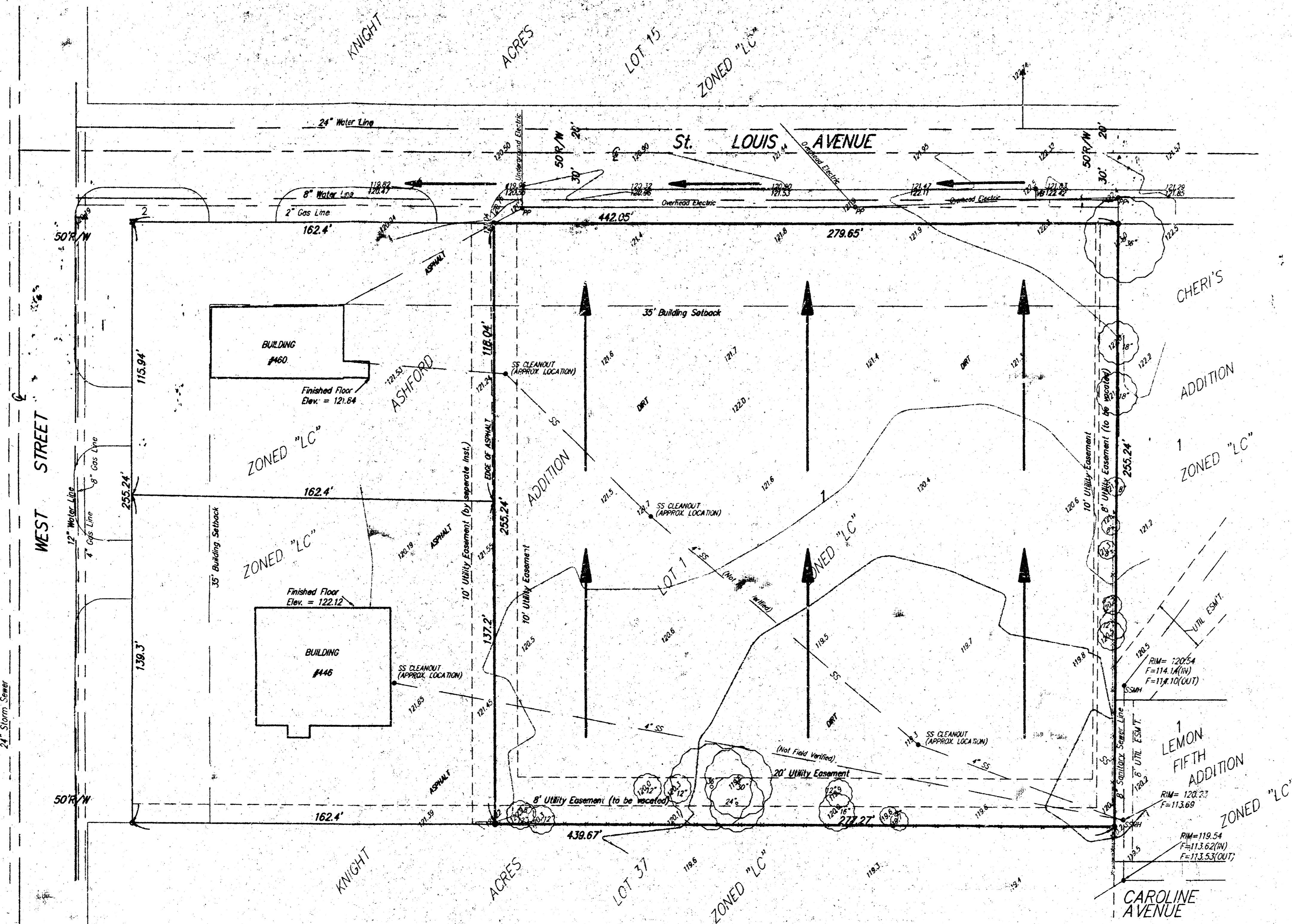


DRAINAGE PLAN STEEBY ADDITION WICHITA, SEDGWICK COUNTY, KANSAS



LEGEND

- = #4 Rebar w/ Baughman Cap (Set)
- = 1/2" Iron Pipe (Found)
- ⊕ = Valve Box
- ⊞ = Sanitary Sewer Man Hole
- ⊞ = Power Pole
- △ = Fire Hydrant

LEGAL DESCRIPTION

Lot 1, Ashford Addition, Wichita, Kansas
Except the west 162.4 feet thereof.

BENCHMARK

□ Cut top of curb adj. to SE
Corner McPherson Addition.
Elev. = 119.89

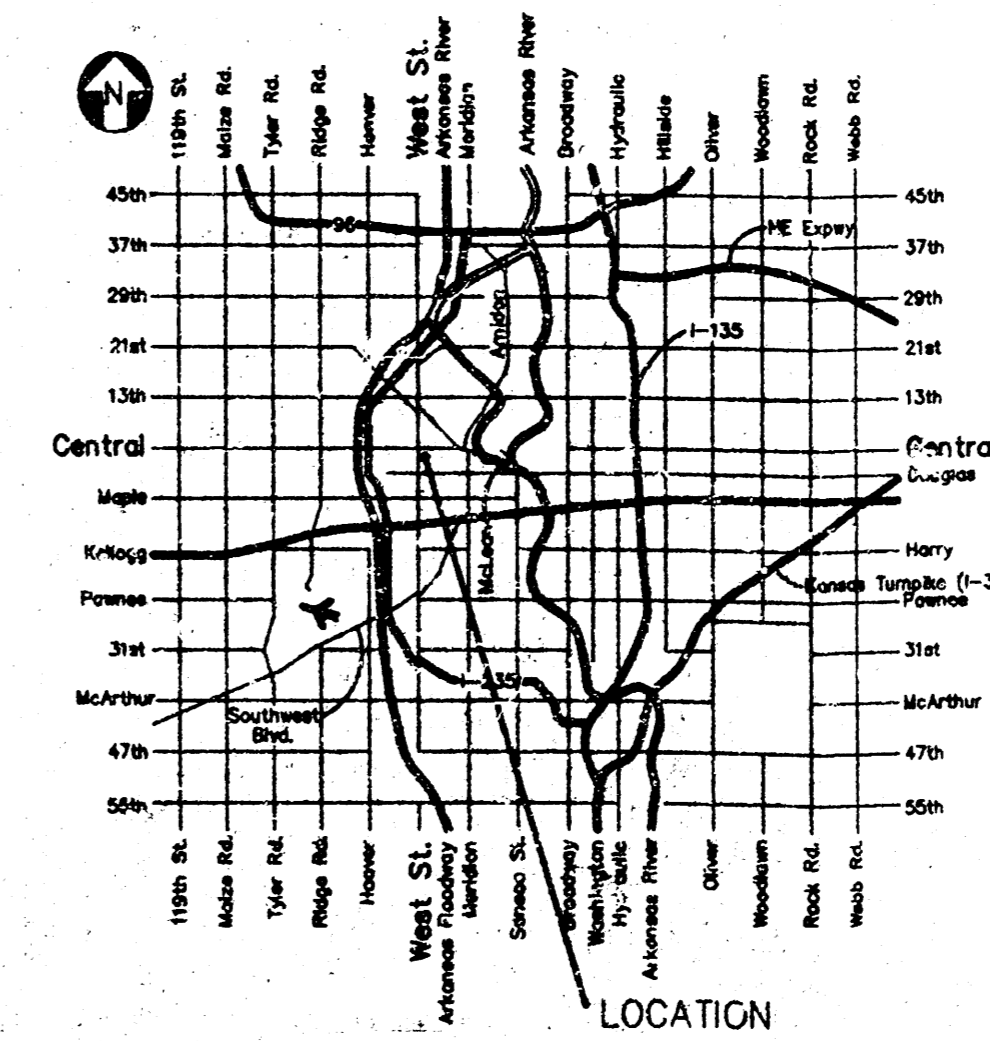
OWNER

Carolyn G. Steeby, Sherman K. Steeby, John A. Steeby
Attn: Carolyn G. Steeby
801 N. Young
Wichita, KS, 67212
(316) 945-7790

DRAINAGE AREA = 1.64 Ac.
 $C = 0.60$
 $Q_5 = 4.5 \text{ cfs}$
 $Q_{100} = 7.3 \text{ cfs}$

NOTE: The proposed drainage plan provided herein is a generally defined plan to follow for design. It is recognized and assumed that upon the final design of street and storm sewer improvements within this plat that the designer will modify or alter the general drainage plan as necessary in order to implement the installation of the improvements to obtain the most economical design and construction possible.

NOTE: APPLICANT TO SUPPLY PRIVATE SANITARY SEWER SERVICE LINE AGREEMENT FOR SERVICE TO ADJACENT PROPERTIES.



VICINITY MAP