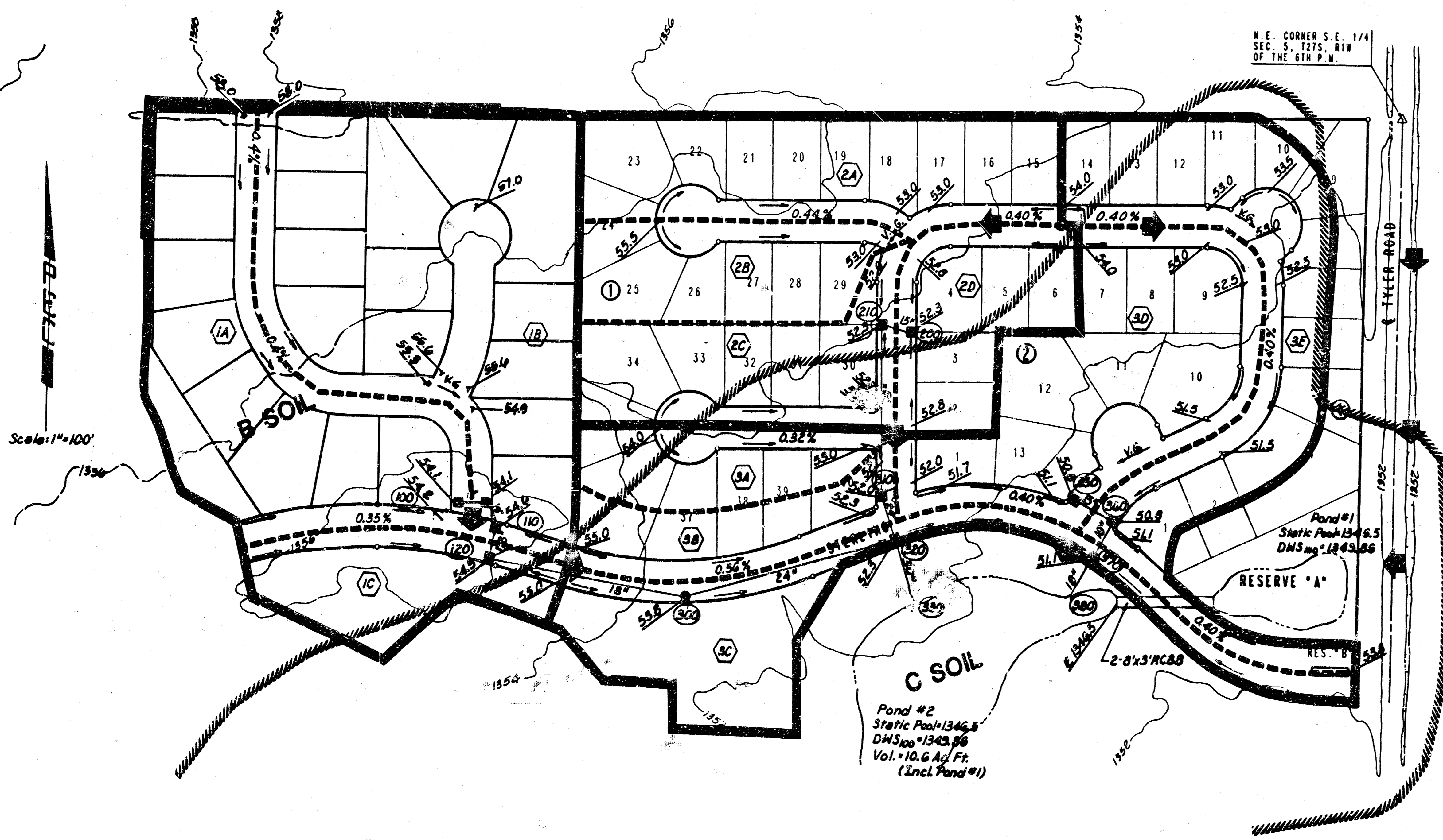


STERLING FARMS 2ND ADDITION & 4TH ADD. TO WICHITA, SEDGWICK COUNTY, KANSAS



DA = 40 Ac.
CN = 71
Q₁₀₀ = 107 cfs
Lag = 0.6 hrs.

- Drainage Basin Boundary
- - - Drainage Sub-Basin Boundary
- |||| Hydrologic Soil Group Boundary
- ⊙ Drainage Basin Number
- ⊙ Storm Sewer Node No.
- 0.4' Minor Storm Flow & Street Grade
- ➔ Major Storm Flow
- Proposed SHS & Inlet
- Proposed SHS Manhole
- V.G. Valley Gutter
- 51.5 Top of Curb Elev. (Add 1300 for HSL)

DA = 53 Ac.
CN = 63
Q₁₀₀ = 163 cfs
Lag = 0.4 hr.

Notes: All streets to have 6 1/2" Combined
Curb & Gutter.
Minimum Pad Elev. Lots 1-9 1352.0 MSL
Block 1, 2nd. Add. 104.0 City
Drainage Computations Previously
Submitted for Sterling Farms 2nd. Add.

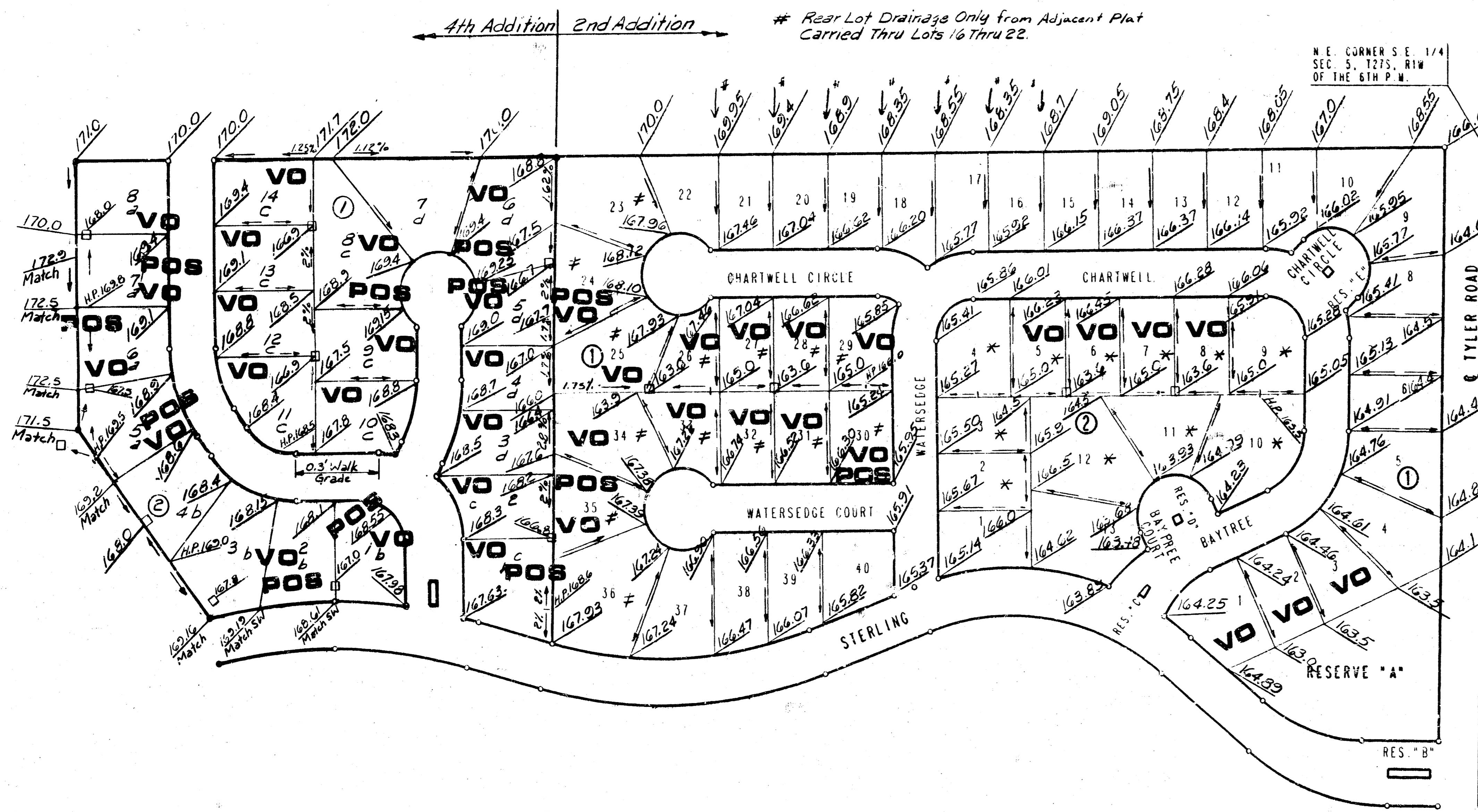


B.M. - Standard City B.M. Disc 38 Ft. West &
30 Ft. South of & Intersection of
21st St. N. & Tyler Rd. Elev. = 1357.35 MSL
169.95 City
B.M. - "T" Post located 26 Ft. South of Northeast
Corner Lot 21, Block G, Sterling Farms
Addition. Elev. = 1354.33 MSL
167.53 City

1- Revised 4-11-04 4th Add.

102 'A'
DRAINAGE PLAN

STERLING FARMS 2ND & 4th ADDITIONS TO WICHITA, SEDGWICK COUNTY, KANSAS



Note: Sterling Farms 4th Addition
Rear Yard Drainage to be
Carried via a Private Storm
Water Sewer System to be
Maintained by the Homeowner's
Association.

SCALE: 1"=100'
o = IRON SET

B.M. - STANDARD CITY B.M. DISC 38 FT. WEST AND
90 FT. SOUTH OF CENTERLINE INTERSECTION
OF 21ST STREET NORTH AND TYLER ROAD
ELEV. = 169.95 CITY DATUM

ALL BUILDING SETBACK LINES ARE 20'
UNLESS NOTED OTHERWISE.

FOR ADDITIONAL SETBACKS SEE C.U.P. DP-178.

MINIMUM PAD ELEVATION (LOWEST OPENING)
FOR LOTS 1 THROUGH 4, BLOCK 1, SHALL BE
ELEVATION 1352.0 M.S.L. OR ELEVATION
164.8 CITY DATUM

Minimum Pad Elev. (Lowest Opening) (2nd Add.)
- 167.0
* - 166.5

VO - Viewout
POS VO - Possibly Viewout

Minimum Pad Elev. (Lowest Opening) (4th Add.)
a - 170.0 or Higher
b - Above Top of Sidewalk along Sterling
c - 163.0 or Higher
d - 167.0

**APPROVED
DRAINAGE PLAN**

Revised 8/12/94
Revised 10/22/93

DETAILED DRAINAGE PLAN