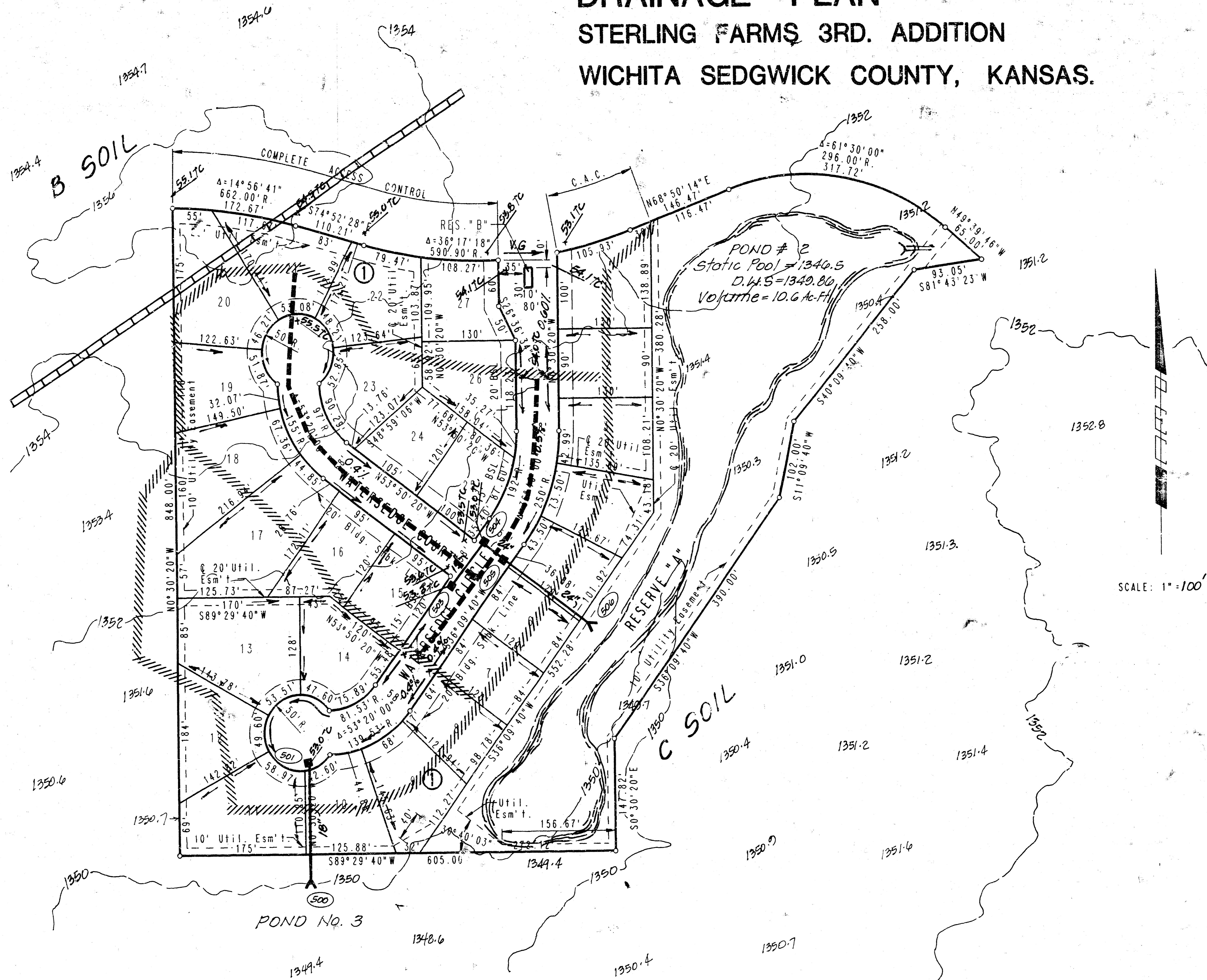


DRAINAGE PLAN 4-12-93

STERLING FARMS 3RD. ADDITION

WICHITA SEDGWICK COUNTY, KANSAS.



LEGEND

- Drainage Basin Boundary
- Drainage Sub-Basin Boundary
- Hydrologic Soil Group Boundary

- Storm Sewer Node No.
- 0.4% Minor Storm Flow & Street Grade
- Major Storm Flow
- Proposed SWS* & Inlet
- Proposed SWS Manhole
- V.G. Valley Gutter
- E.L.S. Top of Curb Elev. (At 1200' & West)

B.M. - Standard City B.M. Disc 38 Ft. West & 90 Ft. South of @ intersection of 21st St. N. & Tyler Rd. Elev. = 1357.35 MSL
163.95 City

B.M. - "T" Post located 26 Ft. South of Northeast Corner Lot 21, Block G, Sterling Farms Addition. Elev. = 1354.99 MSL
167.59 City

Minimum Pad Elevation (Lowest opening) for Lots 1 through 11, Block 1, Shall be Elev. 1351 m.s.l. = 163.6 City Datum.

