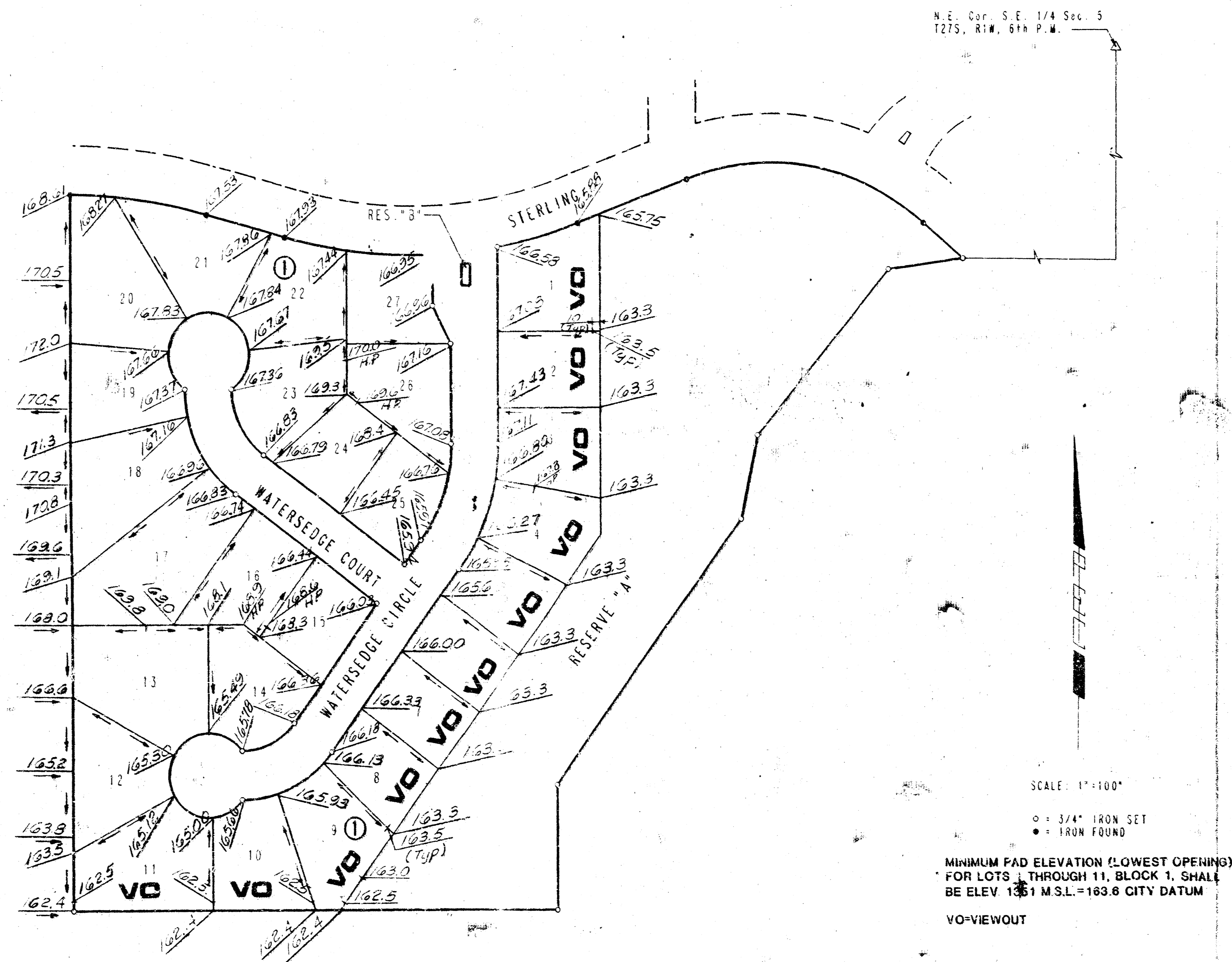


# STERLING FARMS 3RD ADDITION TO WICHITA, SEDGWICK COUNTY, KANSAS



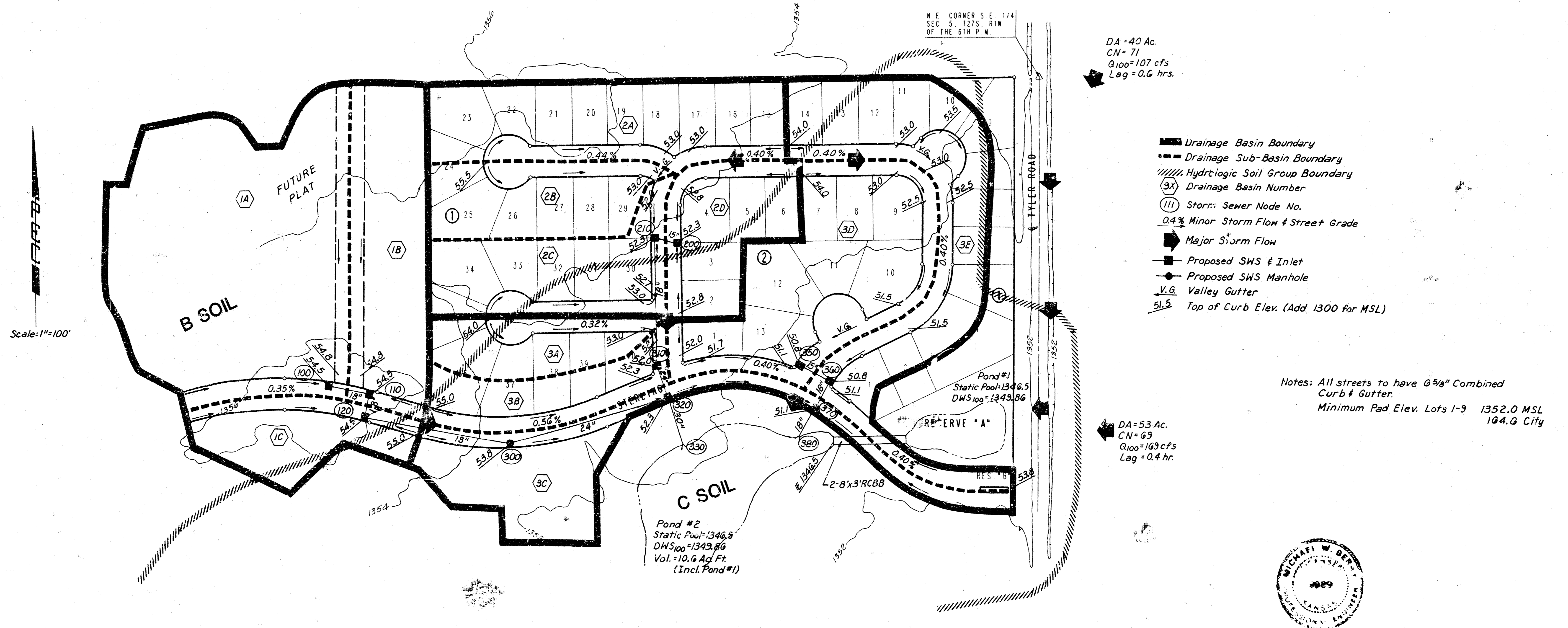
**APPROVED  
DRAINAGE PLAN**

*Revised 6/21/93*

**DETAILED DRAINAGE PLAN**

192 B

# STERLING FARMS 2ND ADDITION TO WICHITA, SEDGWICK COUNTY, KANSAS



Scale: 1"=100'

DA = 40 Ac.  
CN = 71  
Q<sub>100</sub> = 107 cfs  
Lag = 0.6 hrs.

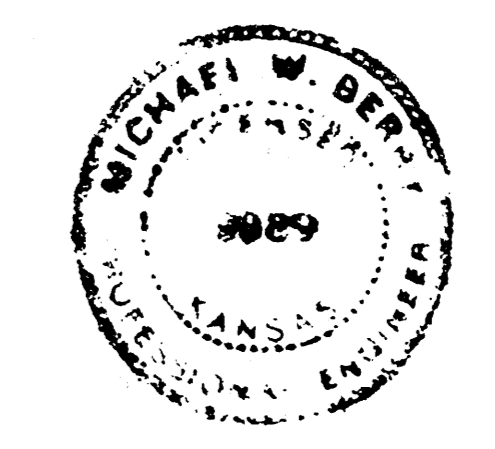
- Drainage Basin Boundary
- - - Drainage Sub-Basin Boundary
- ////// Hydrologic Soil Group Boundary
- (3x) Drainage Basin Number
- (111) Storm Sewer Node No.
- 0.4% Minor Storm Flow & Street Grade
- ➔ Major Storm Flow
- Proposed SWS & Inlet
- Proposed SWS Manhole
- V.G. Valley Gutter
- 51.5 Top of Curb Elev. (Add 1300 for MSL)

Notes: All streets to have @ 5/8" Combined  
Curb & Gutter.  
Minimum Pad Elev. Lots 1-9 1352.0 MSL  
104.0 City

DA = 53 Ac.  
CN = 69  
Q<sub>100</sub> = 163 cfs  
Lag = 0.4 hr.

Pond #2  
Static Pool = 1346.5  
DN<sub>S100</sub> = 1343.86  
Vol. = 10.6 Ac Ft.  
(Incl. Pond #1)

Pond #1  
Static Pool = 1346.5  
DN<sub>S100</sub> = 1349.86



B.M. - Standard City B.M. Disc 38 Ft. West &  
90 Ft. South of E. intersection of  
21<sup>st</sup> St. N. & Tyler Rd. Elev. = 1357.35 MSL  
169.95 City

B.M. - "T" Post located 26 Ft. South of Northeast  
Corner Lot 21, Block G, Sterling Farms  
Addition. Elev. = 1354.99 MSL  
167.59 City