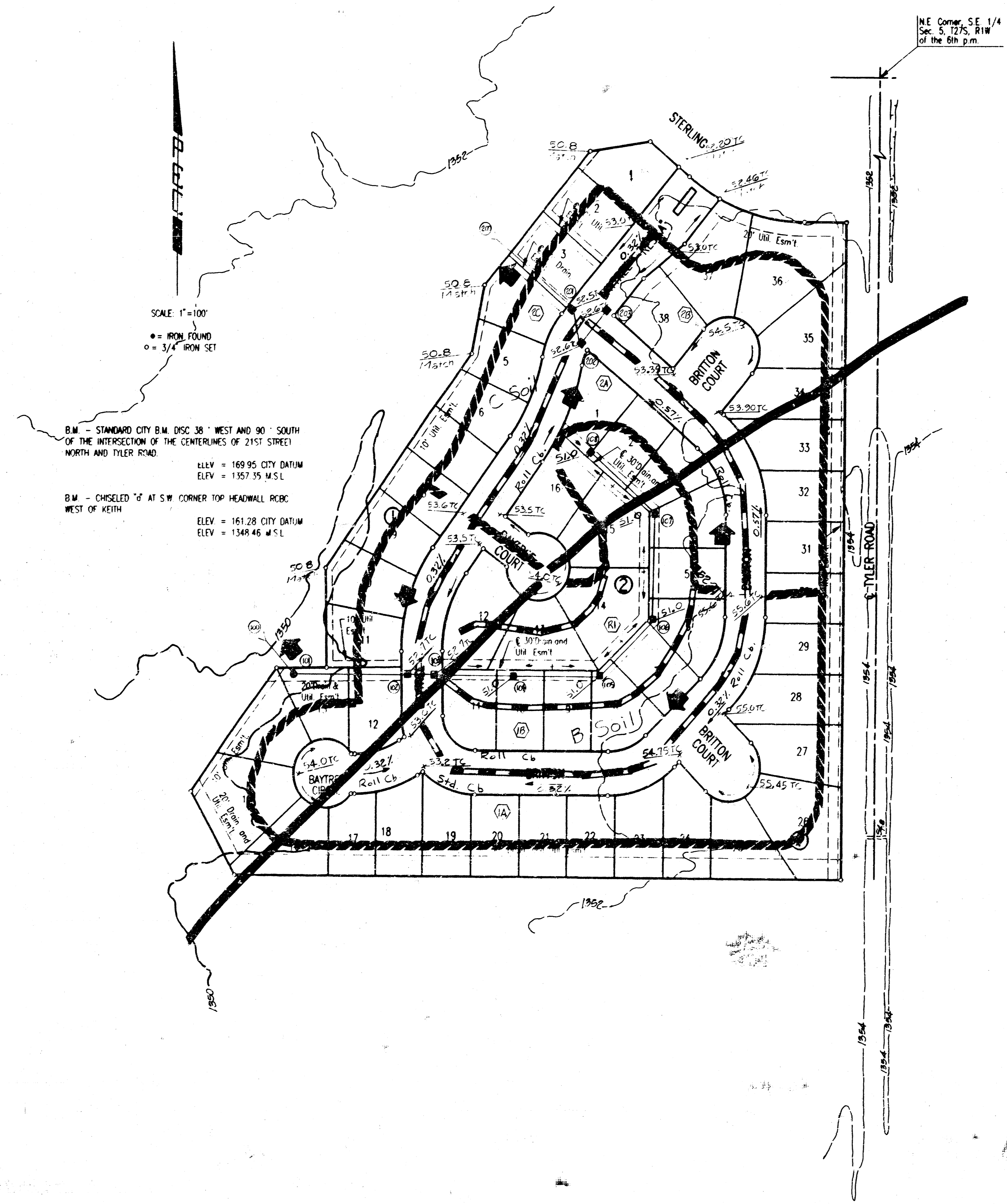


STERLING FARMS 6TH ADDITION TO WICHITA, SEDGWICK COUNTY, KANSAS DRAINAGE PLAN



SCALE 1"=100'
 ● = IRON FOUND
 ○ = 3/4" IRON SET

B.M. - STANDARD CITY B.M. DISC 38" WEST AND 90" SOUTH
 OF THE INTERSECTION OF THE CENTERLINES OF 21ST STREET
 NORTH AND TYLER ROAD
 ELEV. = 169.95 CITY DATUM
 ELEV. = 1357.35 M.S.L.

B.M. - CHISELED "I" AT S.W. CORNER TOP HEADWALL RC&C
 WEST OF KEITH
 ELEV. = 161.28 CITY DATUM
 ELEV. = 1348.46 M.S.L.

NE Corner SE 1/4
 Sec. 5, T27S, R1W
 of the 6th p.m.

LEGEND

- Soil Type Boundary
- Minor Drainage Basin Boundary
- Major Drainage Basin Boundary
- Top of Curb Elev.
- Inlet
- Manhole
- Basin Designation
- Node Number
- Minor Flow
- Major Flow

Note: Elevations Shown are in M.S.L.

as shown on 95771 (plan) app
 date plotted 5/16/95
 drawn by JMC/MLC

5-22-95

255

STERLING FARMS 6TH ADDITION TO WICHITA, SEDGWICK COUNTY, KANSAS FOUR CORNER LOT GRADING



SCALE: 1"=100'

- = IRON FOUND
- = 3/4" IRON SET

BSL = BUILDING SETBACK LINE
CAC = COMPLETE ACCESS CONTROL

FOR ADDITIONAL BUILDING SETBACKS SEE C.U.P. DP-178

B.M. - STANDARD CITY B.M. DISC 38" WEST AND 90" SOUTH OF THE INTERSECTION OF THE CENTERLINES OF 21ST STREET NORTH AND TYLER ROAD.

ELEV. = 169.95 CITY DATUM
ELEV. = 1357.35 M.S.L.

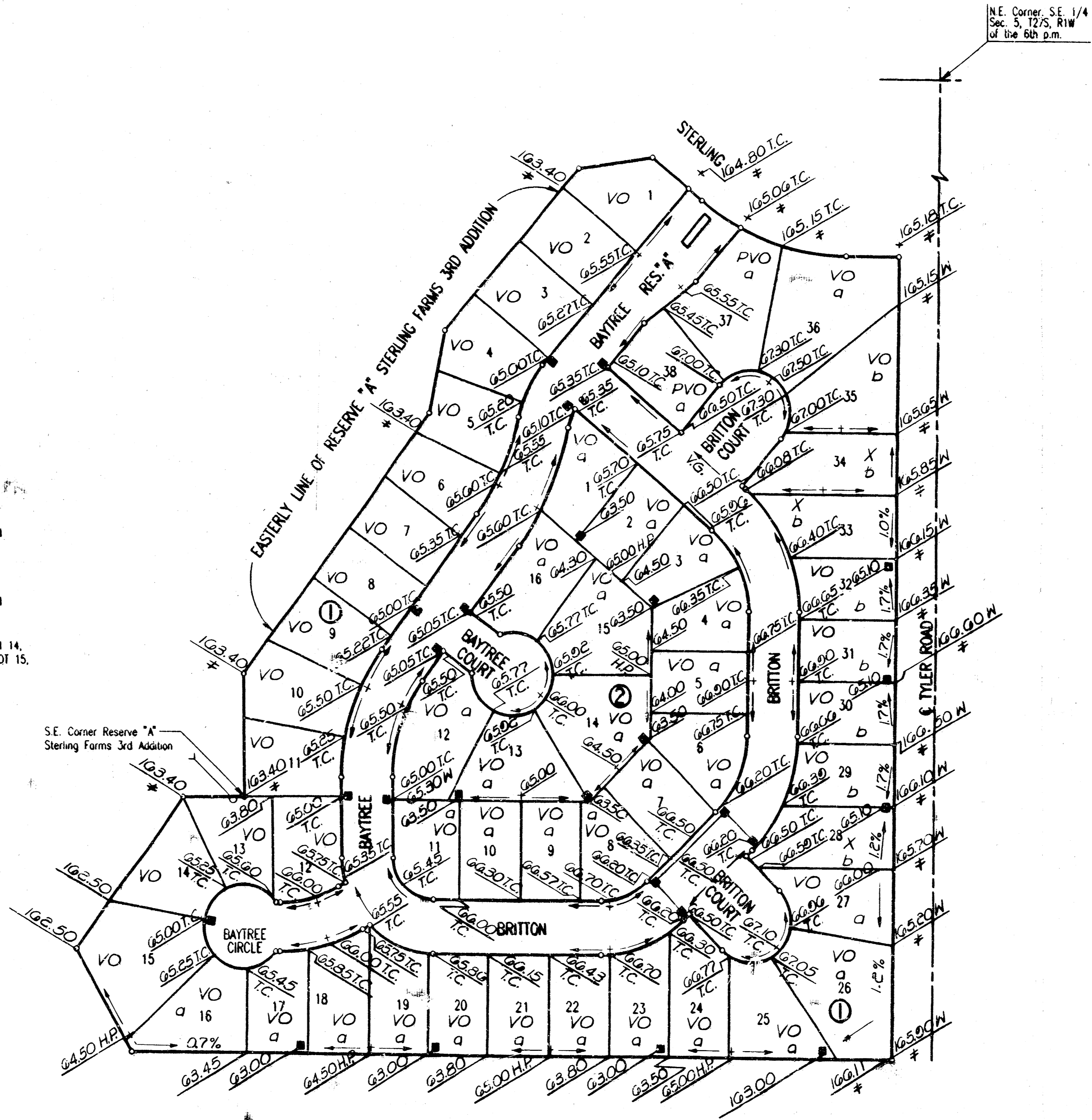
B.M. - CHISELED "G" AT S.W. CORNER TOP HEADWALL HCBC WEST OF KEITH.

ELEV. = 161.28 CITY DATUM
ELEV. = 1348.46 M.S.L.

MINIMUM PAD ELEVATION (LOWEST OPENING) FOR LOTS 1 THROUGH 14, BLOCK 1, SHALL BE ELEV. 1351 M.S.L.=163.6 CITY DATUM AND LOT 15, BLOCK 1, SHALL BE ELEV. 1350 M.S.L.=162.6 CITY DATUM

LEGEND

- H.P. High Point
- # Match Existing
- T.C. Top of Curb Elevation
- W Walk Grade Elevation
- VO View Out Basement Lot
- PVO Possible View Out Basement Lot
- X No View Out Basement Lot
- V.G. Valley Gutter
- a Low Opening = 166.0
- b Low Opening = 167.0



N.E. Corner, SE 1/4
Sec. 3, 12th R1W
of the 6th p.m.

APPROVED
DRAINAGE PLAN

11/17/2004
 11/17/2004
 11/17/2004