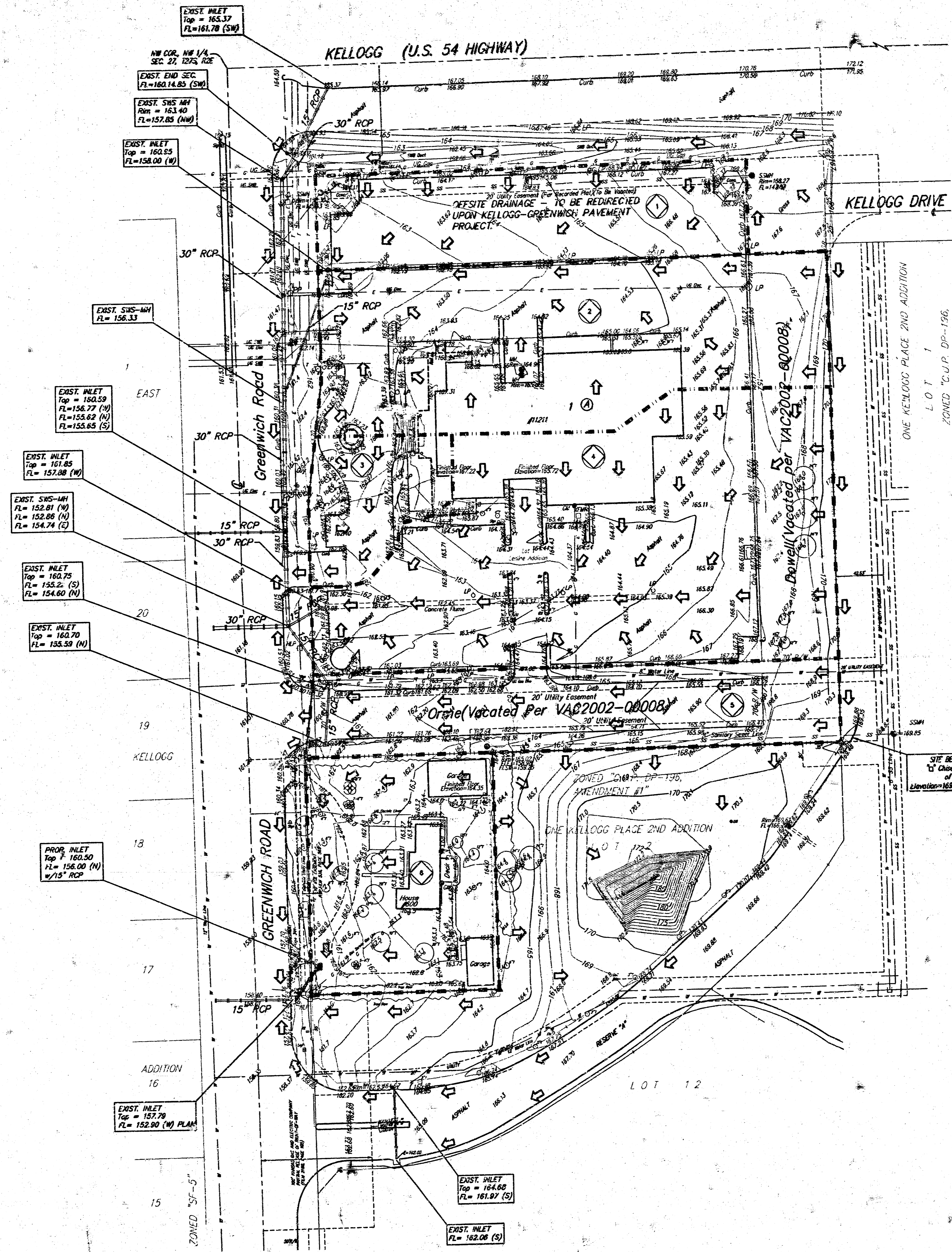


DRAINAGE PLAN STEVENS 3RD ADDITION WICHITA, SEDGWICK COUNTY, KANSAS



Basin Lot	Area acres	Tc min.	Runoff Coefficient		Peak Flowrate	
			5-yr	100-yr	5-yr cfs	100-yr cfs
1	0.71	15	0.85	0.91	2.8	4.8
2	1.38	15	0.85	0.91	5.3	9.3
3	0.30	15	0.85	0.91	1.2	2.0
4	1.99	15	0.85	0.91	7.7	13
5	0.77	15	0.85	0.91	3.0	5.2
6	0.77	15	0.85	0.91	3.0	5.2

- DATE OF PREPARATION: MAY 24, 2002
DATE OF UPDATING: MAY 8, 2002
CONTRACT NUMBER: 1-190
- 3/4" IRON PIPE (ROUND)
 - #1 REBAR W/ "BAUGHMAN" CAP (SET)
 - 1/2" REBAR W/ "BAUGHMAN" CAP (SET)
 - PI - PAVEMENT
 - CB = Catch Basin
 - EB = Electric Box
 - EM = Electric Meter
 - FH = Fire Hydrant
 - FWM = Fiberglass Line Manhole
 - FP = Flag Pole
 - GM = Gas Meter
 - GP = Guard Post (Ballard)
 - GA = Guy Anchor
 - HLP = High Line Pole
 - ICV = Irrigation Control Valve - Valve Box
 - LP = Light Pole
 - MB = Mail Box
 - DM = Delineation Marker
 - PP = Power Pole
 - SP = Signal Pole
 - Sign = Sign
 - SSMH = Sanitary Sewer Manhole
 - SSWM = Southwestern Bell Manhole
 - SSWMBM = Southwestern Bell Manhole
 - SSWMP = Southwestern Bell Manhole
 - SSWMH = Stormwater Sewer Manhole
 - IB = Traffic Box
 - TMH = Traffic Manhole
 - TP = Telephone Pole
 - MM = Meter Meter
 - RV = Water Valve
 - TRM = Transducer

BENCHMARK:
CITY OF WICHITA BENCHMARK - SE CORNER OF INTERSECTION OF GREENWICH AND KELLOGG, NW CORNER OF LIGHT POLE BASE
48.60' N.W. OF E. OF SS MANHOLE
49.70' S. OF E. OF TRAFFIC SIGNAL MANHOLE
70.50' E. OF BACK OF E. CURB ON E. SIDE OF ALLEY IN GREENWICH ROAD
ELEV. = 164.78 CITY DATUM (1988 BENCH)

