

**DRAINAGE PLAN  
SKETCH PLAT  
E. M. STEVEN'S  
THIRD ADDITION**

Lots 1, 2, 4 and the south 50 feet of Lot 3, Keys Addition to Wichita, Kansas and Lot 2, except the west 37 feet thereof, Keys Second Addition to Wichita, Kansas and Lot 1, E. M. Steven's Second Addition, Wichita Sedgewick County, Kansas.

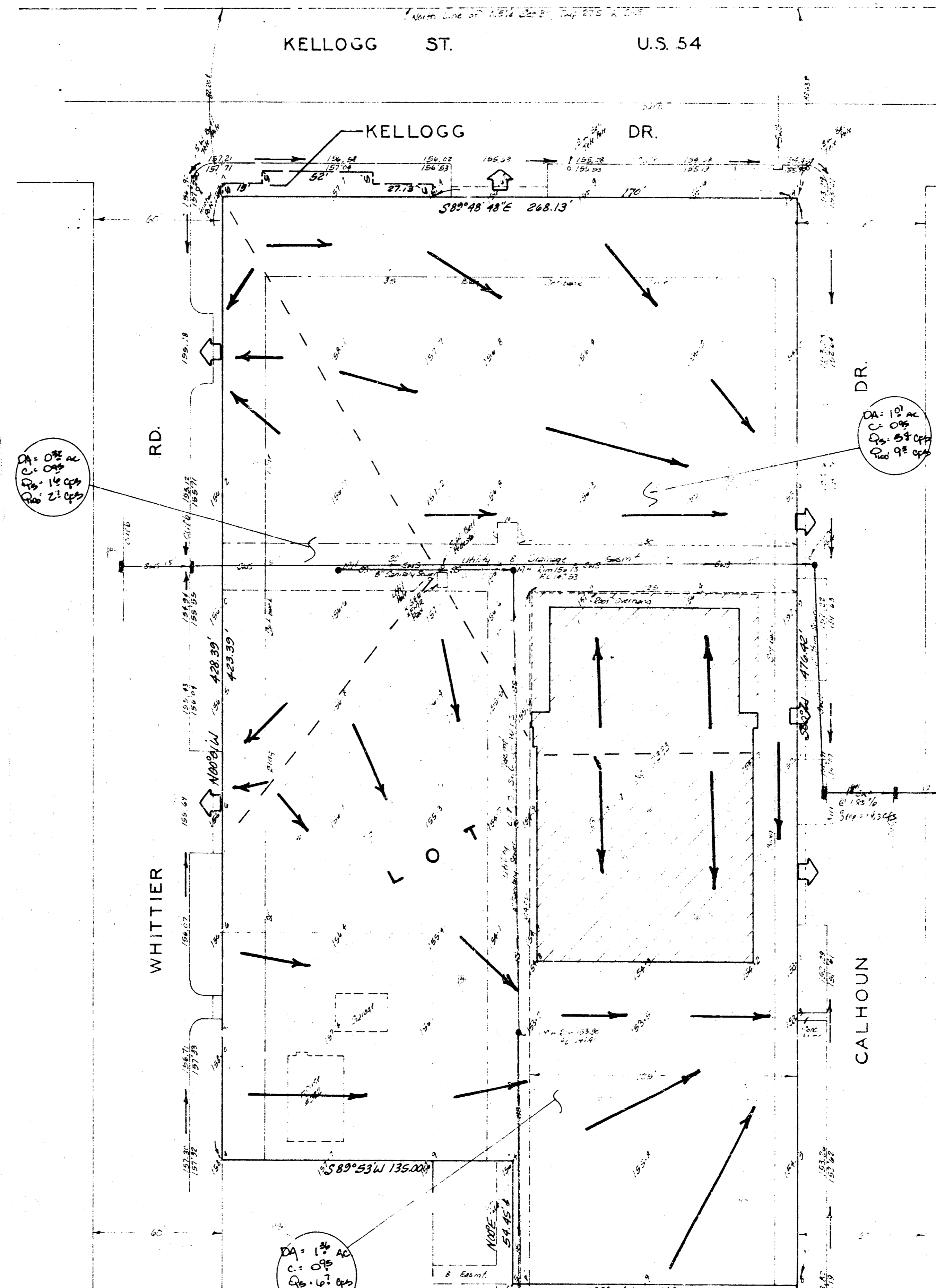
Edward M. Steven  
Pauline C. Steven

N  
1" = 30'  
Elev. = City Datum

BENCH MARK:  
10" square cut @ N.W. Cor. of  
2x5 C.B. @ S. end of curb return  
@ S.W. Cor. of Kellogg Dr. and  
Governour Rd. Elev. 162.44

NOTE: The proposed site will remain essentially as it is today and will continue to drain to the streets, thru ditches and plunges. Existing storm sewers in the street drainage basins from the site, proposed plunges and site plunges, are to continue to be used for all other runoff amounts are indicated here on this plan. 11/27/84

BAUGHMAN COMPANY, P.A.  
SURVEYING & ENGINEERING  
318 267-7271 • 320 LAURA • WICHITA, KANSAS 67211  
20 NOV 84



**DRAINAGE PLAN  
SKETCH PLAT  
E. M. STEVEN'S  
THIRD ADDITION**

Lots 1, 2, 4 and the south 50 feet of Lot 3, Keys Addition to Wichita, Kansas and Lot 2, except the west 37 feet thereof, Keys Second Addition to Wichita, Kansas and Lot 1, E. M. Steven's Second Addition, Wichita Sedgewick County, Kansas.

Edward M. Steven  
Pauline C. Steven

N  
1" = 30'  
Elev. = City Datum

BENCH MARK:  
10" square cut @ N.W. Cor. of  
2x5 C.B. @ S. end of curb return  
@ S.W. Cor. of Kellogg Dr. and  
Governour Rd. Elev. 162.44

NOTE: The proposed site will remain essentially as it is today and will continue to drain to the streets, thru ditches and plunges. Existing storm sewers in the street drainage basins from the site, proposed plunges and site plunges, are to continue to be used for all other runoff amounts are indicated here on this plan. 11/27/84

BAUGHMAN COMPANY, P.A.  
SURVEYING & ENGINEERING  
318 267-7271 • 320 LAURA • WICHITA, KANSAS 67211