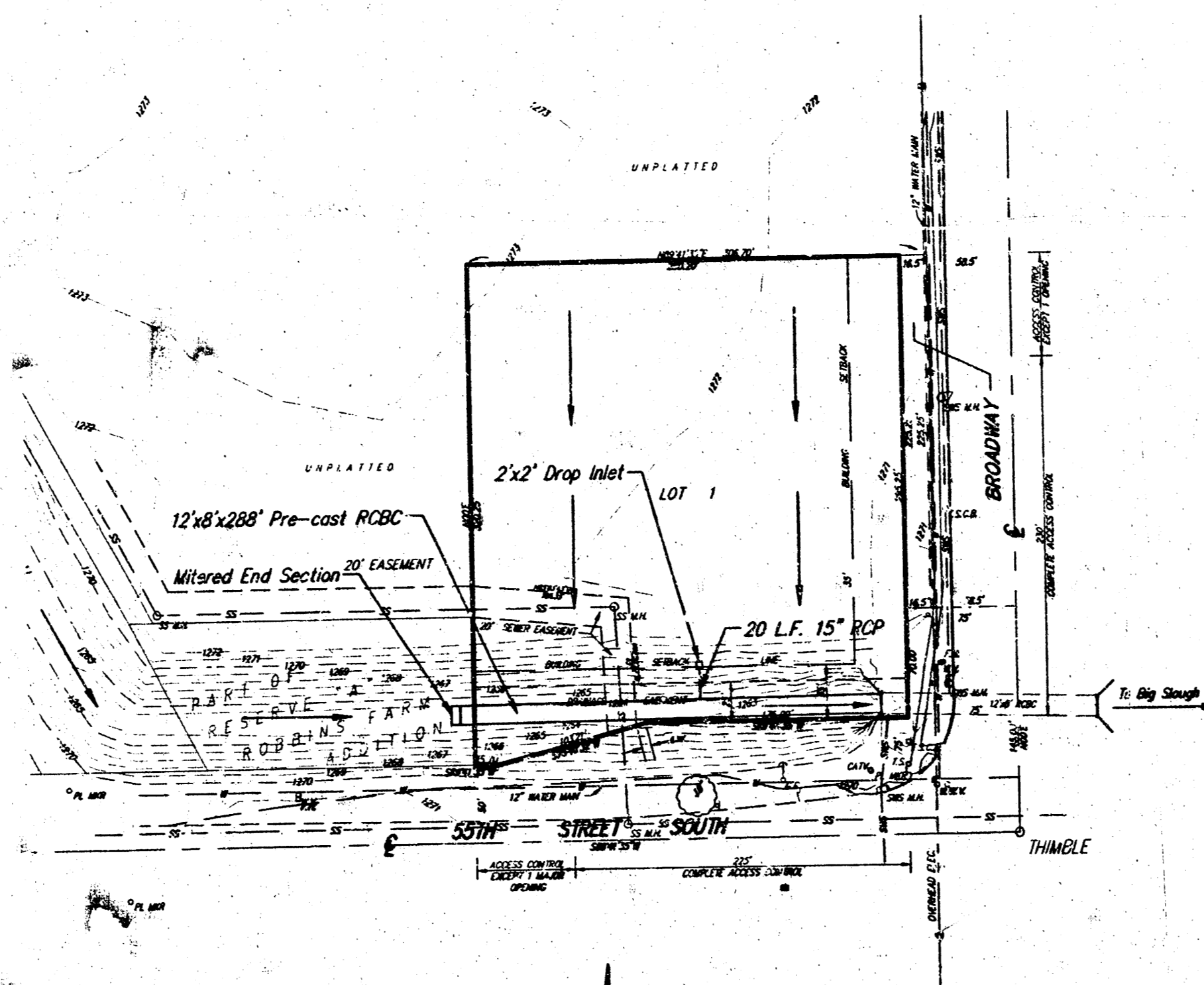


DRAINAGE PLAN STONEBOROUGH 3RD ADDITION WICHITA, SEDGWICK COUNTY, KANSAS



LEGAL DESCRIPTION

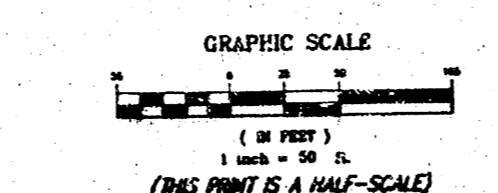
That part of Reserve A, Robbins Farm Addition, Wichita, Kansas, Sedgewick County, Kansas described as beginning at the S.E. Corner thereof, thence S89°47'25\"/>

OWNER:
Stoneborough Corp.
229 E. Hillside
Wichita, KS 67202

GROSS SITE:
9,026.52 Sq. Ft.
2.080 Acres

NET SITE:
8,260.25 Sq. Ft.
1.900 Acres

| EXISTING | PROPOSED |
|-------------------------|-------------------------|
| Drainage Area = 2.0 AC | Drainage Area = 2.0 AC |
| Hydraulic Soil Type "D" | Hydraulic Soil Type "D" |
| $T_c = 15$ min. | $T_c = 15$ min. |
| $C_s = 0.85$ | $C_s = 0.85$ |
| $C_{in} = 0.85$ | $C_{in} = 0.97$ |
| $I_p = 4.26$ in. | $I_p = 4.56$ in. |
| $I_m = 7.14$ in. | $I_m = 7.32$ in. |
| $Q_p = 1.2$ cfs | $Q_p = 7.8$ cfs |
| $C_{in} = 8.6$ cfs | $C_{in} = 11.4$ cfs |



MEAN PAD ELEVATION FOR LOWEST OPENING = 1271 (M.S.L.)

BENCH MARK: CITY OF WICHITA STD. DISC.
TOP OF MERIDIAN, N.E. CORNER OF R.C.B.C.
@ N.W. CORNER OF INTERSECTION
SOUTH ST. SOUTH & BRADSHAW
ELEV = 1274.97 (M.S.L.)

NOTE:
Use parking lot elevation on this site to reduce the 100 year peak discharge to 3.6 cfs from 7.8 cfs.
Approximate storm frequency is 2.655 on 10.
Flooding depth not to exceed 0.60 ft.

DRG FILE: Drainage Plan.dwg
PROJECT NO.: 221854P
REV. 06.2000

SRB
SAVOY, EUGLES & BORN, P.A.
ENGINEERING & SURVEYING