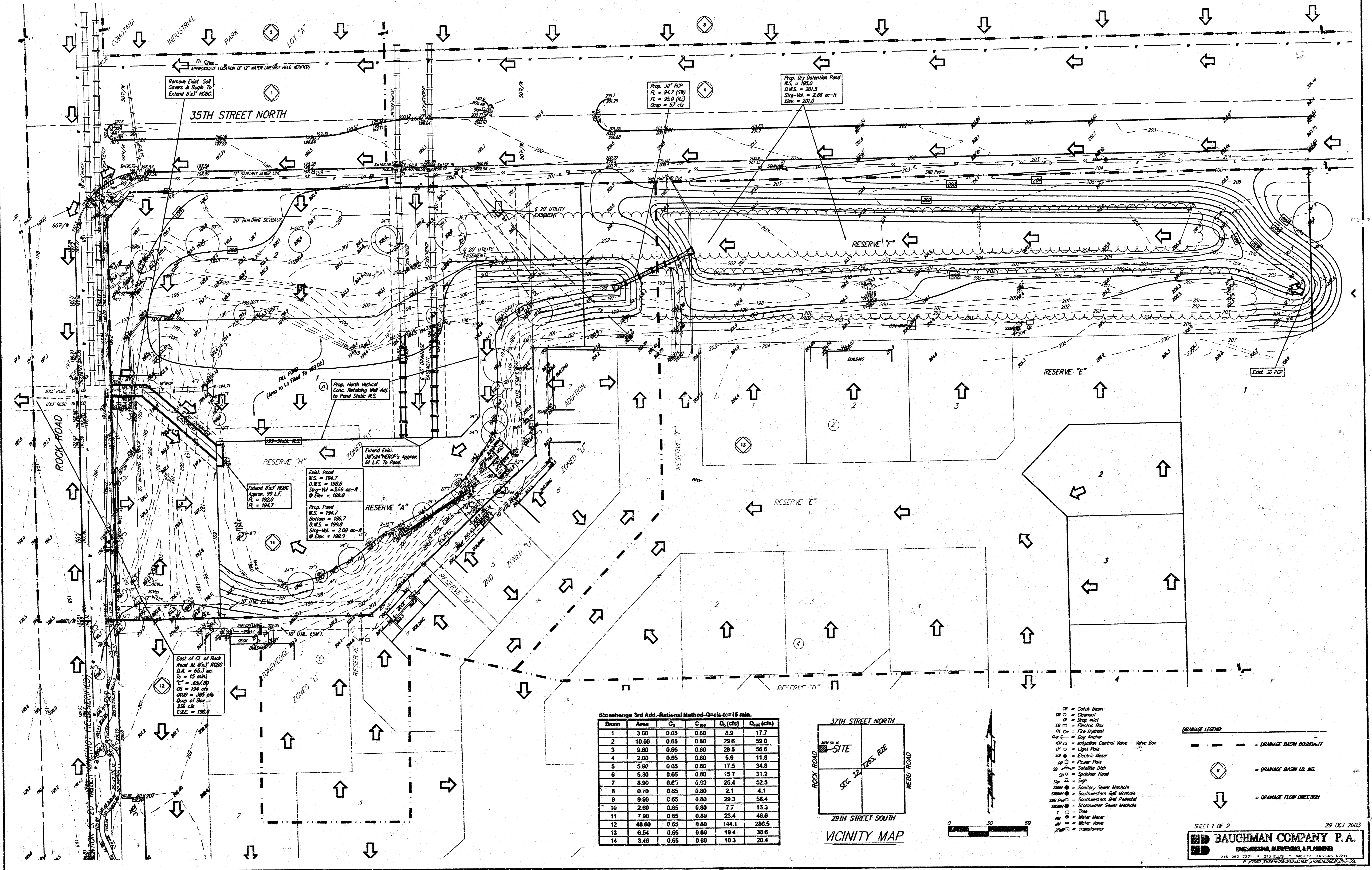


DRAINAGE PLAN

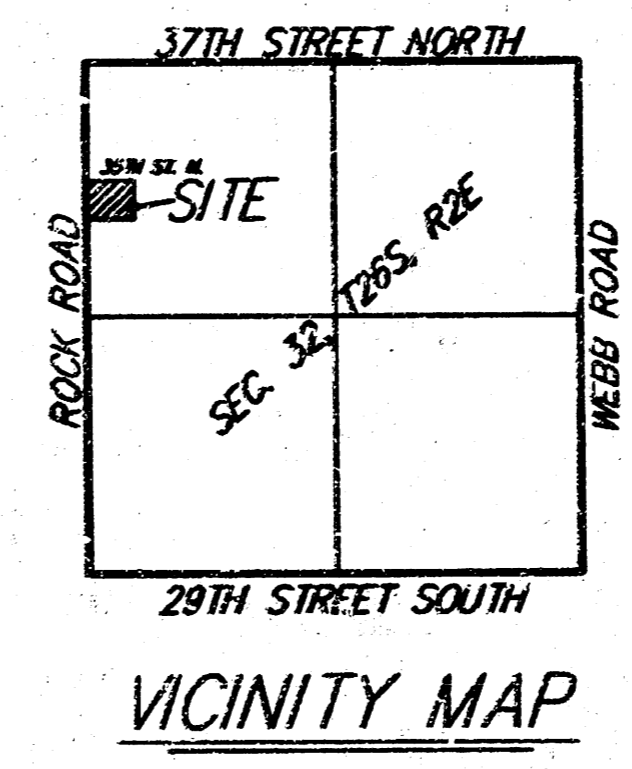
STONEHEDGE 3RD ADDITION

WICHITA, SEDGWICK COUNTY, KANSAS



Stonehedge 3rd Add.-Rational Method- $C_p=15$ min.

Basin	Area	C_p	C_{ra}	Q_p (cfs)	Q_{15} (cfs)
1	3.00	0.65	0.80	8.9	17.7
2	10.00	0.65	0.80	29.6	59.0
3	9.60	0.65	0.80	28.5	56.6
4	2.00	0.65	0.80	5.9	11.8
5	5.90	0.65	0.80	17.5	34.8
6	5.30	0.65	0.80	15.7	31.2
7	8.90	0.65	0.80	25.4	52.5
8	0.70	0.65	0.80	2.1	4.1
9	9.90	0.65	0.80	29.3	58.4
10	2.90	0.65	0.80	7.7	15.3
11	7.90	0.65	0.80	23.4	46.6
12	48.60	0.65	0.80	144.1	288.5
13	6.54	0.65	0.80	19.4	38.6
14	3.46	0.65	0.80	10.3	20.4



- CB = Catch Basin
- CS = Catchment
- DB = Drop Inlet
- EB = Electric Box
- EH = Fire Hydrant
- GA = Guy Anchor
- ICV = Irrigation Control Valve - Valve Box
- LI = Light Pole
- EM = Electric Meter
- PP = Power Pole
- SD = Soluble Dish
- SH = Sprinkler Head
- SP = Sign
- SSM = Sanitary Sewer Manhole
- SSM-S = Sanitary Sewer Manhole
- SSM-P = Sanitary Sewer Manhole
- SSM-PS = Sanitary Sewer Manhole
- SSM-PS = Stormwater Sewer Manhole
- T = Tree
- WV = Water Valve
- WV = Water Valve
- TRFD = Transformer

