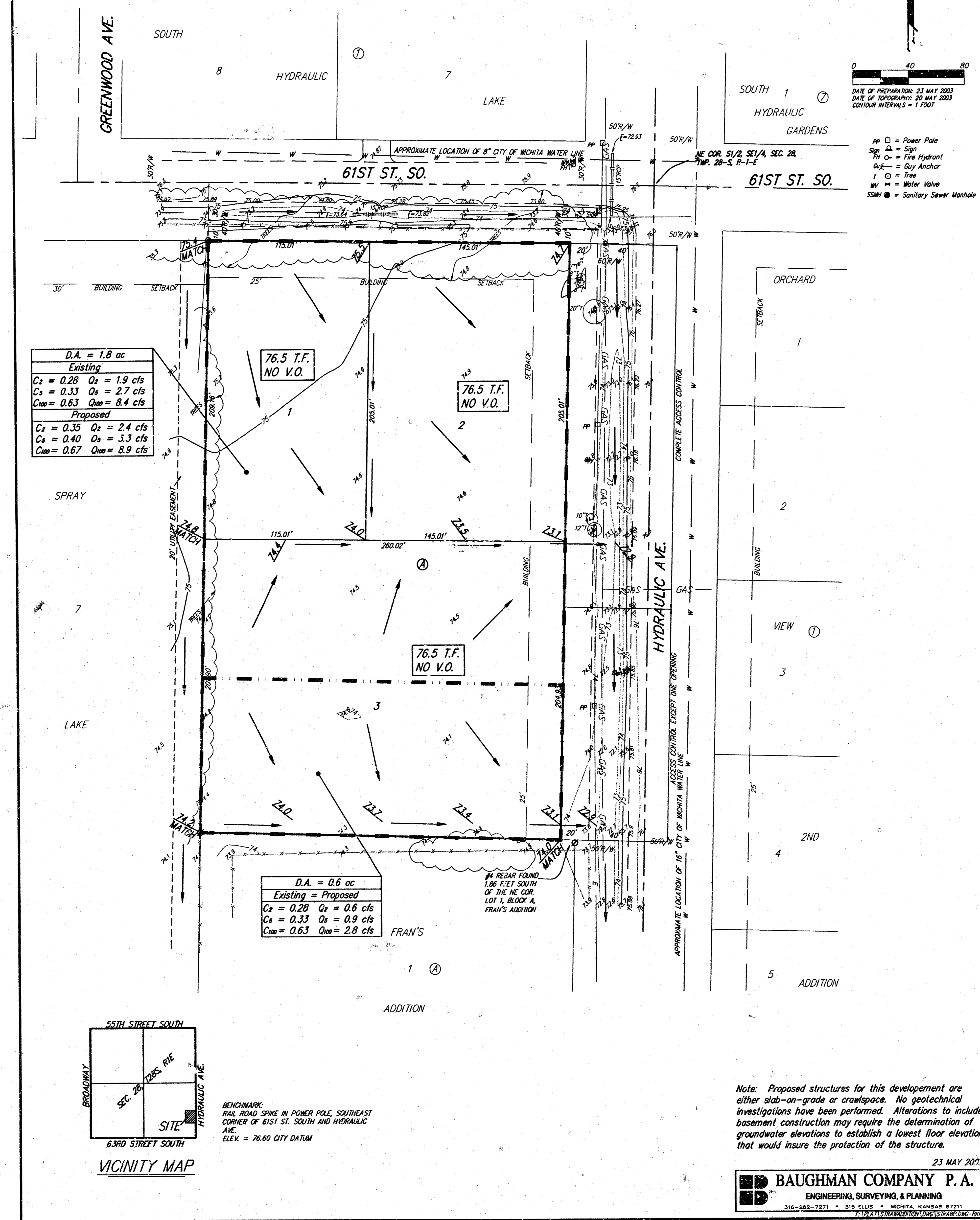
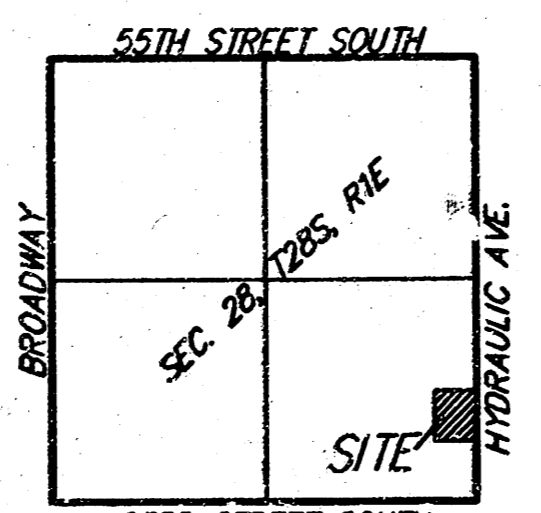


DRAINAGE PLAN STRAW ADDITION WICHITA, SEDGWICK COUNTY, KANSAS



D.A. = 1.8 ac	
Existing	
Cs = 0.28	Qs = 1.9 cfs
Cs = 0.33	Qs = 2.7 cfs
C _{max} = 0.63	Q _{max} = 8.4 cfs
Proposed	
Cs = 0.35	Qs = 2.4 cfs
Cs = 0.40	Qs = 3.3 cfs
C _{max} = 0.67	Q _{max} = 8.9 cfs

D.A. = 0.6 ac	
Existing = Proposed	
Cs = 0.28	Qs = 0.6 cfs
Cs = 0.33	Qs = 0.9 cfs
C _{max} = 0.63	Q _{max} = 2.8 cfs



BENCHMARK:
 RAIL ROAD SPIKE IN POWER POLE, SOUTHEAST
 CORNER OF 61ST ST. SOUTH AND HYDRAULIC
 AVE.
 ELEV. = 76.60 CITY DATUM

Note: Proposed structures for this development are either slab-on-grade or crawspace. No geotechnical investigations have been performed. Alterations to include basement construction may require the determination of groundwater elevations to establish a lowest floor elevation that would insure the protection of the structure.