

DRAINAGE PLAN FOR SUBWAY ADDITION TO SEDGWICK COUNTY, KANSAS

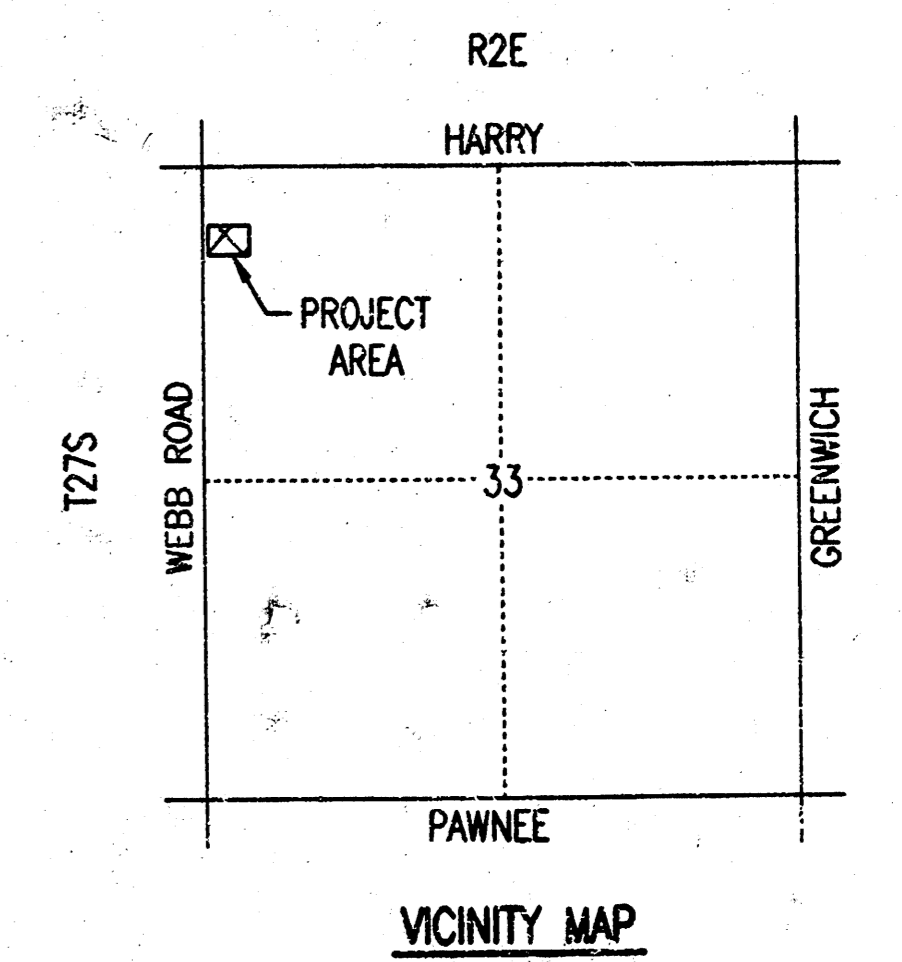
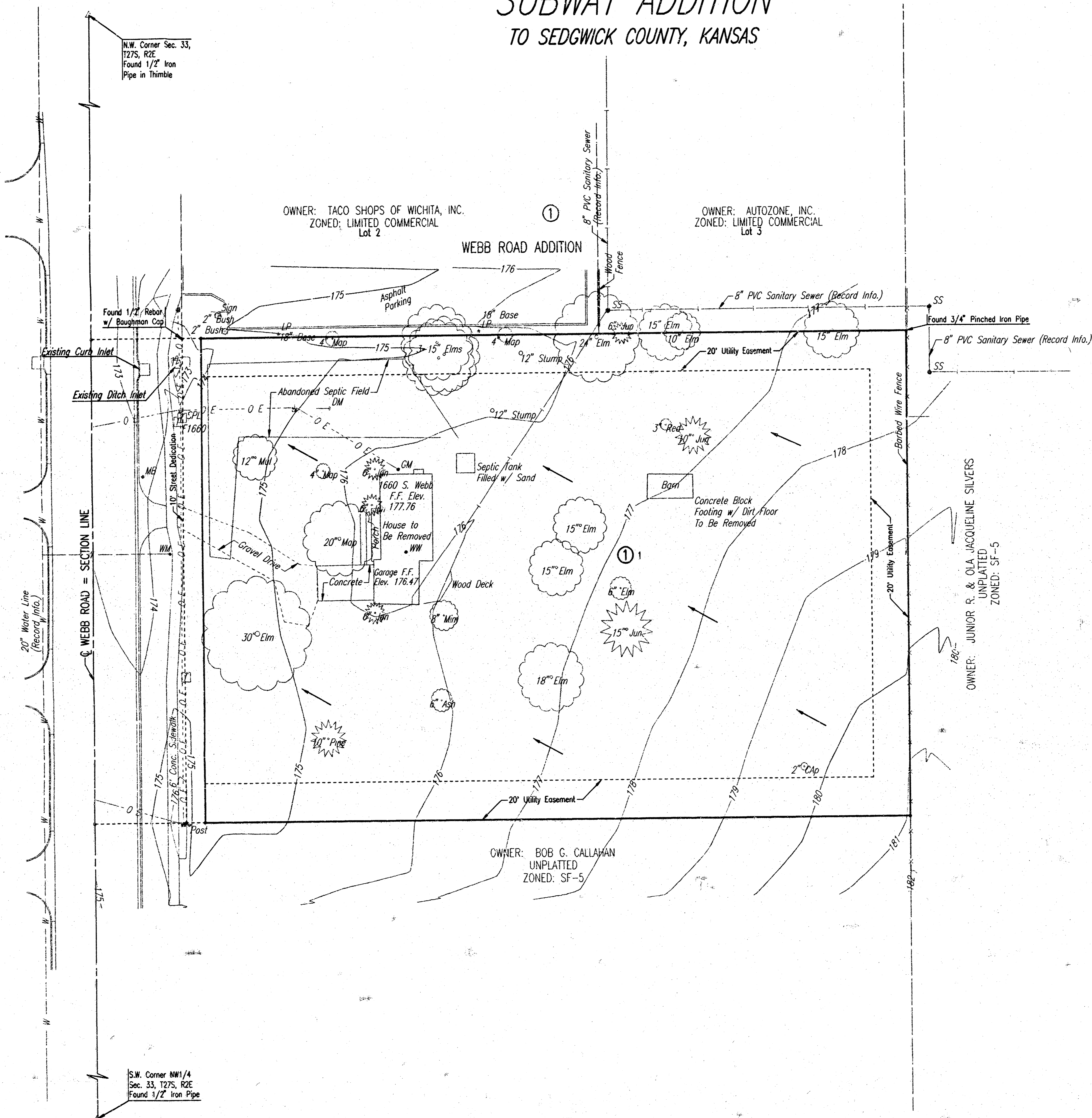


SCALE: 1" = 30'

- = 3/4" IRON PIPE W/PEC CAP UNLESS OTHERWISE NOTED
- BM #1: RAILROAD SPIKE IN WEST FACE OF 6TH POWER POLE SOUTH OF HARRY ON EAST SIDE OF WEBB ROAD. ELEV. 176.86
- BM #2: CITY OF WICHITA BRASS DISK AT THE S.E. CORNER OF TRAFFIC SIGNAL BASE AT THE N.W. CORNER OF THE INTERSECTION OF HARRY AND WEBB ROAD. ELEV. 171.64

LEGEND
 STORM WATER FLOW

THE SITE SHALL BE GRADED TO DRAIN TOWARDS THE EXISTING DITCH INLET NEAR THE NORTHWEST CORNER OF THE PLAT VIA APPROVED DRAINAGE CONVEYANCE METHODS.
 SEE SUPPORTING CALCULATIONS FOR HYDROLOGY SUMMARY.



PSNR, SPL, OPR, SPL, SCALE, 1"=30.00
 C:\2002\102024\Subway Plat.dwg DRAINAGE 11-18-2002 08:16:50 am