

TALLGRASS COMMERCIAL 4TH ADDN
(Drainage)

DRAINAGE PLAN

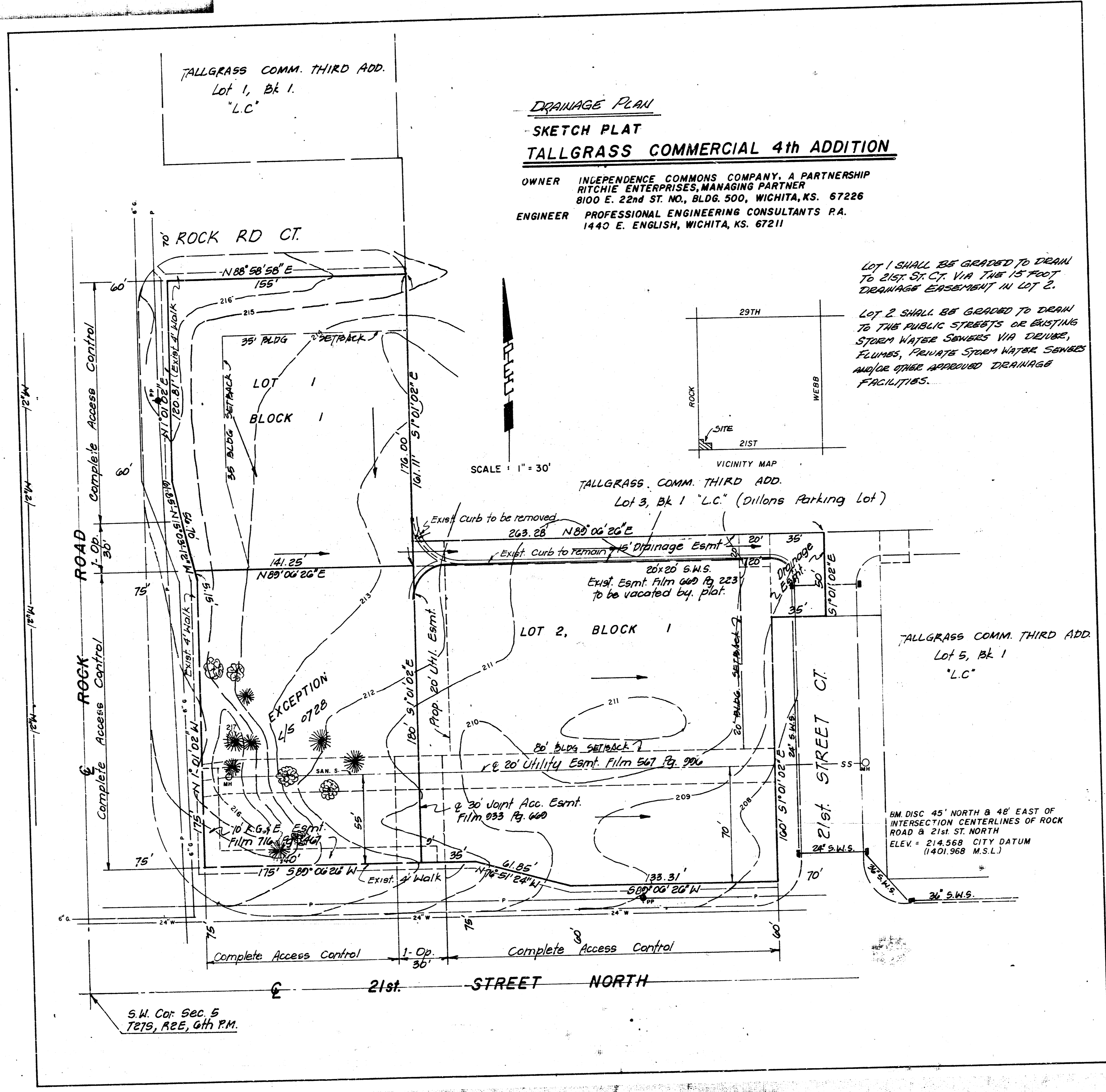
SKETCH PLAT

TALLGRASS COMMERCIAL 4th ADDITION

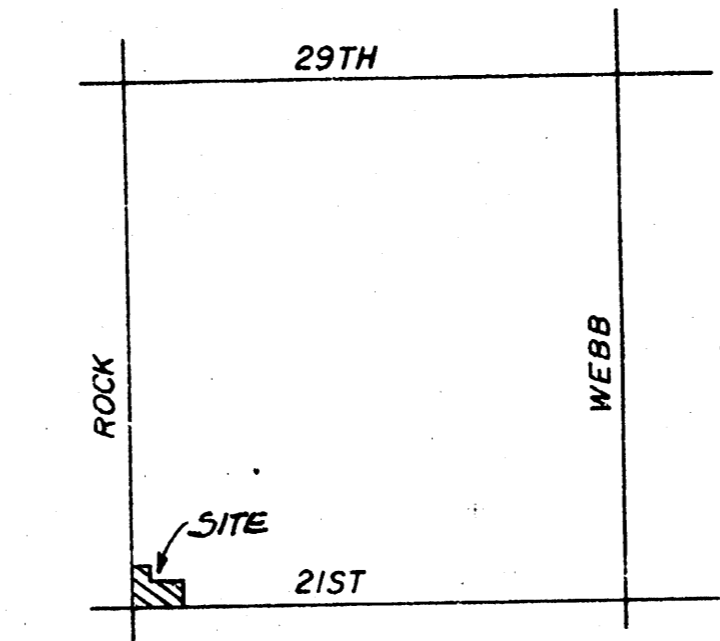
OWNER INDEPENDENCE COMMONS COMPANY, A PARTNERSHIP
RITCHIE ENTERPRISES, MANAGING PARTNER
8100 E. 22nd ST. NO., BLDG. 500, WICHITA, KS. 67226
ENGINEER PROFESSIONAL ENGINEERING CONSULTANTS P.A.
1440 E. ENGLISH, WICHITA, KS. 67211

LOT 1 SHALL BE GRADED TO DRAIN
TO 21st St. Ct. VIA THE 15' FOOT
DRAINAGE EASEMENT IN LOT 2.

LOT 2 SHALL BE GRADED TO DRAIN
TO THE PUBLIC STREETS OR EXISTING
STORM WATER SEWERS VIA DRAINAGE,
FLUMES, PRIVATE STORM WATER SEWERS
AND/OR OTHER APPROVED DRAINAGE
FACILITIES.



SCALE: 1" = 30'



BM DISC 45' NORTH & 48' EAST OF
INTERSECTION CENTERLINES OF ROCK
ROAD & 21st ST. NORTH
ELEV. = 214.568 CITY DATUM
(1401.968 M.S.L.)

S.W. Cor. Sec. 5
T27S, R2E, 4th P.M.