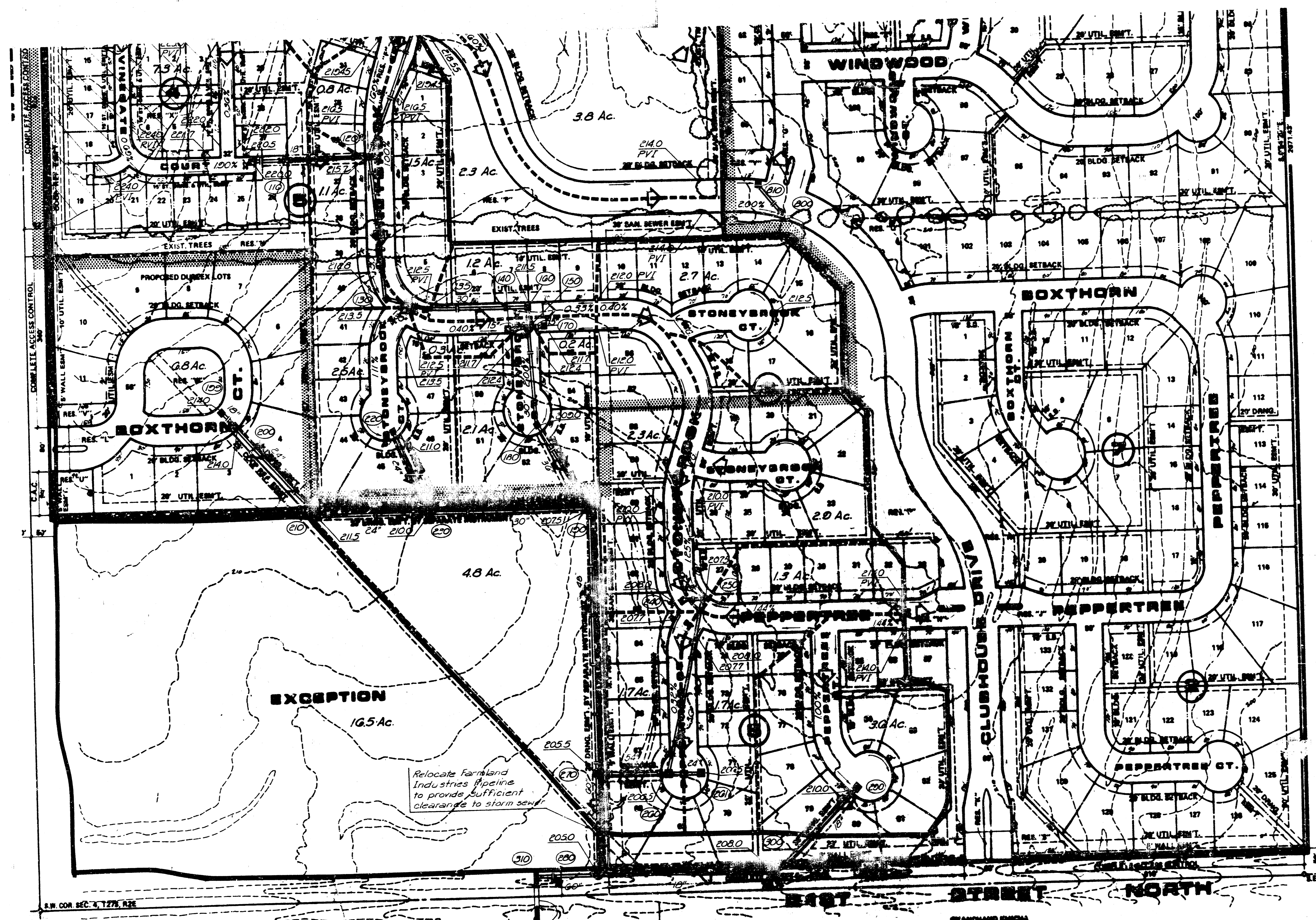


TALLGRASS EAST SECOND ADDITION
(Drainage)

211 - 1/4 Sec 10, T27N, R2E, K3E, Plate No. 1 of
NE Cor. SW 1/4 Sec 4, T27N, R2E Elev. 607.88



HARRY S. BROWN JR. & DIANA KITCH
ZONED R-1

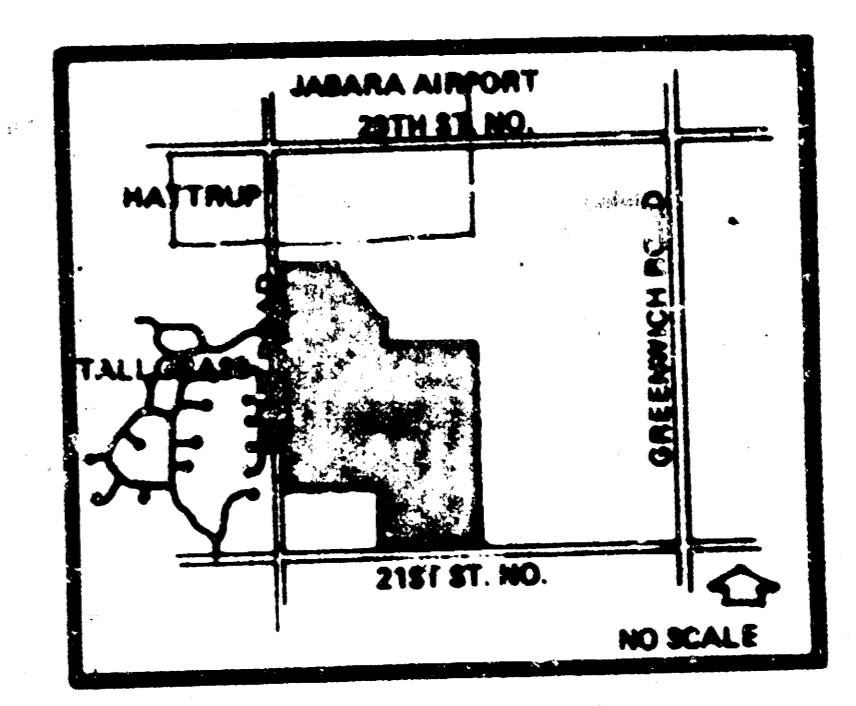
NOTES:

RESERVES "A" THROUGH "L" ARE FOR DRAINAGE, ENTRY MONUMENTS, LANDSCAPING AND IRRIGATION AND UTILITIES CONFINED WITHIN EASEMENTS.
RESERVES "M" THROUGH "V" AND "W" ARE FOR DRAINAGE, ENTRY MONUMENTS, LANDSCAPING, SIDEWALKS, IRRIGATION AND UTILITIES WHEN CONFINED WITHIN EASEMENTS. RESERVE "V" TO ALSO PERMIT CONSTRUCTION OF GAZEBOS.
RESERVES "X", "Y", "Z" AND "AA" ARE FOR DRAINAGE, LANDSCAPING, SIDEWALKS, IRRIGATION, GAZEBOS AND UTILITIES CONFINED WITHIN EASEMENTS. RESERVES "Z" AND "AA" SHALL ALSO PERMIT CONSTRUCTION OF LAKES.

Utility symbols on this drainage plan assumed per local standards. Curb & gutter and reinforced concrete pipe (R-0013).

Diagonal hatching denotes Class B Soil. All other areas are Class D Soil.

The following lots shall have minimum walk grade of 0.5' above top of standard curb to confine flow within the right-of-way:
Block G: 8 thru 11, 18, 19, 20 & 27
Block S: 30 thru 74



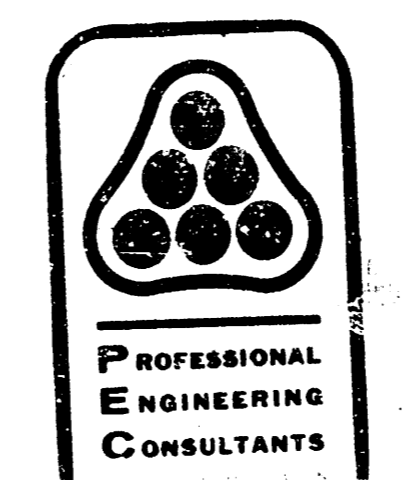
LOCATION MAP

LEGEND

- Plat Boundary
- Drainage Direction (Minor Storm)
- Drainage Direction (Major Storm)
- Drainage Basin Boundary
- Drainage Sub-Basin Boundary
- Proposed Inlet (s)
- Proposed Manhole
- Proposed Valley Gutter
- Proposed Pipe

DRAINAGE PLAN TALLGRASS EAST

Note: Base Map by Bill G. Yung



SCALE: 1" = 100'
Revised 12/3/80
GATS: NOV. 3, 1988

104

OWNER: TALLGRASS CO. 8100 S. ROAD 2000, STONEYBROOK, MISSOURI 64588 WICHITA, KANSAS 67202